

# MEDICAL OFFICE SUITE FOR SUBLEASE

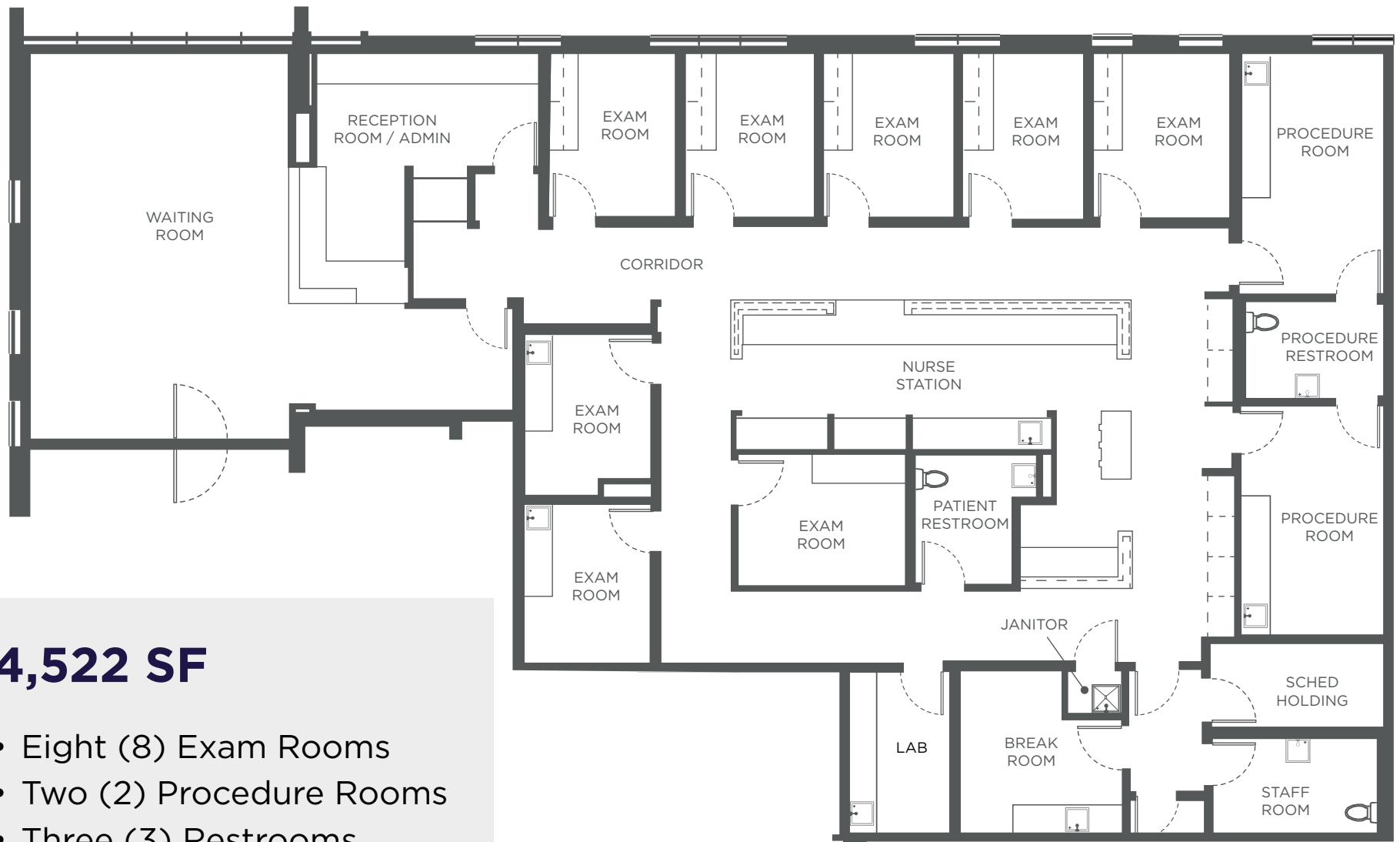
McDowell Medical Plaza

10825 W McDowell Rd | Suite 300

Avondale, AZ 85323



# FLOOR PLAN



**4,522 SF**

- Eight (8) Exam Rooms
- Two (2) Procedure Rooms
- Three (3) Restrooms
- Extensive MA Station
- Lab Room
- Break Room

**VIRTUAL TOUR  
SUITE 300**



# NEARBY MEDICAL MAP







## CONTACT

### **SHEILA BALE**

Managing Director

+1 602 224 4454

[sheila.bale@cushwake.com](mailto:sheila.bale@cushwake.com)

### **ERIKA ECKBLAD**

Senior Associate

+1 602 224 4451

[erika.eckblad@cushwake.com](mailto:erika.eckblad@cushwake.com)

2555 E Camelback Road

Suite 400

Phoenix, AZ 85016

**[cushmanwakefield.com](https://cushmanwakefield.com)**