

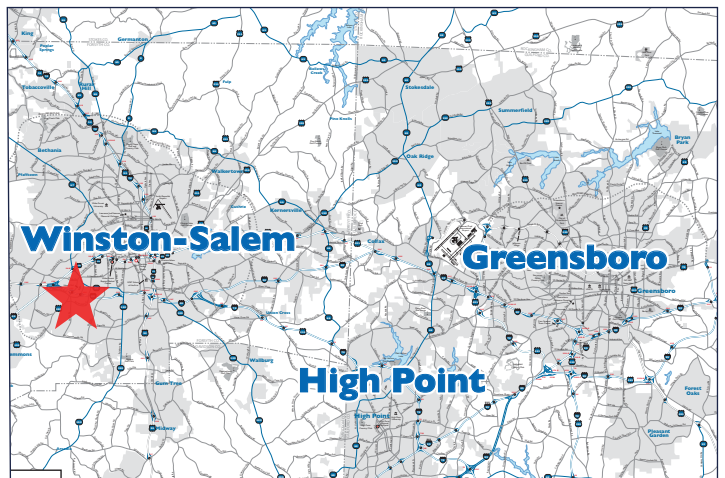
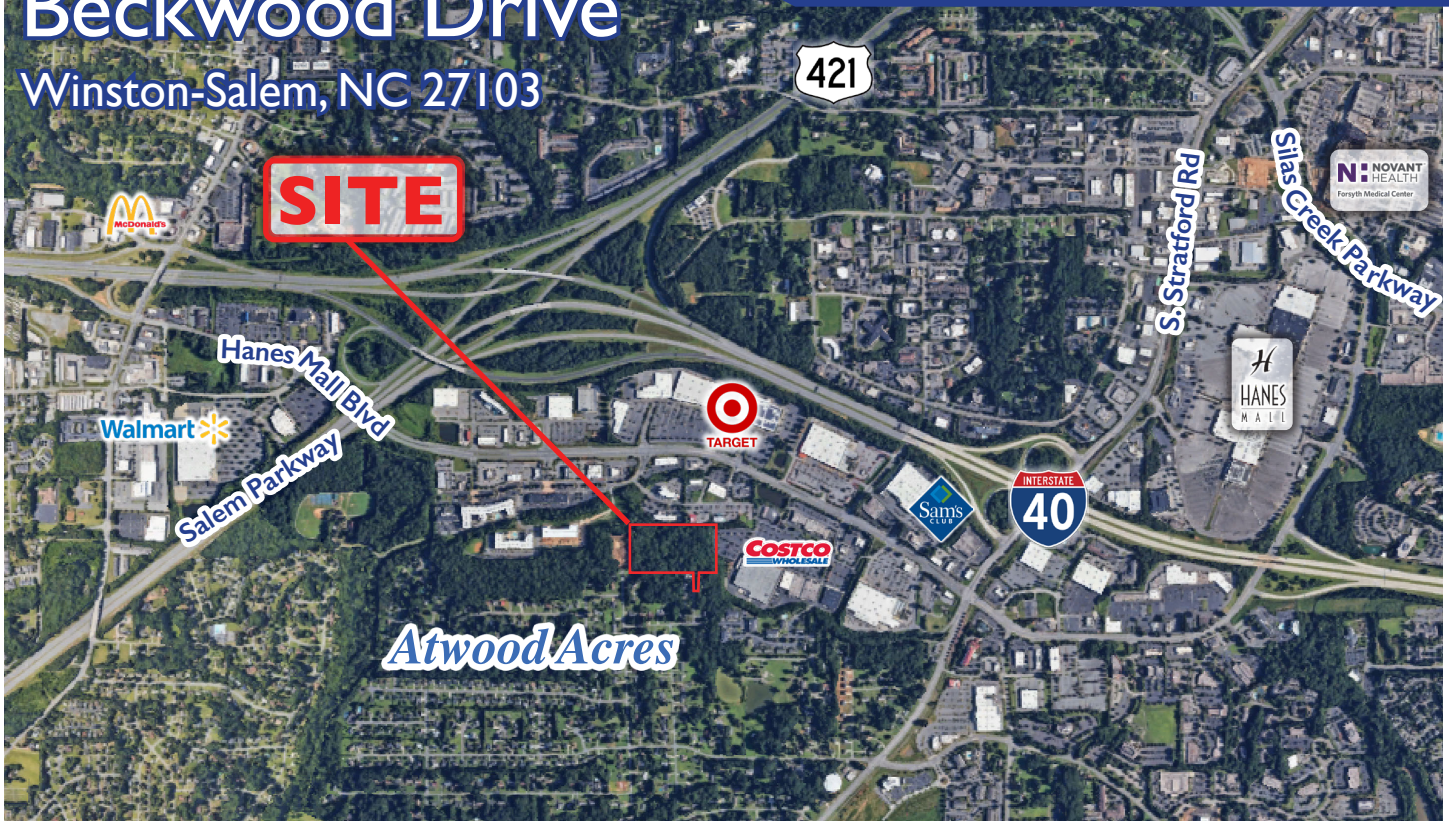
M E R I D I A N

147 S. CHERRY STREET, SUITE 200 | WINSTON-SALEM, NC 27101 | P 336.722.1986 | F 336.723.3173 | MERIDIANREALTY.COM

Beckwood Drive

Winston-Salem, NC 27103

7.88± Acres Residential Development



For more information:

John L. Ruffin, CCIM

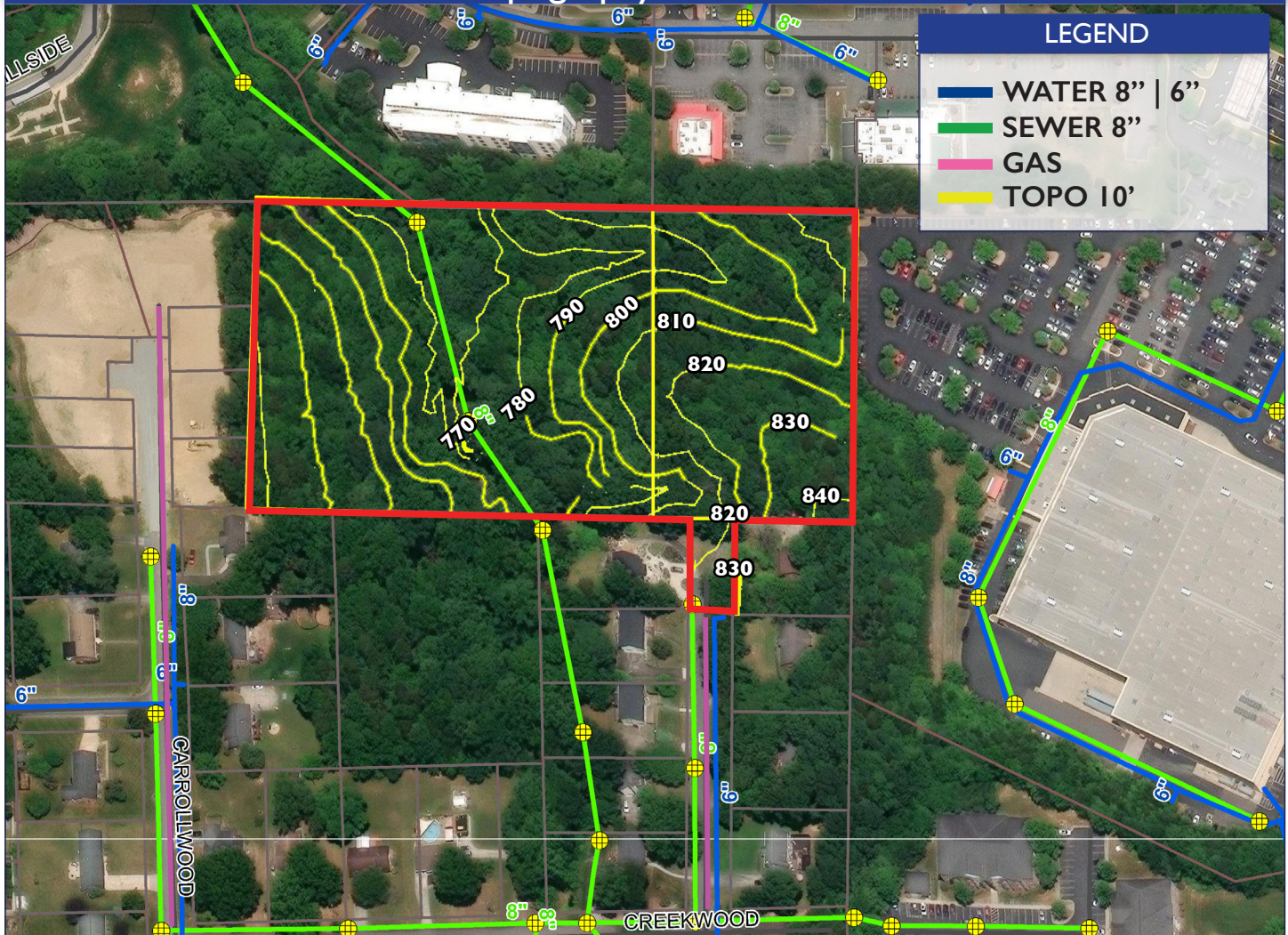
Jruffin@meridianrealty.com

336.480.2081

FOR SALE: \$472,800.00

WWW.MERIDIANREALTY.COM

Topography & Utilities



Demographics 3 Mile Radius

	POPULATION	57,906
	2025-2030 GROWTH RATE: POPULATION	27%
	MEDIAN AGE	47
	HOUSEHOLD	27,227
	MEDIAN HOUSEHOLD INCOME	\$68,730

Property Highlights

- 7.88± Acres
- Utilities to Site
- In high-growth area
- Surrounded by retail & residential
- Convenient to Stratford Rd, Hanes Mall Blvd, Salem Pkwy, & I-40

No warranty or representation (express or implied) is made as to the accuracy or completeness of the information set forth herein. All information is submitted subject to errors, omissions, change of price, prior lease or sale, and withdrawal without notice. All marketing material produced by the Meridian Realty Group is proprietary. Any reproduction is expressly prohibited.



THE MERIDIAN REALTY GROUP | 147 S. CHERRY STREET, SUITE 200 | WINSTON-SALEM, NC 27101

P 336.722.1986 | F 336.723.3173

WWW.MERIDIANREALTY.COM