

# Seattle Arts & Industry Building

Space For Lease

35 S Hanford St. Seattle, WA



## Space Availability Details

### Ground Floor

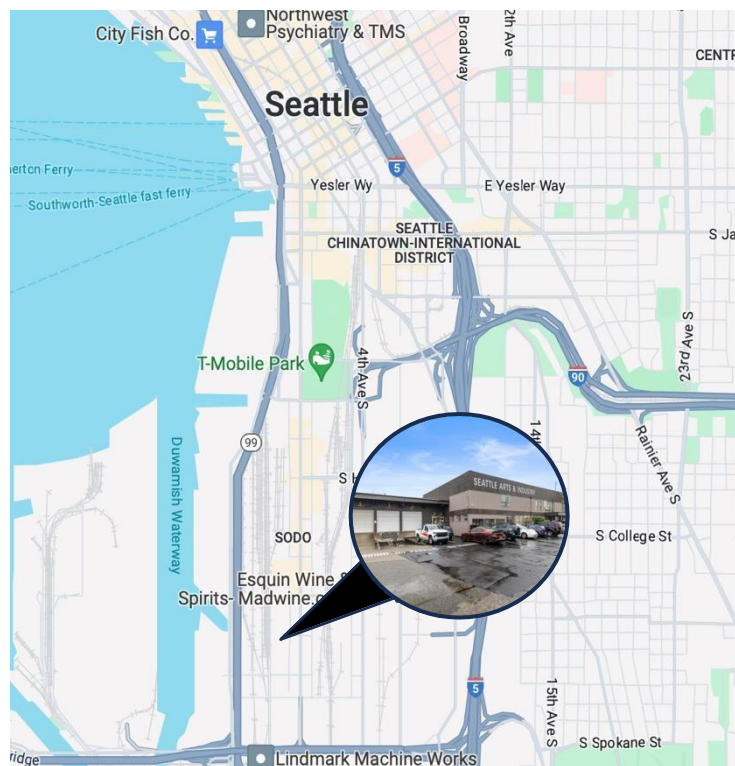
#### • Suite 3C

- Approximately 6,000 SF
- Available Now
- Shared DH and GL loading
- Clear Height: 13'-20'
- \$1.10/SF NNN

### Mezzanine

#### • Suite 10

- 5,448 Rentable SF
- Creative/Art Studio
- Available with 30 days notice



**TYLER SPRINGER**

206.486.3112

tyler@srecommercial.com

**JORDAN SPRINGER**

206.486.3114

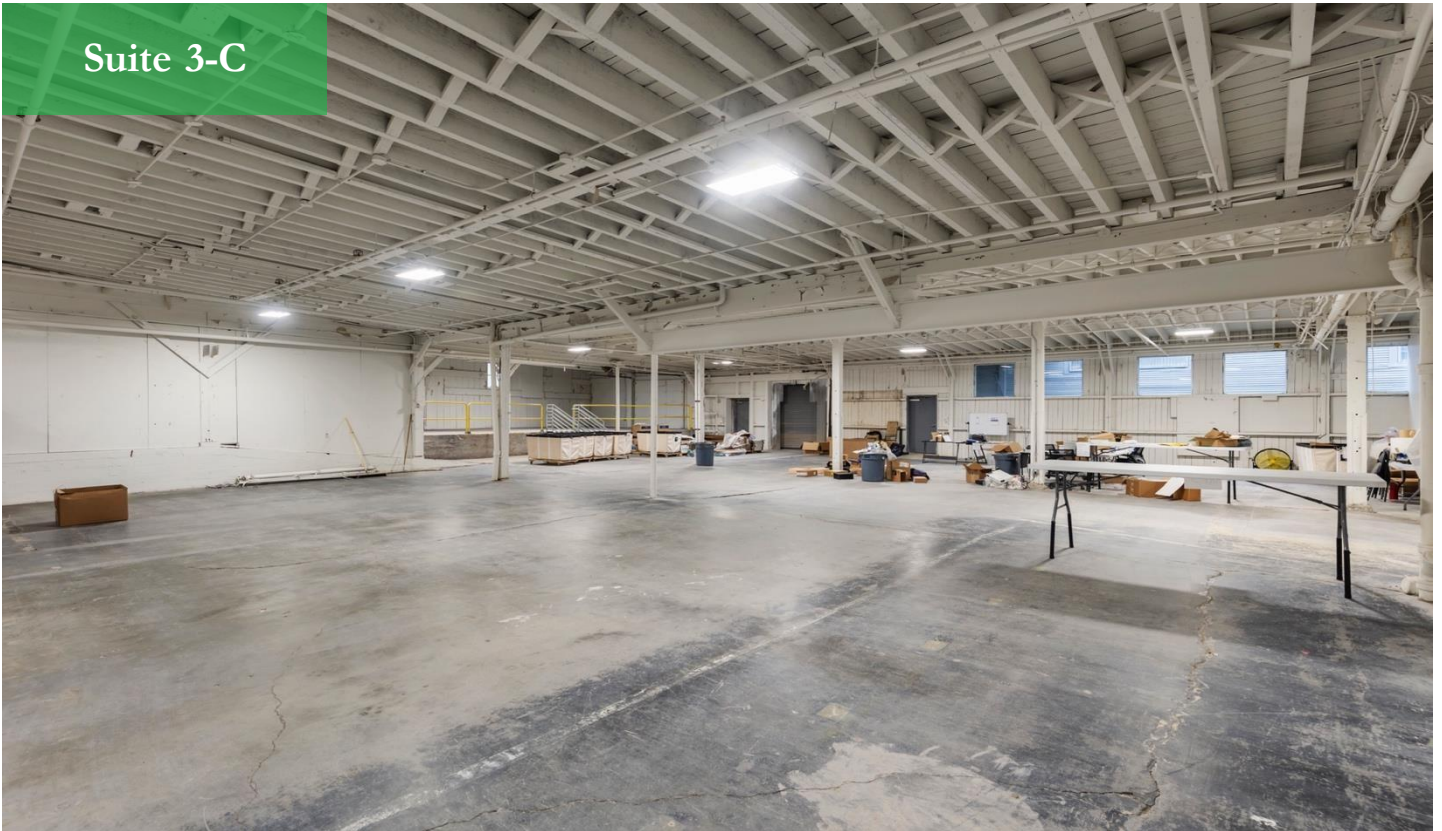
jordan@srecommercial.com

**DEVIN HASKELL**

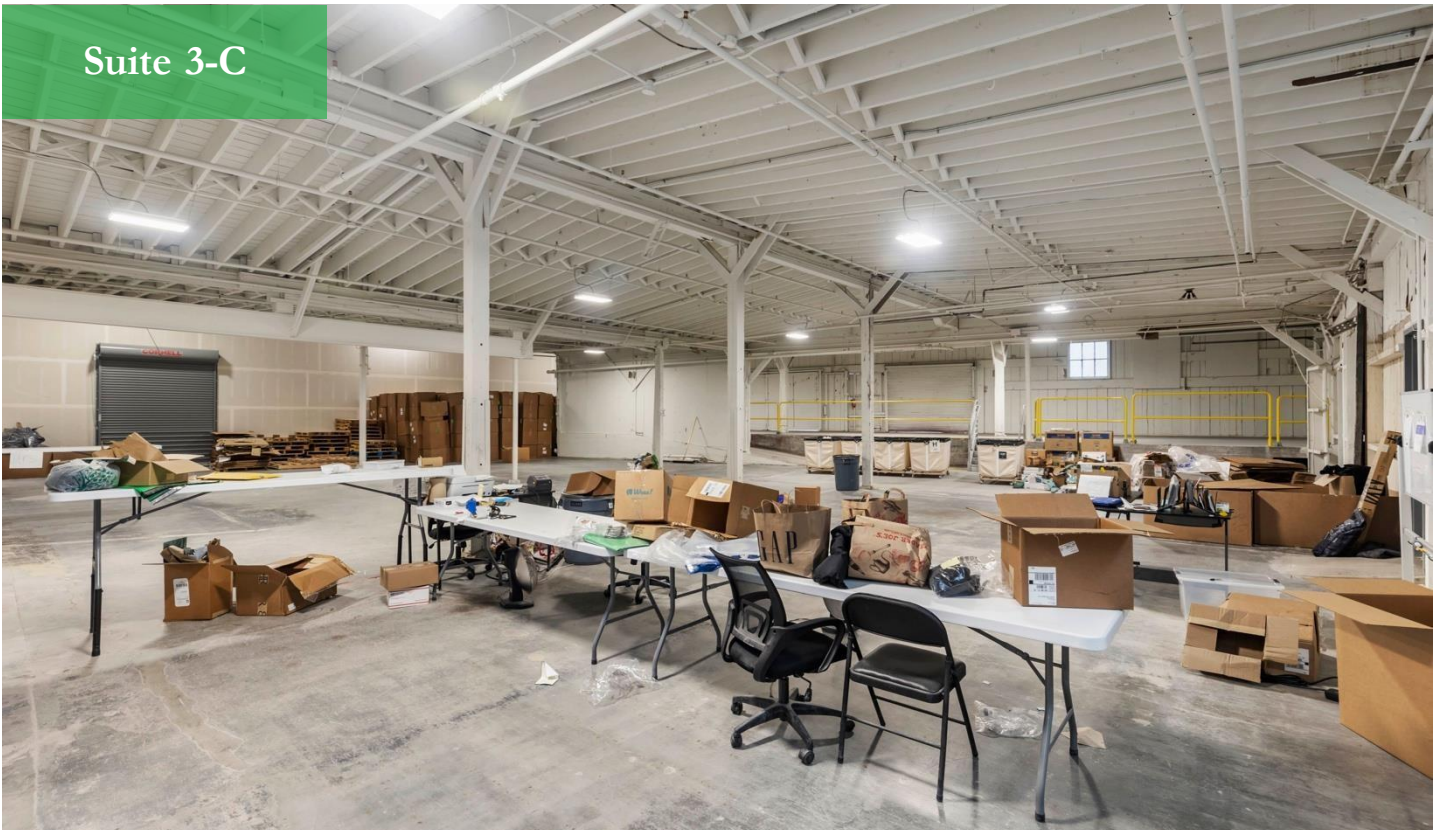
206.486.1428

devin@srecommercial.com

Suite 3-C



Suite 3-C

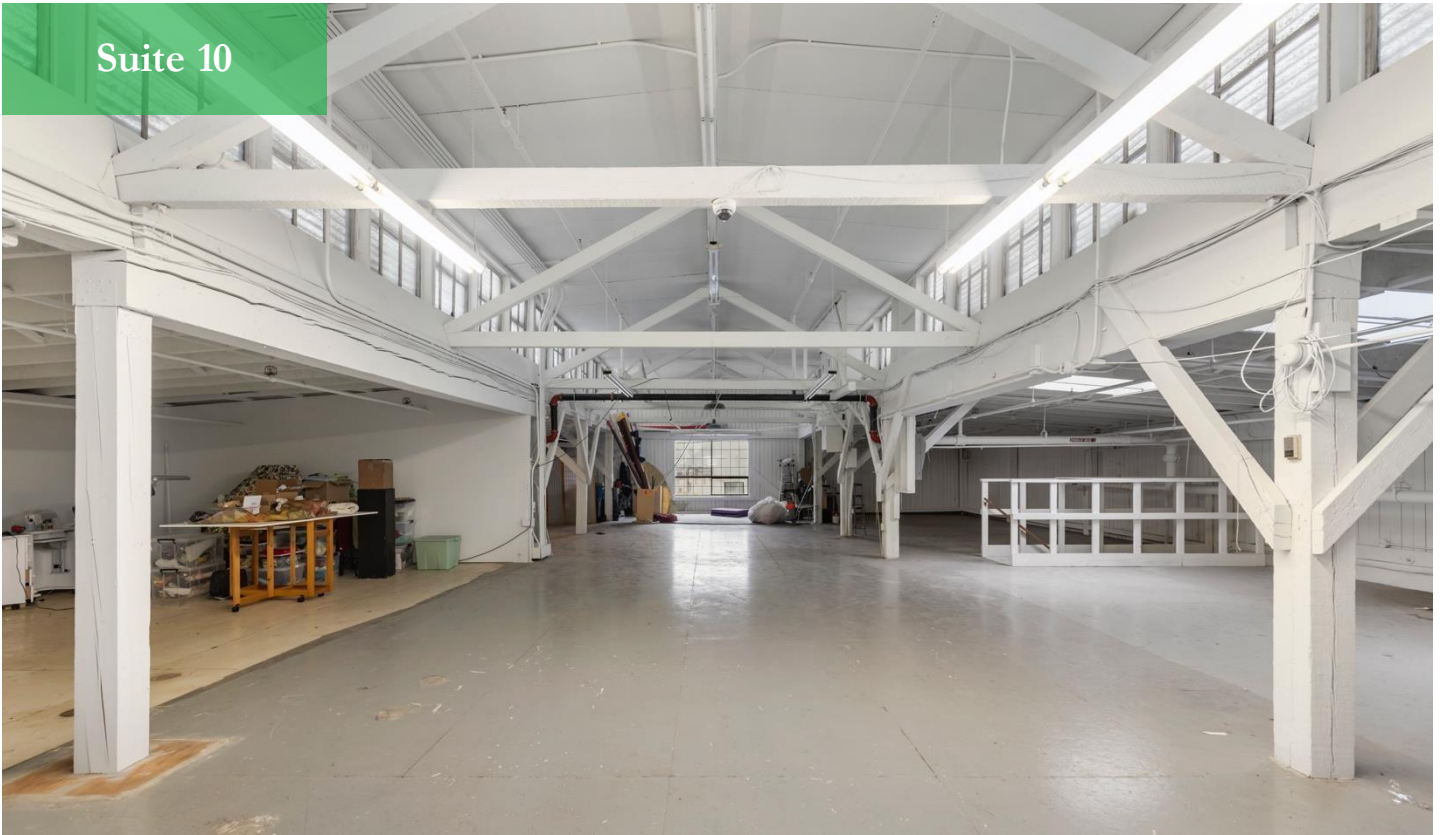


**TYLER SPRINGER**  
206.486.3112  
tyler@srecommercial.com

**JORDAN SPRINGER**  
206.486.3114  
jordan@srecommercial.com

**DEVIN HASKELL**  
206.486.1428  
devin@srecommercial.com

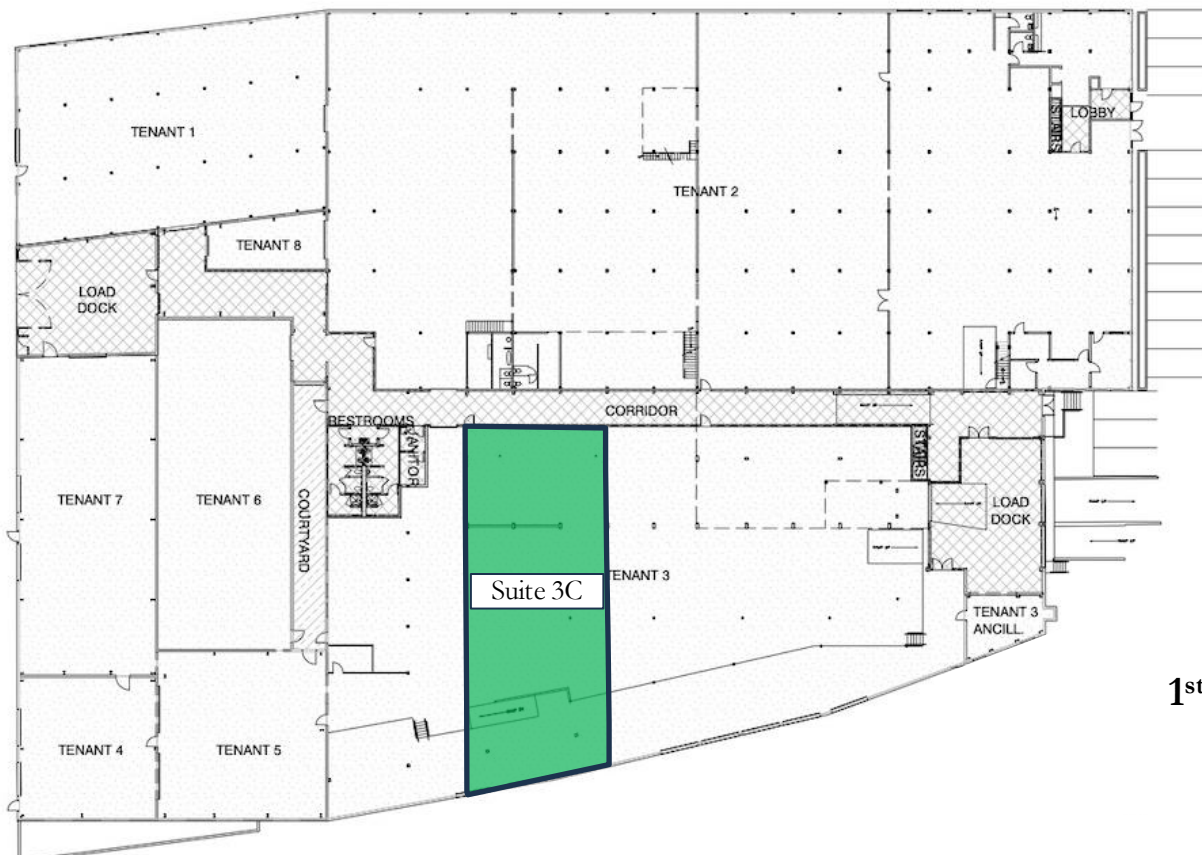
Suite 10



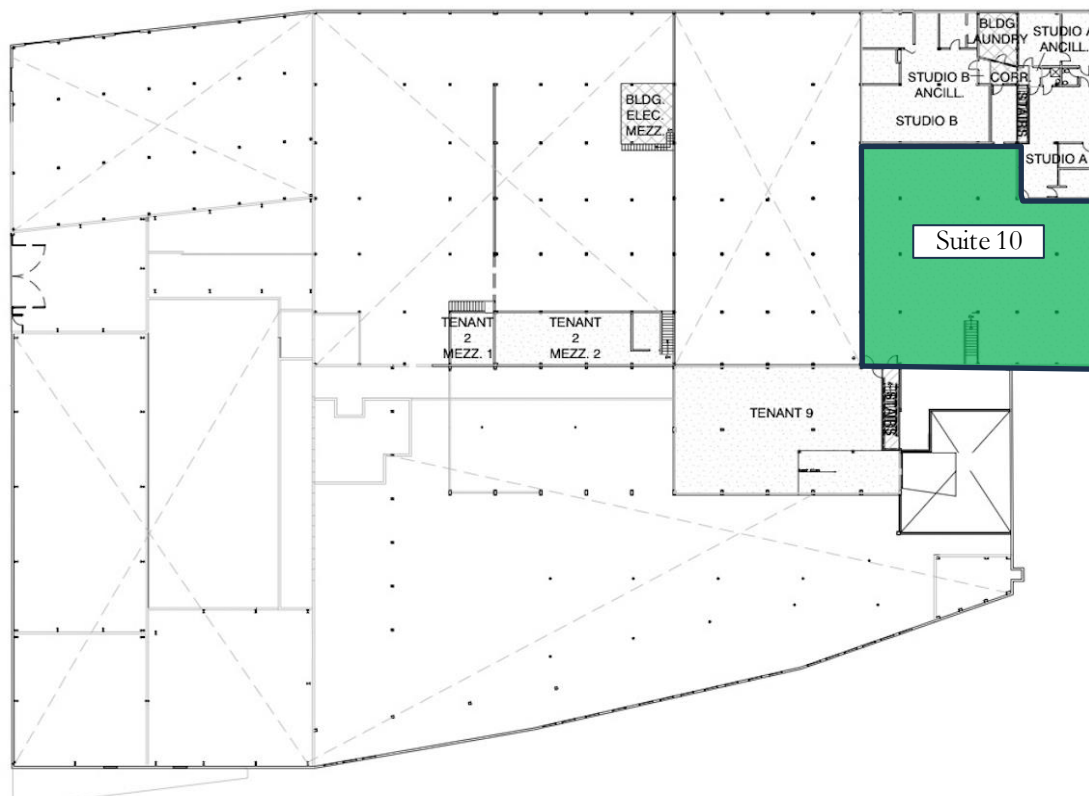
**TYLER SPRINGER**  
206.486.3112  
tyler@srecommercial.com

**JORDAN SPRINGER**  
206.486.3114  
jordan@srecommercial.com

**DEVIN HASKELL**  
206.486.1428  
devin@srecommercial.com



**1<sup>st</sup> Floor**



**2<sup>nd</sup> Floor**

**DISCLAIMER:** SRE represents the Landlord in this offering. Information contained herein has been obtained from reliable sources and is not guaranteed. Neither the Landlord nor SRE make any representations or warranties regarding the accuracy of this information. Prospective tenants should carefully verify all information contained herein.

**TYLER SPRINGER**  
 206.486.3112  
 tyler@srecommercial.com

**JORDAN SPRINGER**  
 206.486.3114  
 jordan@srecommercial.com

**DEVIN HASKELL**  
 206.486.1428  
 devin@srecommercial.com