

FOR SALE

67,500 SF



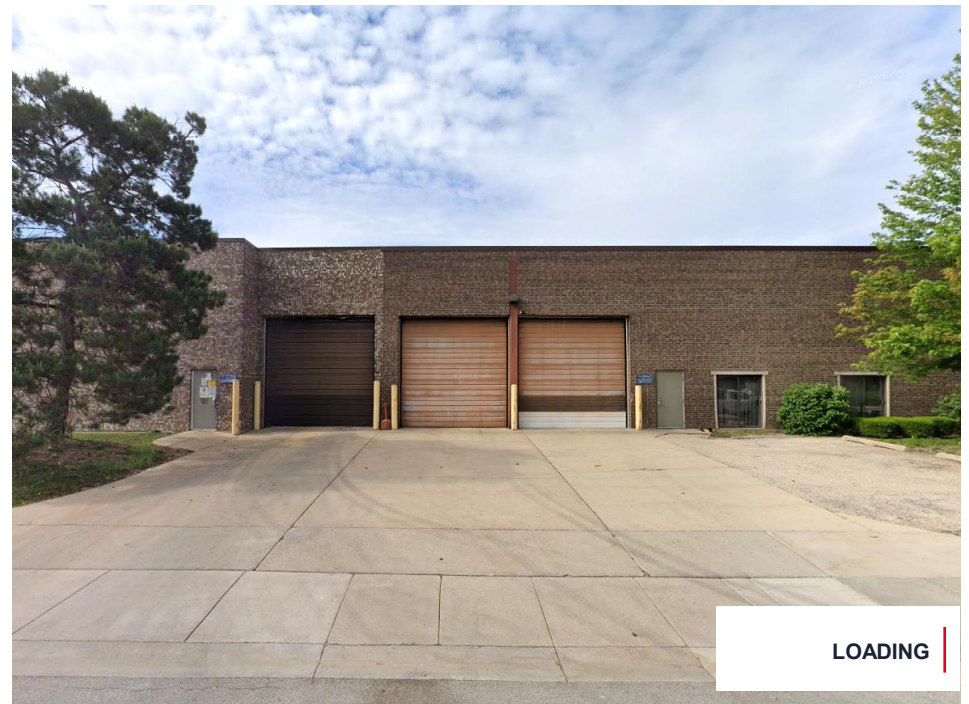
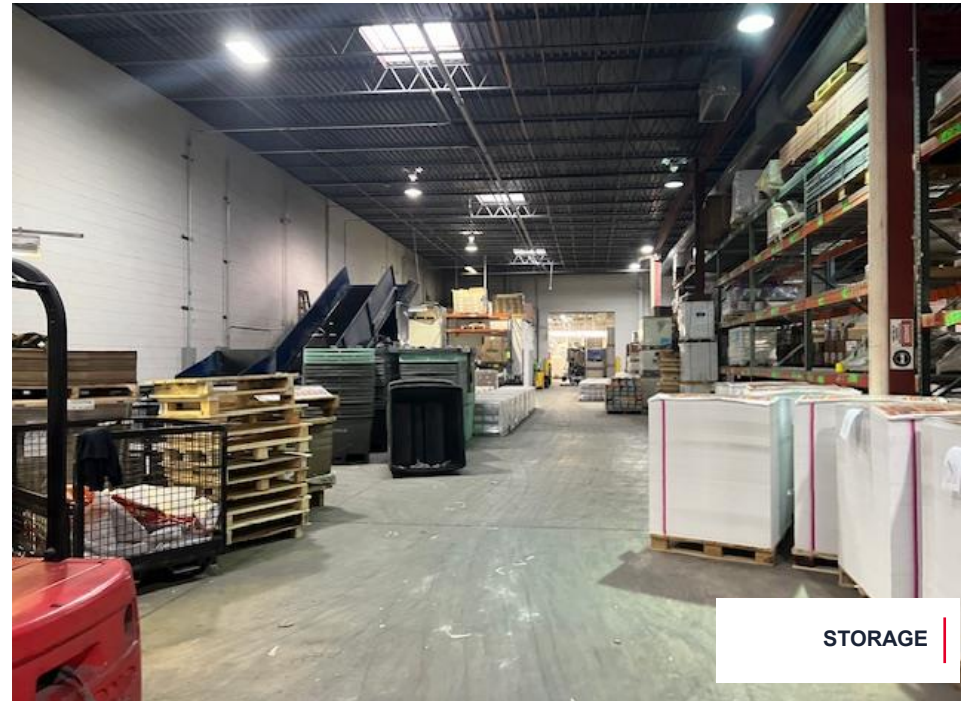
1536 Bourbon Parkway

STREAMWOOD, ILLINOIS

FULLY AIR CONDITIONED • HEAVY POWER

PROPERTY HIGHLIGHTS

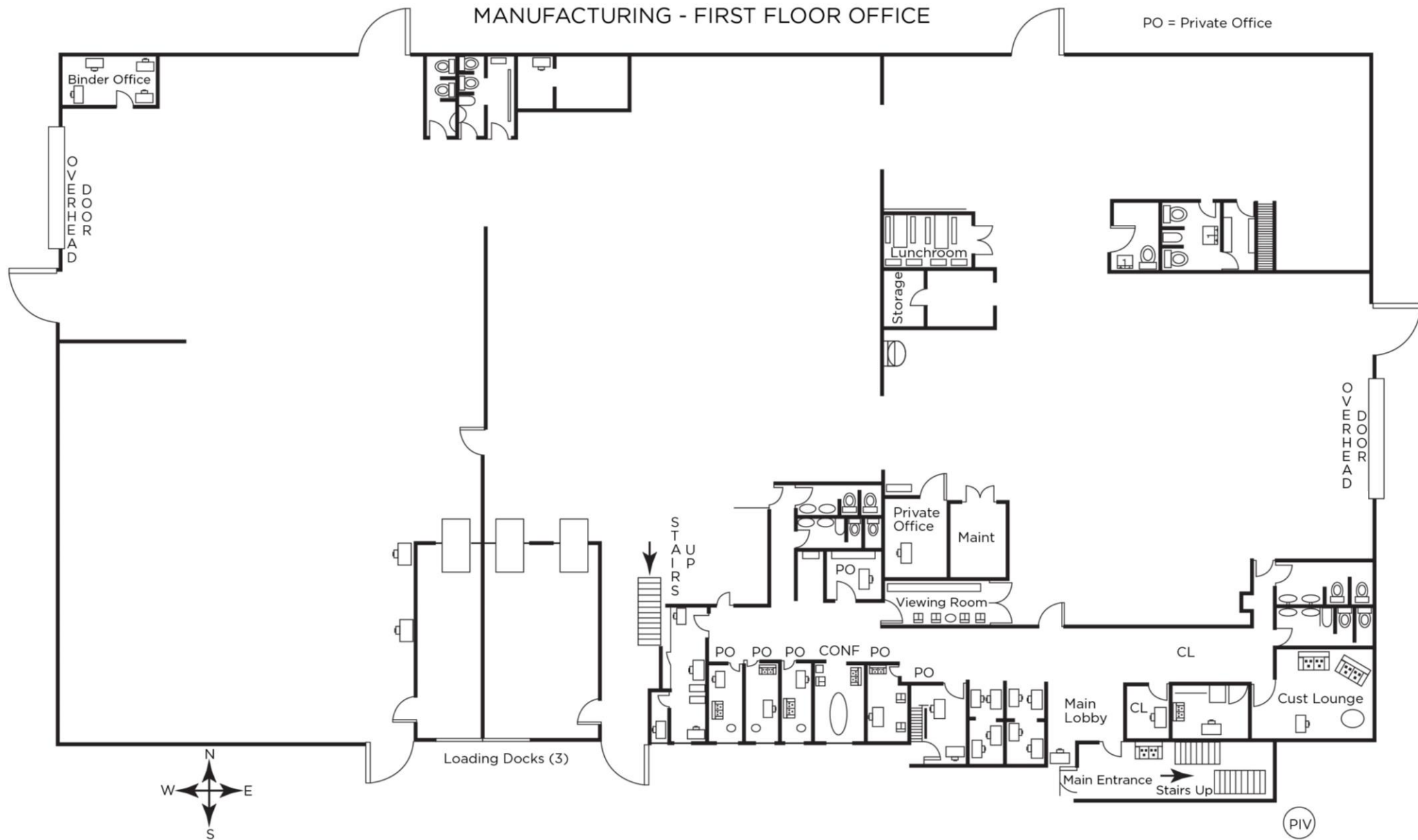
| | |
|----------------|--|
| Building Size: | 67,500 SF |
| Year Built: | 1980, Renovated 1991 |
| Office Area: | ±10,000 SF (not including mezzanine office) |
| Site Area: | ±2.65 Acres |
| Clear Height: | 14' - 20' |
| Loading: | 2 Drive-in-Doors (12x14 10x12) 3 Interior Docks |
| Parking: | 70 cars |
| Zoning: | I-1 – Generalized Industrial District |
| Power: | 6,000 Amps 480 Volts |
| Sprinkler: | Wet |
| Taxes: | (2023) \$1.95 PSF |
| Asking Price: | \$5,900,000 / \$87.41 PSF |

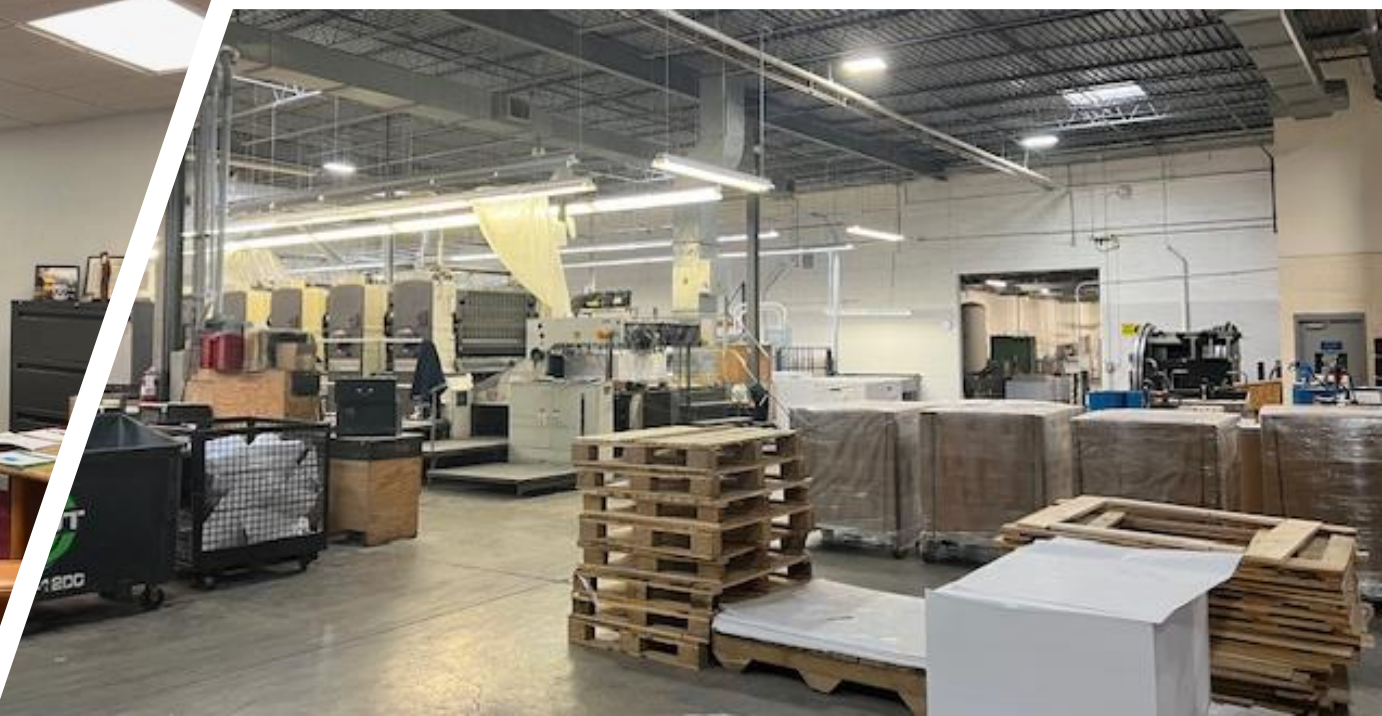


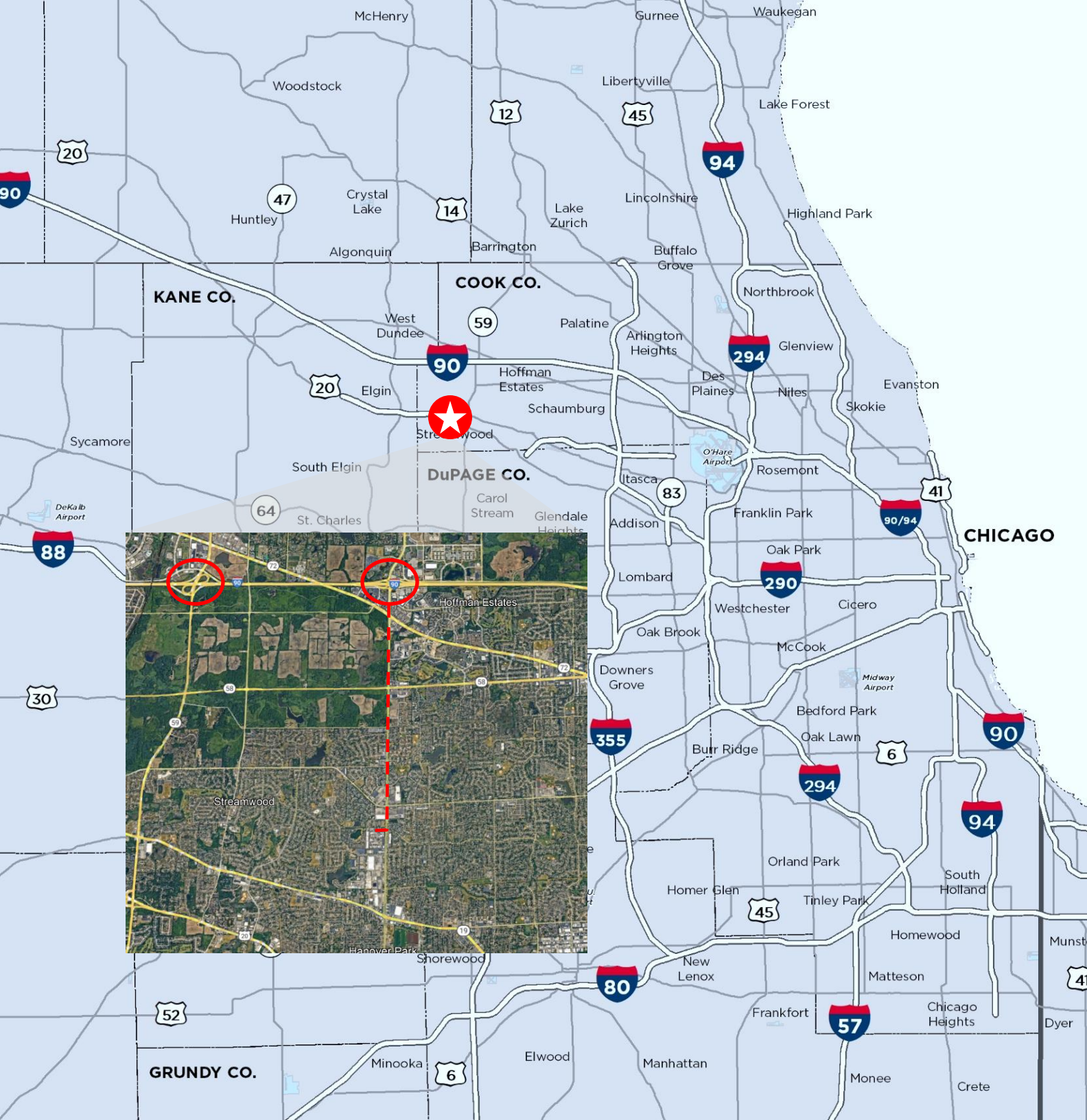
SITE PLAN

2.65 ACRES

1536 BOURBON PKWY | STREAMWOOD | ILLINOIS







3 MILES
TO I-90 INTERSTATE

20 MILES
TO O'HARE AIRPORT

34 MILES
TO CHICAGO CBD

CONTACT INFORMATION

DAVID FRIEDLAND

Executive Director

David.Friedland@Cushwake.com
847 720 1370

AL CARUANA

Executive Managing Director

Al.Caruana@Cushwake.com
847 720 1326

MICHAEL LABEK

Senior Associate

Michael.Labek@Cushwake.com
312 470 2309

