

17021 ALDINE WESTFIELD

HOUSTON, TX 77073

168,000 SF
AVAILABLE
FOR SALE OR LEASE



**BAKER
HUGHES**
a GE company

urban
Companies

design | development | construction
www.urbancompanies.com

TRANSWESTERN REAL ESTATE SERVICES

HQ RELOCATION OPPORTUNITY

BUILDING SIZE: 167,817 SF

LAND SIZE: +/- 43 Acres

FLOORS: 3

PARKING RATIO: 4/1,000

ADDITIONAL BUILDING FEATURES:

- Entire building is fully furnished
- Former Baker Hughes Headquarters
- All restrooms and elevators are ADA and code compliant
- Typical floorplate: 56K SF each
- The elevators are located in the common atrium so the floors can be subdivided into 28K SF pods or a total of 6 pods of that size



< 5 MINUTES
GEORGE BUSH
INTERNATIONAL
AIRPORT



25 MINUTES
DOWNTOWN
HOUSTON



9 MINUTES
TO I45







THE WOODLANDS

SPRING

**17021 Aldine
Westfield Rd.**

CYPRESS

LAKE HOUSTON

CHANNELVIEW

KATY

ENERGY CORRIDOR

GALLERIA

HOUSTON

PORT OF HOUSTON

BAYTOWN

PASADENA

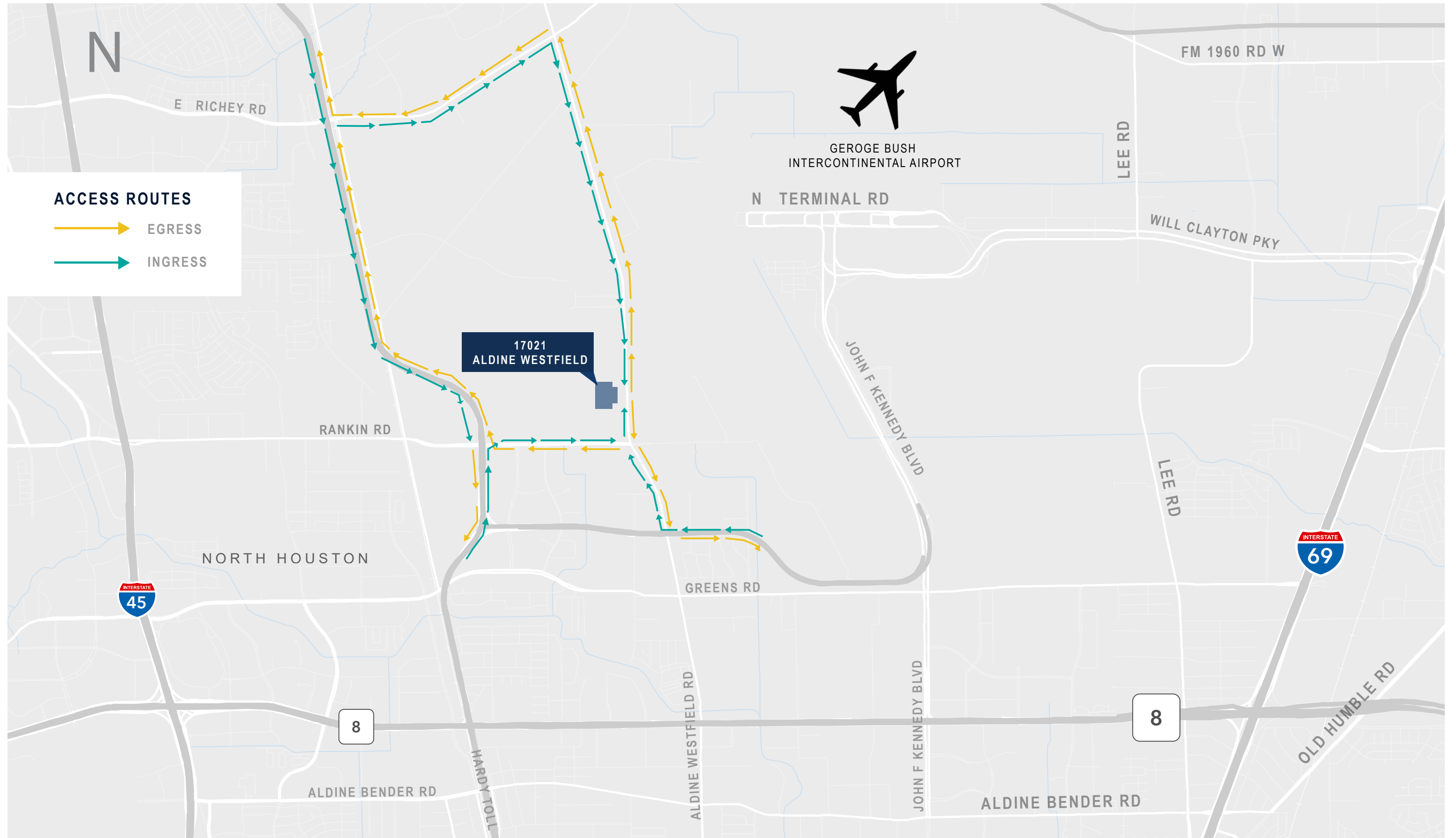
DEER PARK

LA PORTE

SUGAR LAND

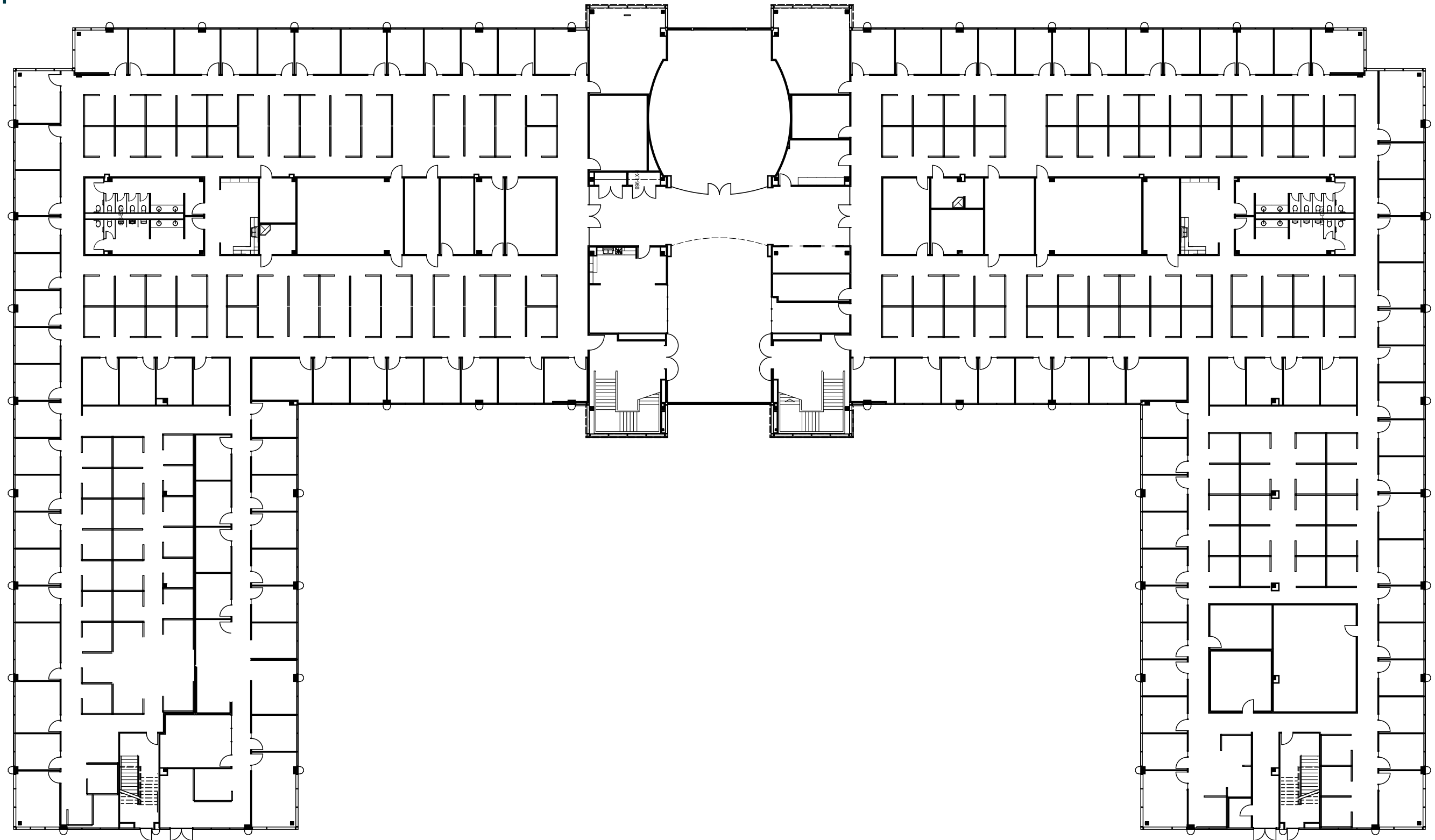


BUILDING ACCESS



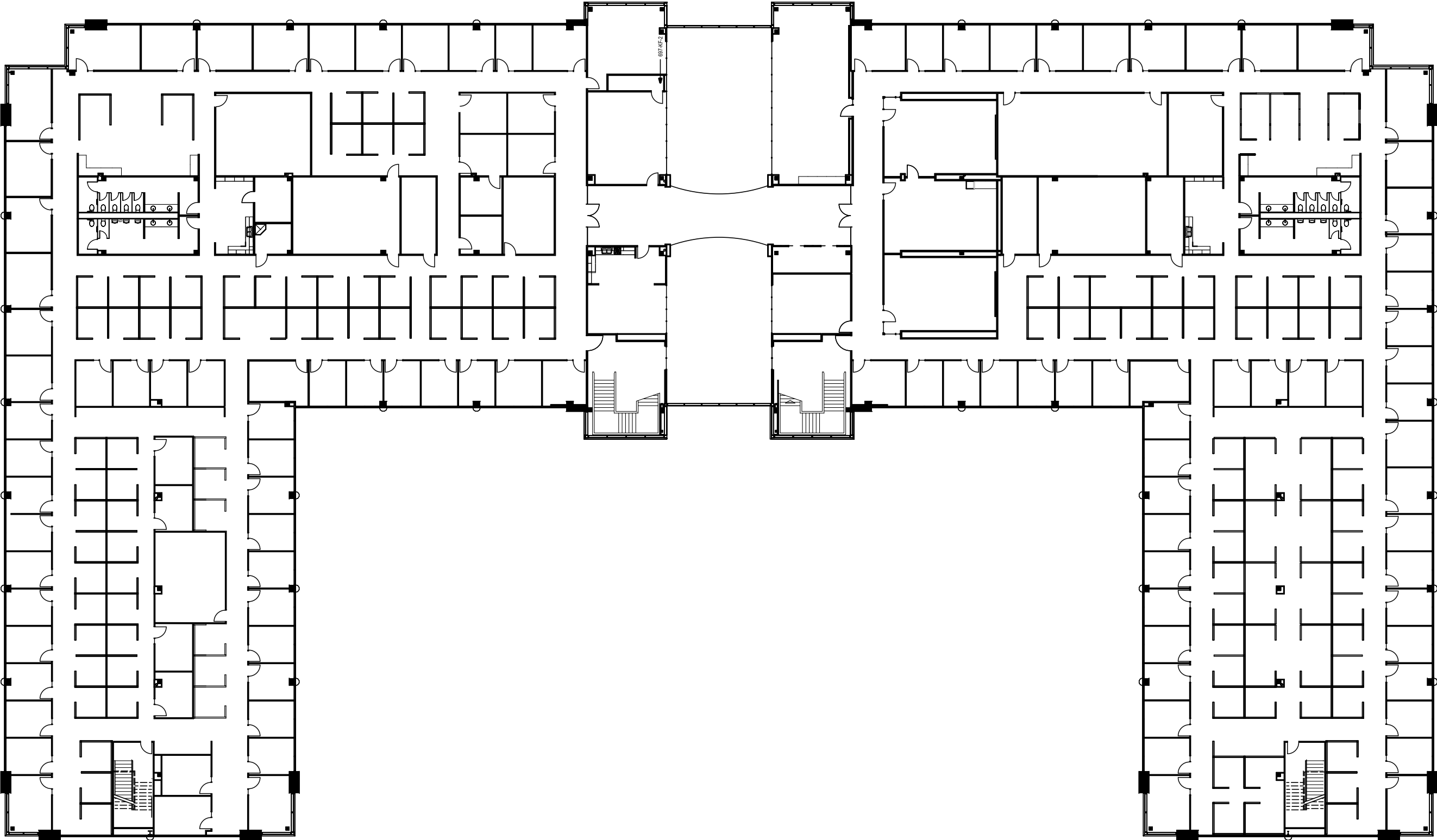
FLOOR PLANS

Level 1



FLOOR PLANS

Level 2



FLOOR PLANS

Level 3



FOR LEASING INFORMATION, CONTACT:

PARKER BURKETT

713.407.8716

parker.burkett@transwestern.com

ERIC ANDERSON

713.407.8704

eric.anderson@transwestern.com

 **TRANSWESTERN** REAL ESTATE SERVICES

urban
Companies

design | development | construction
www.urbancompanies.com

