

Warehouse | For Lease

CBRE

# Grenoble Commerce Center

2,750 SF Up To 10,191± SF Available

2419 Grenoble Road  
Richmond, Virginia 23294

\$12.00/SF NNN, \$1.20 NNN's - Ability To Subdivide



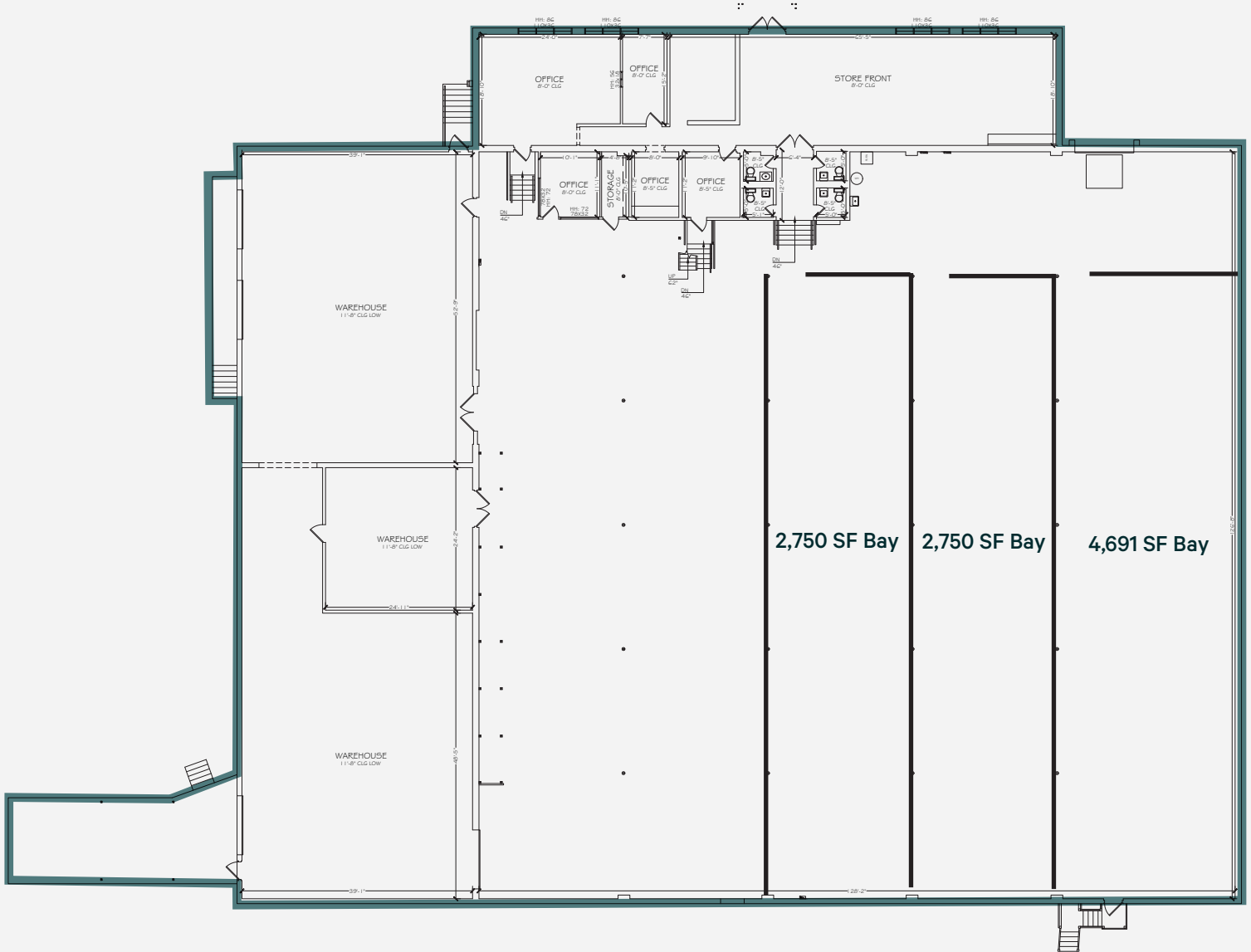
# Grenoble Commerce Center

2419 Grenoble Road | Richmond, Virginia 23294

## Property Features

- + 21,360± SF warehouse for lease
- + 2,400± SF office/showroom, 4,911± SF side warehouse
- + 12' clear height
- + Zoned M-1
- + Loading dock served
- + 3 new bays
- + 2,750 up to 4,691 SF
- + 3 loading dock positions
- + 2 truck height docks
- + Close proximity to I-64 and I-95
- + For Lease: \$12.00/SF NNN, \$1.20 NNN's

## Floor Plan



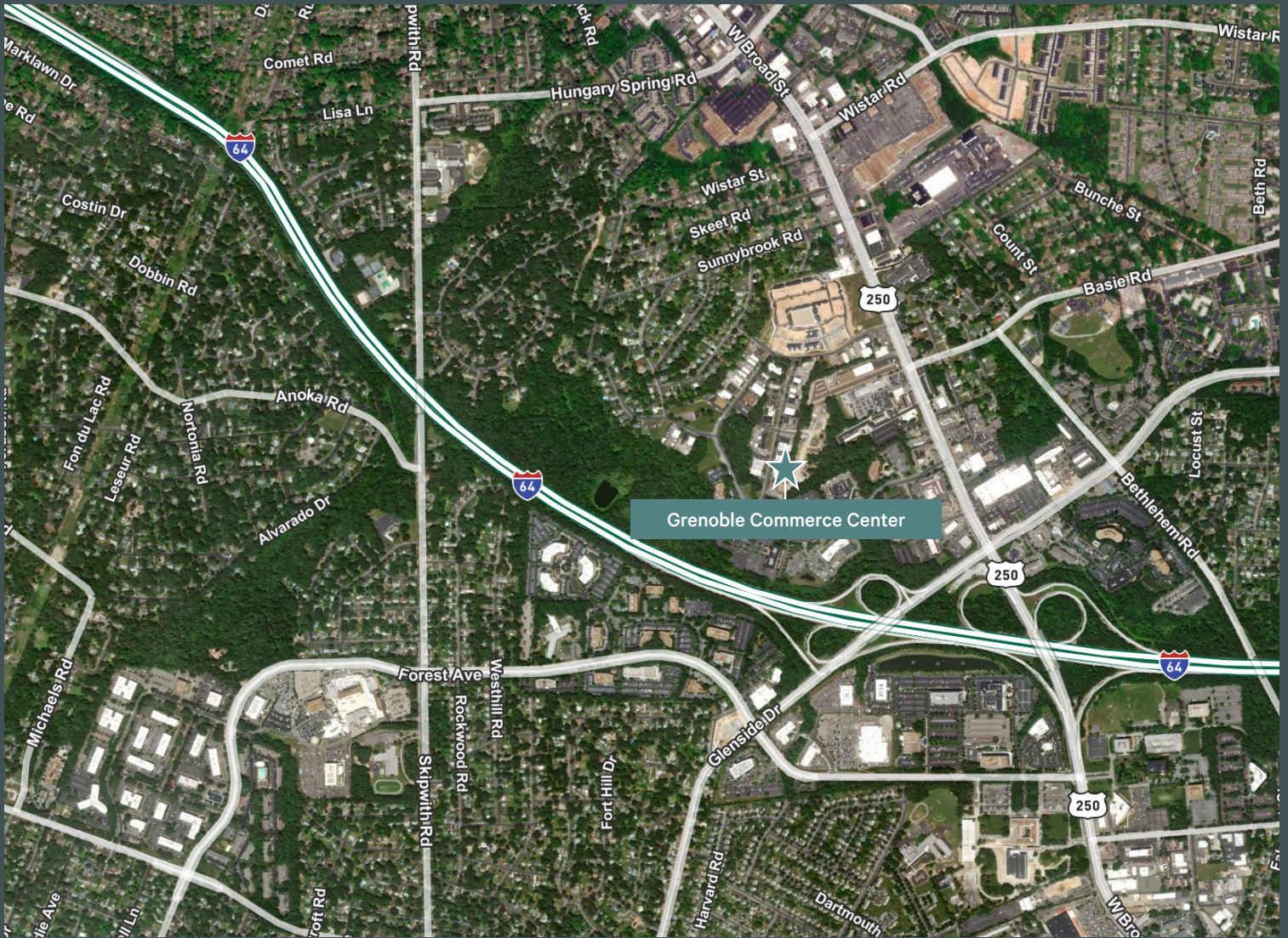


Local Demographics	1 Mile	3 Miles	5 Miles
Population	9,377	95,039	227,244
Households	3,902	39,758	98,364
Average Household Income	\$74,782	\$105,459	\$121,420

# Grenoble Commerce Center

2419 Grenoble Road | Richmond, Virginia 23294

# For Lease



## Contact Us

### Matt Hamilton

Senior Vice President

+1 804 401 4005

[matt.hamilton@cbre.com](mailto:matt.hamilton@cbre.com)

### CBRE

1802 Bayberry Court

Suite 201

Richmond, VA 23226

© 2023 CBRE, Inc. All rights reserved. This information has been obtained from sources believed reliable, but has not been verified for accuracy or completeness. You should conduct a careful, independent investigation of the property and verify all information. Any reliance on this information is solely at your own risk. CBRE and the CBRE logo are service marks of CBRE, Inc. All other marks displayed on this document are the property of their respective owners, and the use of such logos does not imply any affiliation with or endorsement of CBRE. Photos herein are the property of their respective owners. Use of these images without the express written consent of the owner is prohibited.