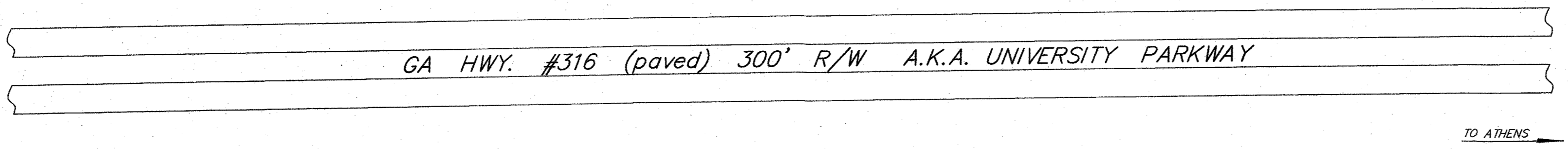
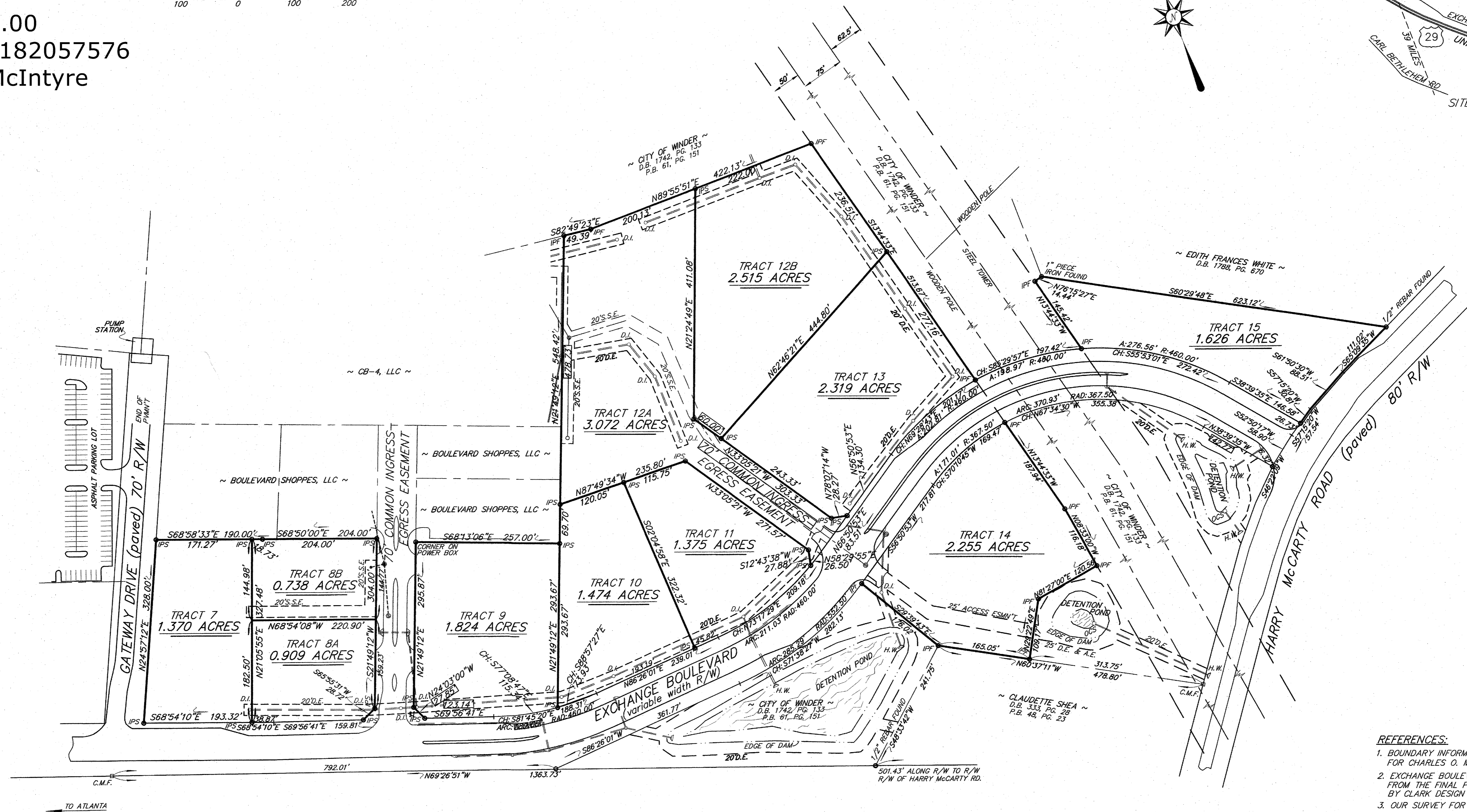
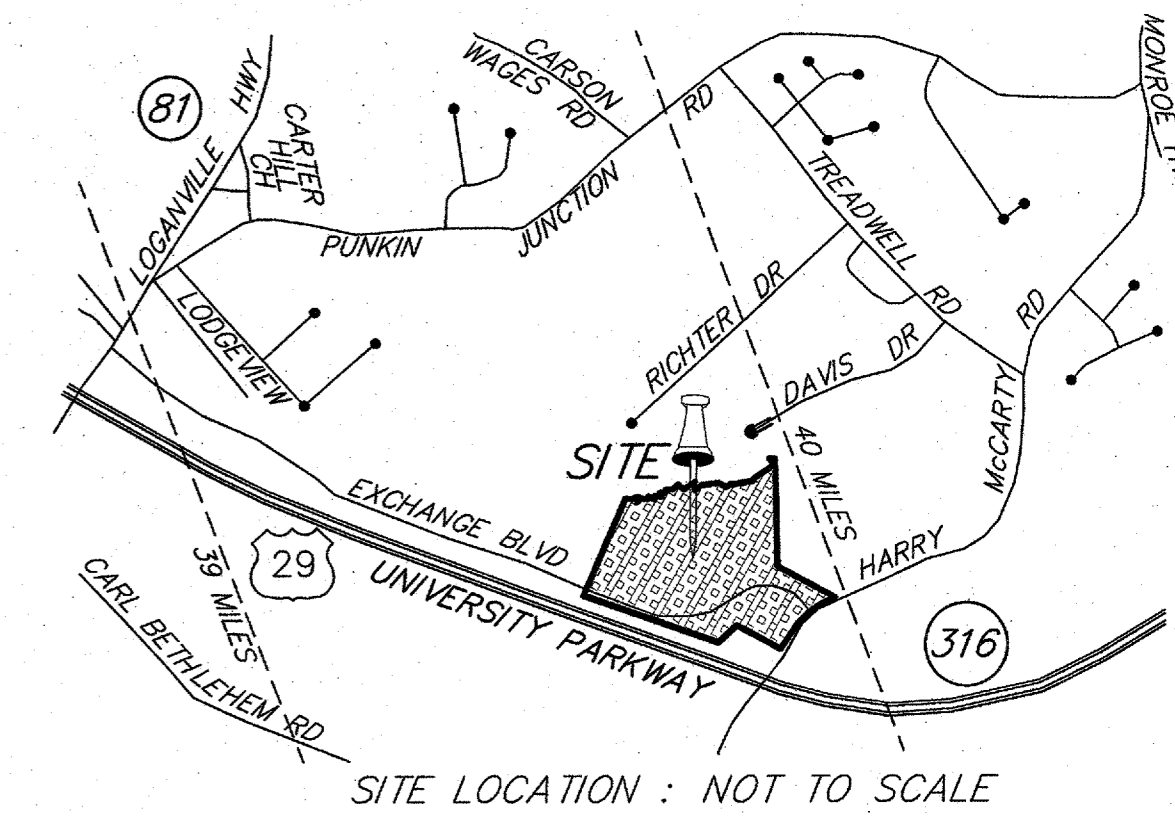
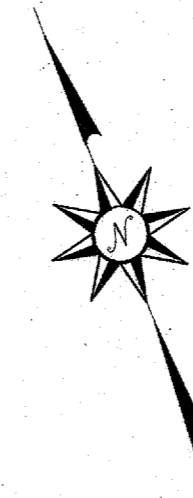
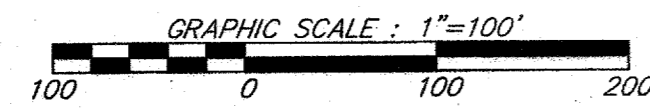


eFiled & eRecorded  
 DATE: 5/18/2018  
 TIME: 8:43 AM  
 PLAT BOOK: 64  
 PAGE: 00242  
 RECORDING FEE: 8.00  
 PARTICIPANT ID: 3182057576  
 CLERK: Regina B. McIntyre  
 Barrow County, GA



- REFERENCES:**
- BOUNDARY INFORMATION TAKEN FROM OUR SURVEY FOR CHARLES O. MADDOX, JR., DATED 8/1/1998.
  - EXCHANGE BOULEVARD R/W INFORMATION TAKEN FROM THE FINAL PLAT OF THE GATEWAY PHASE TWO BY CLARK DESIGN GROUP, DATED 6/5/2008.
  - OUR SURVEY FOR BOULEVARD SHOPPES, LLC, DATED 2/21/2017

- NOTES:**
- PONDS, STORM AND SANITARY SEWER WERE LOCATED ON GROUND WITH ELEVATIONS SHOWN.
  - FUTURE DEVELOPMENT OF TRACTS HAVE RIGHTS TO UTILIZE THE DETENTION PONDS WHICH WERE DESIGNED TO PROVIDE DETENTION FOR THOSE TRACTS.

- ~ LEGEND ~**
- C = CENTERLINE
  - H.W. = HEADWALL
  - M.H. = MANHOLE
  - CONC. = CONCRETE
  - P.L. = PROPERTY LINE
  - G.I. = GRATE INLET
  - PAV. = PAVEMENT
  - D.I. = DROP INLET
  - P.P. = POWER POLE
  - R/W = RIGHT OF WAY
  - L.P. = LIGHT POLE
  - C.B. = CATCH BASIN
  - J.B. = JUNCTION BOX
  - INV. = INVERT ELEVATION
  - F.H. = FIRE HYDRANT
  - S.P. = SLOPE OF POND
  - D.E. = DRAINAGE EASEMENT
  - C.M.P. = CORRUGATED METAL PIPE
  - S.S.E. = SANITARY SEWER EASEMENT
  - S.S.L. = SANITARY SEWER LINE
  - C.M.F. = CONCRETE MONUMENT FOUND
  - IPS = IRON PIN SET (1/2" OPEN TOP)
  - IPF = IRON PIN FOUND (1/2" OPEN TOP)

A TOPCON GTS-2B TOTAL STATION was used to obtain the linear and angular measurements used in the preparation of this plat. The field data upon which this plat is based has a closure precision of one foot in 21,500 feet and an angular error of  $\pm 2''$  per angle point and was adjusted using the compass rule. This survey has been calculated for closure and is found to be accurate within one foot in  $>100,000$  feet.

**SURVEYORS CERTIFICATION: (1)**  
 As required by subsection (1) of O.C.G.A. Section 15-6-67, this plat has been prepared by a land surveyor and approved by all applicable local jurisdictions for recording as evidenced by approval certificates, signatures, stamps, or statements hereon. Such approvals or affirmations should be confirmed with appropriate governmental bodies by any purchaser or user of this plat as to intended use of any parcel. Furthermore, the undersigned land surveyor certifies that this plat complies with the minimum technical standards for property surveys in Georgia as set forth in the rules and regulations of the Georgia Board of Registration for Professional Engineers and Land Surveyors and as set forth in O.C.G.A. Section 15-6-67.

*W. T. Dunahoo*  
 W. T. Dunahoo (GA RLS #1577)  
 No. 1577 PROFESSIONAL SURVEYOR  
 W. T. DUNAHOO  
 Date 3-19-18

*BARRY ESCAR*  
 BARRY ESCAR, PLANNING DEPT.  
 APPROVED

SURVEY FOR		STATE OF GEORGIA	
<b>BOULEVARD SHOPPES, LLC</b>			
CITY	GMD	COUNTY	SCALE
WINDER	249	BARROW	1"=100'
DATE		DATE	
3/16/2018		3/16/2018	
W. T. DUNAHOO AND ASSOCIATES, L.L.C.			
P.O. BOX 163 302 W. MAIN ST.		WINDER, GEORGIA (770) 867-3911	