

# 1155 F STREET

TROPHY DESIGN | EFFICIENT PERFORMANCE







## **Douglas Development** CORPORATION

For over three decades, Douglas Development Corporation has garnered redevelopment successes in the District of Columbia, as well as in suburban Virginia and Maryland. Douglas Development has earned a reputation for revitalizing underdeveloped, emerging areas and continues to win praise from local government authorities, community members, neighbors, and the real estate community at large.



Dominating F Street between 11th and 12th Streets NW, 1155 F Street is the perfect blend of history and performance. Designed in 2009 by architects Shalom Barnes and Pei, Cobb, Freed & Partners, the building is a stunning showcase of a modern and efficient office building artfully merged with the charisma of seven historic row homes via a breathtaking atrium.





TOSCA



## NEIGHBORHOOD + CONVENIENCE

In the heart of DC's East End, 1155 F Street offers one of the most compelling arrays of service amenities, high-end dining options, retailers, museums and transportation options within just steps from the building's front doors.





## DESIGN + PERFORMANCE

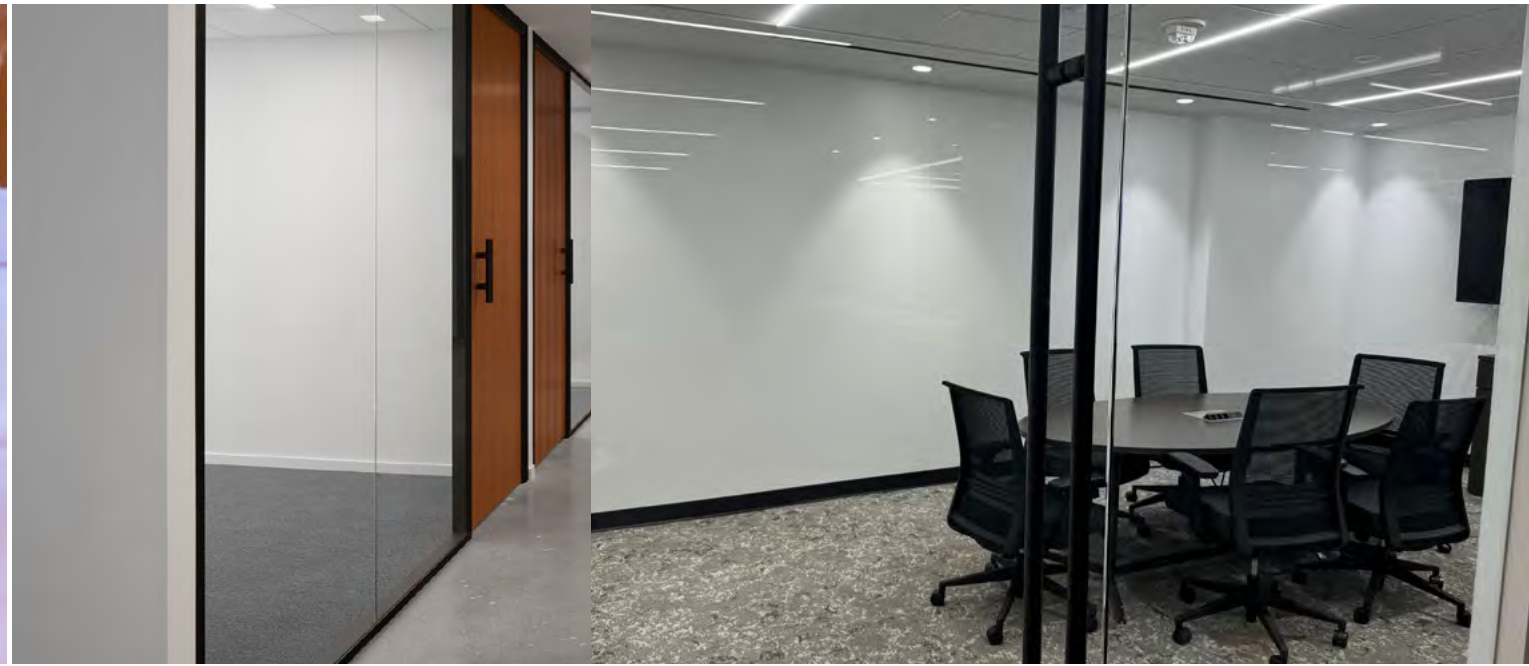
- Size: 260,000 RSF
- Floor-to-ceiling glass curtain wall system
- 30' by 30' column spacing
- New Conference Center Available for all tenants
- State-of-the-art fitness center
- Fully renovated with spectacular views
- 24-hour lobby attendant
- Three levels of underground parking

## HOSPITALITY + REFINEMENT

In early 2020, 1155 F delivered a series of modern, well-appointed and thoughtful renovations to the rooftop terrace, and main atrium lobby that included:

- Full renovation of and enhancements to the rooftop terrace and interior common areas serving the rooftop terrace, including new plantings, furnishings and technology, as well as renovation of the interior breakout areas and restrooms serving the rooftop terrace; and
- Enhancements to the main lobby, to include new furnishings, lighting elements and technology.







ROOF TERRACE

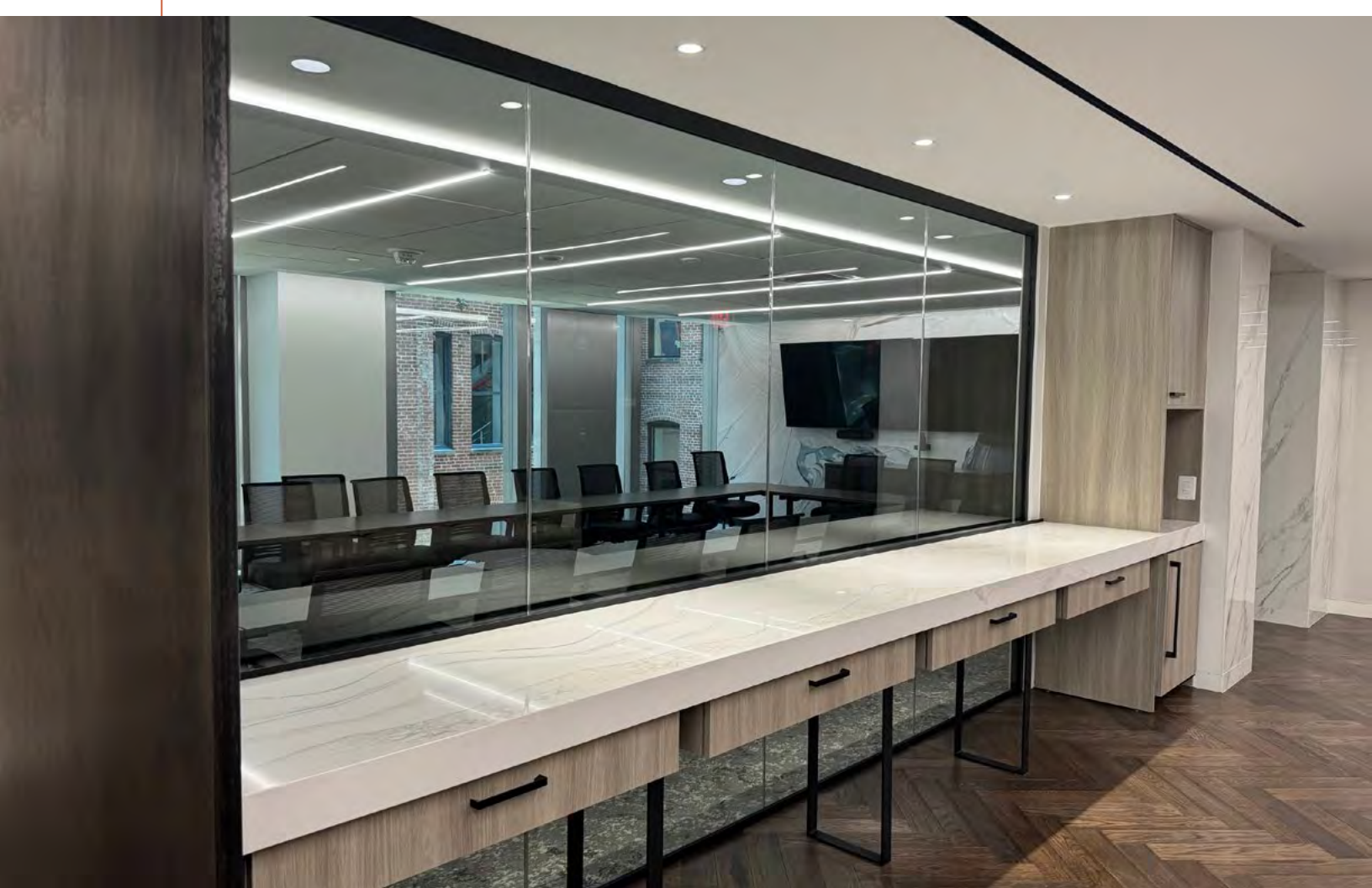


1155 F STREET



1155 F STREET

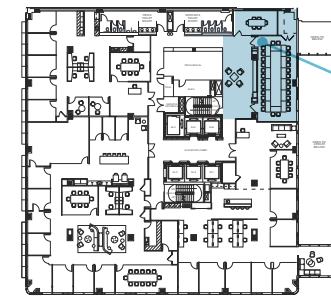




1155 F STREET

## CONFERENCE CENTER

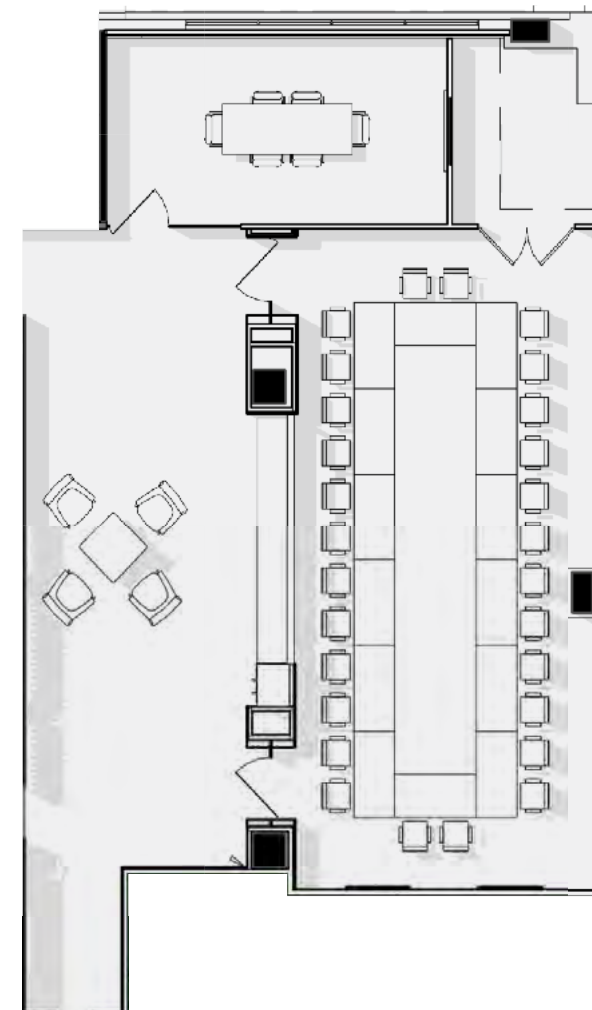
12TH STREET NW NW



F STREET NW

CONFERENCE  
CENTER

3<sup>RD</sup> FLOOR



55  
CLASSROOM LAYOUT

28  
BOARDROOM LAYOUT

AVAILABILITIES

5<sup>TH</sup> FLOOR

SUITE A - 4,148 RSF  
SUITE B - 5,213 RSF

DELIVERING SPRING 2026

BRAND NEW SPEC SUITES



SUITE A

SUITE B

F STREET

AVAILABILITIES

6<sup>TH</sup> FLOOR

16,976 RSF  
AVAILABLE IMMEDIATELY



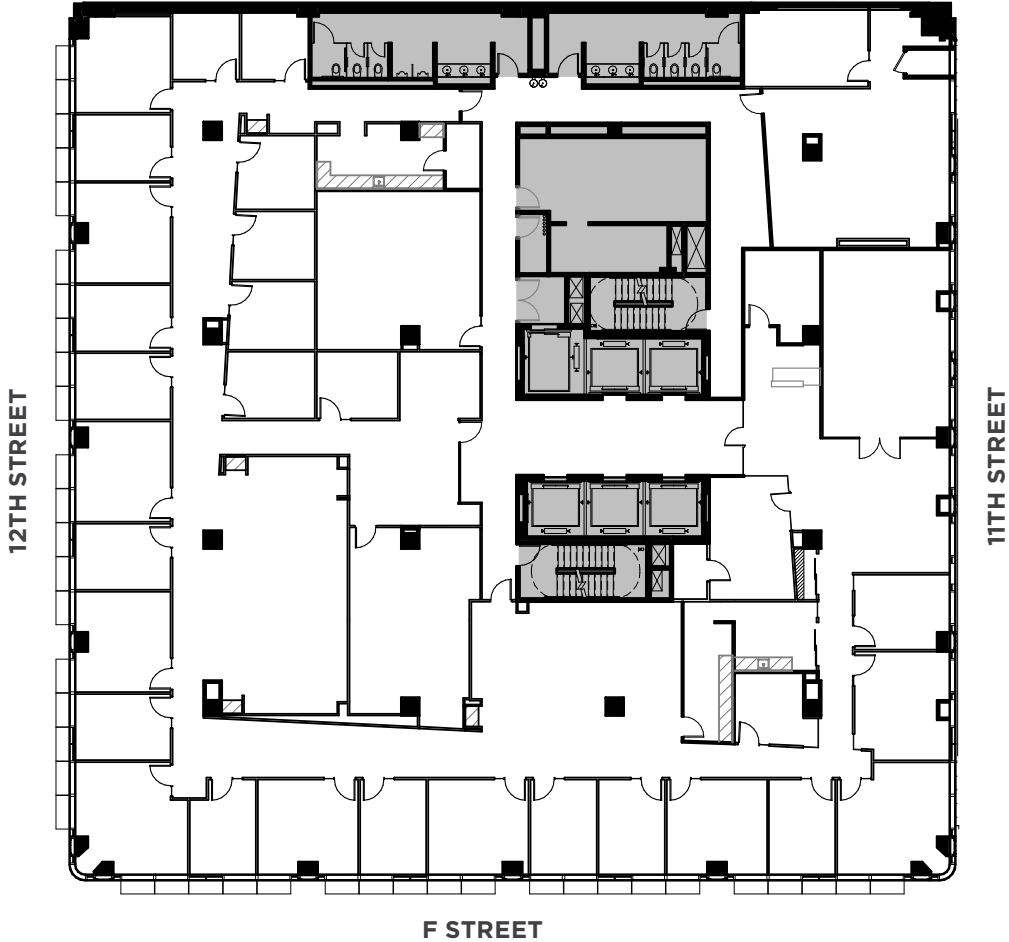
LEASED

F STREET



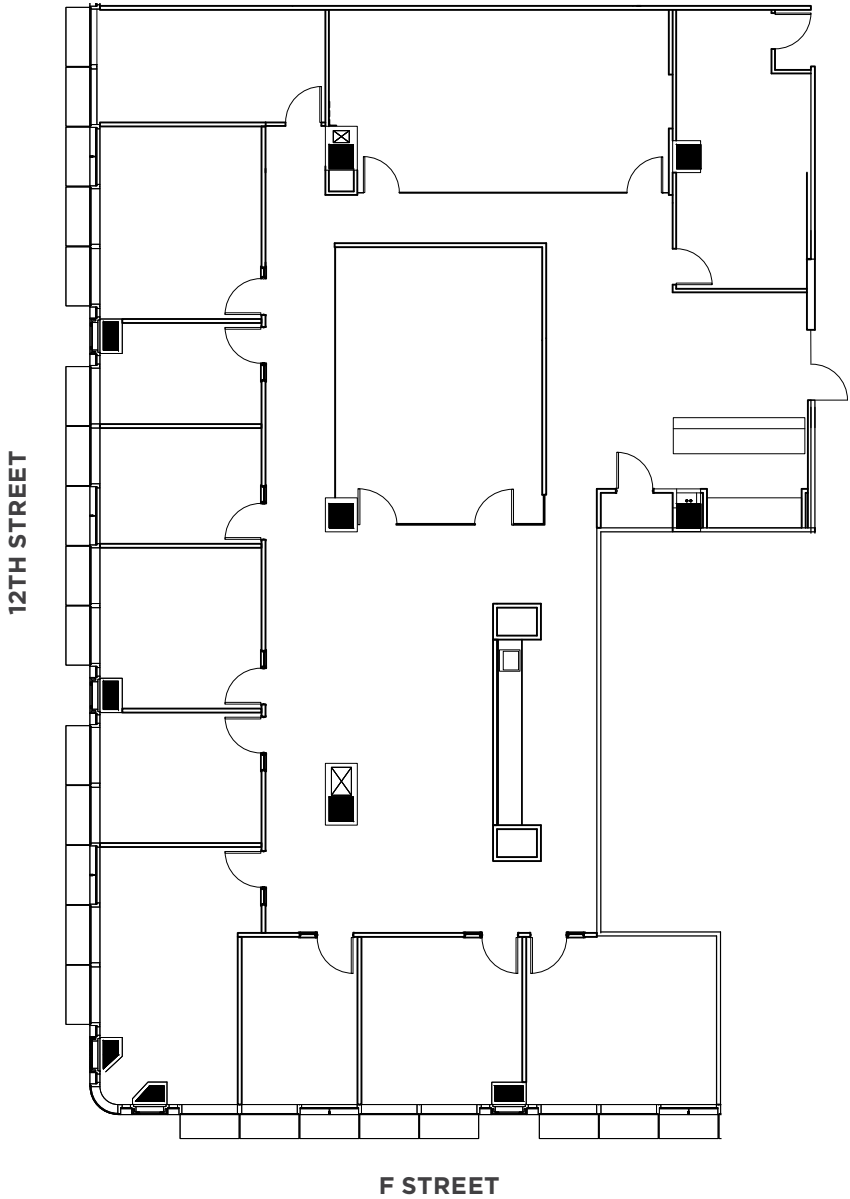
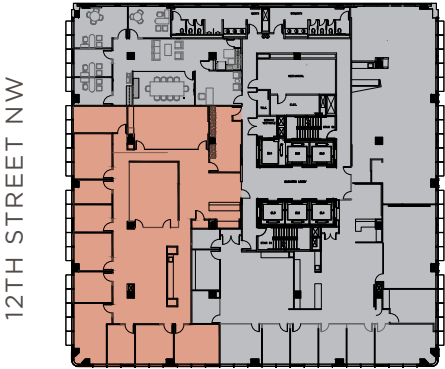
AVAILABILITIES

8<sup>TH</sup> FLOOR  
17,259 RSF  
AVAILABLE IMMEDIATELY



AVAILABILITIES

9<sup>TH</sup> FLOOR  
SPEC SUITE  
6,450 RSF  
AVAILABLE APRIL 2026





AVAILABILITIES

11<sup>TH</sup> FLOOR

5,703 RSF

AVAILABLE IMMEDIATELY





# 1155 F STREET

---

TROPHY DESIGN + EFFICIENT PERFORMANCE

---

1155 F Street, NW | Washington, DC 20004

---

**FOR MORE INFORMATION PLEASE CONTACT:**

**Bruce Pascal** | [bruce.pascal@cushwake.com](mailto:bruce.pascal@cushwake.com) | (202) 463 2100

**Mark Wooters** | [mark.wooters@cushwake.com](mailto:mark.wooters@cushwake.com) | (202) 463 2100

**Gina Damond** | [gina.damond@cushwake.com](mailto:gina.damond@cushwake.com) | (202) 407 8127

