

MEDICAL SPACE FOR LEASE

2828 Medical Building

2828 Chicago Avenue S, Minneapolis, MN 55407



MEDICAL SPACE FOR LEASE

2828 Medical Building

2828 Chicago Avenue S, Minneapolis, MN 55407

Building Information:

| | |
|----------------------------|--|
| Address | 2828 Chicago Avenue, Minneapolis, MN 55407 |
| Total Rentable Square Foot | 56,239 |
| Space Available | 39,012 rsf |
| Maximum Contiguous Space | 14,473 rsf |
| Number of Floors | 4 |

Amenities:

- Conveniently located on the Abbott Northwestern and Children's Hospital Campus
- Excellent visibility and easily accessible
- Connected to both hospitals via tunnel
- Ample parking in adjacent ramp
- Referral relationships among peers

Anchor Tenant:

Allina Health

Terms and availability subject to change without prior notice.

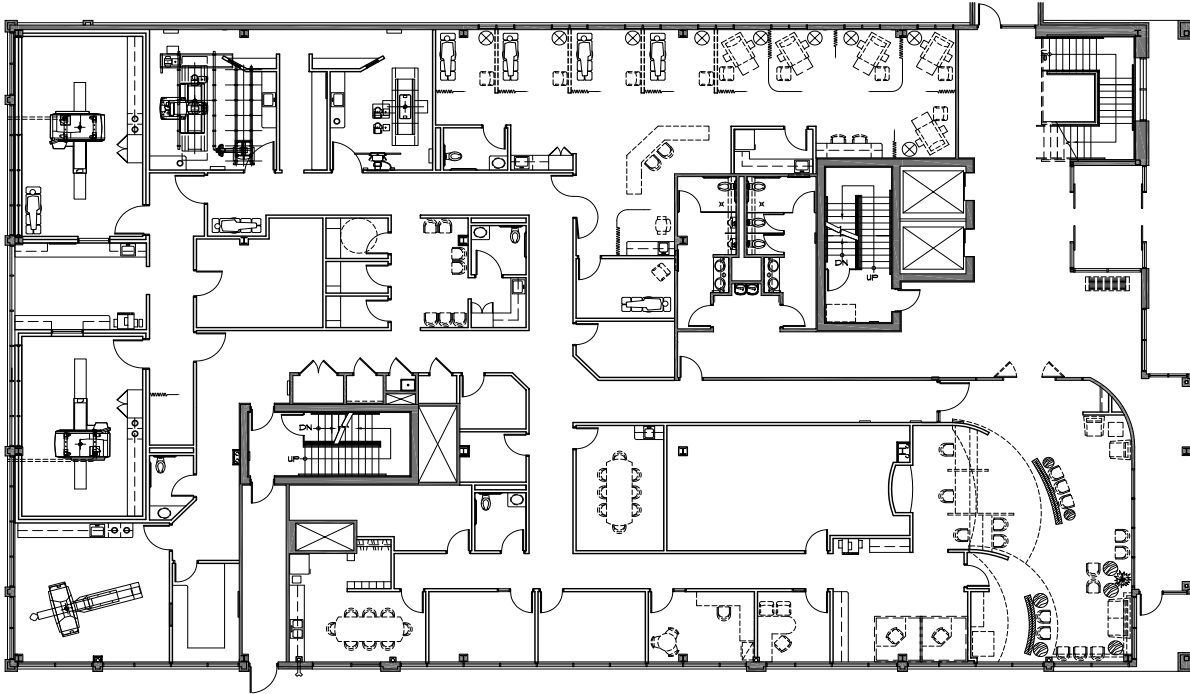
For Leasing Information:

Mike Fleetham | 952-767-2842 | MFleetham@MedCraft.com

Jolene Ludvigsen | 952-838-7126 | JLudvigsen@MedCraft.com



FIRST FLOOR



Suite 100
AVAILABLE
12,949 SF

SECOND FLOOR



Suite 200
AVAILABLE
14,473 SF

MEDICAL SPACE FOR LEASE

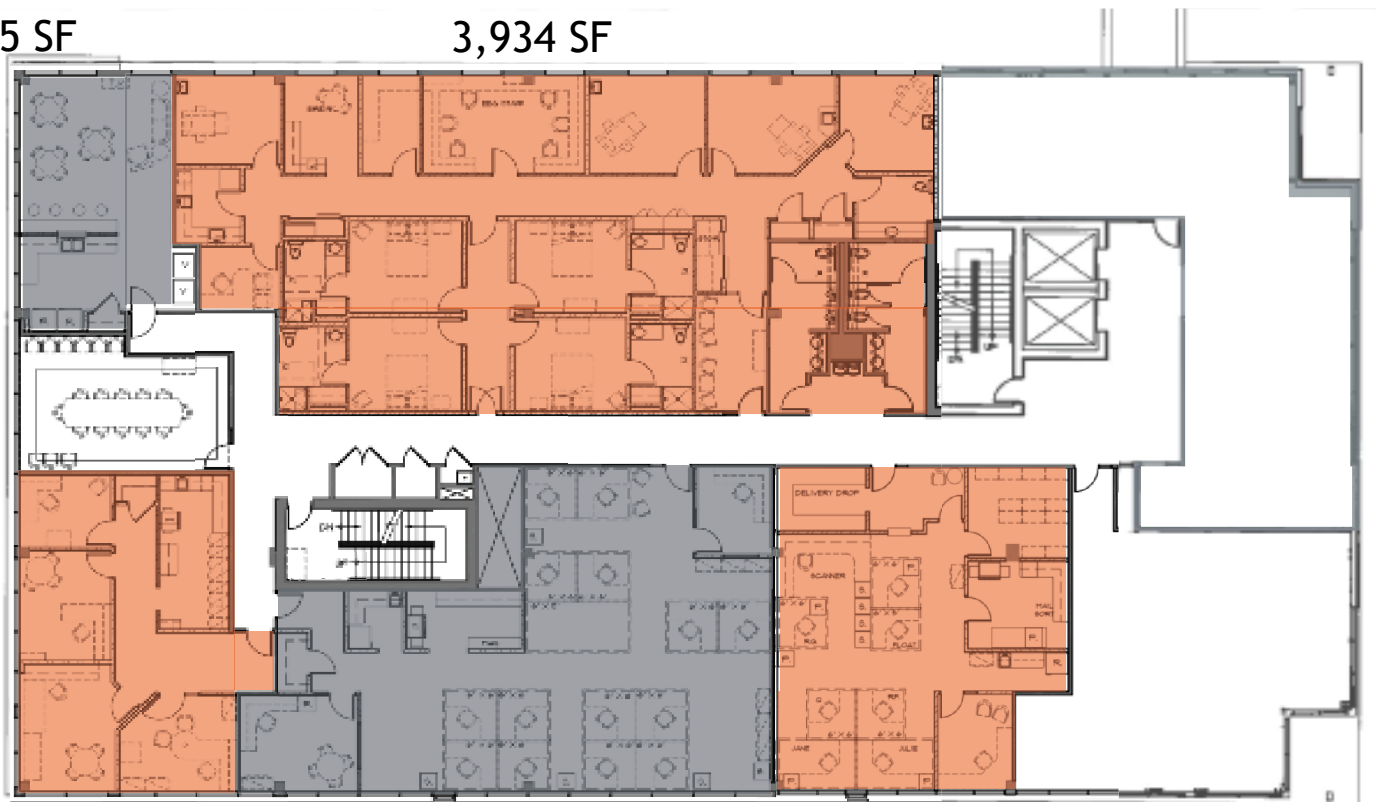
2828 Medical Building

2828 Chicago Avenue S, Minneapolis, MN 55407

THIRD FLOOR

Suite 330
AVAILABLE
745 SF

Suite 300
AVAILABLE
3,934 SF



Suite 320
AVAILABLE
1,313 SF

Suite 315
AVAILABLE
2,459 SF

Suite 310
AVAILABLE
1,763 SF

For Leasing Information:

Mike Fleetham | 952-767-2842 | MFleetham@MedCraft.com

Jolene Ludvigsen | 952-838-7126 | JLudvigsen@MedCraft.com

medcraft.com



Abbott Northwest Hospital Campus



For Leasing Information:

MIKE FLEETHAM

(952) 767-2842

MFleetham@MedCraft.com

JOLENE LUDVIGSEN

(952) 838-7126

JLudvigsen@MedCraft.com



MedCraft

Healthcare Real Estate

medcraft.com