



ZACUTO GROUP
COMMERCIAL REAL ESTATE

**\$2.00/PSF BROKER BONUS
ON A 5 YEAR LEASE!**

1ST YEAR TEASER RATE: \$3.95/SF



8820

WILSHIRE BLVD

Beverly Hills

**FOR LEASE
HIGH END
CREATIVE
OFFICES**

LEASE DETAILS

8820

WILSHIRE BLVD

Beverly Hills

**\$2.00/PSF
BROKER BONUS
ON A 5 YEAR LEASE!**

**1ST YEAR
TEASER RATE:
\$3.95/SF**

AVAILABILITIES

Suite 230A - 2,400-3050 SF

PARKING

2.5/1,000

\$295 - reserved

\$205 - unreserved

TEASER RATE

***\$3.95/SF MG**

*1st year \$3.95/SF

2nd year \$4.50/SF

TERM

Negotiable

- Prime Beverly Hills location, walkable to many world renowned restaurants, retail and amenities

- Secure building with key fob entry and on-site manager

- Tenant Controlled HVAC, kitchenette, private restrooms, exposed high ceilings, high end finishes

- Irreplaceable location on Wilshire Blvd and Robertson Blvd

LISTING TEAM



JAKE ZACUTO

Managing Director

310.469.9012

jake@zacutogroup.com

DRE #01377441

LEOR BINSHTOCK

Executive Vice President

310.469.9014

leor@zacutogroup.com

DRE #01773798

JOHN LOGAN

Associate Vice President

931.561.9561

john@zacutogroup.com

DRE# 02161147

Professionally Managed by:



KING'S ARCH



LEASE



Suite 230A

Details

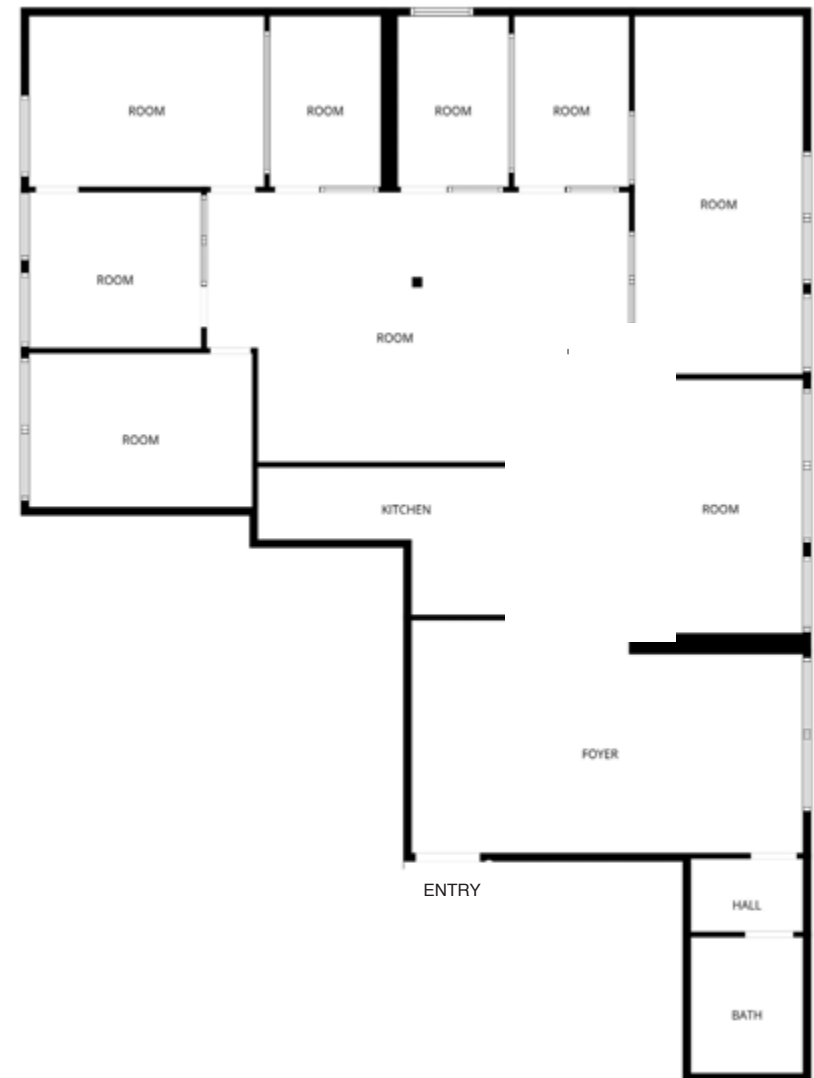
High-end finishes:

- Oak floors
- Stainless steel appliances
- Steel and glass office enclosures
- Operable windows

Layout features:

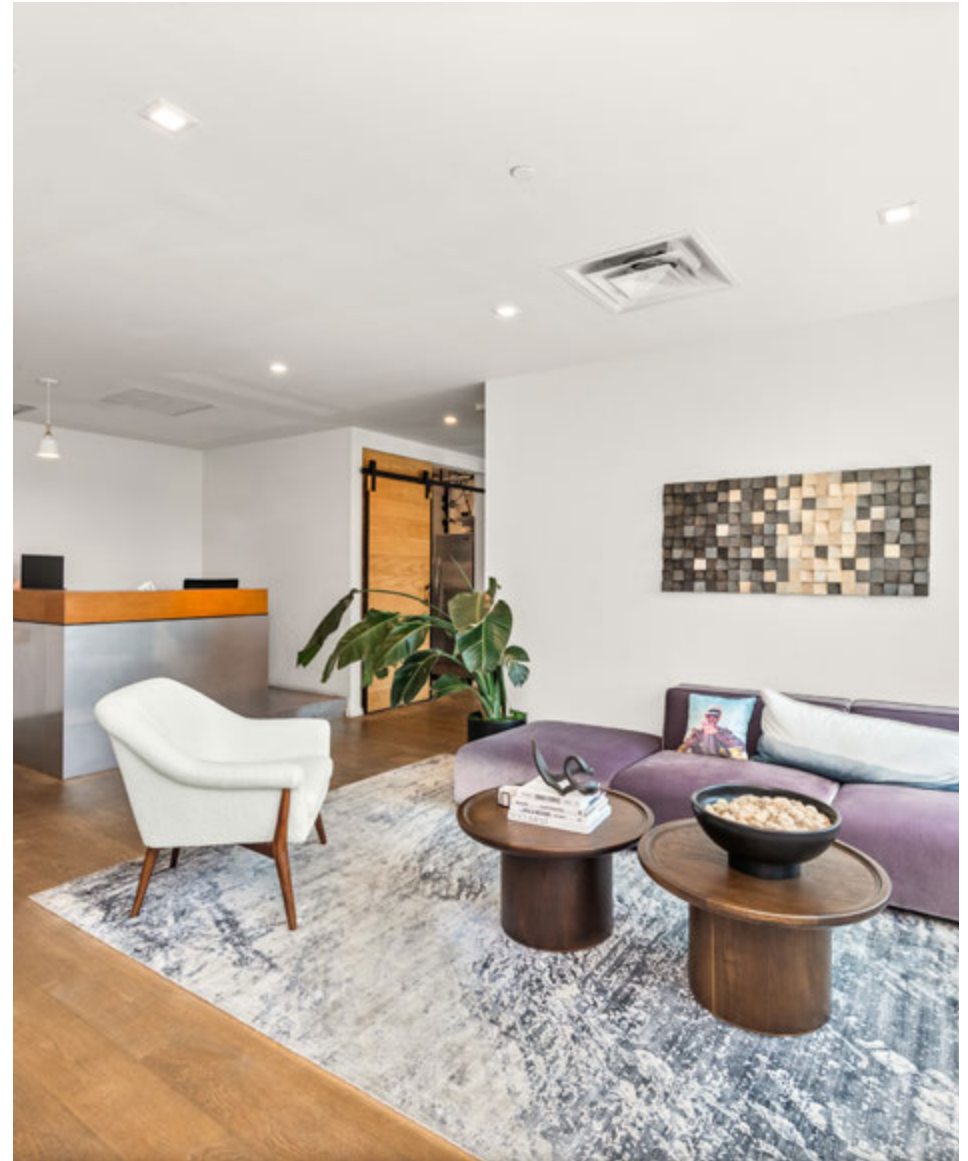
- In-suite private restroom
- 7 private offices
- Large conference room
- Kitchenette

Suite
230A
Floor plan



LEASE
Suite 230A

8820 WILSHIRE BLVD, BEVERLY HILLS, CA 90211



LEASE
Suite 230A

8820 WILSHIRE BLVD, BEVERLY HILLS, CA 90211



LEASE
Suite 230A

8820 WILSHIRE BLVD, BEVERLY HILLS, CA 90211



Prime Beverly Hills Location

PRIME CORNER OF
WILSHIRE + ROBERTSON

INCREDIBLY HIGH TRAFFIC

75K+
Cars/day

ICONIC WALKABILITY

93
Walkscore

NEAR SOME THE BEST
OF BEVERLY HILLS

SUMMER
FISH & RICE

 **goop**
KITCHEN


LA GONDOLA
BEVERLY HILLS
EST. 1981


FOUR SEASONS
HOTELS AND RESORTS

YASU
BEVERLY HILLS

The Ivy
RESTAURANTS


a.o.c.

il Pastaio
Ristorante • Bar


SLS HOTEL
BEVERLY HILLS

EST. 1915
NEW YORK CITY
DANTE
Beverly Hills


KAZIN
HOTELS & RESORTS

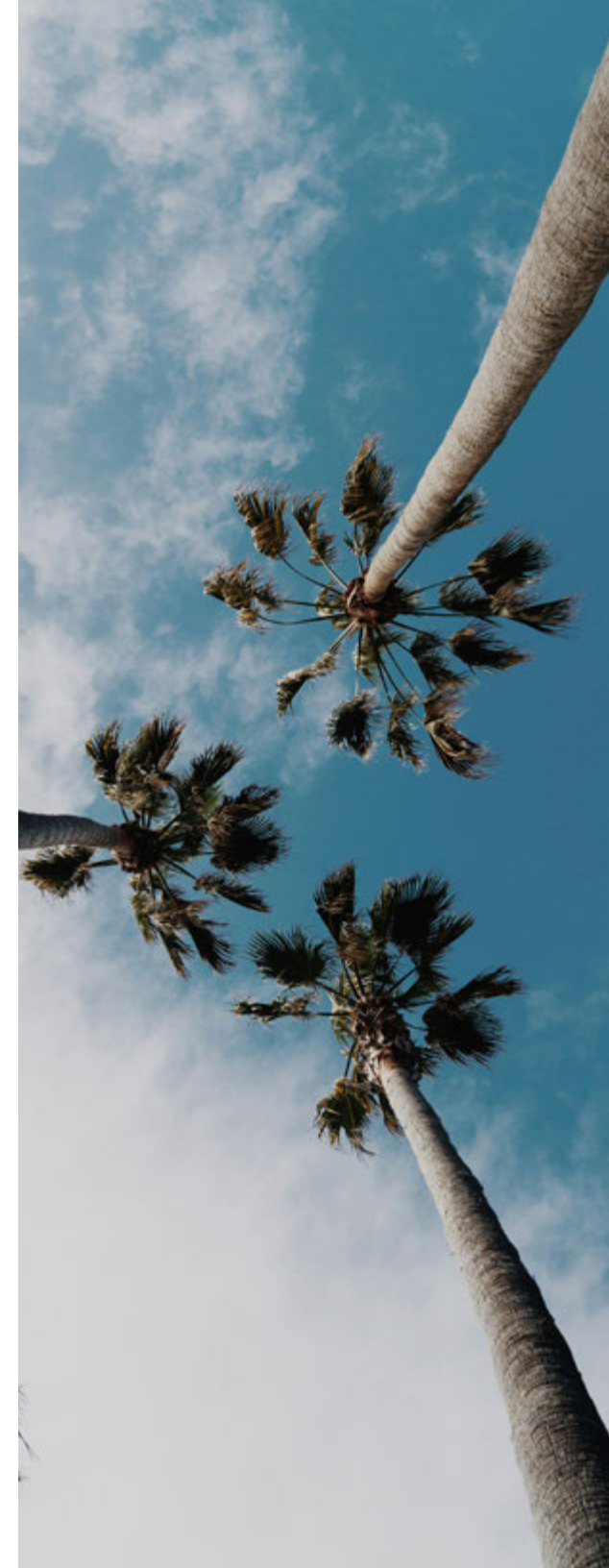

SUGARFISH
BY SUSHI NOZAWA

matú

 **SUR LE VERT**
WINE BAR

MAMÁ X DIOS
MODERN MEXICAN CUISINE

AVRA
BEVERLY HILLS
estiatorio



8820
WILSHIRE BLVD
Beverly Hills



matú

WILSHIRE BLVD

WILSHIRE BLVD

8820
WILSHIRE BLVD
Beverly Hills



JAKE ZACUTO

Managing Director
310 469 9012

jake@zacutogroup.com
DRE #01377441

LEOR BINSHTOCK

Executive Vice President
310.469.9014

leor@zacutogroup.com
DRE #01773798

JOHN LOGAN

Associate Vice President
310.469.9024

john@zacutogroup.com
DRE #02161147

Professionally Managed by:



KING'S ARCH

No warranty, express or implied, is made as to the accuracy of the information contained herein. This information is submitted subject to errors, omissions, change of price, rental or other conditions, withdrawal without notice. All parties who receive this material should not rely on it, but should use it as a starting point of analysis, and should independently confirm the accuracy of the information contained herein through a due diligence review of the books, records, files and documents that constitute reliable sources of the information described herein. Logos and images are for identification purposes only and may be trademarks of their respective companies. All terms provided are approximate. Lessee to verify. 11/2025

ZACUTOGROUP.COM | 310.469.9300

