



Fully Renovated Move-in Ready Office Suites for Lease

**1525 - 1527 - 1529 Sam Rittenberg Boulevard
Charleston, SC 29407**



SCOTT PEEVY, CCIM
843.637.1974
speevy@naicharleston.com

DAVID E. GRUBBS
843.343.9936
degrubbs@naicharleston.com

NAI Charleston

About the Property

NAI Charleston is pleased to present 1525-1527-1529 Sam Rittenberg Blvd, an exclusive office leasing opportunity at The Ritt Business Park. This multi-tenant office park offers modern, well-appointed suites in a variety of sizes to accommodate a wide range of tenant needs. Thoughtfully renovated in 2025, this classic business park now features a distinctive, contemporary finish. Each suite reflects the developer's discerning attention to detail, blending a timeless, distinguished aesthetic and cohesive branding into modern functionality throughout the campus. The Ritt offers a premium, fully equipped conference center—complete with a private reception area and modern kitchenette—that can be reserved by both in-house tenants and outside businesses seeking a professional, upscale meeting space.

What truly sets The Ritt apart is the developer's vision and commitment to quality and detail. Every aspect of the property has been carefully curated to create a tasteful, professional, and welcoming environment that leaves a lasting impression. Ideally located in close proximity to desirable retail and dining options, The Ritt Business Park offers both convenience and prestige in one exceptional setting.

★ Location, Location, Location

Outstanding convenience to West Ashley, downtown Charleston, North Charleston, and the Charleston International Airport

★ Polished & Professional

Modern, well-appointed, and cohesive finishes like glass doors and bright & vibrant color palette create a refined, professional environment for your business

★ Move-In Ready

Offering fully renovated suits ready for immediate occupancy as well as new suites coming available soon



Offering Summary

Addresses:	1525, 1527, 1529 Sam Rittenberg Blvd. Charleston, SC 29407
Business Park:	±28,000 SF Office Park
Year Renovated:	2025
Availability:	Move-in ready
Term:	3 Year Lease Terms
Lease Structure:	Full Service / All-Inclusive
Tenant Expenses:	Data/Internet
Parking:	Ample and convenient on-site shared parking
Zoning:	LB (Limited Business) - City of Charleston

Suite Availability – *The Ritt*

1525 Sam Rittenberg

Suite	Square Feet	Monthly Rent	Availability
104	500 SF	\$1,500	Available
202	1,025 SF	\$3,000	Available
206	850 SF	\$2,350	Available

1527 Sam Rittenberg

Suite	Square Feet	Monthly Rent	Availability
207	250 SF	\$900	Available

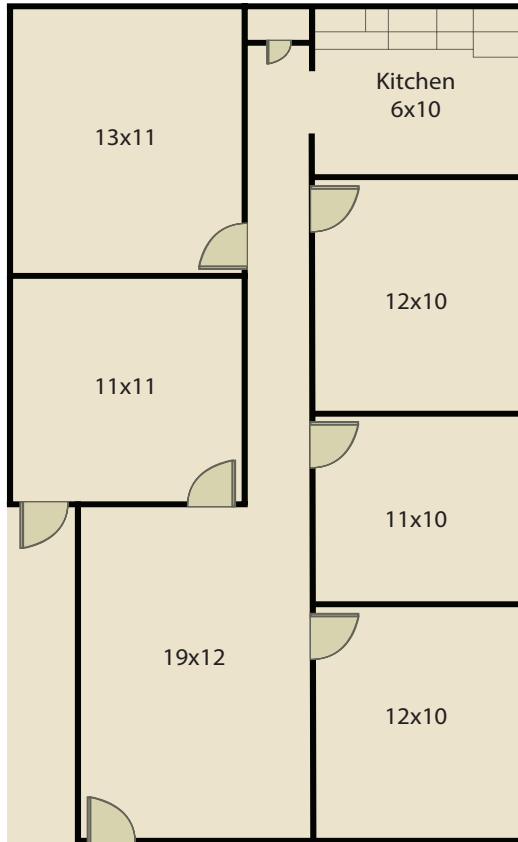
1529 Sam Rittenberg

Suite	Square Feet	Monthly Rent	Availability
1B	550 SF	\$1,650	Available
1D	TBD SF	TBD	TBD
2A	1,525 SF	\$4,195	60-90 Days
2E	775 SF	\$2,150	Available



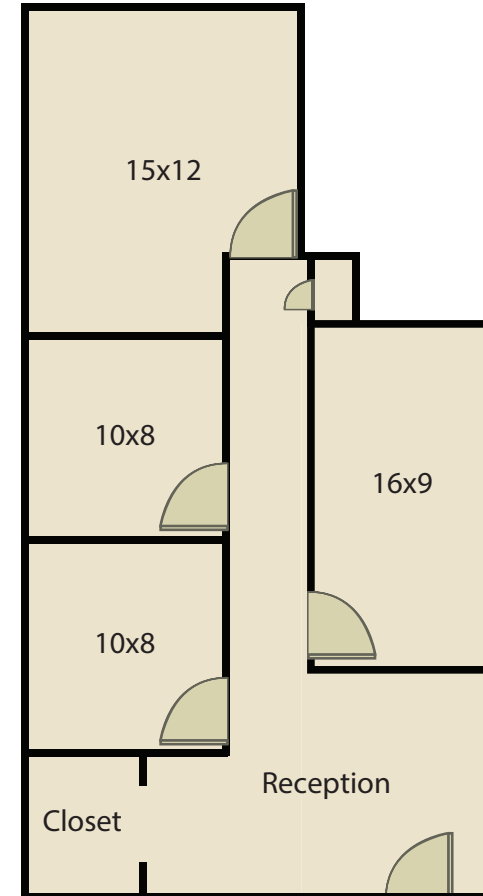
1525 Suite 202

5 Private Offices with
Kitchen & Large Reception Area



1525 Suite 206

4 Private Offices with
Reception Area

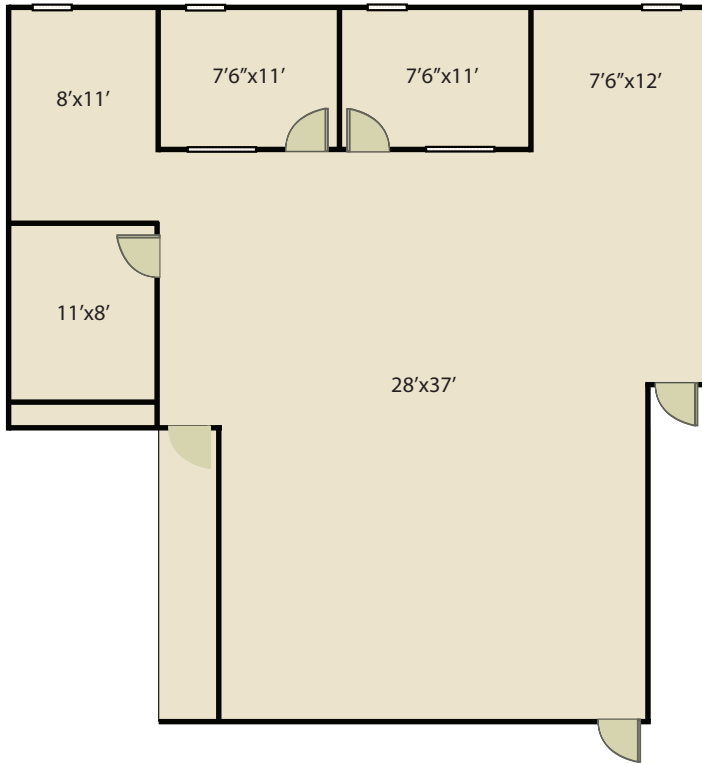


*Not drawn to scale



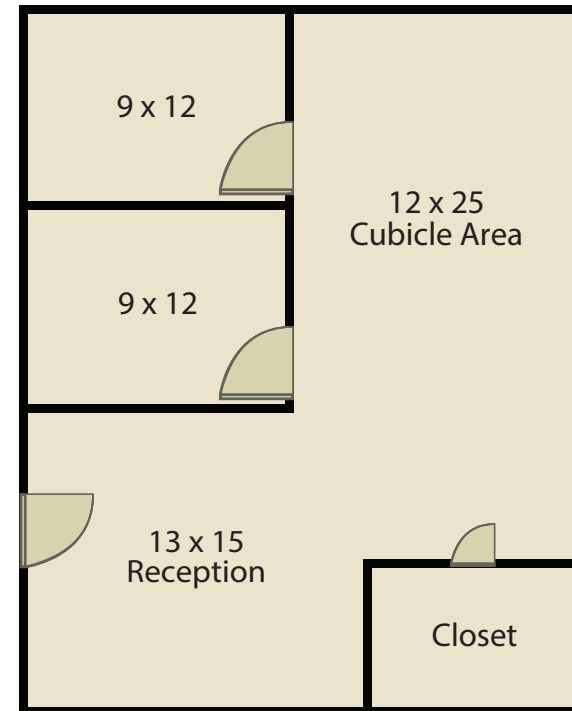
1529 Suite 2A, B, C

Call Center with Kitchenette
& Two Executive Offices



1529 Suite 2E

2 Private Offices with
Reception Area & Call Center



*Not drawn to scale

Area Map



Photos/Amenities



Suite 202



Shared Restroom



Office



Kitchen

Conference Room



Reception

The Ritt Conference Center is a flexible meeting and training space that can be reserved for events such as meetings, workshops, and presentations, offering seating for up to 25 people, customizable layouts, high-speed internet, kitchen access for catering, and a private reception area, and is open to both tenants and the general public.