

# FOR LEASE

## FULL FEE TO TENANT'S BROKER\*\*



**2001**  
**MEYER WAY**  
FAIRFIELD, CA

### ± 2,500 SF - ± 19,000 SF OF QUALITY - FULLY FURNISHED OFFICE SPACE

- **FIRST FLOOR:**
  - ±5,157 SF and ±6,600 SF - Combined for ±11,757 SF
- **SECOND FLOOR:**
  - ±4,000 SF
- Quality office improvements throughout and fully furnished
- Kitchen-Lunch room facilities on each floor
- Convenient location & Access just off I-80 and Highway 12
- Available immediately

\*\*A Full Fee of 5% of the gross rents paid shall be paid to Tenant's Broker by Landlord for term lease of 3 to 5 years. Full Fee Policy valid through December 31, 2024.

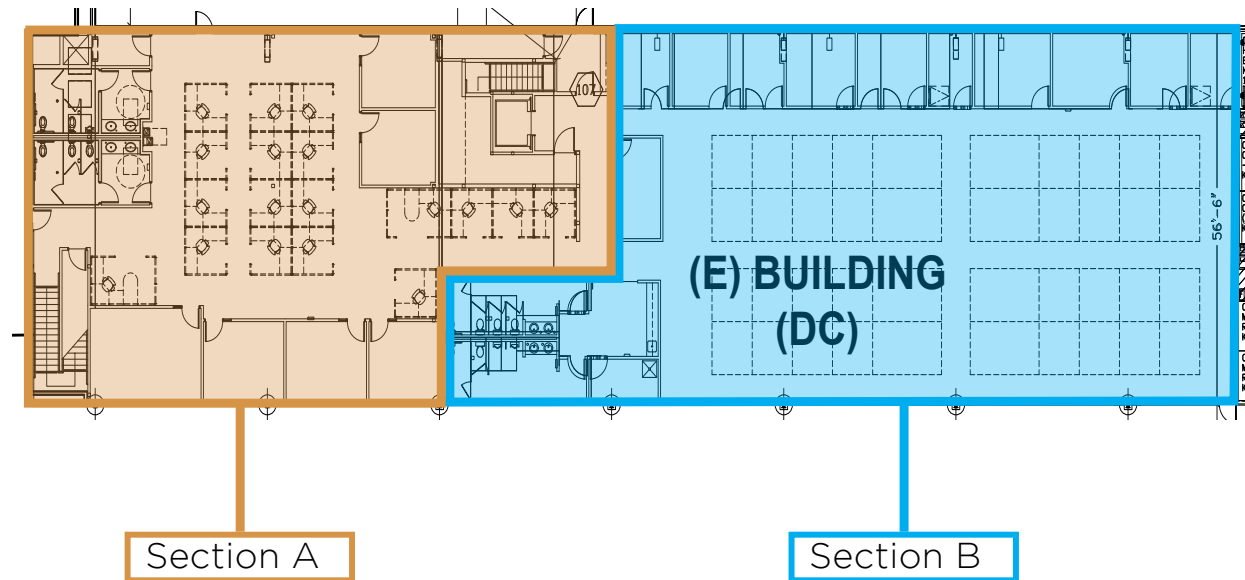
Jones Lang LaSalle Brokerage, Inc. Real Estate License #: 01856260 Although information has been obtained from sources deemed reliable, neither Owner nor JLL makes any guarantees, warranties or representations, express or implied, as to the completeness or accuracy as to the information contained herein. Any projections, opinions, assumptions or estimates used are for example only. There may be differences between projected and actual results, and those differences may be material. The Property may be withdrawn without notice. Neither Owner nor JLL accepts any liability for any loss or damage suffered by any party resulting from reliance on this information. If the recipient of this information has signed a confidentiality agreement regarding this matter, this information is subject to the terms of that agreement. ©2024. Jones Lang LaSalle IP, Inc. All rights reserved.

# FIRST FLOOR PLAN

2001 MEYER WAY

±11,757 SF - AVAILABLE

- Section A: 5,157 SF
  - 6 private offices
  - 18 cubes
- Section B: 6,600 SF
  - 8 private offices
  - 40 cubes



Jones Lang LaSalle Brokerage, Inc.  
415 299 6868 [www.JLL.com](http://www.JLL.com) JLL Lic #: 01856260

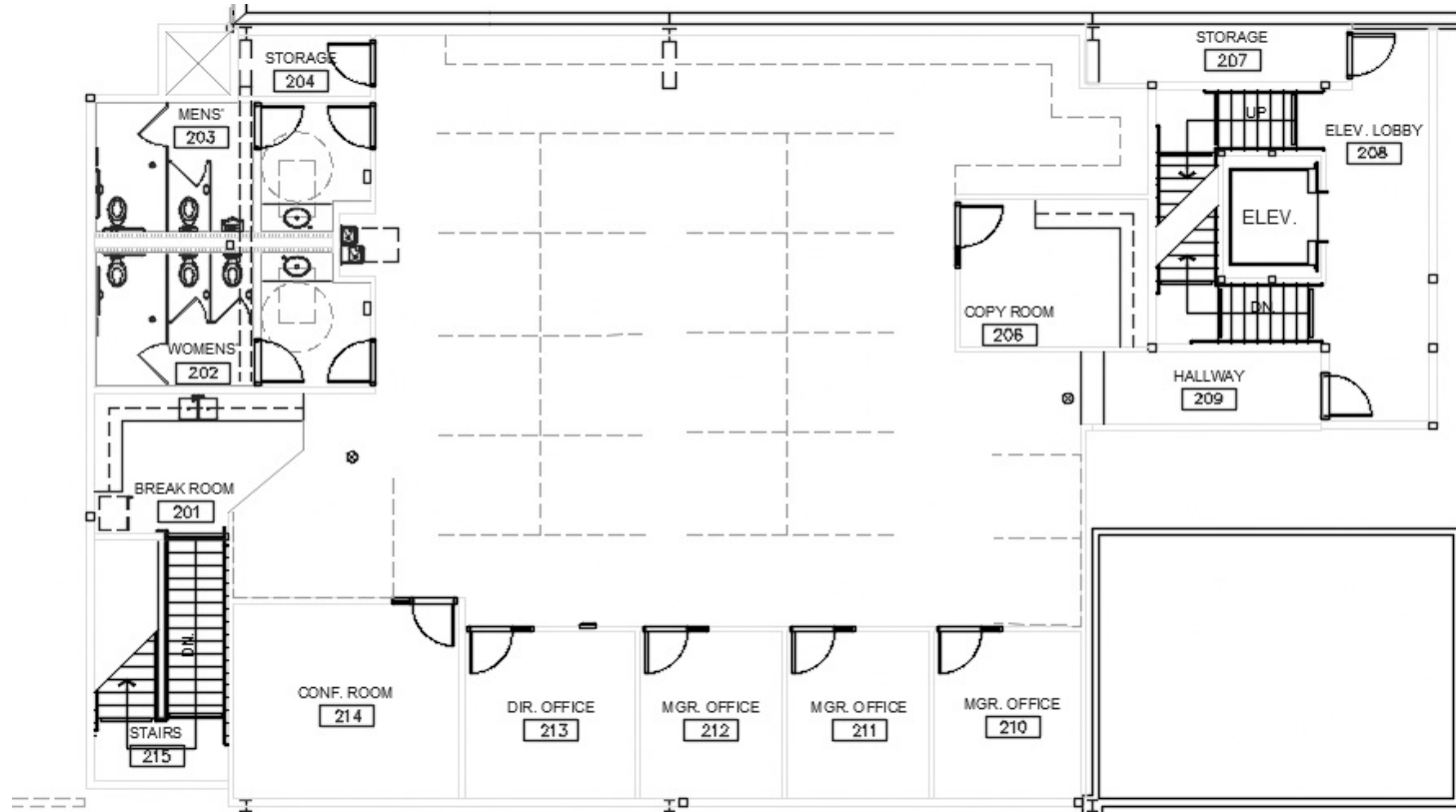
# FOR LEASE

# SECOND FLOOR PLAN

2001 MEYER WAY

±4,000 SF - AVAILABLE

- 4,000 SF
  - 6 private offices
  - 19 cubes



Jones Lang LaSalle Brokerage, Inc.  
415 299 6868 [www.JLL.com](http://www.JLL.com) JLL Lic #: 01856260

**FOR LEASE**

# INTERIOR PHOTOS

2001 MEYER WAY



Jones Lang LaSalle Brokerage, Inc.  
415 299 6868 [www.JLL.com](http://www.JLL.com) JLL Lic #: 01856260

# LOCATION

## 2001 MEYER WAY

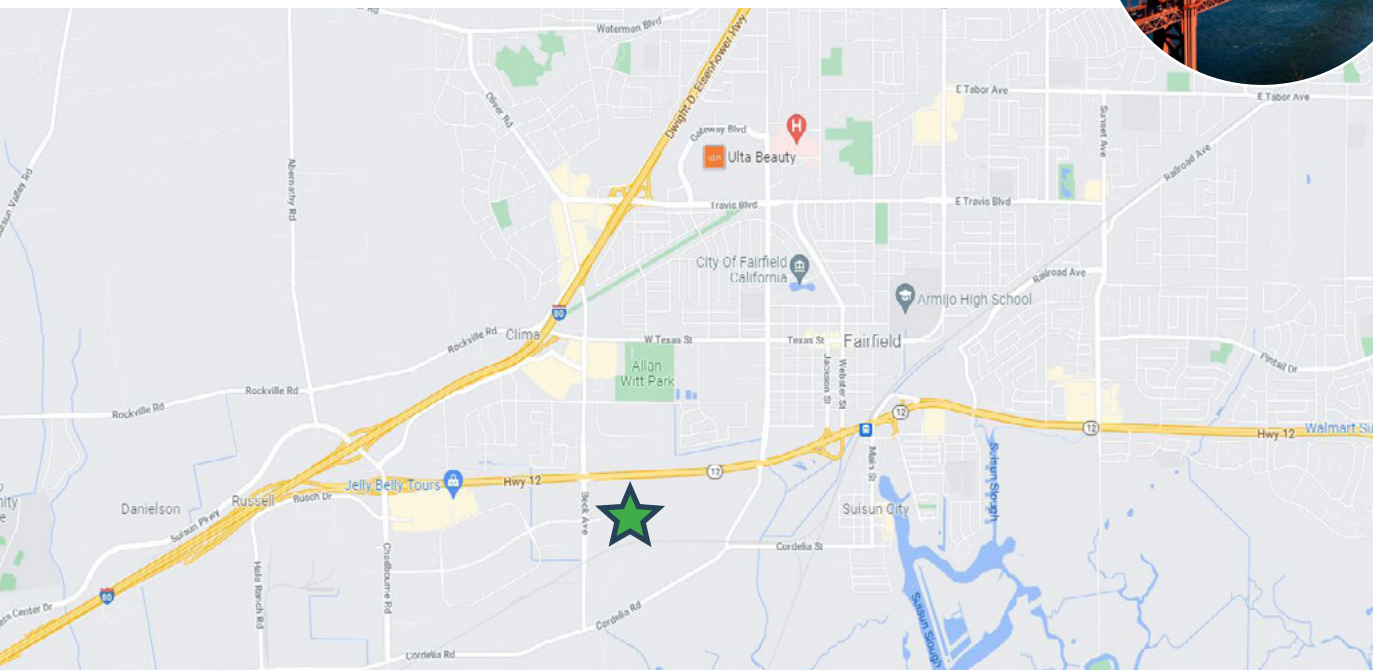
2001 MEYER WAY is strategically located less than one mile from the Highway 12 on-ramp at Beck Ave. in Fairfield. The property offers tenants outstanding retail amenities within a short driving distance from the site, including shopping, restaurants, coffee shops and other retail amenities. Fairfield is also the County seat to Solano County, which includes some of the most affordable housing in the nine Bay Area county region, an attractive labor pool, and over 1.86 million residents located within a 30 miles radius of the site. Just a short drive from the more urban centers of San Francisco and Oakland, Fairfield is well known for its sense of community and an excellent quality of life it offers its residents.



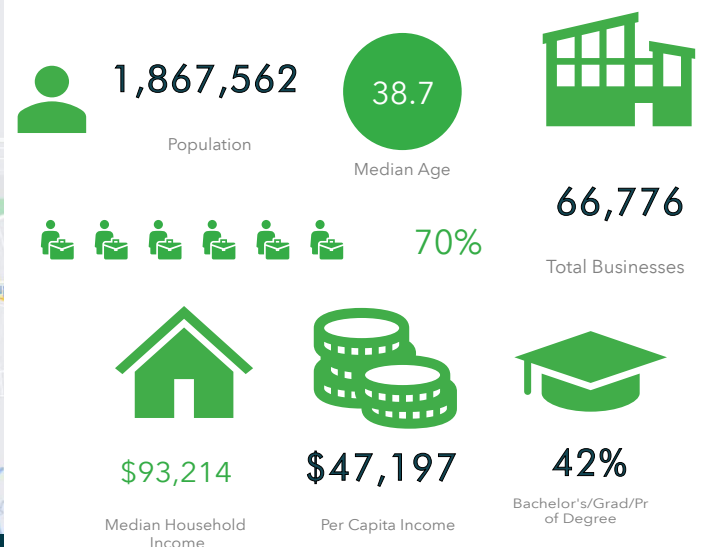
CONVENIENT  
BAY AREA  
ACCESSIBILITY



**SUPERIOR QUALITY OF LIFE**  
FAIRFIELD, CA



### SOLANO COUNTY DEMOGRAPHIC SNAPSHOT



**STRATEGIC LOCATION**

**Solano Town Center**

DICK'S SPORTING GOODS  
Jack in the Box  
TRADER JOE'S  
The Habit BURGER GRILL  
PETSMART  
STARBUCKS COFFEE  
TAQUERIA EL MEZCAL



**2001  
MEYER WAY  
FAIRFIELD, CA**

FOR MORE INFORMATION, PLEASE CONTACT:

Jones Lang LaSalle Brokerage, Inc.  
415 299 6868 www.JLL.com JLL Lic #: 01856260

GLEN DOWLING  
+1 415 299 6868  
glen.dowling@jll.com  
RE #: 00890450

CHRIS NEEB  
+1 707 495 7777  
chris.neeb@jll.com  
RE #: 01856260

MATT BRACCO  
+1 925 200 3537  
matt.bracco@jll.com  
RE #: 01185434

