



# INDUSTRIAL PROPERTY FOR LEASE 5,100+/- SF ON 1.22+/- ACRES

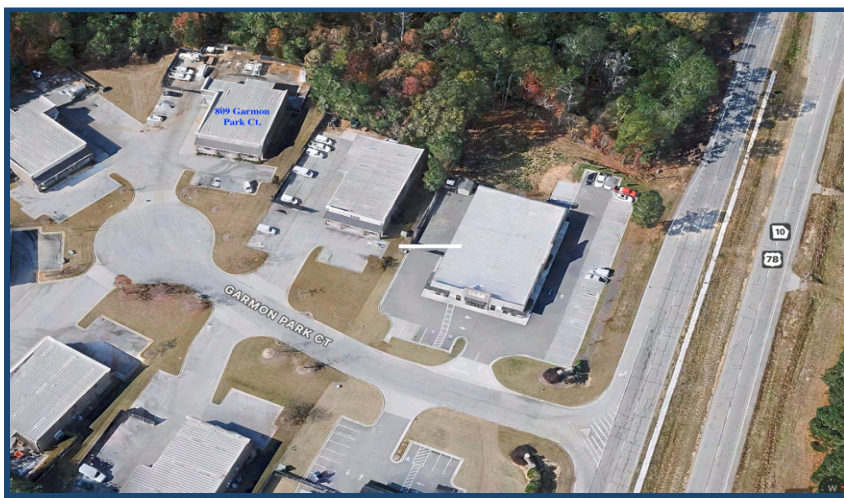


**809 Garmon Park Ct., Loganville, GA. 30052**

## **PROPERTY SUMMARY**

**Total SF:** 5,100+/-  
**Zoning:** B2 (Walton County)  
**Year Built:** 2005  
**Acreage:** 1.22+/-

- 1,500+/- SF Very Nice Office Buildout
- 3,600+/- SF Warehouse
- 13' - 15' Clear Ceiling Height (Clear Span)
- 1 Grade-Level Doors (12' X 12')
- 1 Dock Position (8' X 8')
- Fenced Outdoor Storage Yard
- 3 Phase Power



For More Information Contact:  
**Jeremy Dupree, SIOR**

770.633.5312

[jdupree@COREcommercialinc.com](mailto:jdupree@COREcommercialinc.com)

[www.COREcommercialinc.com](http://www.COREcommercialinc.com)

Every effort has been made to provide accurate information, but no liability is assumed for omissions and errors.





# INDUSTRIAL PROPERTY

## FOR LEASE

### 5,100+/- SF ON 1.22+/- ACRES



For More Information Contact:  
**Jeremy Dupree, SIOR**  
770.633.5312  
[jdupree@COREcommercialinc.com](mailto:jdupree@COREcommercialinc.com)

[www.COREcommercialinc.com](http://www.COREcommercialinc.com)

Every effort has been made to provide accurate information, but no liability is assumed for omissions and errors.