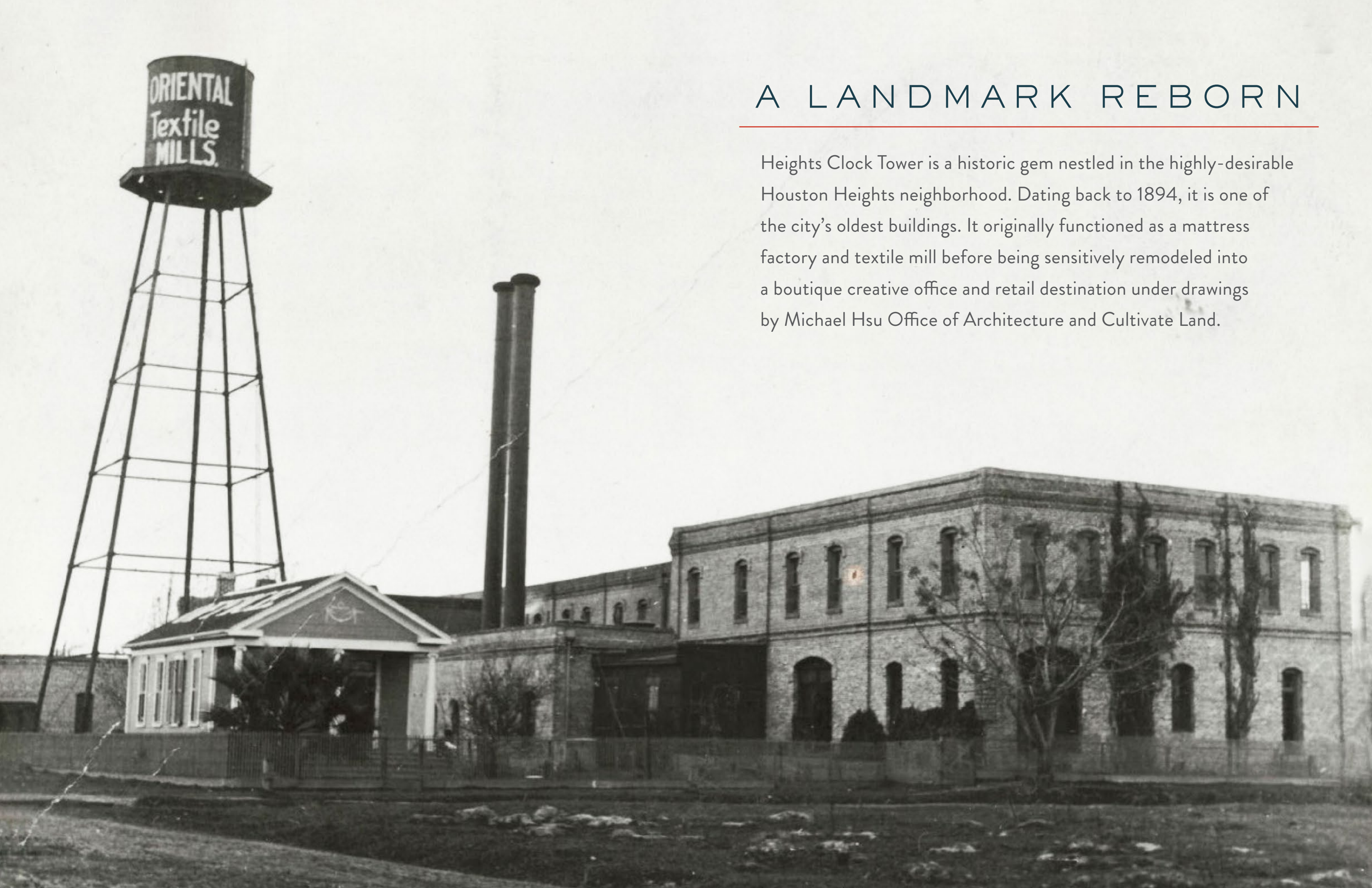


HEIGHTS CLOCKTOWER

611 W. 22nd Street Houston, TX 77008





A LANDMARK REBORN

Heights Clock Tower is a historic gem nestled in the highly-desirable Houston Heights neighborhood. Dating back to 1894, it is one of the city's oldest buildings. It originally functioned as a mattress factory and textile mill before being sensitively remodeled into a boutique creative office and retail destination under drawings by Michael Hsu Office of Architecture and Cultivate Land.

RENOVATIONS COMPLETE



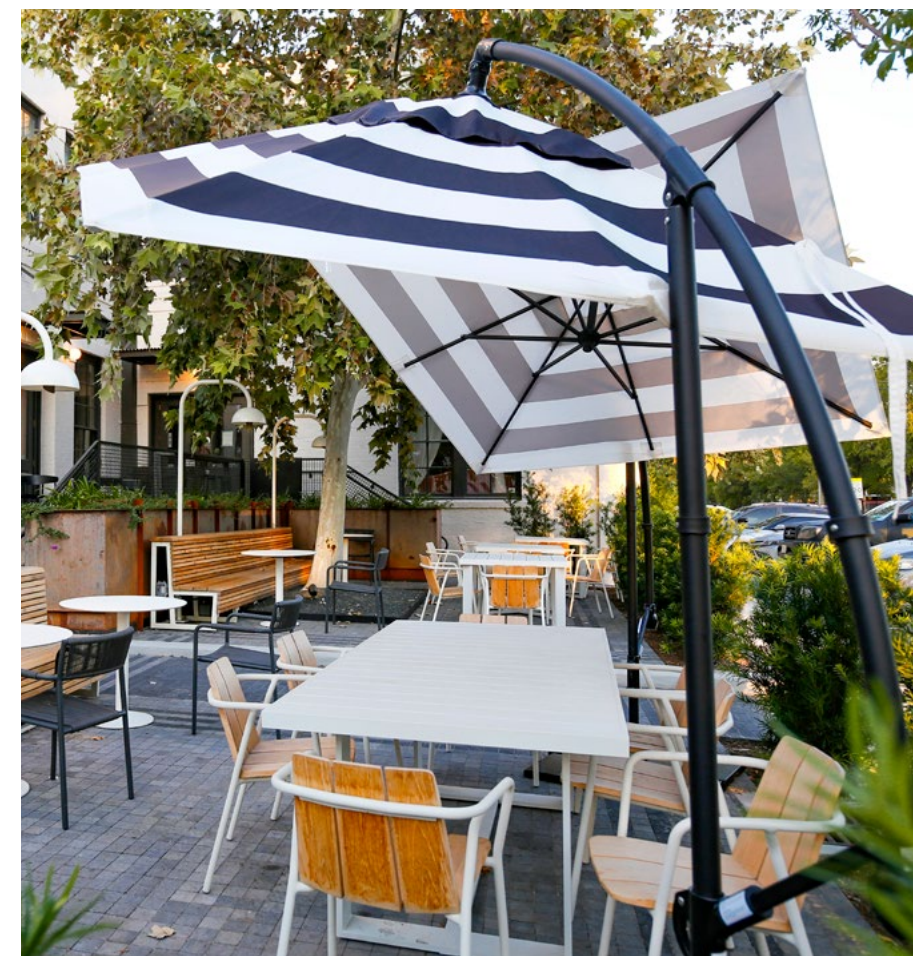
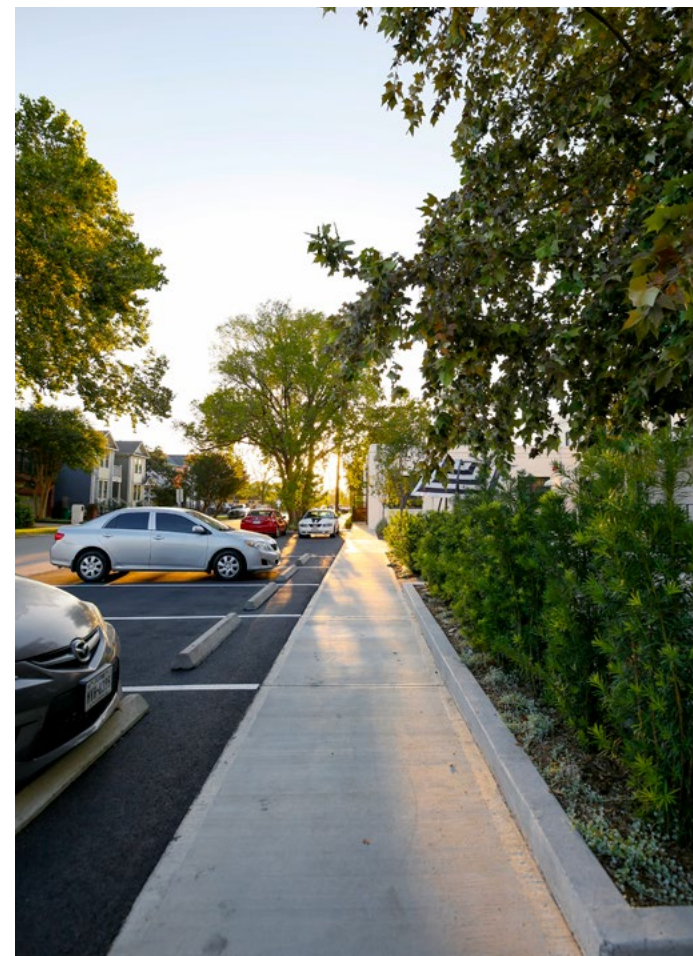
Extensive landscape renovation
breathe new life into both
communal and private patios



Wifi accessible
throughout the project.



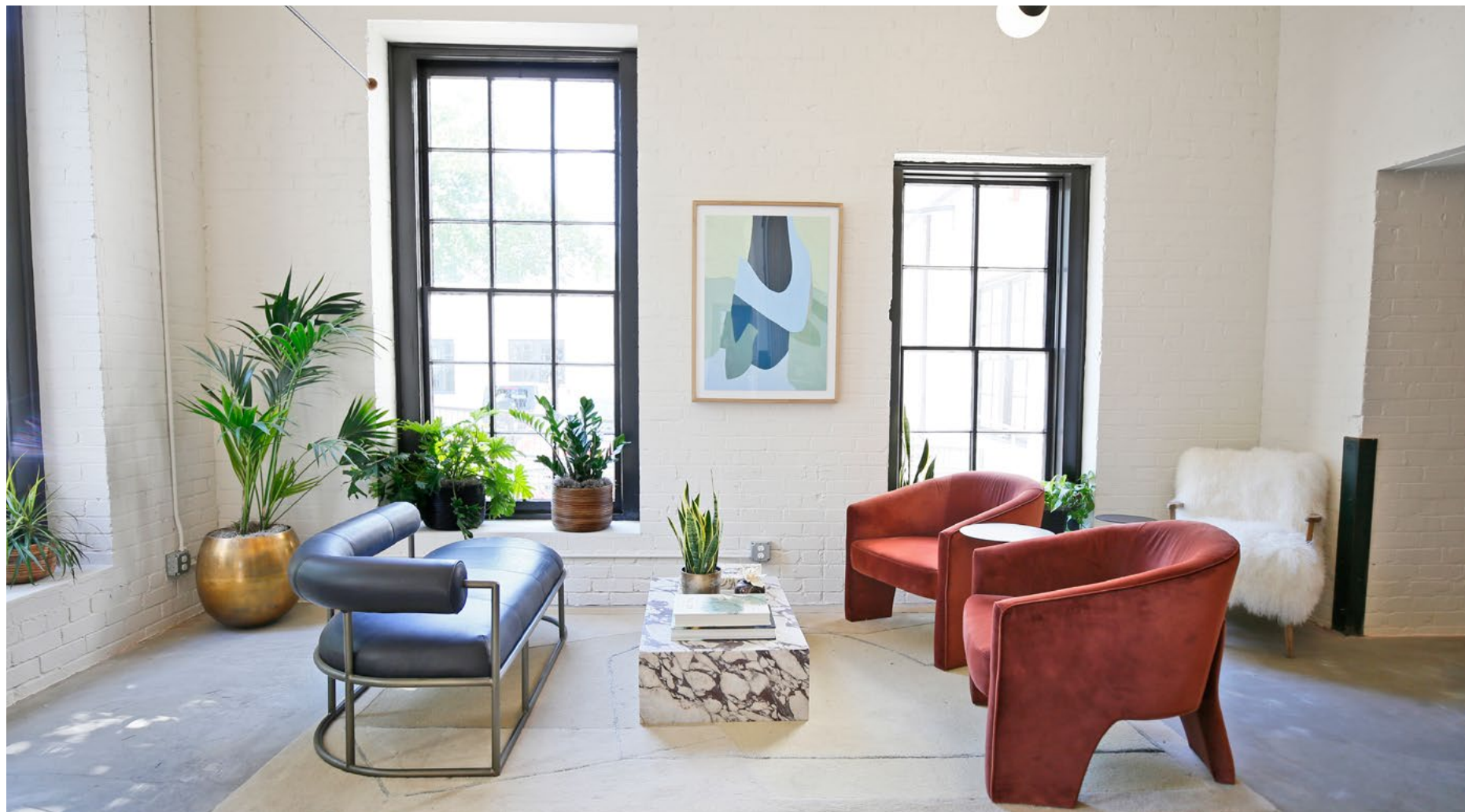
Upgraded parking and wayfinding
provide ease of navigation
for tenant guests.



INSPIRED LOBBIES

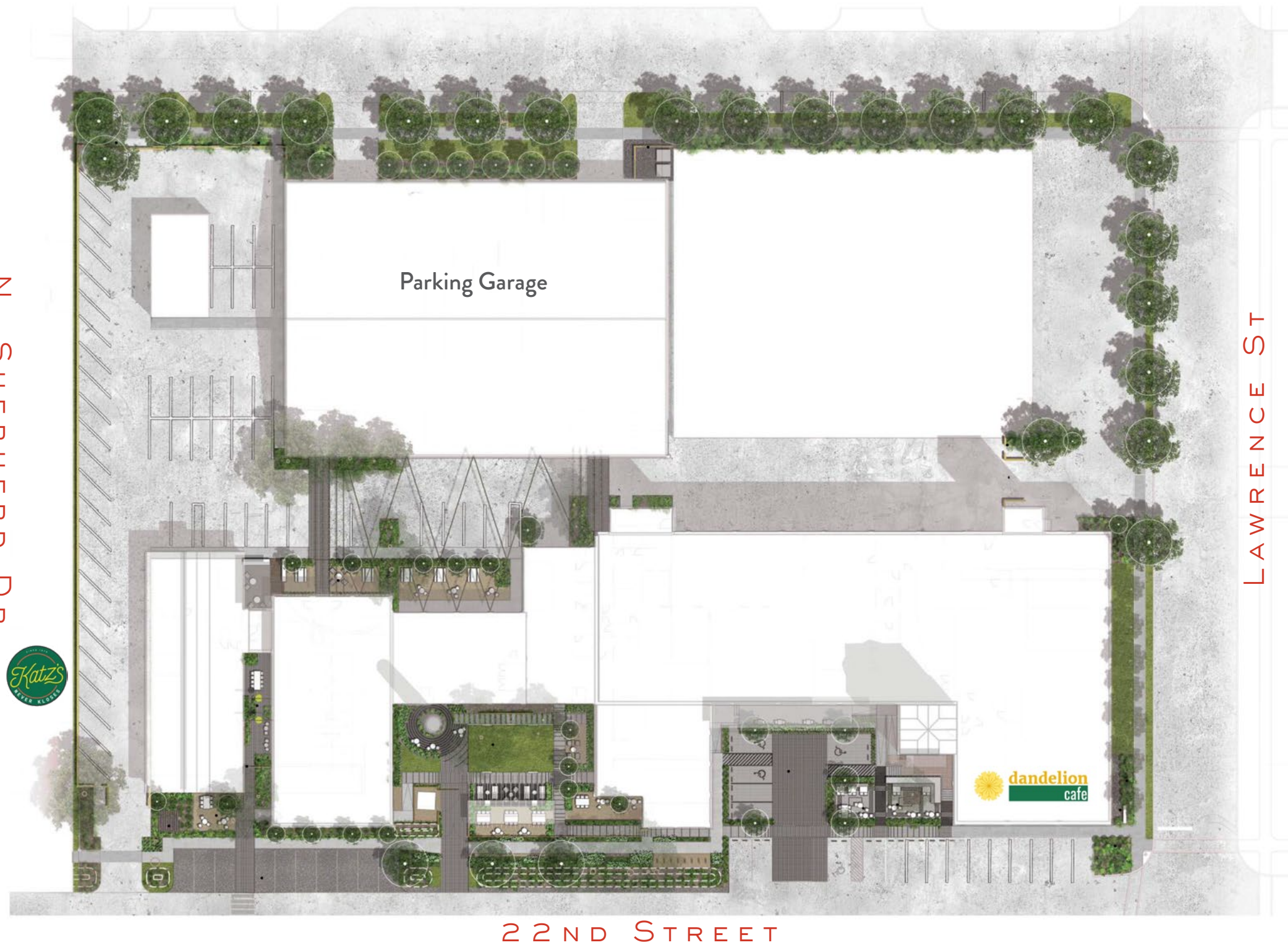


We channeled our favorite boutique hotel lobbies when redesigning the art-forward lobbies at the Clock Tower. Our hospitality-influenced lobbies feature multiple seating vignettes and a library conference area. The full sensory experience begins with great music on our new sound system and layers in custom lighting, museum-caliber art, interior planting and plush seating.



AMENITIES

- On-site café
- Private courtyards
- Bluetooth Access Control
- Original factory ceilings and floors
- New alleyway landscaping completed
- Numerous walkable amenities



LOCATION



MAP LEGEND

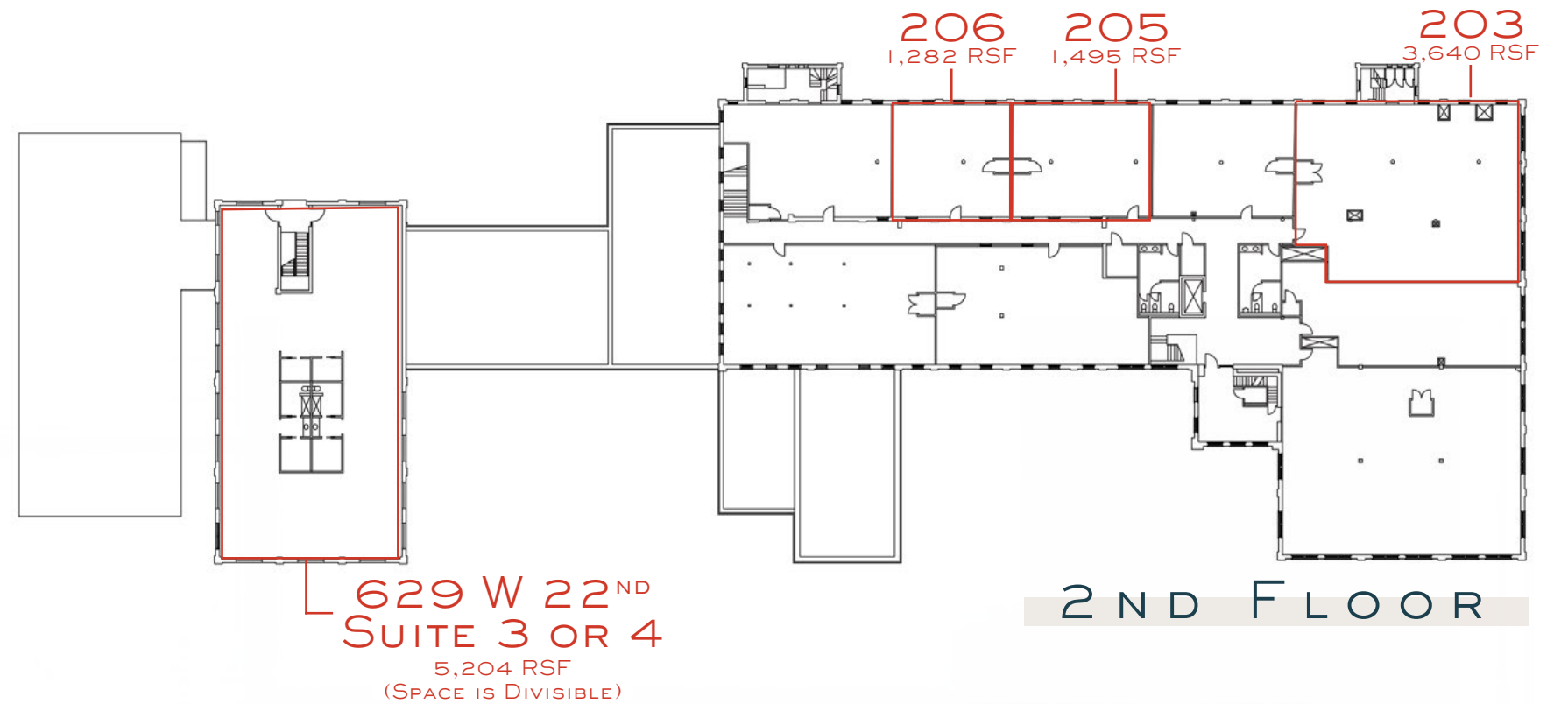
- | | |
|---------------------------------|-------------------------------|
| 1. SIMPLY COFFEE | 16. RIDE INDOOR CYCLING |
| 2. ALMA MEXICAN FAJITAS & RITAS | 17. COMMON BOND CAFE & BAKERY |
| 3. VELVET TACO | 18. JINYA |
| 4. THE WAFFLE BUS | 19. HOPDODDY BURGER BAR |
| 5. LA LUCHA | 20. THAI SPICE |
| 6. GREEN EARTH JUICERY & CAFE | 21. JENI'S SPLENDID ICE CREAM |
| 7. MICO'S HOT CHICKEN | 22. TORCHY'S |
| 8. H-E-B | 23. SHANDY'S CAFE |
| 9. BUFF CITY SOAP | 24. WELLS FARGO |
| 10. KATZ'S DELI & BAR | 25. KROGER |
| 11. THE TACO STAND | 26. THE RICE BOX |
| 12. THE BURGER JOINT | 27. CAVA |
| 13. KA SUSHI | 28. WALGREENS |
| 14. SQUABLE | 29. AGNES & SHERMAN |
| 15. HOLDEN HEIGHTS | 30. BOOMTOWN COFFEE |

IN THE NEIGHBORHOOD



SITE PLAN

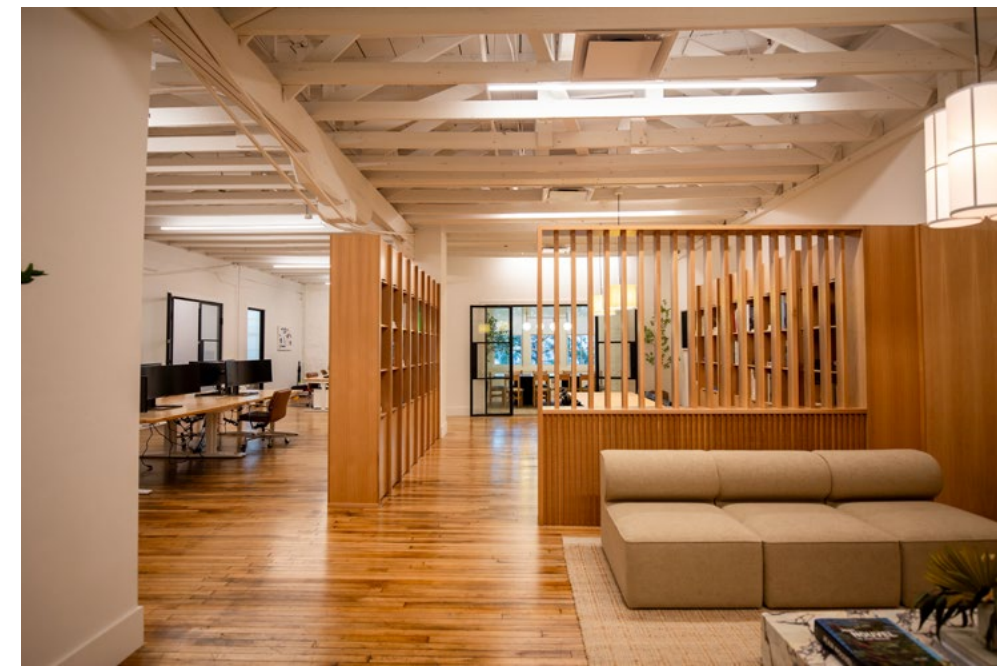
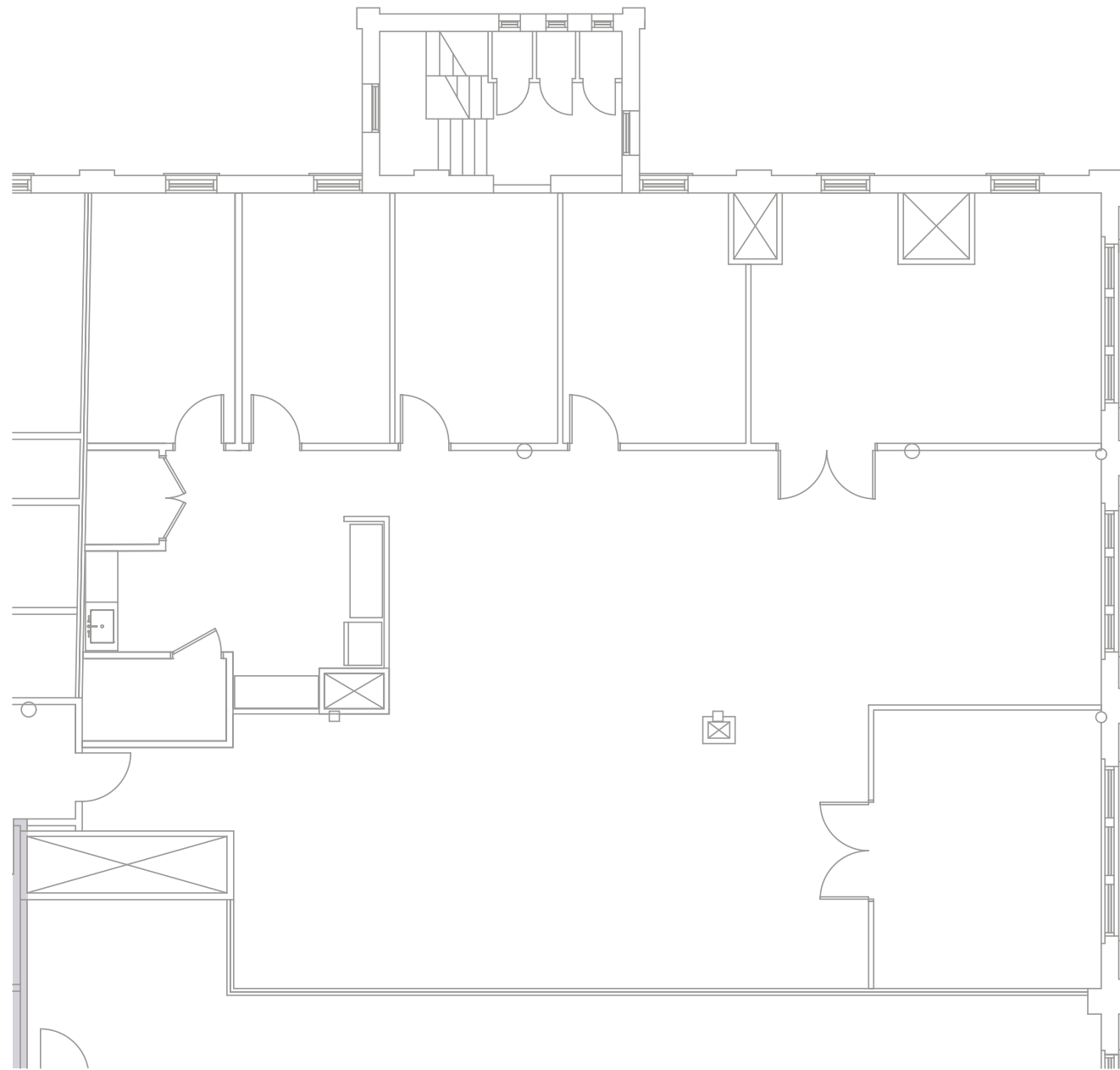
- 1,282 SF - 5,204 SF available
- Open plans with private office, storage, and kitchenette
- Original hardwood floors and historic features throughout
- Generous natural light



SUITE 203

2nd Floor - 3,640 SF

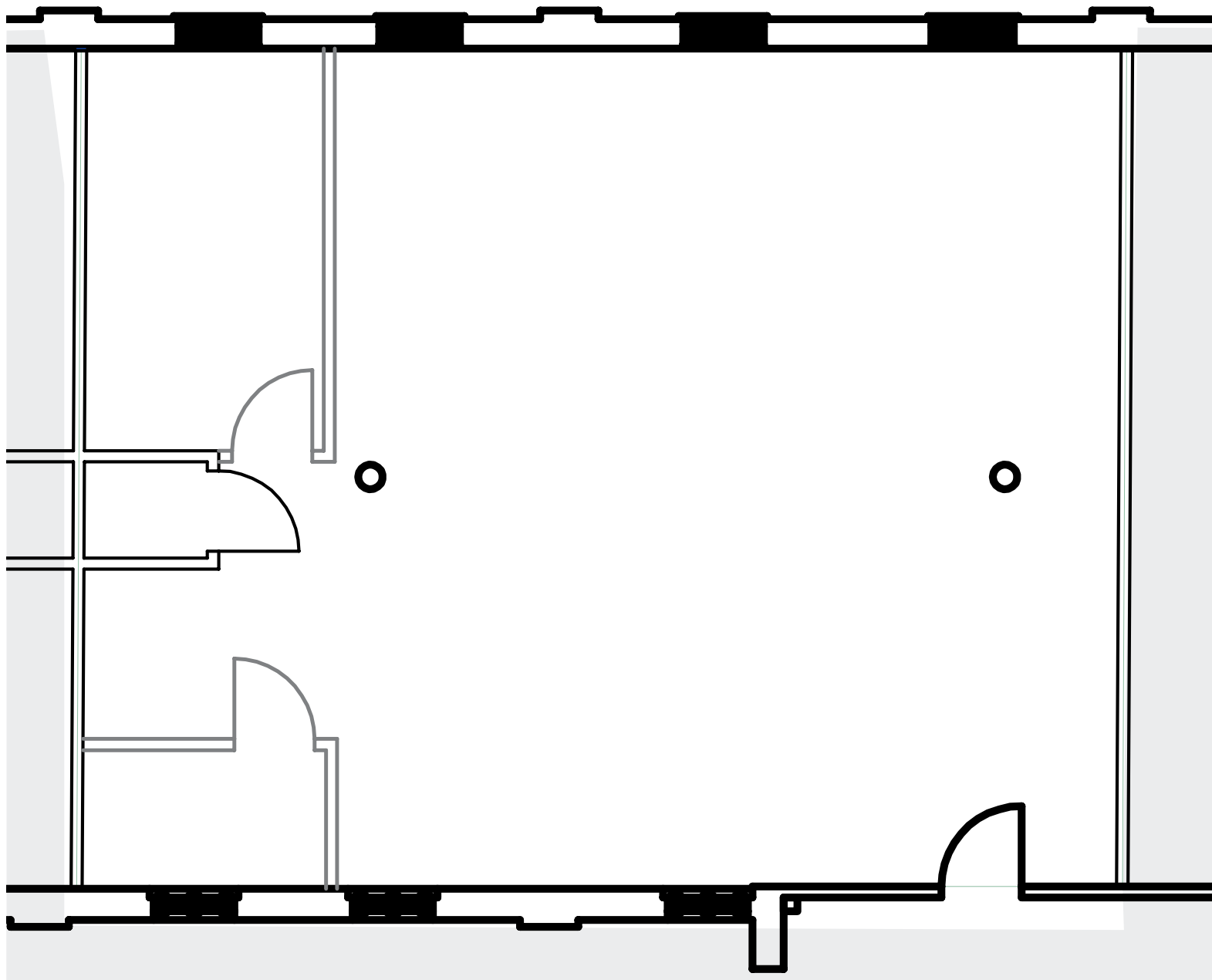
- Open floor plan layout
- Tall, exposed ceilings
- Kitchenette
- Original wood floors restored



SUITE 205

2nd Floor - 1,495 RSF

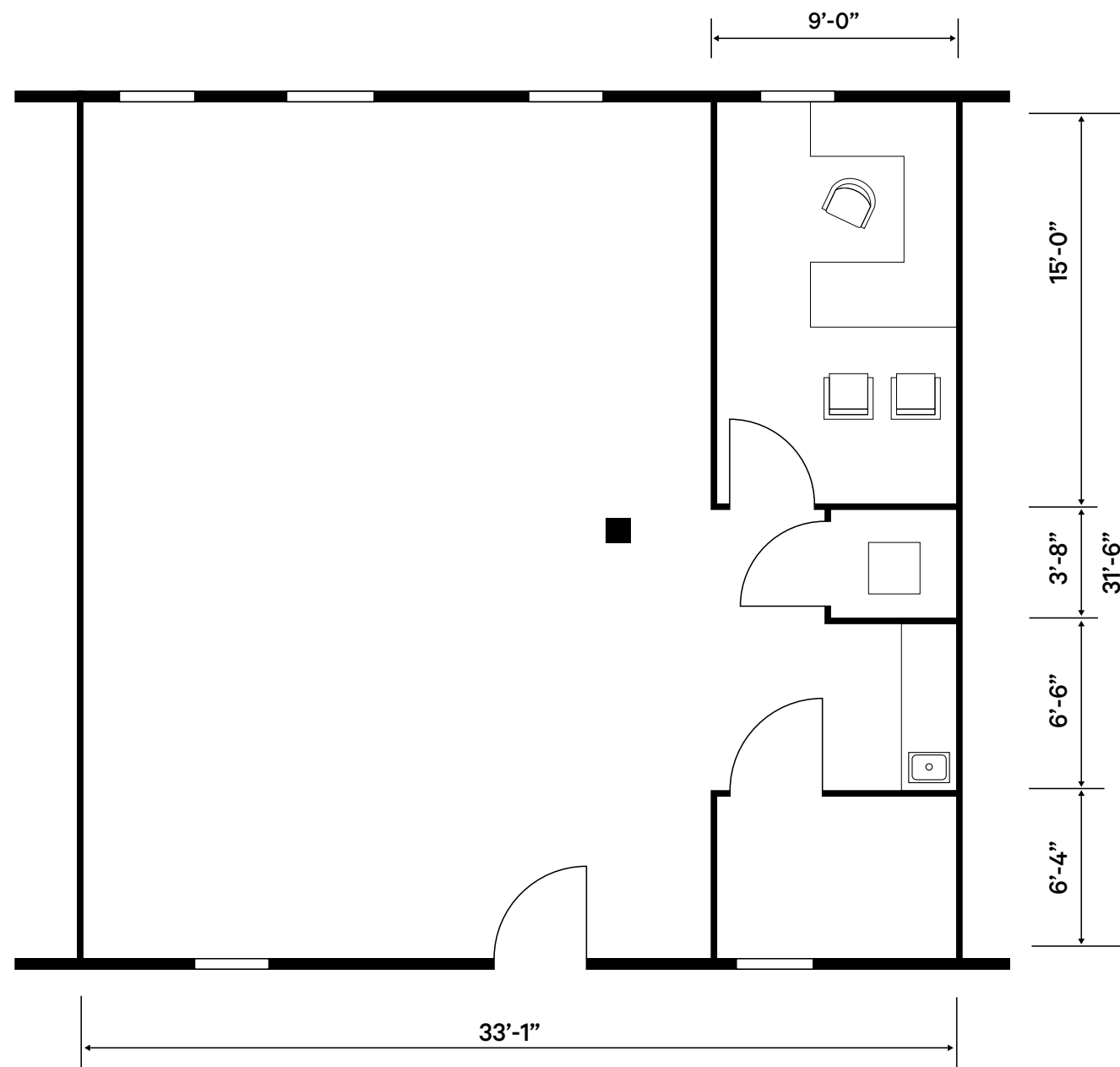
- Open floor plan layout
- Kitchenette
- Closet
- Closed conference or office



SUITE 206

2nd Floor - 1,282 SF

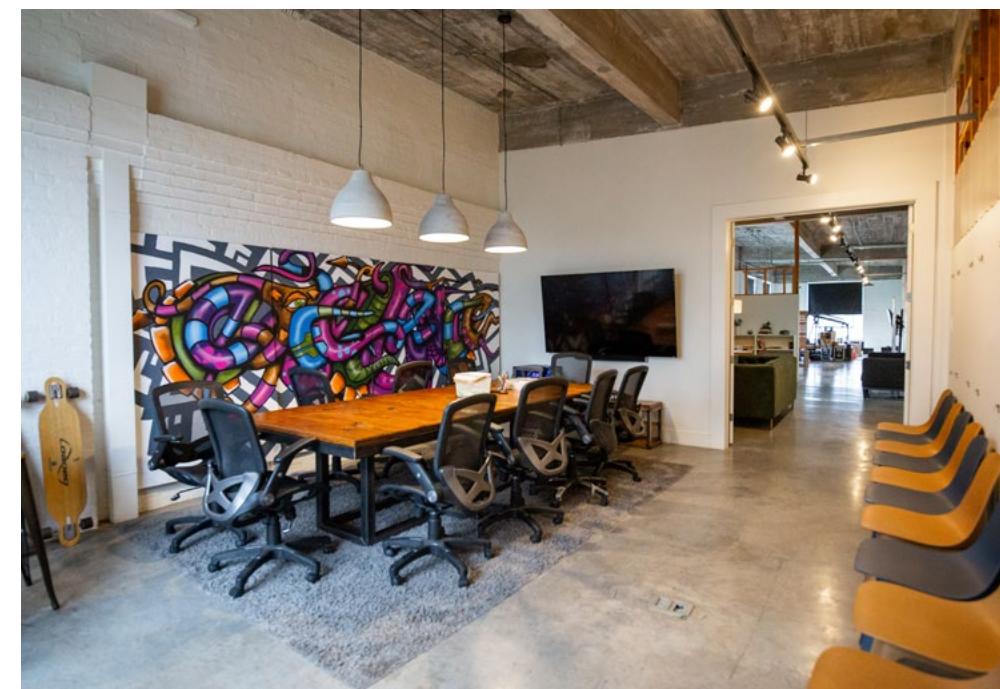
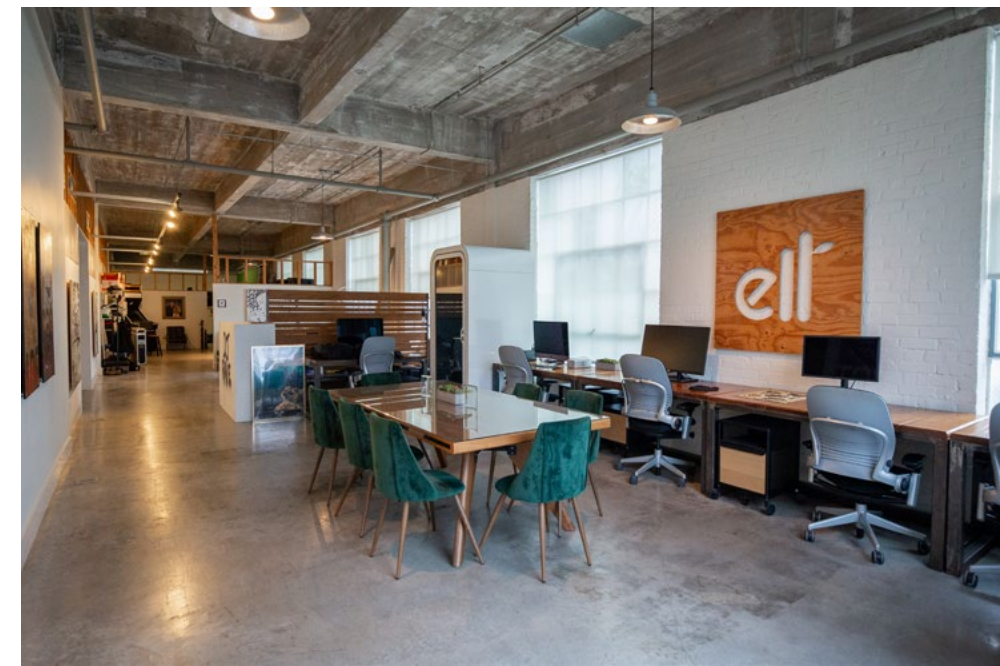
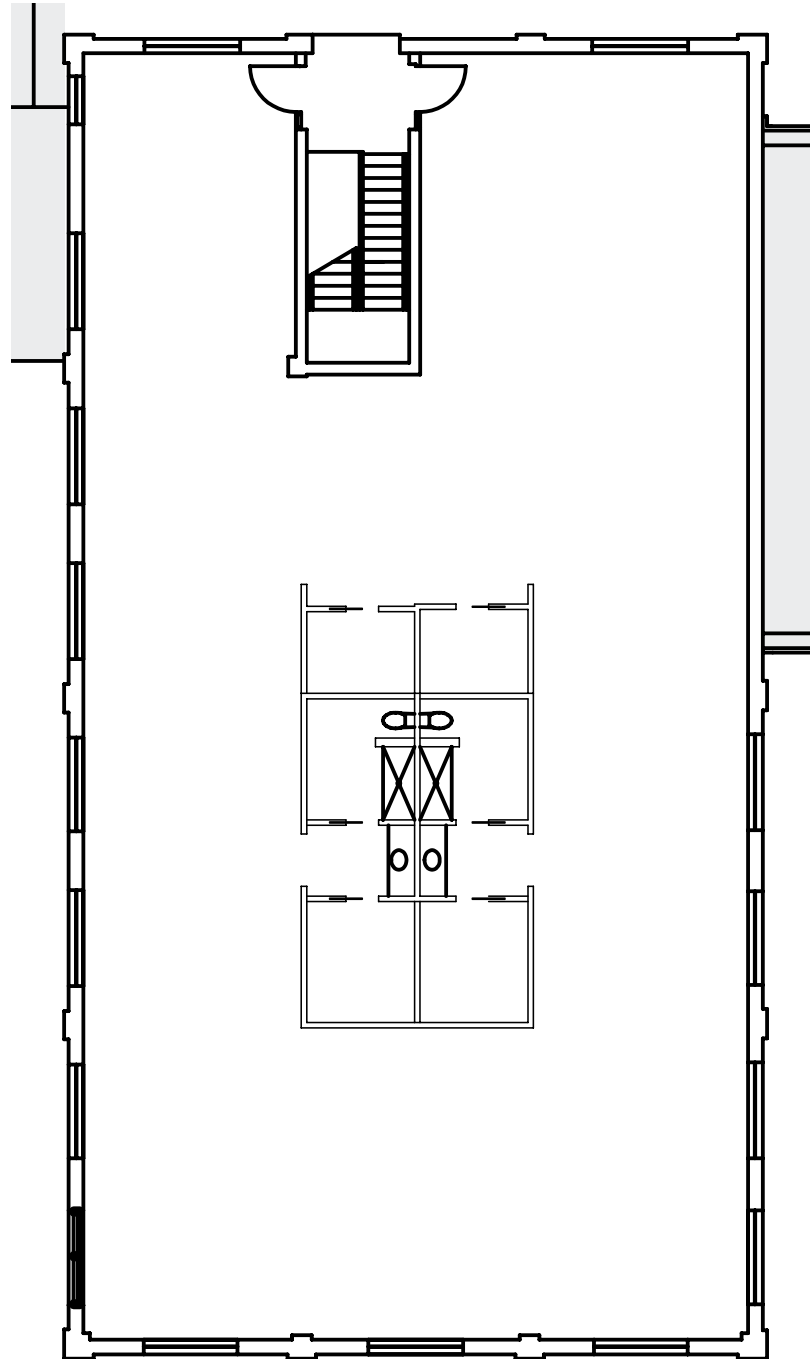
- Open floor plan layout
- Tall, exposed ceilings
- Kitchenette
- Original wood floors restored



629 W 22ND, SUITE 3 OR 4

2nd Floor - 5,204 SF (Space is Divisible)

- Mostly open floor plan layout
- Tall, exposed ceilings
- Kitchen
- Two private restrooms
- Finished concrete floors



HEIGHTSCLOCKTOWER.COM

Jenny Sealy
Vice President
T 713 577 1730
jenny.sealy@cbre.com

Nina Seyyedini, J.D.
First Vice President
T 713 577 1598
nina.seyyedin@cbre.com

