

FOR SALE / LEASE

STOREY KENWORTHY

1333 OHIO ST DES MOINES, IA 50314



PROPERTY DESCRIPTION

Approximately 14,000 sf of finished office and showroom area, with +/- 34,000 sf of warehouse / distribution space, situated on 2.77 acres. Property has 7 docks, 3 grade level drive in doors, 85 parking spaces. Tilt up construction with central HVAC in the office and showroom areas, and suspended gas heat in the warehouse.

PROPERTY HIGHLIGHTS:

- AVAILABLE FOR SALE OR LEASE
- 7 DOCKS / 3 GRADE LEVEL DRIVE IN DOORS
- EXTENSIVE AND WELL APPOINTED OFFICE AND SHOWROOM
- EASY ACCESS TO INTERSTATE 235

OFFERING SUMMARY

Sale Price:	Subject To Offer
Lease Rate:	Negotiable
Number of Units:	1
Available SF:	48,552 SF
Lot Size:	120,640 SF
Building Size:	48,552 SF

DEMOGRAPHICS	0.5 MILES	1 MILE	1.5 MILES
Total Households	801	4,719	13,435



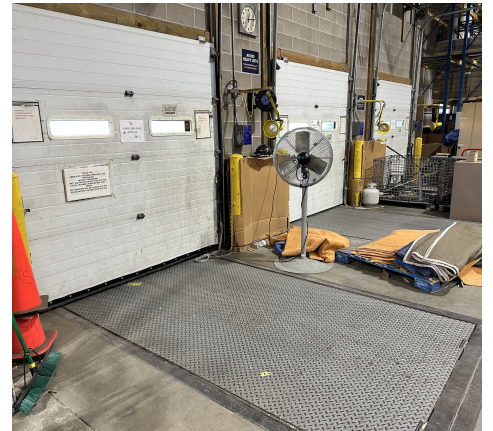
CRAIG CROSSLAND
515.975.5191
craig@fergusoncre.com

DARIN FERGUSON
515.778.6683
darin@fergusoncre.com

FOR SALE / LEASE

STOREY KENWORTHY

1333 OHIO ST DES MOINES, IA 50314



CRAIG CROSSLAND
515.975.5191
craig@fergusoncre.com

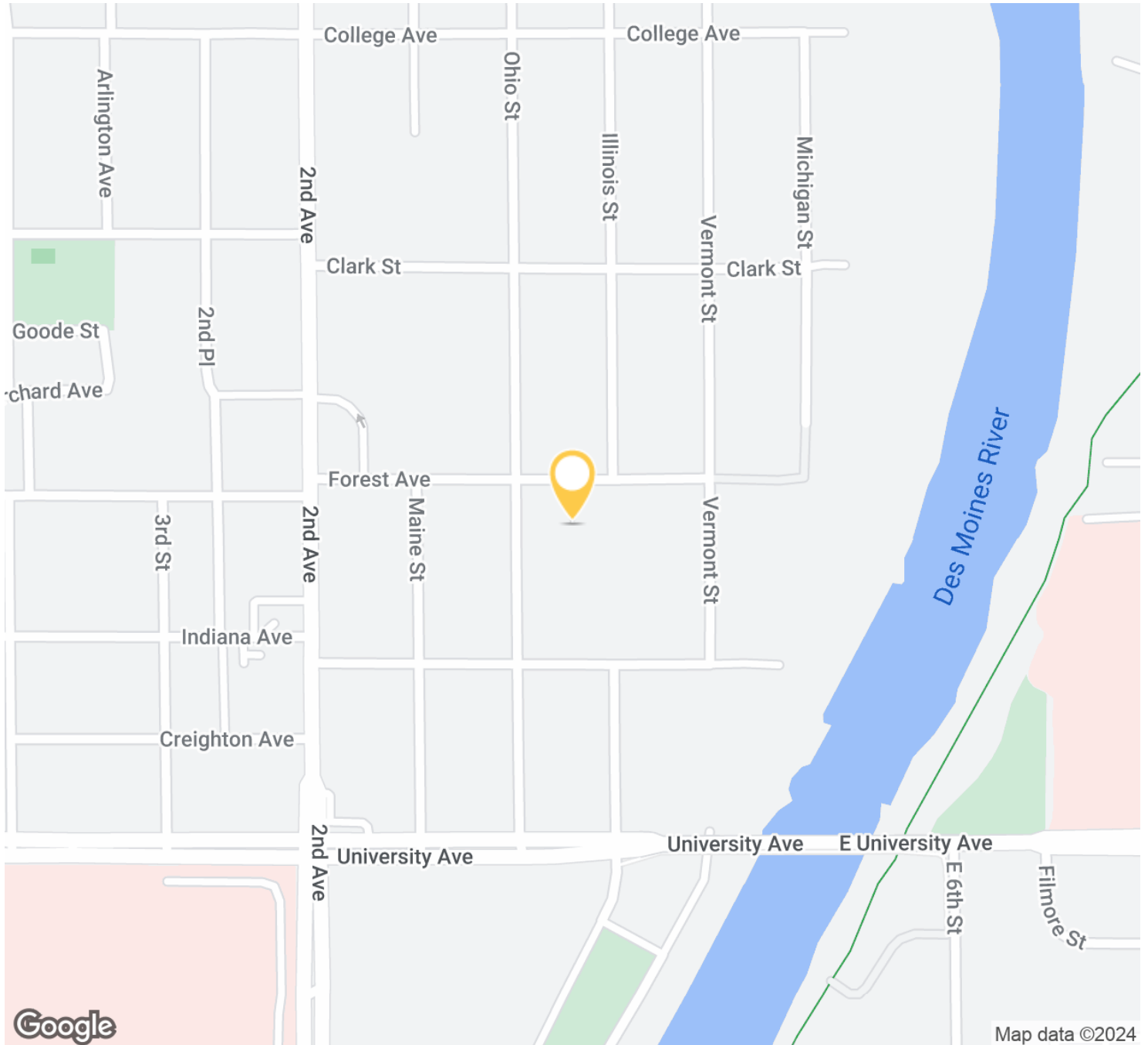
DARIN FERGUSON
515.778.6683
darin@fergusoncre.com

FOR SALE / LEASE

STOREY KENWORTHY

1333 OHIO ST DES MOINES, IA 50314

1333



CRAIG CROSSLAND

515.975.5191

craig@fergusoncres.com

DARIN FERGUSON

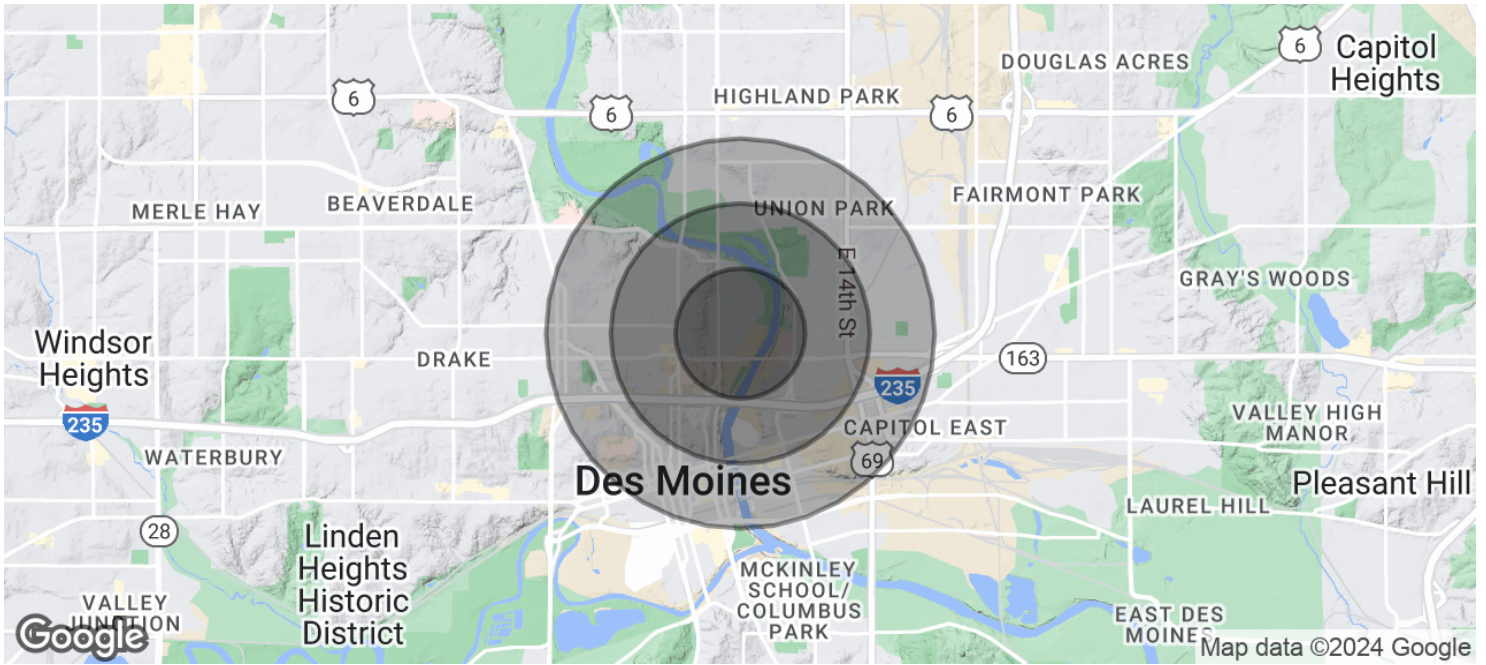
515.778.6683

darin@fergusoncres.com

FOR SALE / LEASE

STOREY KENWORTHY

1333 OHIO ST DES MOINES, IA 50314



POPULATION	0.5 MILES	1 MILE	1.5 MILES
Total Population	2,152	11,678	29,821
Average Age	34.3	31.6	31.2
Average Age (Male)	30.5	29.2	30.1
Average Age (Female)	41.0	34.9	33.0

HOUSEHOLDS & INCOME	0.5 MILES	1 MILE	1.5 MILES
Total Households	801	4,719	13,435
# of Persons per HH	2.7	2.5	2.2
Average HH Income	\$40,543	\$43,512	\$49,384



CRAIG CROSSLAND
515.975.5191
craig@fergusoncres.com

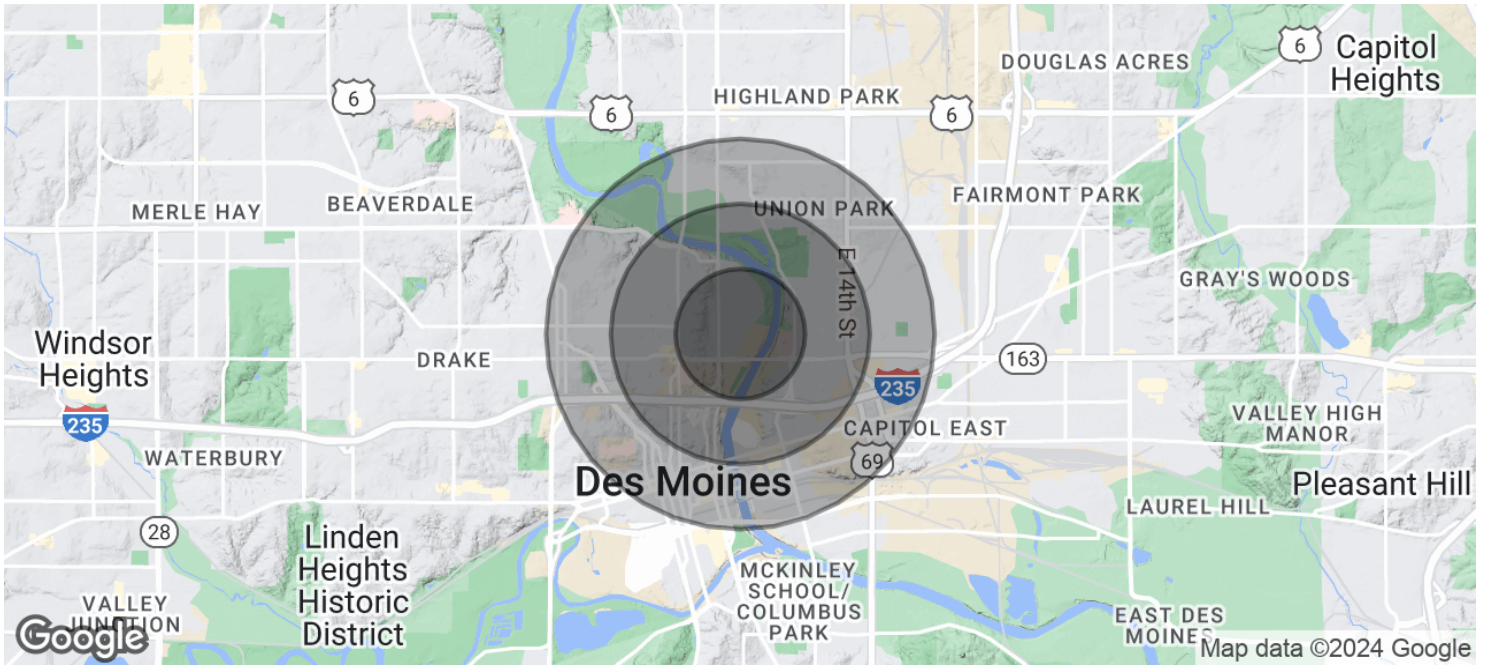
DARIN FERGUSON
515.778.6683
darin@fergusoncres.com

FOR SALE / LEASE

STOREY KENWORTHY

1333 OHIO ST DES MOINES, IA 50314

1333



Average House Value	\$84,137	\$85,569	\$137,410
----------------------------	----------	----------	-----------

* Demographic data derived from 2020 ACS - US Census



CRAIG CROSSLAND
515.975.5191
craig@fergusoncres.com

DARIN FERGUSON
515.778.6683
darin@fergusoncres.com