



FOR LEASE

DIAMOND VALLEY CENTER

1109-1287 SOUTH STATE STREET | HEMET, CA

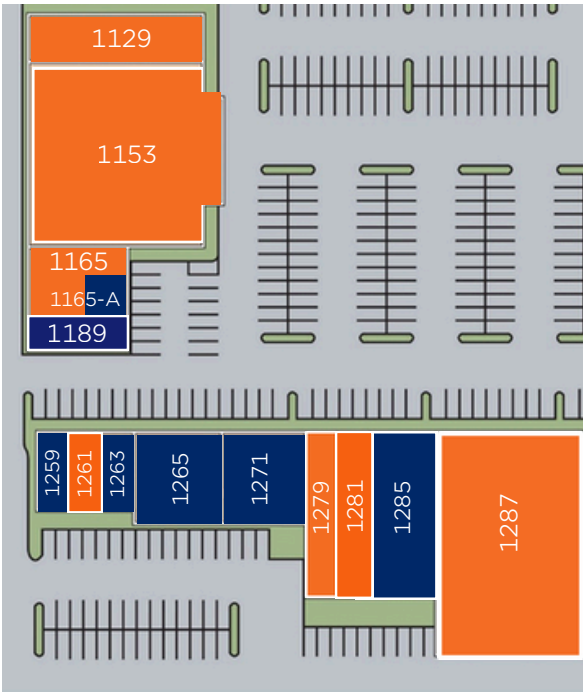
YOUR NAME HERE



JANET F. KRAMER, JD, CCIM
951.600.8634 x702
janetk@svn.com
CalDRE #01351570

PROPERTY SUMMARY

DIAMOND VALLEY CENTER | 1109-1287 SOUTH STATE STREET | HEMET, CA



Asking \$1.00-\$1.50 PSF NNN
Nets Currently \$0.36

TENANT ROSTER								
SUITE	TENANT	SF	SUITE	TENANT	SF	SUITE	TENANT	SF
1109	WATERMILL	±225	1189	RESTORATION	±1,200	1271	RESTAURANT	±3,600
1129	VACANT	±3,600	1259	CYNTHIA'S	±1,000	1279	VACANT	±3,082
1153	COMING SOON	±15,400	1261	VACANT	±1,000	1281	VACANT	±2,160
1165	VACANT	±2,210	1263	BARBER	±1,000	1285	TRI-VALLEY	±4,300
1165-A	HAIR SALON	±790	1265	EAGLES	±3,360	1287	VACANT	±15,000

JANET F. KRAMER, JD, CCIM
951.600.8634 x702
janetk@svn.com
CalDRE #01351570



SUITE 1153 PHOTOS

DIAMOND VALLEY CENTER | 1109-1287 SOUTH STATE STREET | HEMET, CA

SUITE 1153 - ±15,400 SF



UNIT	SF	Lease rate
1153	±15,400 SF	\$1.00 / SF / mo

JANET F. KRAMER, JD, CCIM
951.600.8634 x702
janetk@svn.com
CalDRE #01351570



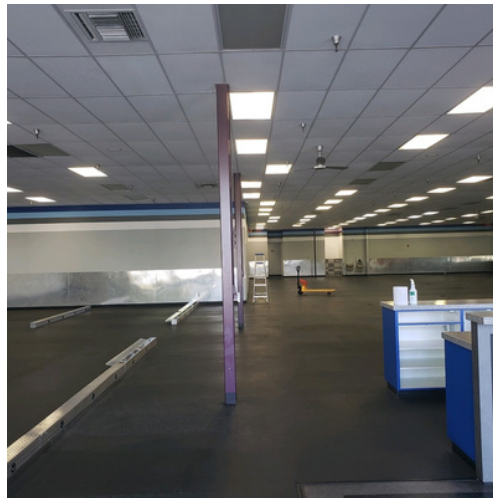
SUITE INTERIOR PHOTOS

DIAMOND VALLEY CENTER | 1109-1287 SOUTH STATE STREET | HEMET, CA

SUITE 1261 - ±1,000 SF



SUITE 1287 - ±15,000 SF



SUITE 1165 - ±2,210 SF



JANET F. KRAMER, JD, CCIM
951.600.8634 x702
janetk@svn.com
CalDRE #01351570



RETAILER MAP

DIAMOND VALLEY CENTER | 1109-1287 SOUTH STATE STREET | HEMET, CA



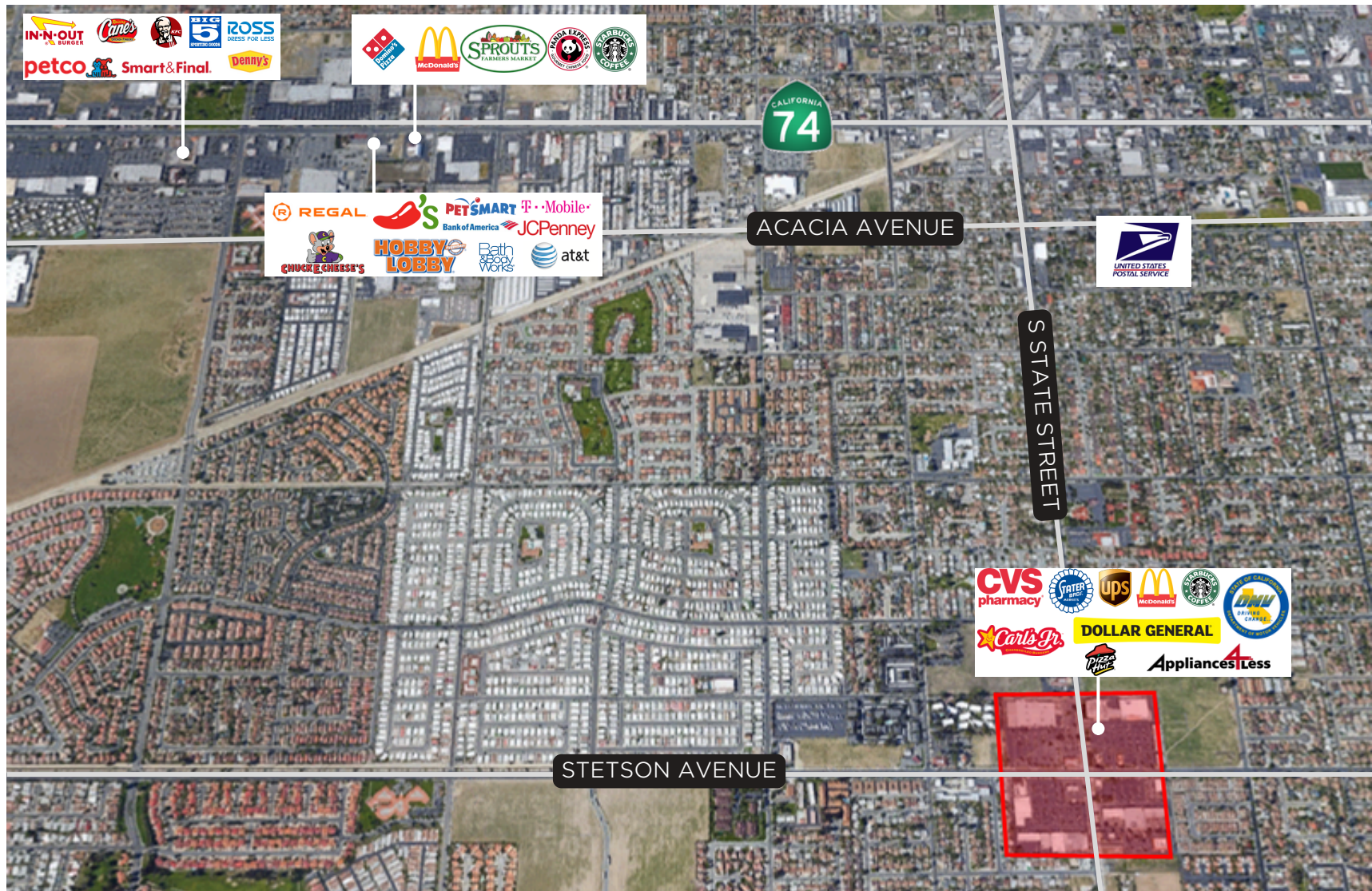
JANET F. KRAMER, JD, CCIM
951.600.8634 x702
janetk@svn.com
CalDRE #01351570



This statement with the information it contains is given with the understanding that negotiations relating to the purchase, renting or leasing of this property shall be conducted through this office. The information while not guaranteed has been secured from sources we believe to be reliable however, it is up to the buyer, tenant or landlord to verify the information and conduct appropriate due diligence. SVN | Insight, 2025

RETAILER MAP

DIAMOND VALLEY CENTER | 1109-1287 SOUTH STATE STREET | HEMET, CA



JANET F. KRAMER, JD, CCIM
951.600.8634 x702
janetk@svn.com
CaIDRE #01351570



This statement with the information it contains is given with the understanding that negotiations relating to the purchase, renting or leasing of this property shall be conducted through this office. The information while not guaranteed has been secured from sources we believe to be reliable however, it is up to the buyer, tenant or landlord to verify the information and conduct appropriate due diligence. SVN | Insight, 2025

DEMOGRAPHICS

DIAMOND VALLEY CENTER | 1109-1287 SOUTH STATE STREET | HEMET, CA



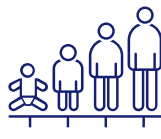
- State** California
- County** Riverside
- Mayor** Joe Males
- Website** hemetca.gov

POPULATION

Source: ESRI



99,267
POPULATION



39.1
MEDIAN AGE



34,772
HOUSEHOLDS

3-Mile
Radius



EMPLOYMENT



42%
WHITE COLLAR



33%
BLUE COLLAR



25%
SERVICES



8.6%
UNEMPLOYMENT RATE

EDUCATION



33%
HIGH SCHOOL
GRADUATE



34%
SOME COLLEGE



14%
BACHELORS/GRAD/
PROF DEGREE

INCOME



\$47,110
MEDIAN HOUSEHOLD
INCOME



\$23,472
PER CAPITA
INCOME



\$71,969
MEDIAN NET
WORTH

JANET F. KRAMER, JD, CCIM
951.600.8634 x702
janetk@svn.com
CalDRE #01351570

