



# ±4 Acres of Industrial Outdoor Storage with a ±8,184 SF Truck Terminal For Lease

2003 Cherry Hill Lane, Charleston, SC 29405

**MONTHLY RATE:**  
**\$9,000 PER ACRE**



LI - Light Industrial  
City of Charleston



±4.66 acres fully  
fenced and gated



19 dock-high  
bays, 1 drive-in

For Lease | 2003 Cherry Hill Lane

# Property Overview



## At-a-Glance

**±8,184 SF**  
Building Size

**±5.66 AC**  
Total Lot Size

**±4 AC**  
Usable Laydown  
Yard Available

**19**  
Dock-High Bays

**1**  
Drive-in

**Industrial**  
Split Zoning with  
Industrial Variance

**\$9,000**  
Per Acre Per Month

**20'**  
Center Height

**18'**  
Eave Height

**464-02-00-053**  
TMS #

## Industrial Outdoor Storage and Truck Terminal with Strategic Access to Hugh Leatherman Terminal and SC Ports

Located in Charleston's industrial corridor, 2003 Cherry Hill Lane offers ±4 acres of fully fenced and gated industrial outdoor storage with a ±8,184 SF truck terminal. The property benefits from an industrial variance by the City of Charleston and sits just minutes from the Hugh K. Leatherman Terminal, positioning it well for port-related logistics and storage operations.

With 19 dock-high bays, one drive-in door and approximately ±4 usable acres of outdoor storage, this property is well suited for trucking, container storage and heavy equipment operations. Priced at \$9,000/acre/month, it represents a competitive opportunity in one of the Southeast's most active industrial markets.



For Lease | 2003 Cherry Hill Lane

# Property Images

Gated Entry



Fully Fenced



Wando Welch Terminal

Hugh K. Leatherman Terminal

Hugh K. Leatherman Terminal |  $\pm 3$  Miles  
Wando Welch Terminal |  $\pm 11$  Miles



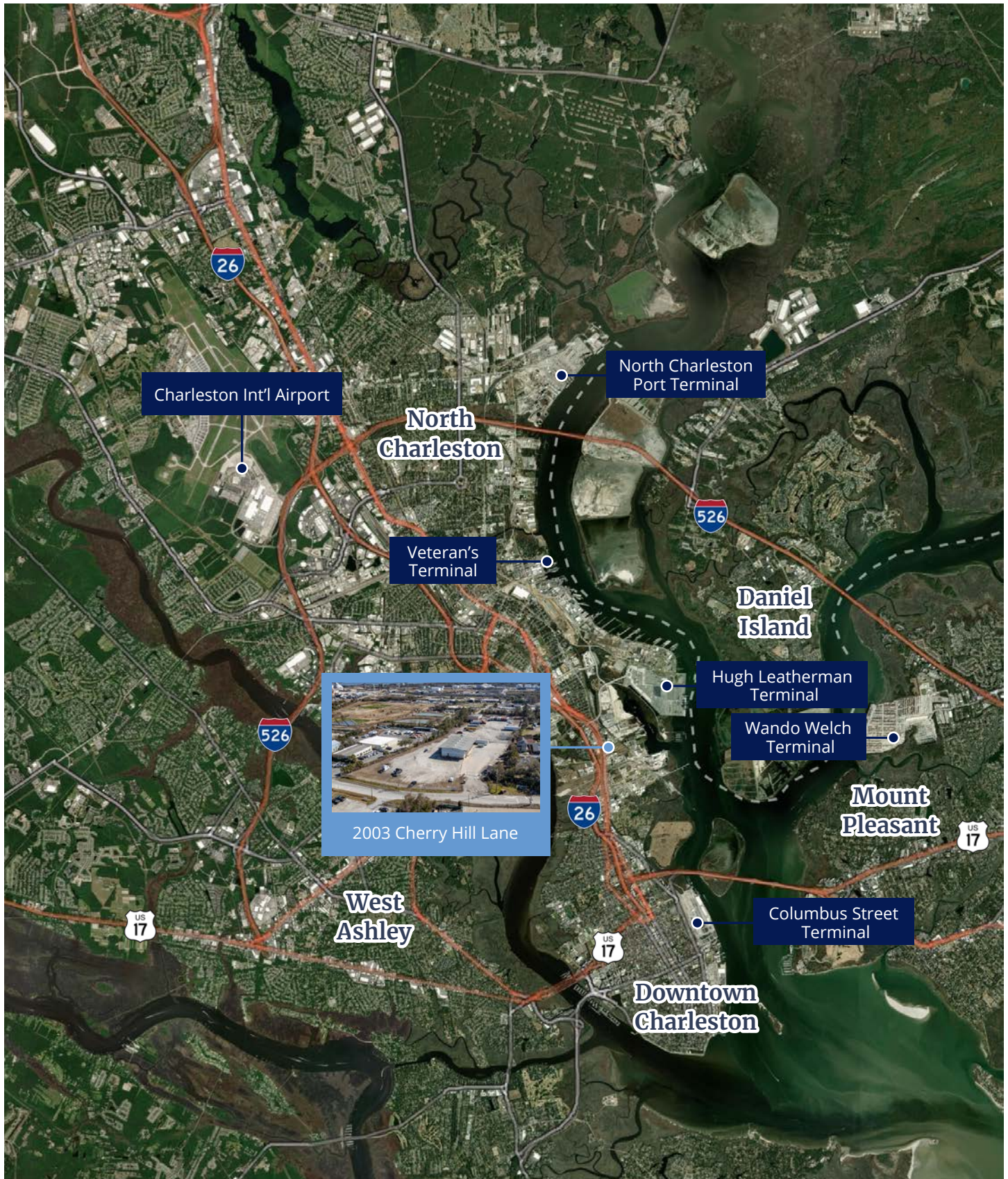
$\pm 19$  Dock-High Bays



I-26 |  $\pm 1$  Mile



# Location Overview





## Contact



**Jon-Michael Brock**, CCIM SIOR

Principal  
+1 864 978 3704  
jonmichael.brock@colliers.com



**Alex Whittemore**

Vice President  
+1 803 917 9560  
alex.whittemore@colliers.com



**Dillon Claffey**

Associate  
+1 843 709 2535  
dillon.claffey@colliers.com



Colliers | South Carolina  
960 Morrison Drive, Suite 400  
Charleston, SC 29403  
+1 843 747 1200

This document/email has been prepared by Colliers | South Carolina for advertising and general information only. Colliers makes no guarantees, representations or warranties of any kind, expressed or implied, regarding the information including, but not limited to, warranties of content, accuracy and reliability. Any interested party should undertake their own inquiries as to the accuracy of the information. Colliers excludes unequivocally all inferred or implied terms, conditions and warranties arising out of this document and excludes all liability for loss and damages arising there from. This publication is the copyrighted property of Colliers and /or its licensor(s). © 2026. All rights reserved. This communication is not intended to cause or induce breach of an existing listing agreement.

