

FOR LEASE | PROFESSIONAL OFFICE/MEDICAL SPACE

ALAMO CREEK PROFESSIONAL CENTER

301 ALAMO DR. AND 595 BUCK AVE., VACAVILLE, CALIFORNIA



PROFESSIONAL / MEDICAL / DENTAL OFFICE SPACE
LOCATED AT INTERSECTION OF BUCK AVENUE AND ALAMO DRIVE

SPACE 301-C ; APPROX 1,552 SF; PROF. OFFICE OR MEDICAL
301-D ; APPROX 1,050 SF; DENTAL/MEDICAL (ORAL SURGERY)
595-B ; APPROX 780 SF; PROF. OFFICE OR MEDICAL
595-J ; APPROX 342 SF; PROF. OFFICE OR MEDICAL

BUILDING GLA APPROX.. 13,971 R.S.F.

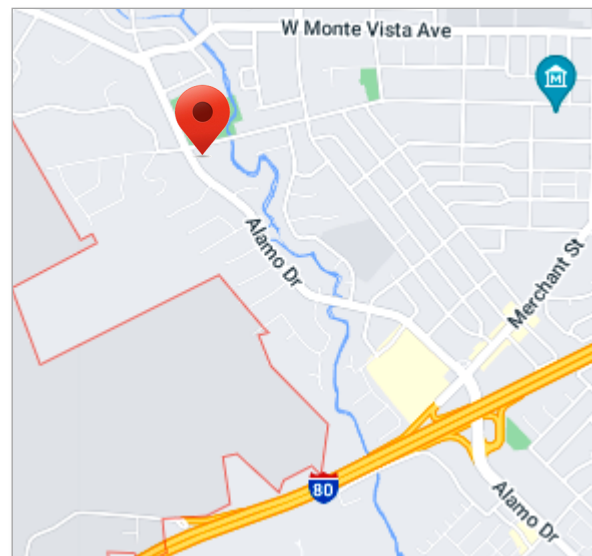
RENTAL RATE \$2.35 PER SF

YEAR BUILT 1975

BUILD-OUT SEE ATTACHED SPACE PLANS

AMENITIES

- AMPLE ON-SITE PARKING
- EXCELLENT STREET VISIBILITY
- LOCATED IN NORTH VACAVILLE; 0.5 MI. TO I-80 FWY
- CURRENT TENANTS INCLUDE MEDICAL, DENTAL, WELLNESS AND GENERAL OFFICE USERS ALIKE.
- MOVE-IN READY.



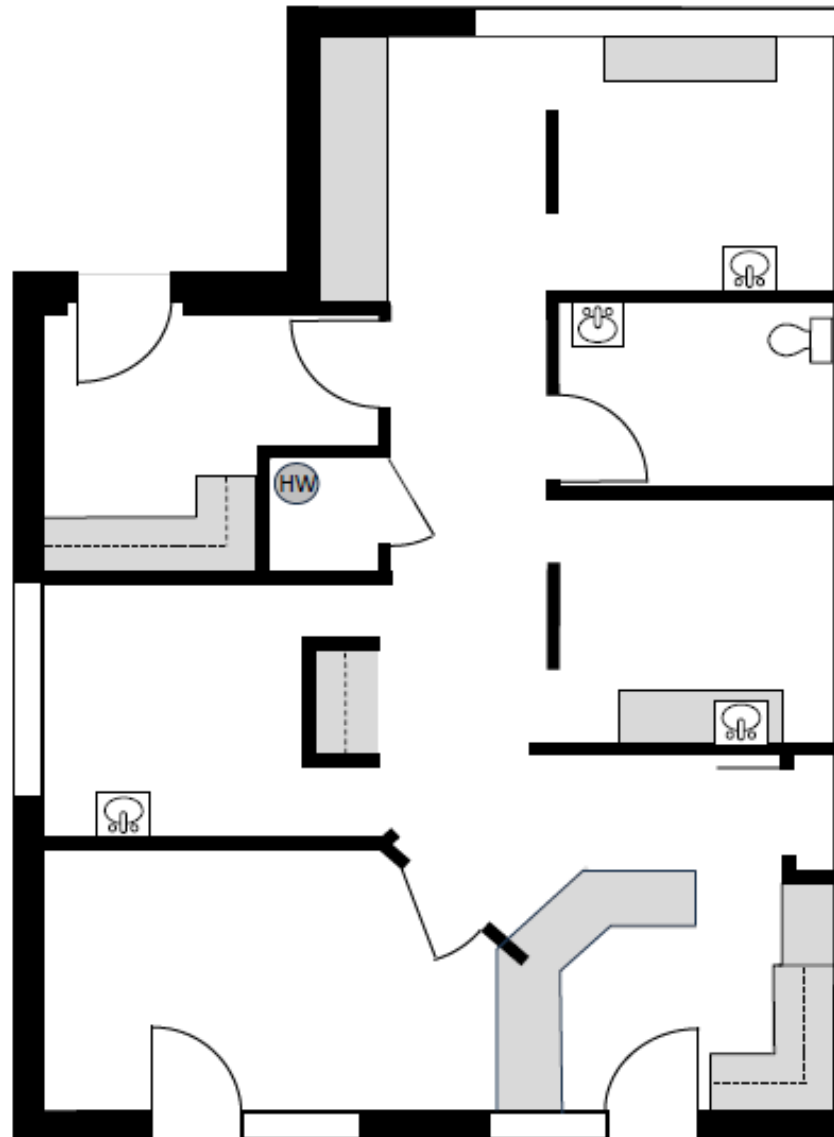
The information provided herein has been obtained from sources deemed reliable. Summit Properties does not guaranty its accuracy.

CONTACT:

Mary Ann Rollison
maryann@summitprops.com
707-479-0465
DRE #01055428

SPACE PLAN

301—D



Mary Ann Rollison
707-479-0465
marollison@sbcglobal.net
Lic. No. 01055428

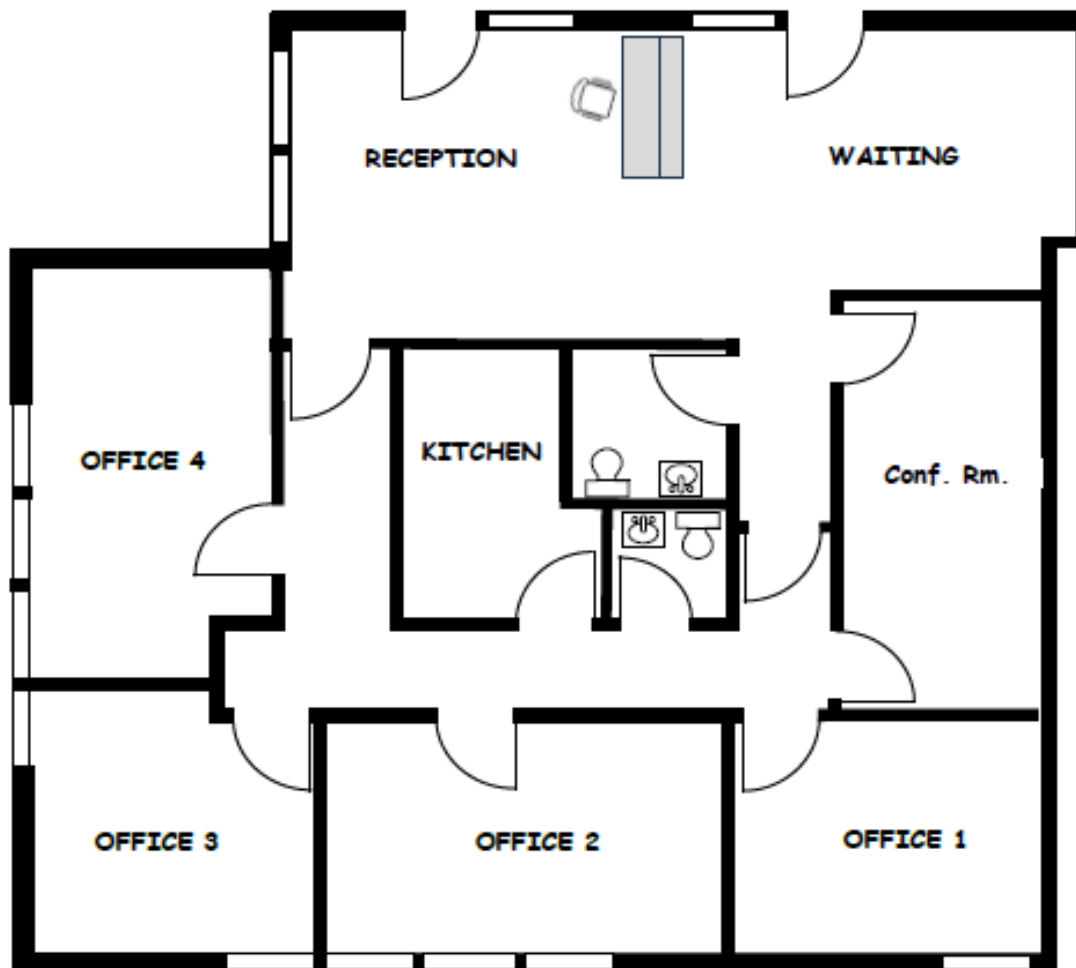
ALAMO CREEK PROFESSIONAL CENTER

301 Alamo Dr., Suite D
Vacaville, CA 95688

Approx 1050 USF; 1050 RSF
(not to scale)

SPACE PLAN

301-C Alamo Dr.



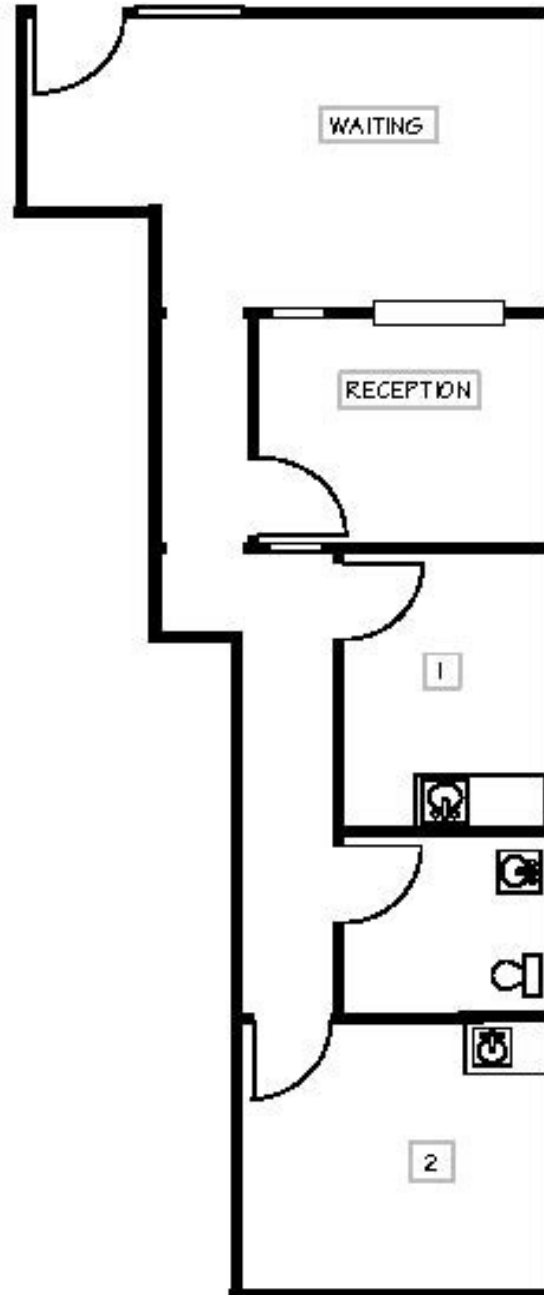
Mary Ann Rollison
707-479-0465
marollison@sbcglobal.net
Lic. No. 01055428

301 ALAMO DRIVE, SUITE C

Vacaville, CA 95688
Approx 1,552 SF
(not to scale)

SPACE PLAN

595 -B BUCK AVE.

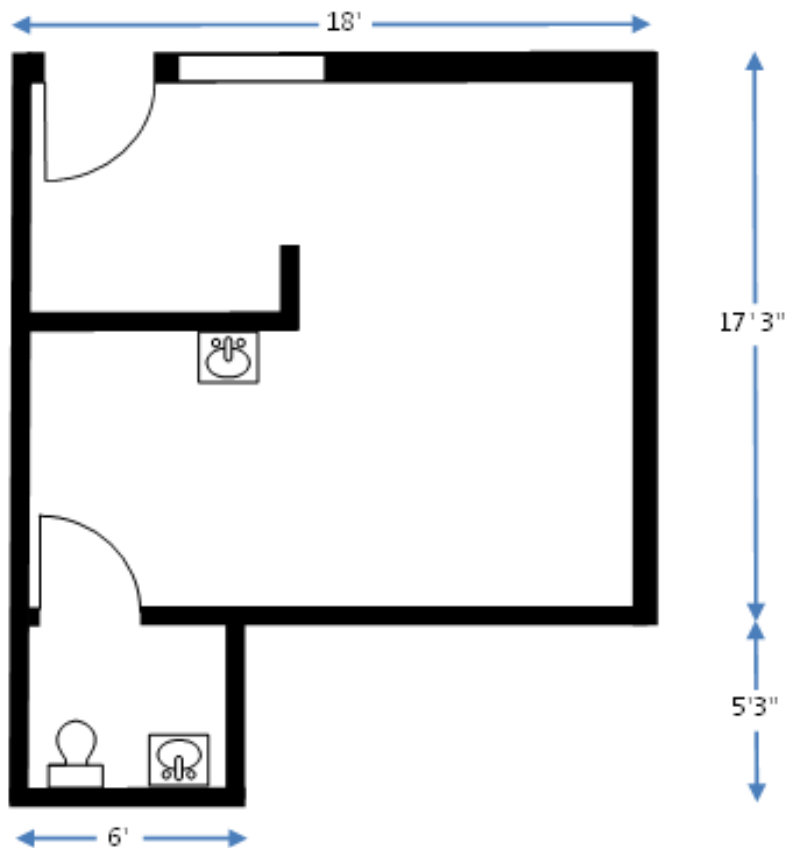


Mary Ann Rollison
707-479-0465
marollison@sbcglobal.net
Lic. No. 01055428

**ALAMO CREEK
PROFESSIONAL CENTER**
595 Buck Ave., Suite B
Approx 780 SF

SPACE PLAN

595—J Alamo Dr.



Mary Ann Rollison
707-479-0465
marollison@sbcglobal.net
Lic.No. 01055428

ALAMO CREEK PROFESSIONAL CENTER
301 Alamo Dr., Suite J

Approx 342 USF; 342 RSF
(Not to Scale)