

FULLY BUILT-OUT MEDICAL CONDO

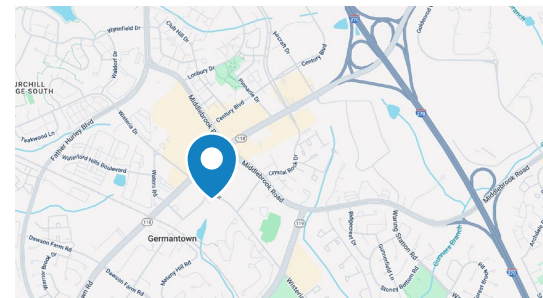
Turn-key | Ground Floor | Walk-up access

- 1133 Square Feet, Ground Floor, Corner unit, Class B Medical Condo with fresh LTV Flooring and LED lighting system.
- Three exam rooms, 1 office, 1 Lab room, 1 ADA accessible bathroom, 1 large reception area, and large waiting room
- Free ample service parking for patients and physicians
- Just a ½ mile from I 270 and less than 1 mile from laurel medical center and rather less than 2 miles from holy cross hospital.
- Physician community built in referral sources

Condo Features

- Move in ready for any medical user
- Pristine medical grade finishes
- Brand new appliances in ADA Accessible bathroom
- Updated water heater with new plumbing
- CAT 5 cabling done inside the walls

Condo Highlights



Less than 1 Mile
from Laurel
Medical Center



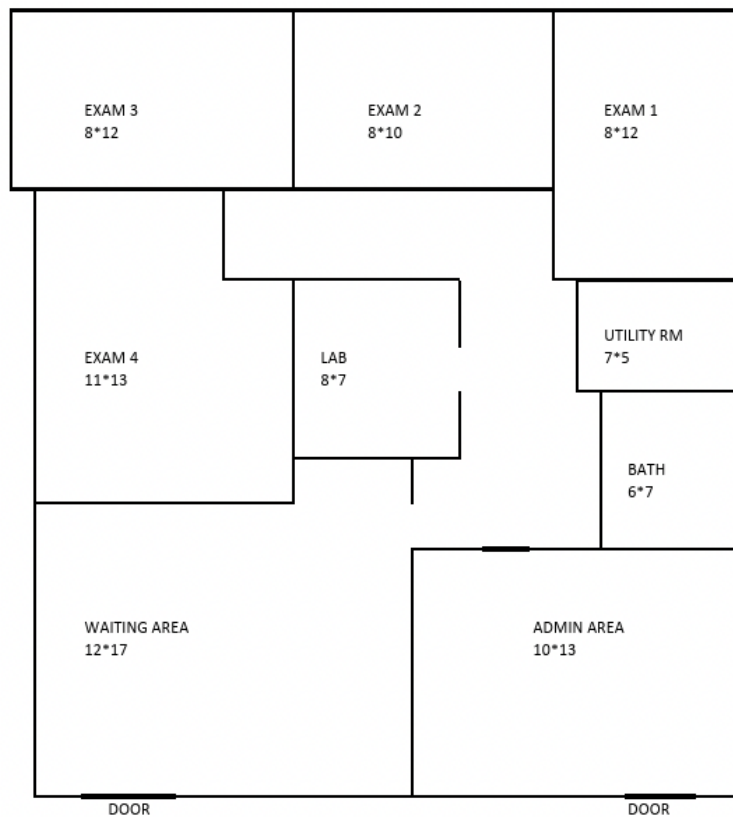
Ample Free
Surface Parking



Physician
Community Built-In
Referral Sources



19514 Doctors Drive



For more information or to schedule a property tour, please contact:

CONNOR J. EBEL: 240.204.3391 | cebel@hprgrealty.com

CHARLES FEITEL: 240.372.4867 | cfeitel@hprgrealty.com

HPRGrealty.com

HPRG HEALTH-PRO+
REALTY GROUP

This document/email has been prepared by HPRG for advertising and general information only. HPRG makes no guarantees, representations or warranties of any kind, expressed or implied, regarding the information including, but not limited to, warranties of content, accuracy and reliability. Any interested party should undertake their own inquiries as to the accuracy of the information. HPRG excludes unequivocally all inferred or implied terms, conditions and warranties arising out of this document and excludes all liability for loss and damages arising there from. This communication is not intended to cause or induce breach of an existing listing agreement.

+++++