

# FORMER SUNTRUST BANK

201 W REYNOLDS ST, PLANT CITY, FL 33563

FOR LEASE




## LOCATION DESCRIPTION

Rare redevelopment opportunity for a mixed use or vertical development in Plant City's Downtown

## PROPERTY HIGHLIGHTS

- Full city block available - 1.26 acres
- 8,705 SF freestanding building available
- Situated within the heart of Plant City CBD at the signalized intersection of Reynolds St & N Evers St across from City Hall
- Located 1.3 miles to Interstate 4 with easy on/off Interstate accessibility
- 4 drive-up teller stations and a drive-up ATM lane
- 1 Pylon sign with excellent visibility, ample parking, and multiple access points
- Traffic Count (AADT) : E Reynolds - 11,000 & N Wheeler St - 6,300



 DEMOGRAPHICS	1 MILE	3 MILES	5 MILES
Total Population	9,827	42,905	71,208
Daytime Population	11,648	46,418	68,306
Households	3,419	15,641	25,069
Average HH Income (\$)	\$69,194	\$84,750	\$92,564



**JEREMY KRAL**  
jeremy.kral@tscg.com  
813.547.6804

**DOUG HOLTZMAN**  
doug.holtzman@tscg.com  
813.547.6804

# FORMER SUNTRUST BANK

201 W REYNOLDS ST, PLANT CITY, FL 33563

# FOR LEASE



**JEREMY KRAL**

jeremy.kral@tscg.com  
813.547.6804

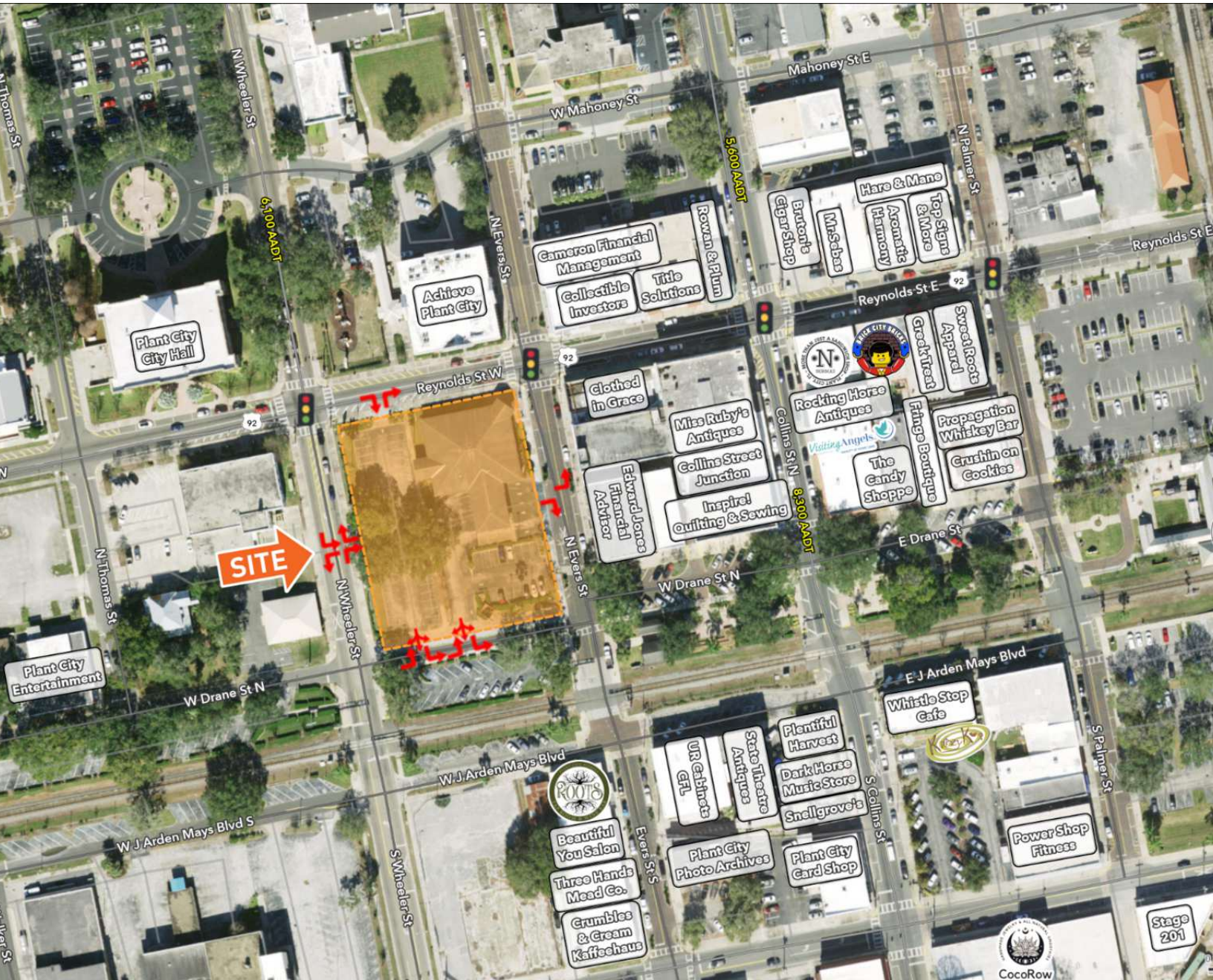
**DOUG HOLTZMAN**

doug.holtzman@tscg.com  
813.547.6804

# FORMER SUNTRUST BANK

201 W REYNOLDS ST, PLANT CITY, FL 33563

# FOR LEASE



**JEREMY KRAL**

jeremy.kral@tscg.com  
813.547.6804

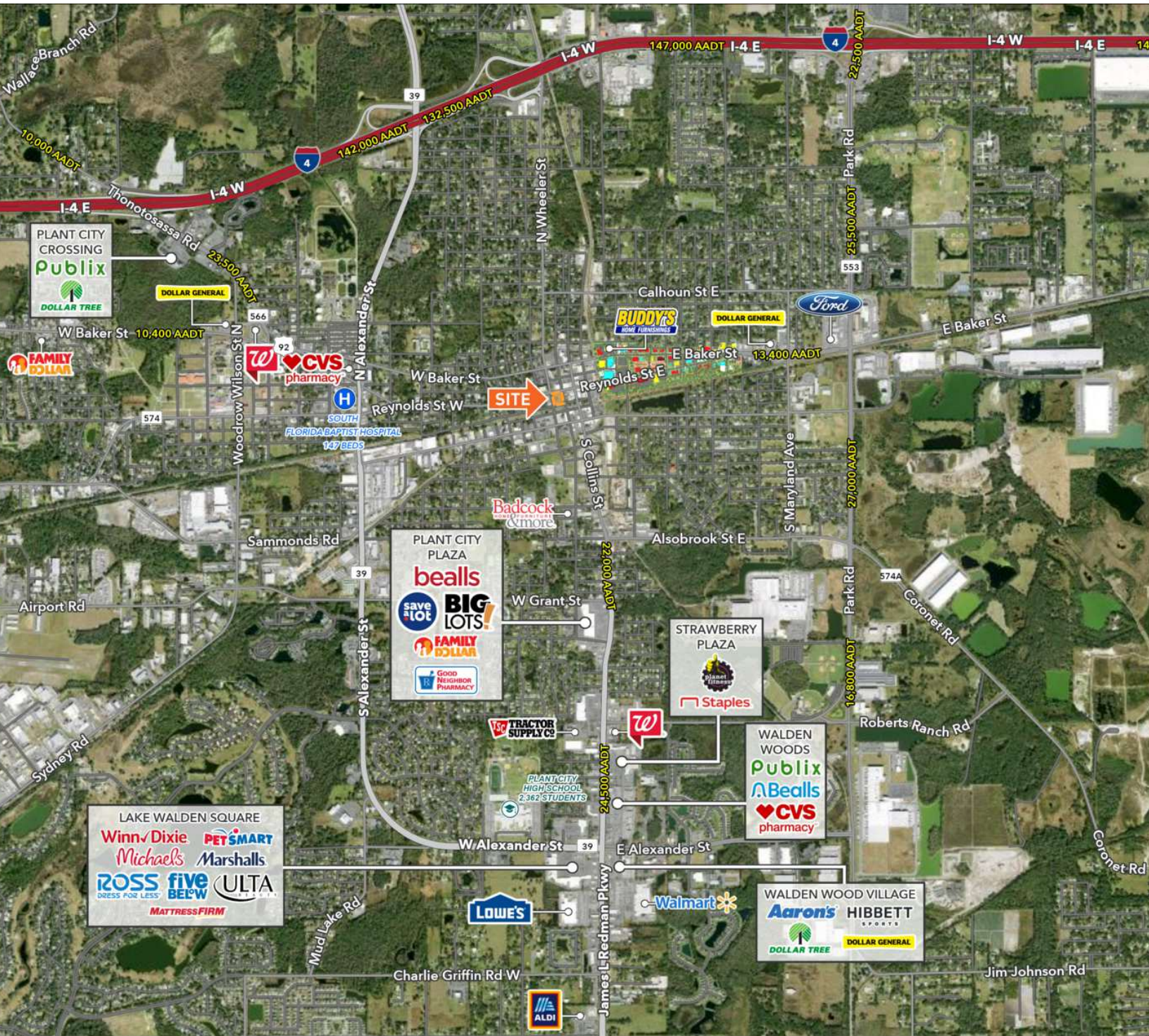
**DOUG HOLTZMAN**

doug.holtzman@tscg.com  
813.547.6804

# FORMER SUNTRUST BANK

# FOR LEASE

201 W REYNOLDS ST, PLANT CITY, FL 33563



**JEREMY KRAL**

jeremy.kral@tscg.com  
813.547.6804

**DOUG HOLTZMAN**

doug.holtzman@tscg.com  
813.547.6804