



**SPERRY**  
COMMERCIAL REALTY ASSOCIATES

**GRANITE HILL  
SHOPPES  
1461 HOOKSETT RD,  
HOOKSETT, NH**

**HIGHLY VISIBLE  
RETAIL SPACES FOR  
LEASE**



**JOSHUA SOLLOWAY**  
ASSOCIATE  
603-289-1405



**JESSE HEPLER**  
SENIOR ASSOCIATE  
603-785-2246



**[www.TheCREassociates.com](http://www.TheCREassociates.com) | 603.262.3555 | 169 South River Road, Bedford, NH**





## DESCRIPTION

Granite Hill Shoppes offers an inviting retail environment in a beautifully maintained, park-like setting along busy Hooksett Road (US 3/NH 28). With over 21,000 vehicles passing daily and access through a convenient signalized intersection, the center provides excellent exposure and accessibility.

Two well-positioned retail suites, one 952 SF and the other approximately 1,025 SF, are now available—both in move-in ready condition and featuring private restrooms.

The plaza benefits from a strong mix of neighboring tenants, abundant on-site parking, and close proximity to surrounding residential communities. This is an ideal opportunity for retailers or service-oriented businesses seeking a high-visibility location within one of Hooksett's most active commercial corridors.

# HIGHLIGHTS

- 2 Spaces Available:
  - A-5 (952sf) \$14.00 NNN
  - C-9 (1,025sf) \$12.00 NNN
- Prime Location
- Private Restrooms
- High Visibility
- Ample Parking
- Move-In Ready



## Population

1 Mile: 2,360  
3 Miles: 16,354  
5 Miles: 54,370



## Median Income

1 Mile: \$114,862  
3 Miles: \$123,417  
5 Miles: \$121,053

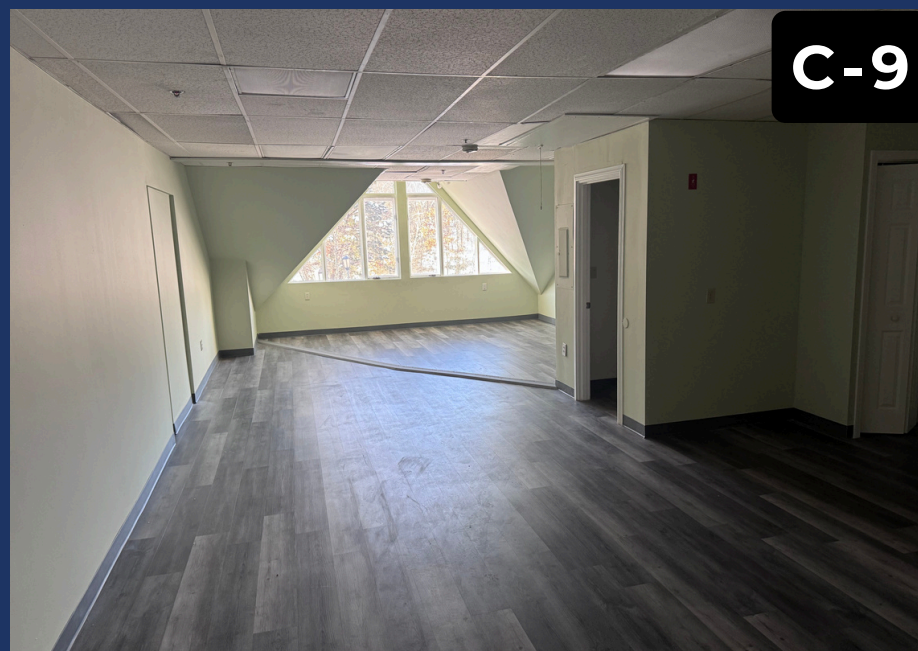


## Median Age

1 Mile: 46  
3 Miles: 43  
5 Miles: 42



# ADDITIONAL PHOTOS





# AERIAL VIEW

