



**MARKETING FLYER**

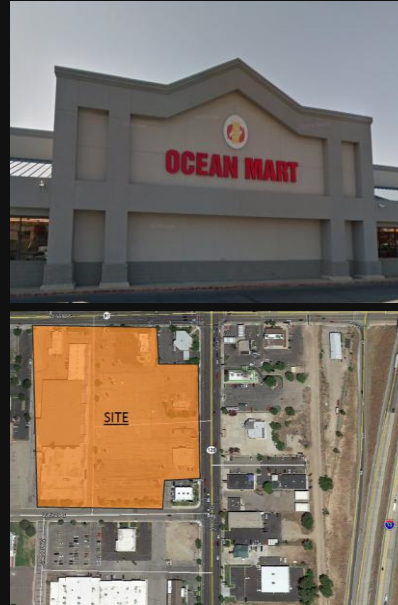
# **ROY CITY CENTER**

5600 S. 1900 W. | ROY, UT

**COLLIN TUTTLE**

801-482-7513

[c\\_tuttle@woodburycorp.com](mailto:c_tuttle@woodburycorp.com)



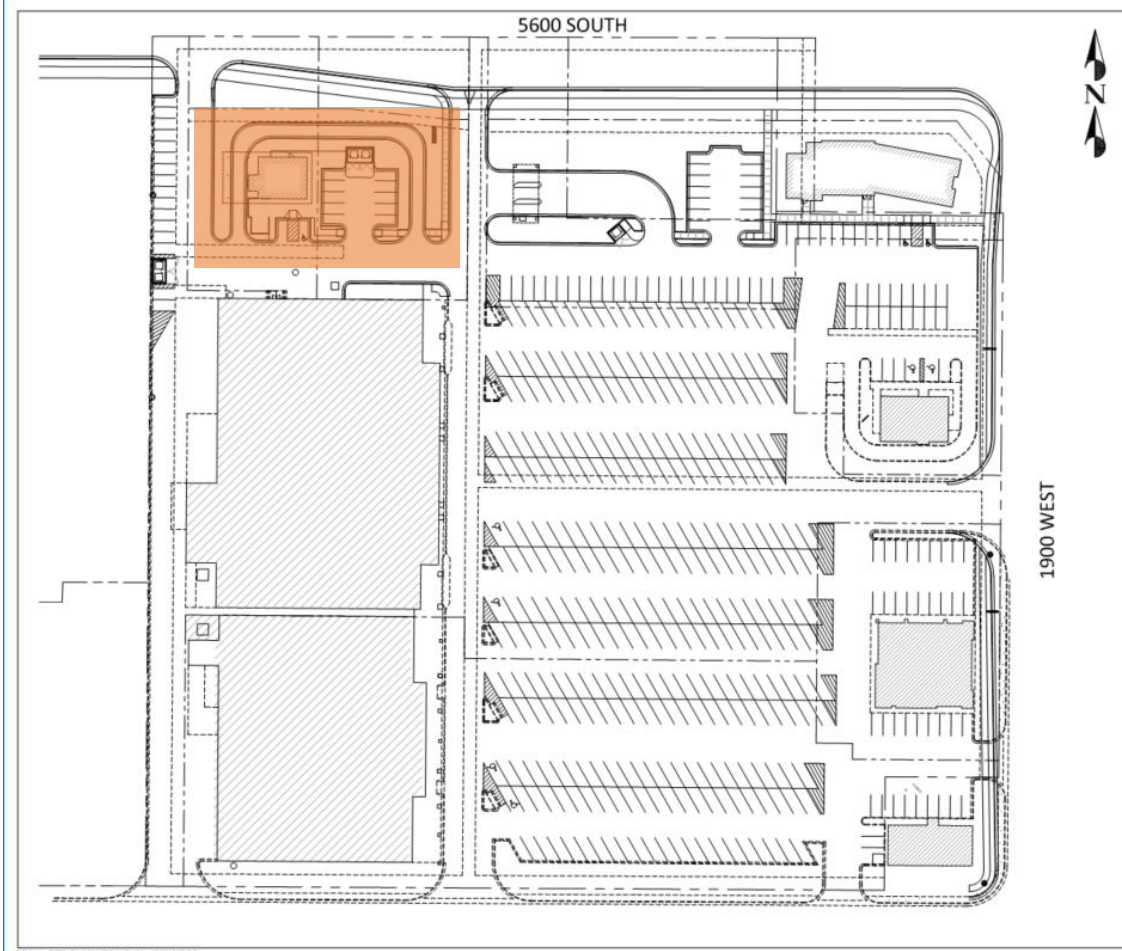
## PROJECT HIGHLIGHTS

- Across the freeway from Northrop Grumman's Roy Innovation Center
- Grocery anchored center
- Directly off of I-15 on 5600 South
- Near high traffic intersection of 5600 South and 1900 West

DEMOGRAPHICS	1 Mile	3 Mile	5 Mile
Population	10,864	91,412	204,046
Households	3,823	29,973	67,209
Median HH Income	\$66,102	\$73,363	\$74,882
Average HH Income	\$80,953	\$89,114	\$93,902

TRAFFIC	5600 South Offramp	1900 West Heading North	TOTAL
AADT	36,000	43,000	79,000



**GROUND LEASE AVAILABLE**

