

CLASS A CORPORATE OFFICE BUILDING

150
PARKSHORE DR
Folsom | California

SALE PRICE

REDUCED

TO \$11,960,000 (\$195/SF)

FOR SALE OR LEASE

±61,338 TOTAL SQUARE FEET FOR SALE

±12,600 TO ±25,200 TOTAL SQUARE FEET FOR LEASE

NEWMARK

Craig Brinitzer 916.569.2311 ♦ Jason Brinitzer 916.569.2341



Project Highlights

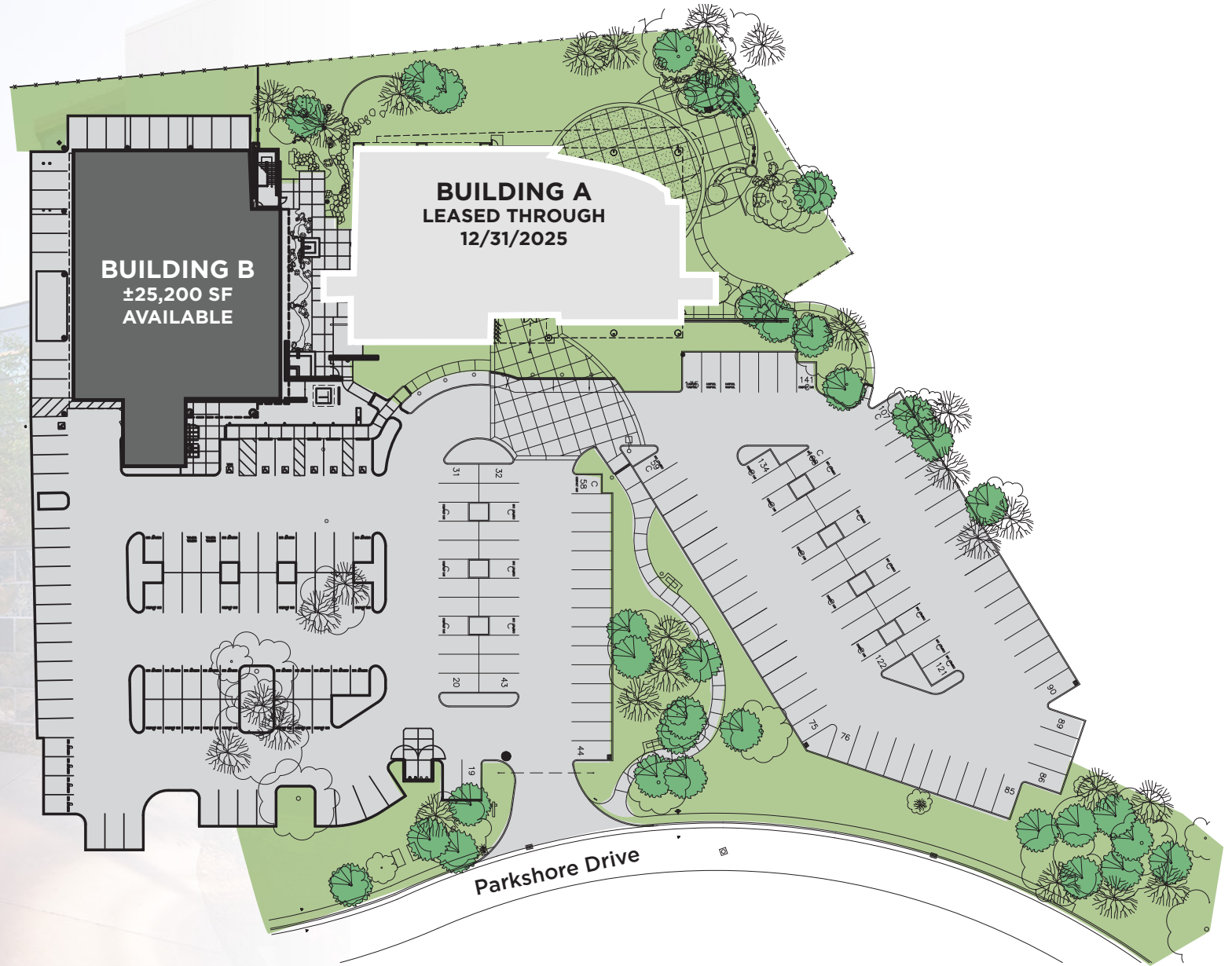
- ◆ **SALES PRICE:** \$11,960,000 (\$195/PSF)
\$15,750,000 (\$257/PSF)
- ◆ **LEASE RATE:** \$2.55/PSF (Gross-Full Service)
- ◆ **TOTAL RENTABLE AREA:** ±61,338 SF
- ◆ **LEASED AREA:** ±36,108 SF
- ◆ **AVAILABLE TO LEASE:** ±12,600 SF to
±25,200 SF (Bldg. B)
- ◆ In-place income of approximately \$79,500.00 per month (MG)
- ◆ Large Break Room with Adjacent BBQ Patio, Seating Area, Fire Place and Water Feature
- ◆ Unobstructed Lake Natoma Views with Exterior Balconies
- ◆ Above Standard Steel, Glass and Drivit Construction with Flexible Floor Plates
- ◆ Very Efficient Floor Plan
- ◆ Abundant Parking (4 stalls per 1,000 square feet) with 38 Covered Parking Stalls
- ◆ ±24,000 Square Feet of Raised Access Floor System
- ◆ Abundantly Landscaped Campus with Tranquil Courtyard and Meandering Water Features
- ◆ Auditorium/Training Room with Professional Sound System
- ◆ American River Bike Trail Access
- ◆ Building and Monument Signage
- ◆ Showers with Locker Rooms
- ◆ 1,200 AMP, 480/277V 3 Phase Power

150 Parkshore Drive, Folsom CA


- ◆ Two-Building Corporate Campus Connected by Skybridge
- ◆ Stunning Lake Natoma Views with American River Bike Trail Access
- ◆ Walking Distance to Light Rail
- ◆ Minutes from Highway 50, Providing Access to Sacramento's Downtown and the State Capital
- ◆ Located in the Heart of Sacramento's Highly Desirable Folsom Submarket
- ◆ Submarket is Home to Intel, California ISO, Agilent Technologies, Vision Service Plan, Mercury Insurance, Johnson Controls, General Dynamics and Other Large Users.

Location Highlights

Site Plan

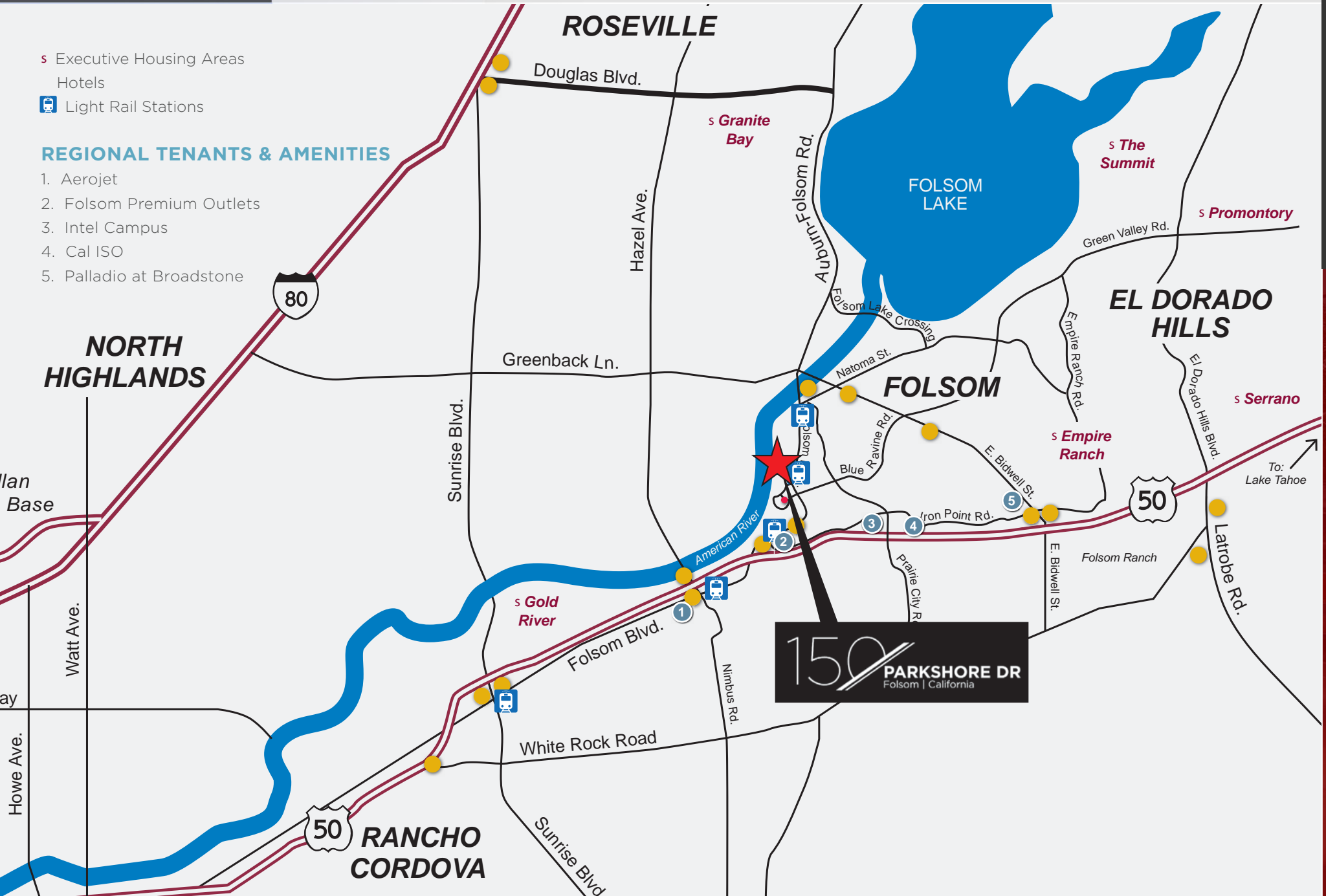


Location Map

- s Executive Housing Areas
- Hotels
-  Light Rail Stations

REGIONAL TENANTS & AMENITIES

1. Aerojet
2. Folsom Premium Outlets
3. Intel Campus
4. Cal ISO
5. Palladio at Broadstone



150 PARKSHORE DR
Folsom | California

Lake Natoma

American River Bike Trail



Tenants

1 Western Area Power Administration	5 Mercury Insurance	9 Dokken Engineering
2 Sierra Nevada Corp	6 Agilent Technologies	10 e-Republic
3 Business Central	7 Johnson Controls	11 Inductive Automation
4 Agilent Technologies	8 Allergy	12 Vision Service Plan

Amenities

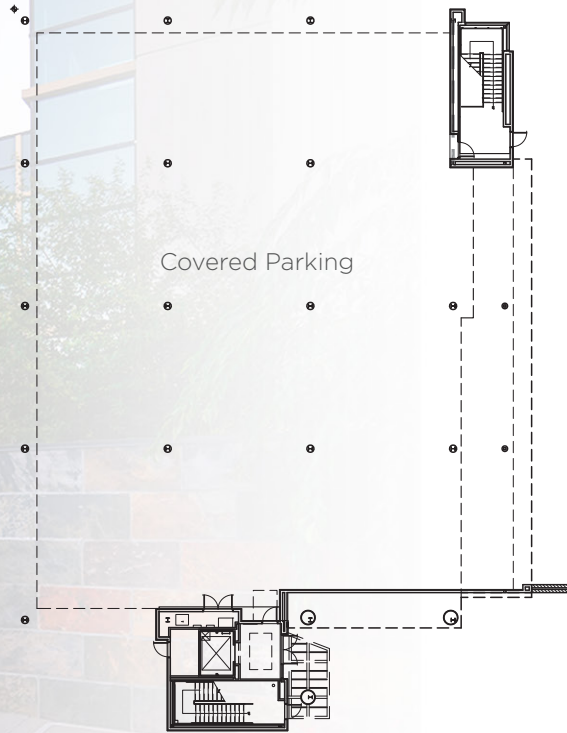
1 Dominick's Deli	5 Lotus 8 Asian Cuisine	10 I Love Teriyaki & Sushi
2 Cooper's Coffee House	6 Kindercare	11 Rak Thai Cuisine
3 Jamba Juice/UPS Store	7 Dos Coyotes Border Cafe	12 Mel's Diner
4 Subway/Taco Loco	8 Skipolini's Pizza	13 Willow Cafe
	9 Starbucks	

Bus Stops
 Light Rail

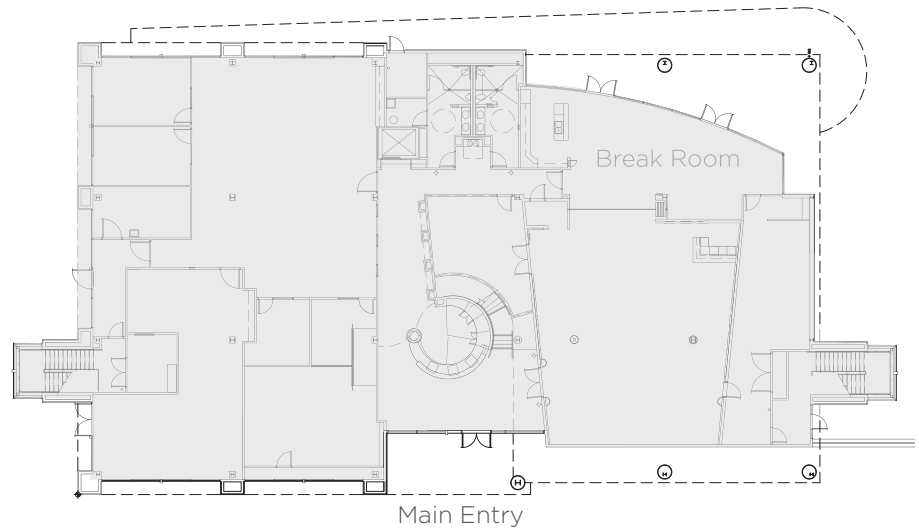
Floor Plans

FIRST FLOOR

BUILDING B



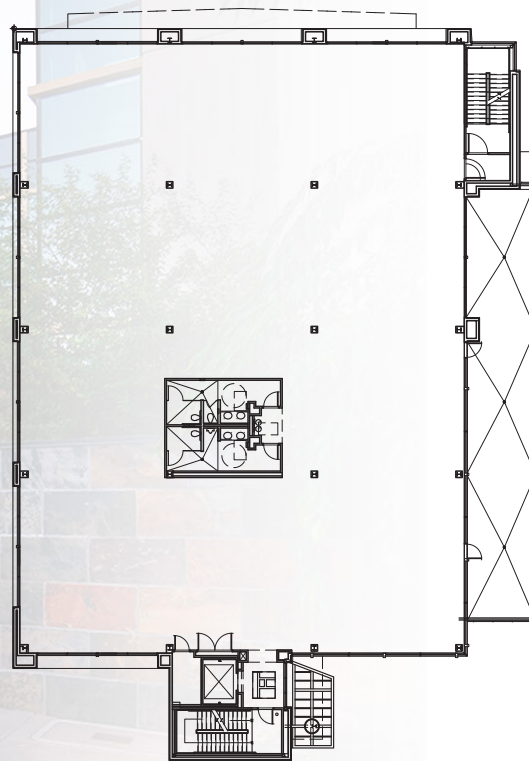
BUILDING A LEASED THROUGH 12/31/2025



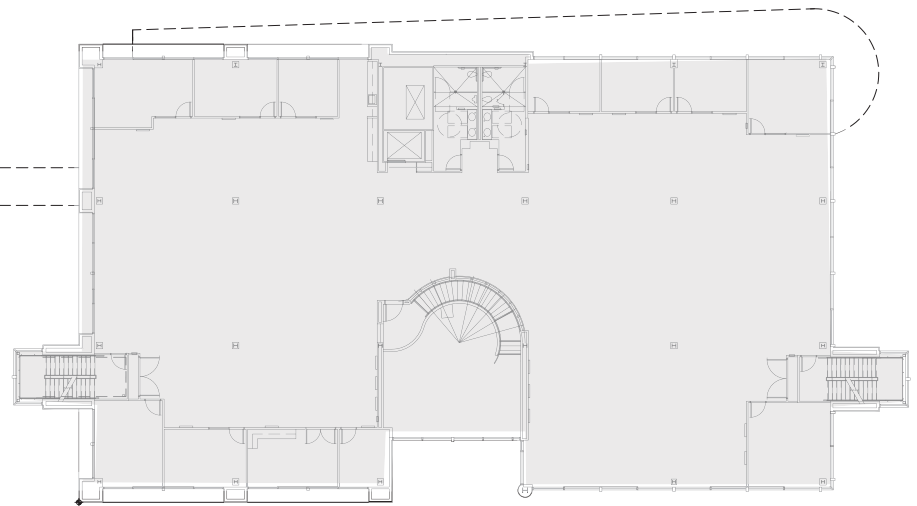
Floor Plans

SECOND FLOOR

BUILDING B

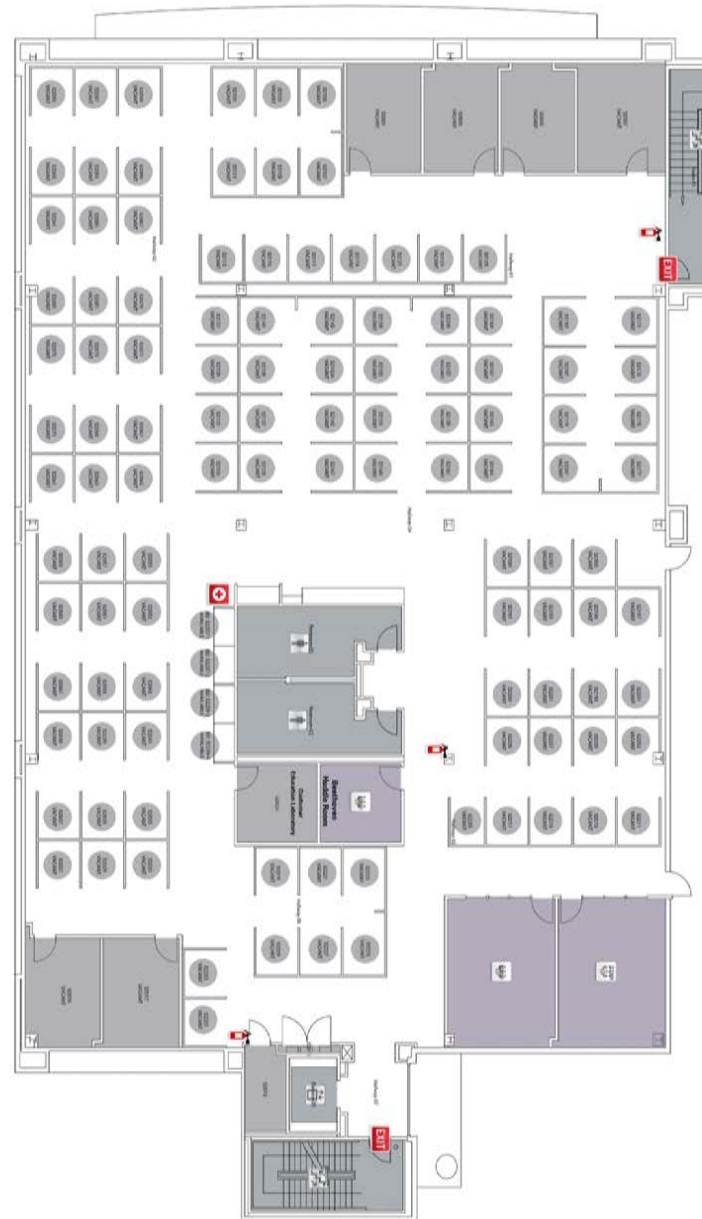


BUILDING A



Floor Plans

SECOND FLOOR SOUTH
8 PRIVATE OFFICES, 2 CONFERENCE ROOMS, 111 CUBES



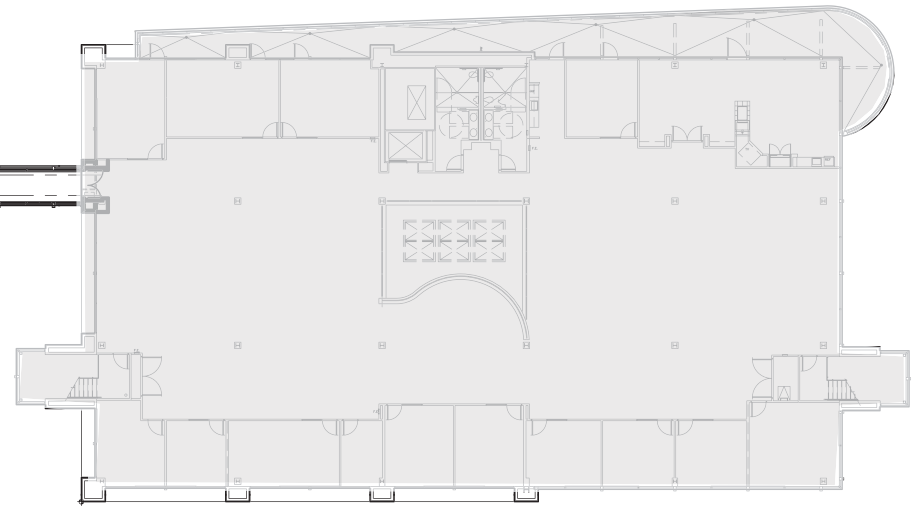
Floor Plans

THIRD FLOOR

BUILDING B

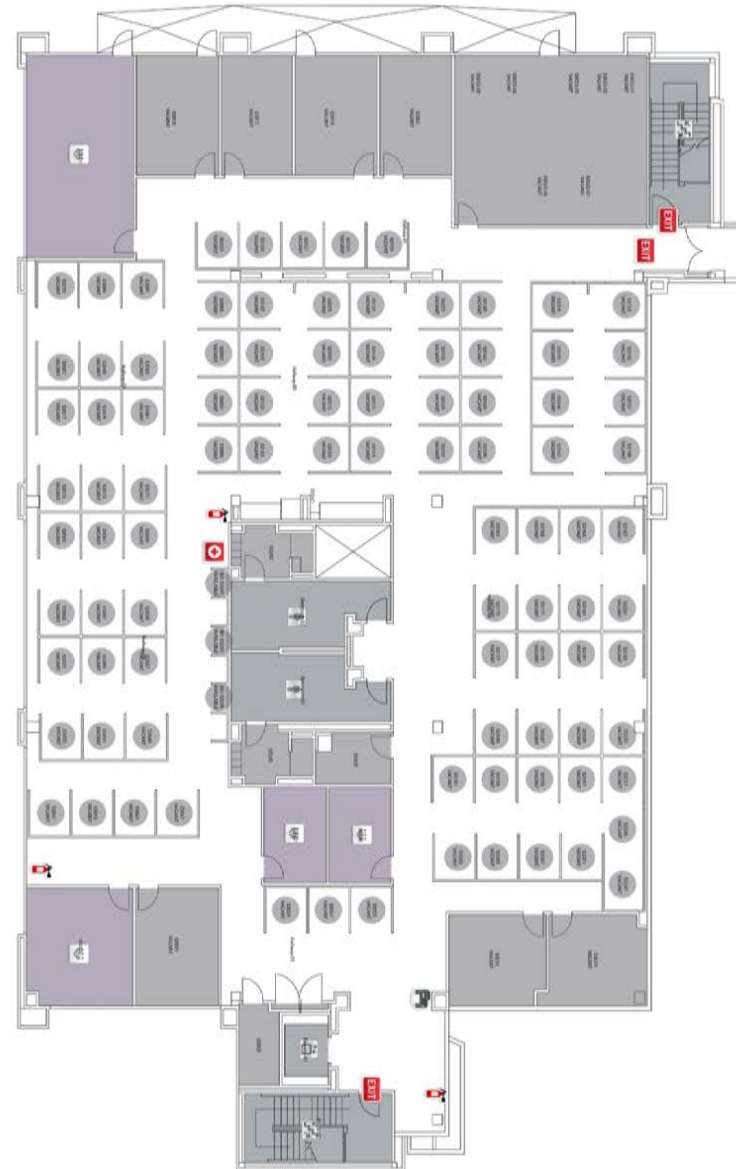


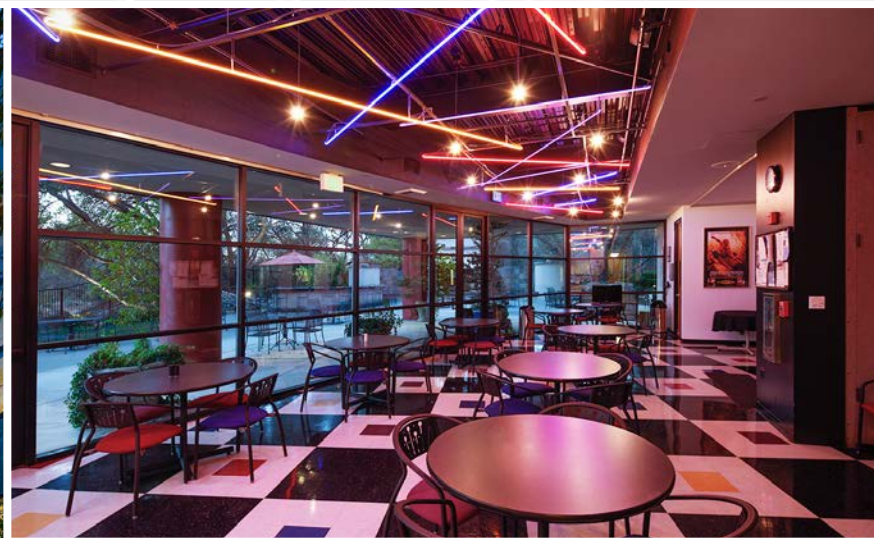
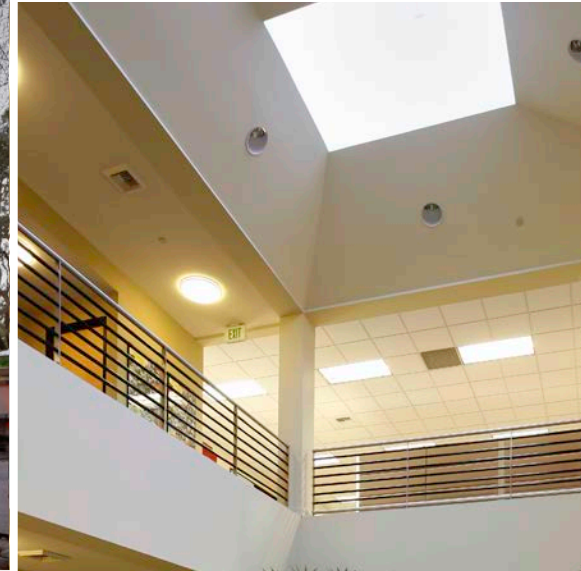
BUILDING A

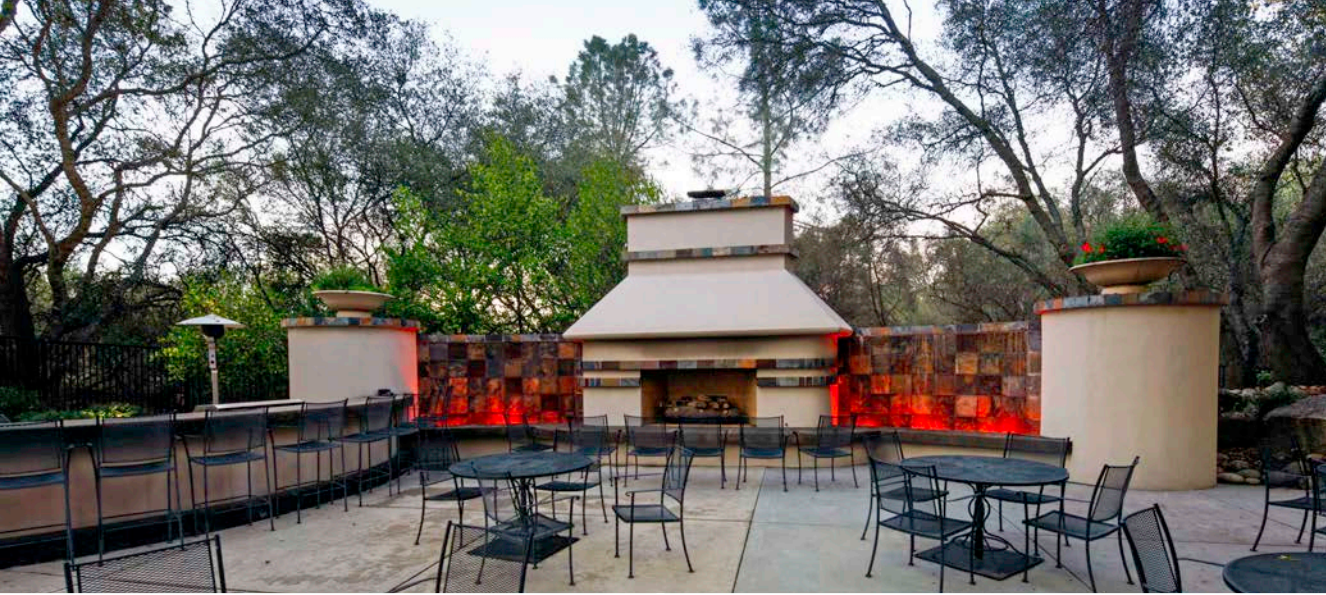


Floor Plans

THIRD FLOOR SOUTH
10 PRIVATE OFFICES, 2 CONFERENCE ROOMS, 112 CUBES









150
PARKSHORE DR
Folsom | California

Craig Brintzer ♦ Executive Managing Director ♦ 916.569.2311 ♦ Craig.Brintzer@nmrk.com ♦ CA RE Lic#00928221
Jason Brintzer ♦ Associate ♦ 916.569.2341 ♦ Jason.Brintzer@nmrk.com ♦ CA RE Lic#02114854

NEWMARK

980 9th Street, Suite 2500, Sacramento, CA 95814

The distributor of this communication is performing acts for which a real estate license is required. The information contained herein has been obtained from sources deemed reliable but has not been verified and no guarantee, warranty or representation, either express or implied, is made with respect to such information. Terms of sale or lease and availability are subject to change or withdrawal without notice. 15-0041 08/24