



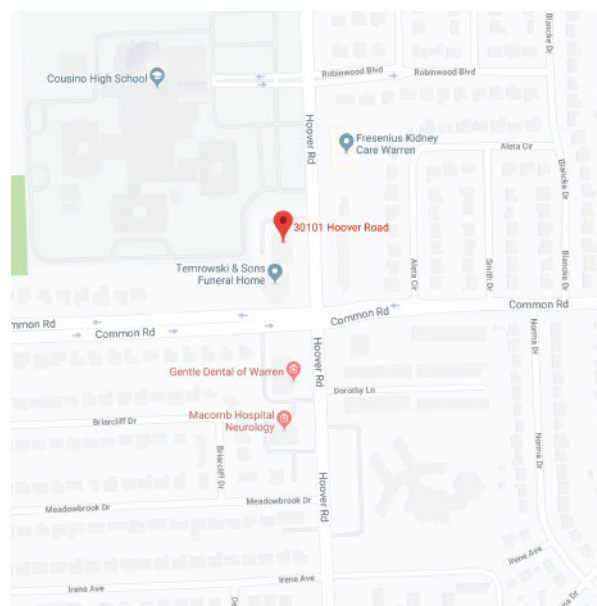
PILOT
PROPERTY GROUP

30101 HOOVER ROAD, WARREN

PROPERTY OVERVIEW:

Full basement not included in square footage adds storage and more.
Monument signage available.
Floor Plan included.

- Property Type:..... Office/Medical
- Cross Streets:..... North of Common Rd., Off Hoover
- Square Footage Available:.... 2,075
- Lease Rate:..... \$14.95
- Lease Type..... Gross + Utilities
- Year Built:..... 1978
- Zoning:..... Office/Medical/Dental
- Parking Spaces:..... 35+

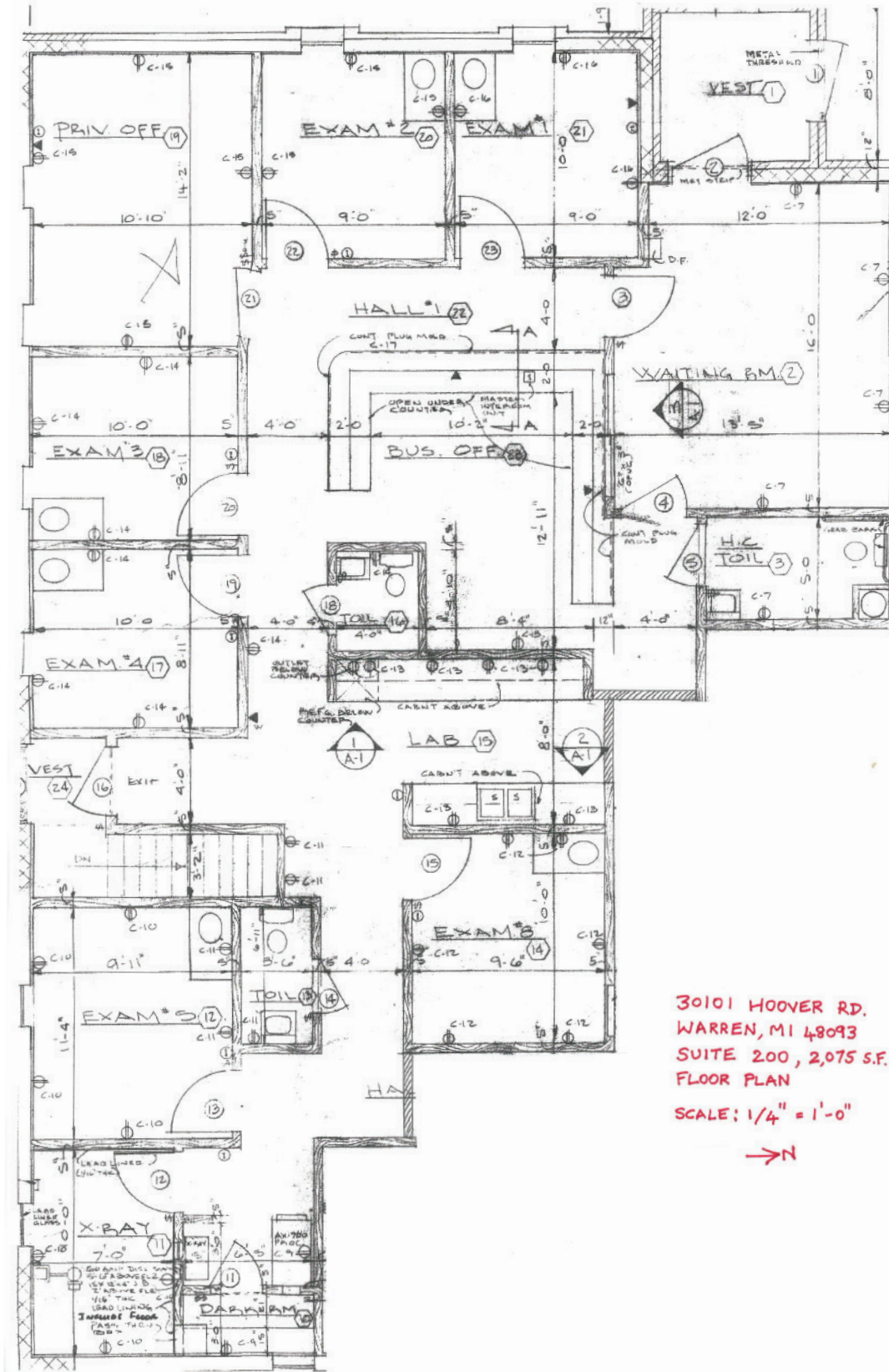


AGENT CONTACT INFO

ANTHONY RUBINO O: 586.254.0900 x101 • C: 586.873.5419 • anthony@pilotpg.com
JIMMY DIEHL O: 586.254.0900 x109 • C: 586.337.5241 • j.diehl@pilotpg.com

Matching the right people to the right place.

SUITE 200 FLOOR PLAN



Matching the right people to the right place.