

Frank Stanley
832.419.4565
stanley@dhrp.us

CHURCHILL PLACE

13453-13489 Blanco Rd | San Antonio, TX 78216



DRONE FOOTAGE
<https://youtu.be/9E9y9gzitk>

360° PANORAMIC VIEW
<https://kuula.co/post/5HGxK>

FOR LEASE



DRONE FOOTAGE

<https://youtu.be/9E9y9gzitk>

360° PANORAMIC VIEW

<https://kuula.co/post/5HGxK>

LEASE

Frank Stanley
832.419.4565
stanley@dhrp.us

CHURCHILL PLACE

13453-13489 Blanco Rd | San Antonio, TX 78216



HIGHLIGHTS

- Five minutes from Highway 281, Loop 1604 and Wurzbach Parkway
- Prominent Blanco Rd signage
- Surrounded by affluent neighborhoods
- Ample parking

LOCATION

North central San Antonio between Blanco/Wurzbach Pkwy intersection and Blanco/Bitters intersection.

DESCRIPTION

Churchill Place is a strategically located retail center surrounded by affluent neighborhoods with close proximity to Castle Hills, Shavano Park, and Hill Country Village. It offers excellent visibility and high traffic flow, making it ideal for businesses seeking a prominent presence.

BUILDING SIZE

±17,753 SF

LEASE TERMS

3+ Years, NNN

AVAILABLE SPACE

Suite 13453: ±2,300 SF
(Avail. Sep 1)

LAND SIZE

±1.82 AC

LEASE RATE

Contact Broker

Suite 13467: ±1,560 SF
(Avail. Sep 1)

Suite 13473: ±1,436 SF

ZONING

C-2

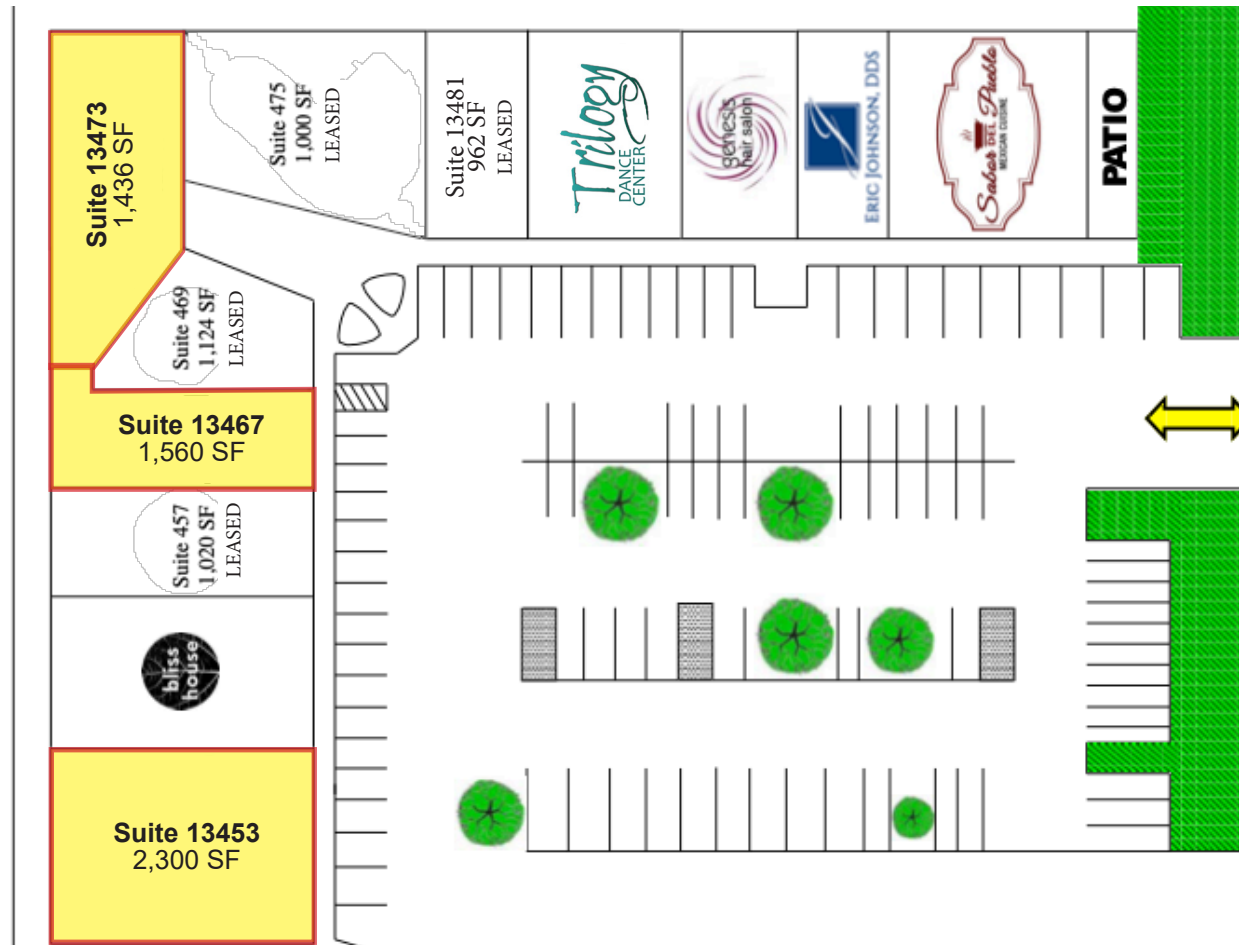
The information herein was obtained from sources deemed reliable; however, DH Realty Partners, Inc. makes no guarantees, warranties, or representations as to the completeness or accuracy thereof. The presentation of this property is submitted subject to errors, omissions, changes of price, prior to sale or lease, or withdrawal without notice. All floor plans, property lines, areas, and dimensions are approximate and for illustration purposes only. DHRP | DH Realty Partners, Inc. ©2025. A Texas Corporation.



CHURCHILL PLACE

13453-13489 Blanco Rd | San Antonio, TX 78216

SITE PLAN



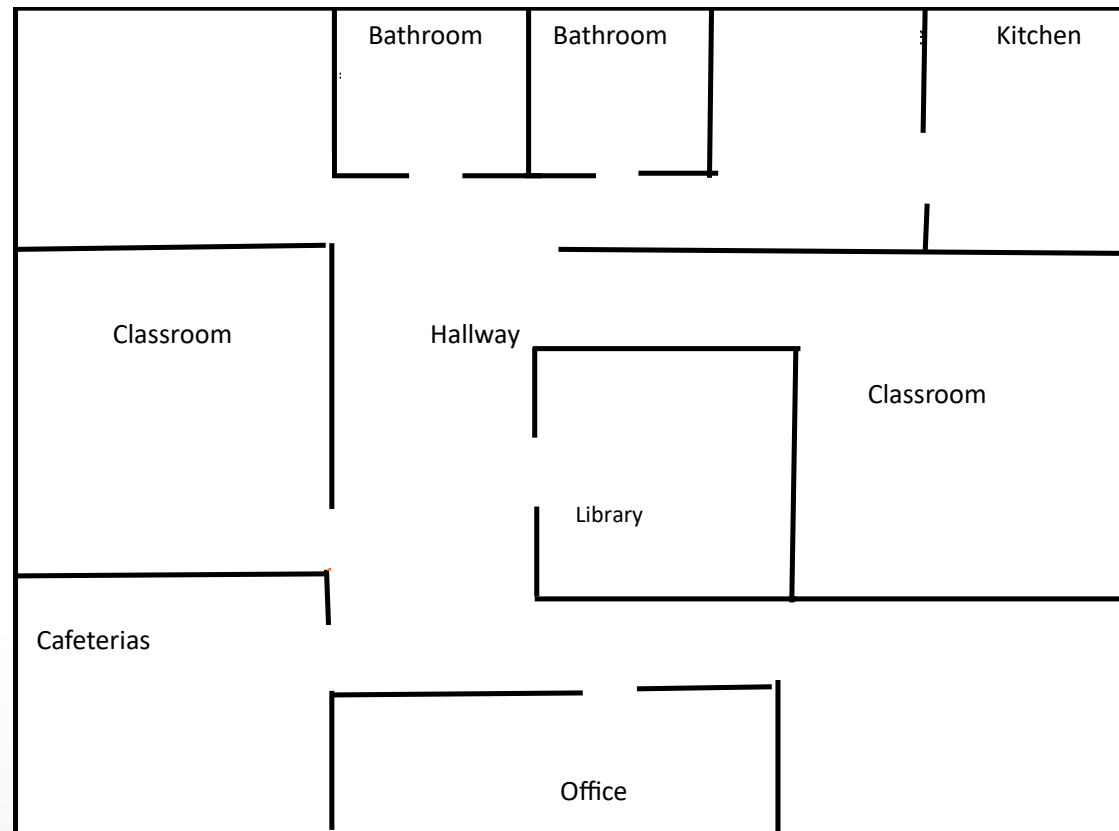
The information herein was obtained from sources deemed reliable; however, DH Realty Partners, Inc. makes no guarantees, warranties, or representations as to the completeness of accuracy thereof. The presentation of this property is submitted subject to errors, omissions, changes of price, prior to sale or lease, or withdrawal without notice. All Floor plans, property lines, areas, and dimensions are approximate and for illustration purposes only. DHRP | DH Realty Partners, Inc. ©2025. A Texas Corporation.



CHURCHILL PLACE

13453-13489 Blanco Rd | San Antonio, TX 78216

SUITE 13453 FLOOR PLAN



The information herein was obtained from sources deemed reliable; however, DH Realty Partners, Inc. makes no guarantees, warranties, or representations as to the completeness of accuracy thereof. The presentation of this property is submitted subject to errors, omissions, changes of price, prior to sale or lease, or withdrawal without notice. All Floor plans, property lines, areas, and dimensions are approximate and for illustration purposes only. DHRP | DH Realty Partners, Inc. ©2025. A Texas Corporation.



DRONE FOOTAGE

<https://youtu.be/9E9y9gzitk>

360° PANORAMIC VIEW

<https://kuula.co/post/5HGxK>

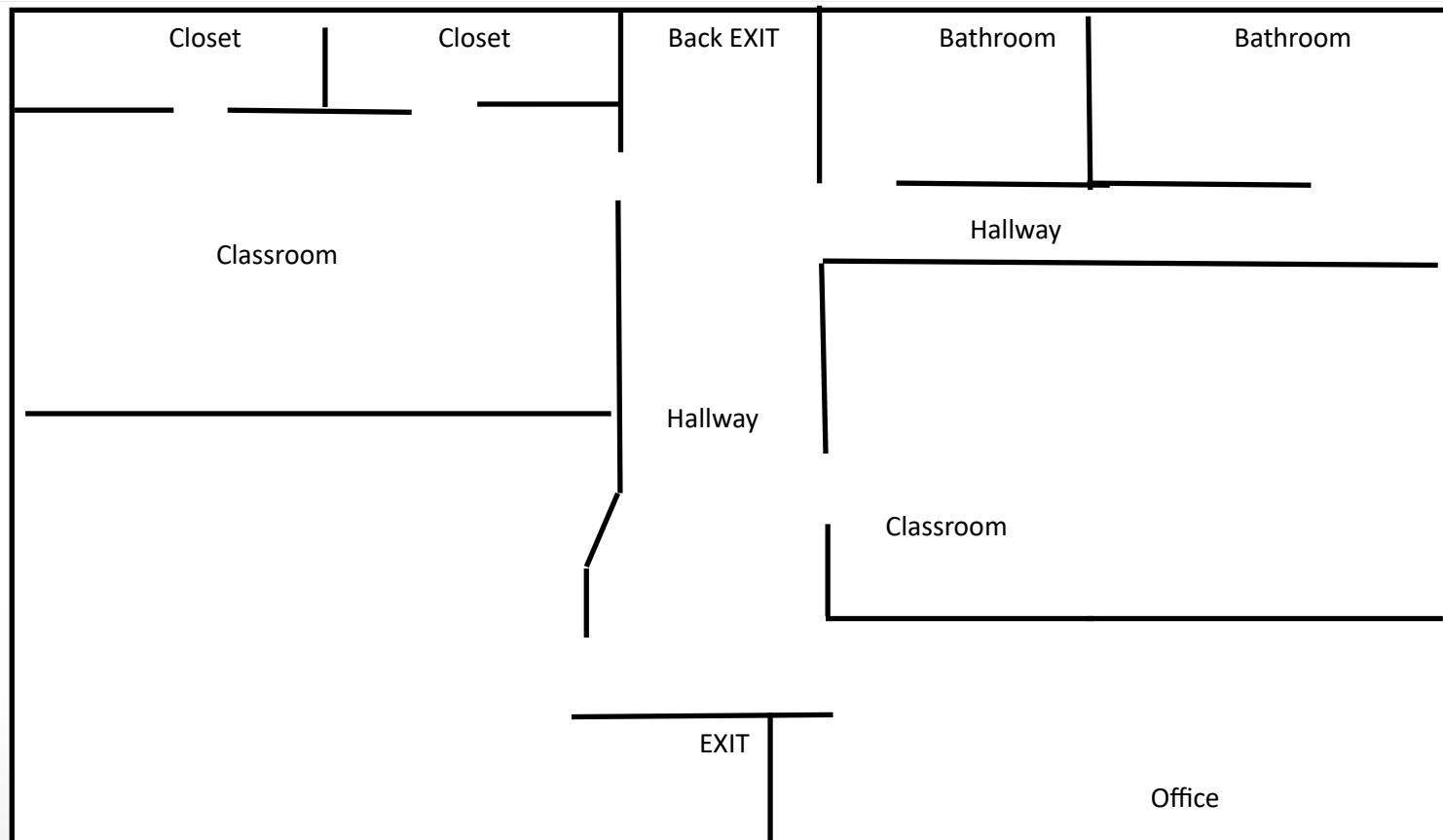
LEASE

Frank Stanley
832.419.4565
stanley@dhrp.us

CHURCHILL PLACE

13453-13489 Blanco Rd | San Antonio, TX 78216

SUITE 13467 FLOOR PLAN



The information herein was obtained from sources deemed reliable; however, DH Realty Partners, Inc. makes no guarantees, warranties, or representations as to the completeness of accuracy thereof. The presentation of this property is submitted subject to errors, omissions, changes of price, prior to sale or lease, or withdrawal without notice. All Floor plans, property lines, areas, and dimensions are approximate and for illustration purposes only. DHRP | DH Realty Partners, Inc. ©2025. A Texas Corporation.



CHURCHILL PLACE

13453-13489 Blanco Rd | San Antonio, TX 78216

PHOTOGRAPHY



The information herein was obtained from sources deemed reliable; however, DH Realty Partners, Inc. makes no guarantees, warranties, or representations as to the completeness of accuracy thereof. The presentation of this property is submitted subject to errors, omissions, changes of price, prior to sale or lease, or withdrawal without notice. All Floor plans, property lines, areas, and dimensions are approximate and for illustration purposes only. DHRP | DH Realty Partners, Inc. ©2025. A Texas Corporation.



DRONE FOOTAGE

<https://youtu.be/9E9y9gzitk>

360° PANORAMIC VIEW

<https://kuula.co/post/5HGxK>

LEASE

Frank Stanley
832.419.4565
stanley@dhrp.us

CHURCHILL PLACE

13453-13489 Blanco Rd | San Antonio, TX 78216

PHOTOGRAPHY



The information herein was obtained from sources deemed reliable; however, DH Realty Partners, Inc. makes no guarantees, warranties, or representations as to the completeness of accuracy thereof. The presentation of this property is submitted subject to errors, omissions, changes of price, prior to sale or lease, or withdrawal without notice. All Floor plans, property lines, areas, and dimensions are approximate and for illustration purposes only. DHRP | DH Realty Partners, Inc. ©2025. A Texas Corporation.



DRONE FOOTAGE

<https://youtu.be/9E9y9gzitk>

360° PANORAMIC VIEW

<https://kuula.co/post/5HGxK>

LEASE

Frank Stanley
832.419.4565
stanley@dhrp.us

CHURCHILL PLACE

13453-13489 Blanco Rd | San Antonio, TX 78216

PHOTOGRAPHY



The information herein was obtained from sources deemed reliable; however, DH Realty Partners, Inc. makes no guarantees, warranties, or representations as to the completeness of accuracy thereof. The presentation of this property is submitted subject to errors, omissions, changes of price, prior to sale or lease, or withdrawal without notice. All Floor plans, property lines, areas, and dimensions are approximate and for illustration purposes only. DHRP | DH Realty Partners, Inc. ©2025. A Texas Corporation.



DRONE FOOTAGE

<https://youtu.be/9E9y9gzitk>

360° PANORAMIC VIEW

<https://kuula.co/post/5HGxK>

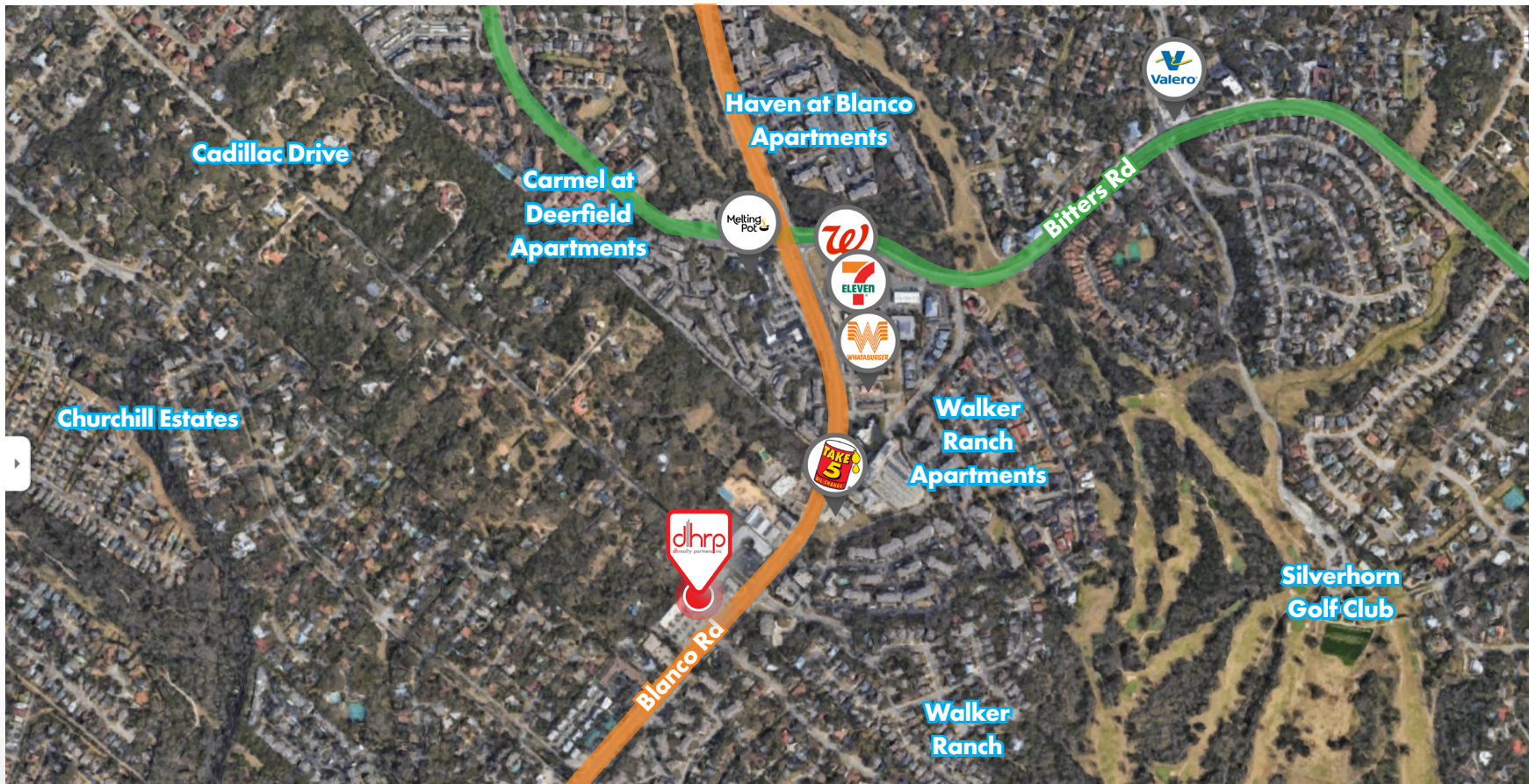
LEASE

Frank Stanley
832.419.4565
stanley@dhrp.us

CHURCHILL PLACE

13453-13489 Blanco Rd | San Antonio, TX 78216

AERIAL MAP



The information herein was obtained from sources deemed reliable; however, DH Realty Partners, Inc. makes no guarantees, warranties, or representations as to the completeness of accuracy thereof. The presentation of this property is submitted subject to errors, omissions, changes of price, prior to sale or lease, or withdrawal without notice. All Floor plans, property lines, areas, and dimensions are approximate and for illustration purposes only. DHRP | DH Realty Partners, Inc. ©2025. A Texas Corporation.



DRONE FOOTAGE

<https://youtu.be/9E9y9gzitk>

360° PANORAMIC VIEW

<https://kuula.co/post/5HGxK>

LEASE

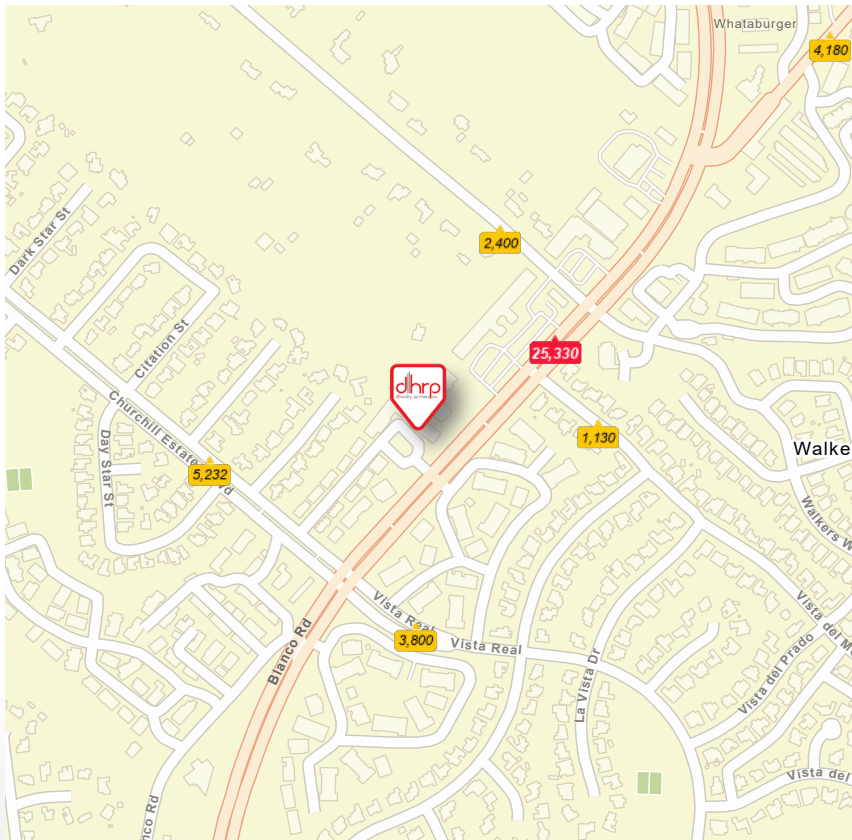
Frank Stanley
832.419.4565
stanley@dhrp.us

CHURCHILL PLACE

13453-13489 Blanco Rd | San Antonio, TX 78216

LOCATION INFORMATION

TRAFFIC COUNTS



DEMOGRAPHICS

| | 1 Mile | 3 Mile | 5 Mile |
|-------------------------|-----------|-----------|-----------|
| Population | 12,658 | 85,672 | 243,301 |
| Households | 6,029 | 39,073 | 109,926 |
| Avg Household Income | \$130,654 | \$139,000 | \$115,200 |
| Median Household Income | \$102,079 | \$99,358 | \$80,979 |

Source: ESRI, 2025



The information herein was obtained from sources deemed reliable; however, DH Realty Partners, Inc. makes no guarantees, warranties, or representations as to the completeness of accuracy thereof. The presentation of this property is submitted subject to errors, omissions, changes of price, prior to sale or lease, or withdrawal without notice. All Floor plans, property lines, areas, and dimensions are approximate and for illustration purposes only. DHRP | DH Realty Partners, Inc. ©2025. A Texas Corporation.



CHURCHILL PLACE

13453-13489 Blanco Rd | San Antonio, TX 78216

SAN ANTONIO MARKET OVERVIEW

San Antonio is aptly known as “Military City, USA” due to its pivotal role in supporting the nation’s defense. **Joint Base San Antonio (JBSA) is the largest military installation in the Department of Defense**, directly employing over 67,000 people and contributing an estimated \$55 billion to Texas’s economy. Brooke Army Medical Center (BAMC), located at JBSA, stands out as **the largest DoD medical facility and a Level I Trauma Center**, providing critical care to both military and civilian populations.

The city’s healthcare landscape is bolstered by the **900-acre South Texas Medical Center (STMC)**, home to hundreds of medical facilities and anchored by institutions like University Hospital, Methodist Healthcare, and UT Health.

As San Antonio’s second-largest employer, the STMC underscores the city’s strength in **healthcare and bioscience** industries.

San Antonio also boasts a thriving local economy, attracting businesses with its **central location, low taxes, and business-friendly policies**. Since 2018, over 100 companies have relocated to Texas from California, drawn by the city’s low cost of living and impressive wage growth. Key industries such as aerospace, IT, and cybersecurity continue to flourish, with the aerospace sector alone **employing over 46,000 professionals**. These factors highlight San Antonio’s sustained growth and its appeal as a hub for innovation, healthcare, and defense.

2.7M

TOTAL
POPULATION

7TH

LARGEST CITY
IN THE U.S.

9.8%

JOB GROWTH
2018-2023

15-20%

PROJECTED
POPULATION
GROWTH

14

ACCREDITED
UNIVERSITIES &
COLLEGES

60

NEW RESIDENTS
PER DAY

The information herein was obtained from sources deemed reliable; however, DH Realty Partners, Inc. makes no guarantees, warranties, or representations as to the completeness of accuracy thereof. The presentation of this property is submitted subject to errors, omissions, changes of price, prior to sale or lease, or withdrawal without notice. All Floor plans, property lines, areas, and dimensions are approximate and for illustration purposes only. DHRP | DH Realty Partners, Inc. ©2025. A Texas Corporation.

HAZARDOUS MATERIAL DISCLOSURE

Every purchaser, seller, landlord and/or tenant of any interest in real property ("Property") is notified that prior or current uses of the Property or adjacent properties may have resulted in hazardous or undesirable materials being located on the Property. These materials may not be visible or easily detected. Current or future laws may require removal or clean-up of areas containing these materials. In order to determine if hazardous or undesirable materials are present on the Property, expert inspections are necessary and removal or clean-up of these materials will require the services of experts. Real Estate Agents are not qualified experts.

If you are a seller or landlord, it is your responsibility to ensure that the transaction documents include disclosures and/or disclaimers that are appropriate for the transaction and the Property.

If you are a purchaser or tenant, it is your responsibility to ensure that the transaction documents include provisions to permit consultation with attorneys, environmental consultants and others to make prudent investigations, and further that such inspections are conducted.

ADA DISCLOSURE

In order to ensure that all business establishments are accessible to persons with a variety of disabilities, the Americans with Disabilities Act was enacted under federal law and there are also state and local laws that may require alterations to a Property in order to allow access. Texas has enacted the Architectural Barriers Removal Act to also accommodate persons with disabilities. Real Estate Agents are not qualified to advise you if the Property complies with these laws or what changes may be necessary. You should consult with attorneys, engineers and other experts to determine if the Property is in compliance with these laws.

FLOOD PLAIN INFORMATION DISCLOSURE

It is the sole responsibility of every purchaser, seller, landlord and/or tenant of any interest in Property to independently review the appropriate flood plain designation maps proposed and adopted by federal, state, and local resources including, but not limited to, the Federal Emergency Management Association ("FEMA") and the San Antonio River Authority ("SARA"), in order to determine the potential flood risk of their Property. Real Estate Agents are not qualified to assess and cannot warrant, guarantee, or make any representations about the flood risk of a particular piece of Property. All decisions made or actions taken or not taken by a purchaser, seller, landlord and/or tenant with respect to the flood risk of a particular piece of Property shall be the sole responsibility of such party.

The information herein was obtained from sources deemed reliable; however, DH Realty Partners, Inc. makes no guarantees, warranties, or representations as to the completeness of accuracy thereof. The presentation of this property is submitted subject to errors, omissions, changes of price, prior to sale or lease, or withdrawal without notice. All Floor plans, property lines, areas, and dimensions are approximate and for illustration purposes only. DHRP | DH Realty Partners, Inc. ©2025. A Texas Corporation.



Information About Brokerage Services

Texas law requires all real estate licensees to give the following information about brokerage services to prospective buyers, tenants, sellers and landlords.

11/2/2015

TYPES OF REAL ESTATE LICENSE HOLDERS:

- **A BROKER** is responsible for all brokerage activities, including acts performed by sales agents sponsored by the broker.
- **A SALES AGENT** must be sponsored by a broker and works with clients on behalf of the broker.

A BROKER'S MINIMUM DUTIES REQUIRED BY LAW (A client is the person or party that the broker represents):

- Put the interests of the client above all others, including the broker's own interests;
- Inform the client of any material information about the property or transaction received by the broker;
- Answer the client's questions and present any offer to or counter-offer from the client; and
- Treat all parties to a real estate transaction honestly and fairly.

A LICENSE HOLDER CAN REPRESENT A PARTY IN A REAL ESTATE TRANSACTION:

AS AGENT FOR OWNER (SELLER/LANDLORD): The broker becomes the property owner's agent through an agreement with the owner, usually in a written listing to sell or property management agreement. An owner's agent must perform the broker's minimum duties above and must inform the owner of any material information about the property or transaction known by the agent, including information disclosed to the agent or subagent by the buyer or buyer's agent.

AS AGENT FOR BUYER/TENANT: The broker becomes the buyer/tenant's agent by agreeing to represent the buyer, usually through a written representation agreement. A buyer's agent must perform the broker's minimum duties above and must inform the buyer of any material information about the property or transaction known by the agent, including information disclosed to the agent by the seller or seller's agent.

AS AGENT FOR BOTH - INTERMEDIARY: To act as an intermediary between the parties the broker must first obtain the written agreement of each party to the transaction. The written agreement must state who will pay the broker and, in conspicuous bold or underlined print, set forth the broker's obligations as an intermediary. A broker who acts as an intermediary:

- Must treat all parties to the transaction impartially and fairly;
- May, with the parties' written consent, appoint a different license holder associated with the broker to each party (owner and buyer) to communicate with, provide opinions and advice to, and carry out the instructions of each party to the transaction.
- Must not, unless specifically authorized in writing to do so by the party, disclose:
 - that the owner will accept a price less than the written asking price;
 - that the buyer/tenant will pay a price greater than the price submitted in a written offer; and
 - any confidential information or any other information that a party specifically instructs the broker in writing not to disclose, unless required to do so by law.

AS SUBAGENT: A license holder acts as a subagent when aiding a buyer in a transaction without an agreement to represent the buyer. A subagent can assist the buyer but does not represent the buyer and must place the interests of the owner first.

TO AVOID DISPUTES, ALL AGREEMENTS BETWEEN YOU AND A BROKER SHOULD BE IN WRITING AND CLEARLY ESTABLISH:

- The broker's duties and responsibilities to you, and your obligations under the representation agreement.
- Who will pay the broker for services provided to you, when payment will be made and how the payment will be calculated.

LICENSE HOLDER CONTACT INFORMATION: This notice is being provided for information purposes. It does not create an obligation for you to use the broker's services. Please acknowledge receipt of this notice below and retain a copy for your records.

| | | | |
|---|----------------------|------------------------------------|-----------------------------|
| <u>DH Realty Partners, Inc.</u> | <u>147342</u> | <u>www.dhrp.us</u> | <u>(210)222-2424</u> |
| Licensed Broker /Broker Firm Name or Primary Assumed Business Name | License No. | Email | Phone |
| <u>Daniel Briggs</u> | <u>311372</u> | <u>danielbriggs@dhrp.us</u> | <u>(210)222-2424</u> |
| Designated Broker of Firm | License No. | Email | Phone |
| <u>Frank Stanley</u> | <u>483569</u> | <u>stanley@dhrp.us</u> | <u>(361)303-3334</u> |
| Licensed Supervisor of Sales Agent/ Associate | License No. | Email | Phone |
| <u>Frank Stanley</u> | <u>483569</u> | <u>stanley@dhrp.us</u> | <u>(361)303-3334</u> |
| Sales Agent/Associate's Name | License No. | Email | Phone |

Buyer/Tenant/Seller/Landlord Initials

Date

Regulated by the Texas Real Estate Commission
TXR-2501

Information available at www.trec.texas.gov
IABS 1-0 Date

DH Realty Partners, Inc, 801 N Saint Marys St San Antonio, TX 78205

Phone: (210)222-2424

Fax: (210)271-0183

Untitled

Produced with Lone Wolf Transactions (zipForm Edition) 717 N Harwood St, Suite 2200, Dallas, TX 75201 www.lwolf.com