



LEE & ASSOCIATES
GREENVILLE/SPARTANBURG

Kevin Bentley, SIOR
EVP/Principal
864.444.1196
kbentley@lee-associates.com

Justin Bentley
Associate
864.449.1059
jbentley@lee-associates.com

864.704.1040
LeeUpstate.com

±9.27 AC WITH RAIL ACCESS FOR SALE

NPA Metric Road
Laurens, SC

Sale Price:
\$500,000

- ±9.27 Acres
- Just off Exit 9 Laurens County
- CSX Rail Access
- No Zoning



UTILITIES
POWER, WATER,
SEPTIC



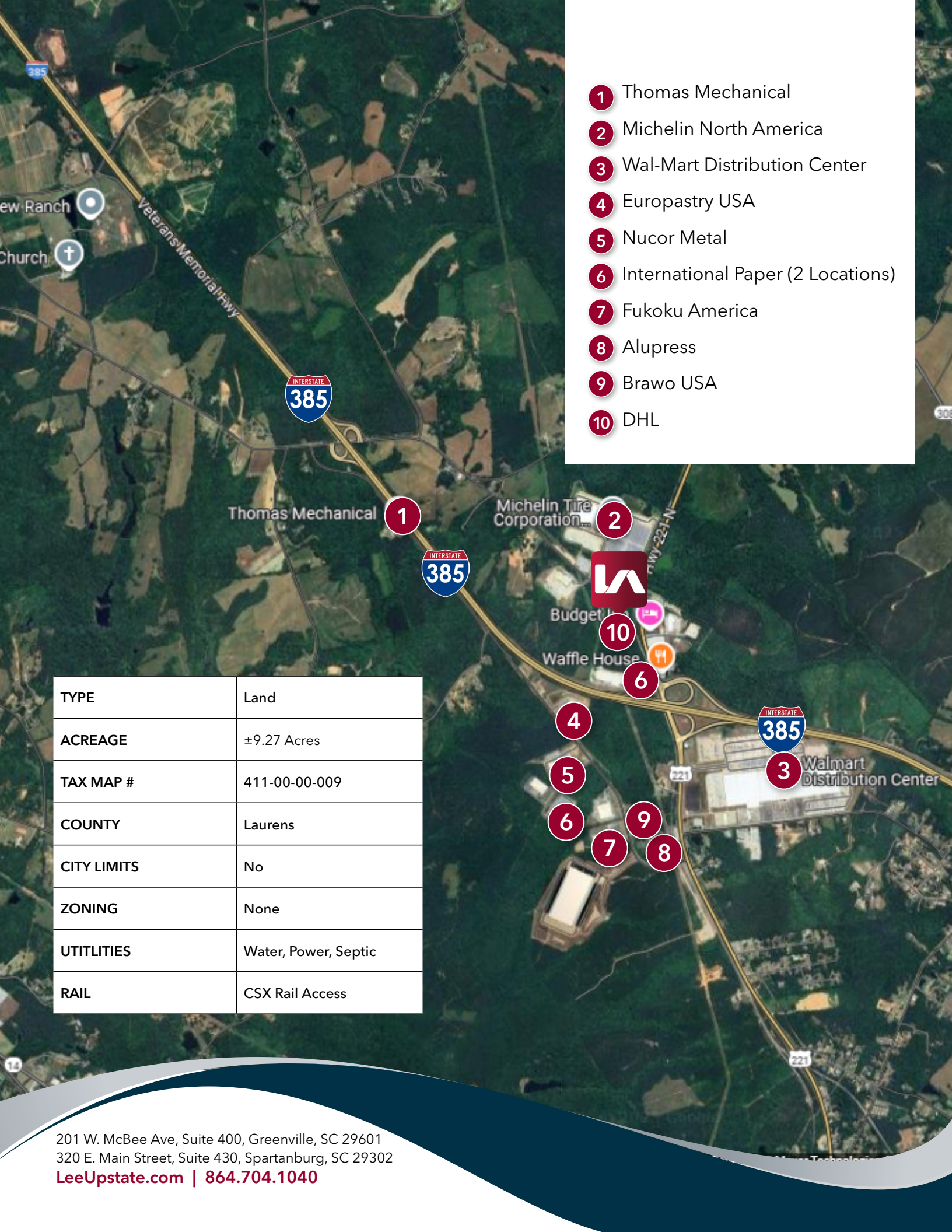
INTERSTATE ACCESS
±0.5 MILES TO I-385



TAX MAP #
411-00-00-009



RAIL ACCESS
CSX



- 1 Thomas Mechanical
- 2 Michelin North America
- 3 Wal-Mart Distribution Center
- 4 Europastry USA
- 5 Nucor Metal
- 6 International Paper (2 Locations)
- 7 Fukoku America
- 8 Alupress
- 9 Brawo USA
- 10 DHL

TYPE	Land
ACREAGE	±9.27 Acres
TAX MAP #	411-00-00-009
COUNTY	Laurens
CITY LIMITS	No
ZONING	None
UTILITIES	Water, Power, Septic
RAIL	CSX Rail Access



LEARN MORE GIVE US A CALL



LEE & ASSOCIATES
GREENVILLE/SPARTANBURG

864.704.1040
LeeUpstate.com

GREENVILLE OFFICE

201 W. McBee Ave, Suite 400
Greenville, SC 29601

SPARTANBURG OFFICE

320 E. Main Street, Suite 430
Spartanburg, SC 29302

All information furnished regarding the properties and information in this packet is from sources deemed reliable, but no warranty or representation is made to the accuracy thereof and same is submitted to errors, omissions, change of price, rental or other conditions prior to sale, lease or financing or withdrawal without notice. No liability of any kind is to be imposed on the broker herein.



Kevin Bentley, SIOR
EVP/Principal
864.444.1196
kbentley@lee-associates.com



Justin Bentley
Associate
864.449.1059
jbentley@lee-associates.com