



LIZ | 288
 288 N. BROAD ST.
 ELIZABETH, NJ 07208

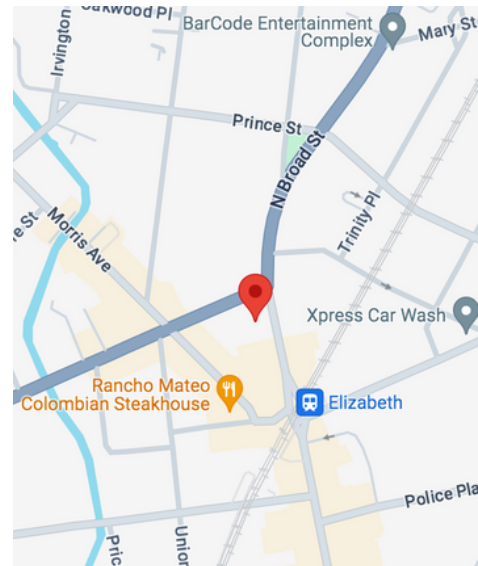


Medical | Professional Office Spaces For Lease



LISTING INFORMATION

- Liz 288 : Availability • 1226 - 4905 SF Units
- Liz 288 Building SF • 31,000 SF
- Liz 288 Features • 3-Story Free Standing
 • Elevator Building
 • Professional Tenants
- Liz 288 Amenities • 96 Parking Spaces
 • On-Site Security
 • Business Center



LIZ|288 : 288 N. Broad St, Elizabeth, NJ 07208

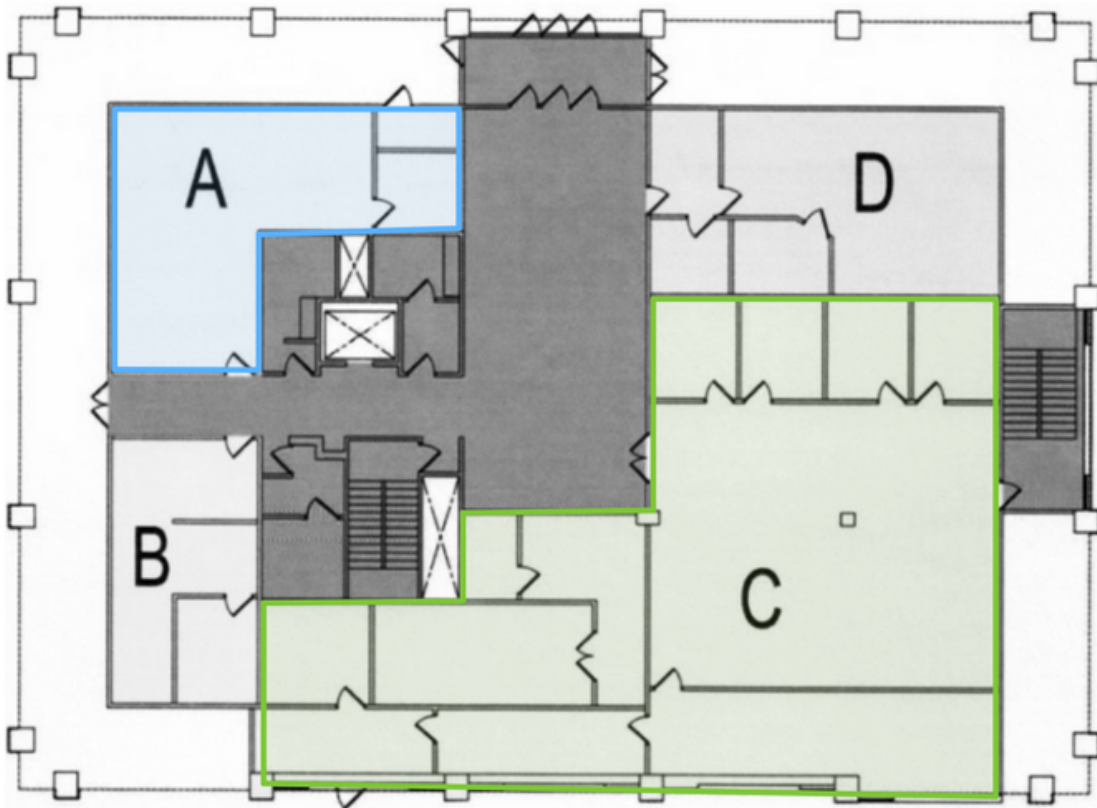
Contact: Tom Lee | 551-333-5832 | Liz288Building@gmail.com



LIZ | 288
288 N. BROAD ST.
ELIZABETH, NJ 07208



Medical | Professional Office Spaces For Lease



FIRST FLOOR PLAN: UNIT A 1,226 SF & UNIT C 4905 SF AVAILABLE

- Liz 288 Unit A Features -

Front Corner Visibility, Private Restroom, Private Entrance

- Liz 288 Unit C Features -

Previously Renovated Bank Space, 3-Lane Drive-Thru, Great Opportunity for Drive-Thru Business

- Liz 288 Building Amenities -

96 Parking Spaces, On-Site Security, 1 Block from Train Station, Elevator Building, Medical Tenants

LIZ|288 : 288 N. Broad St, Elizabeth, NJ 07208

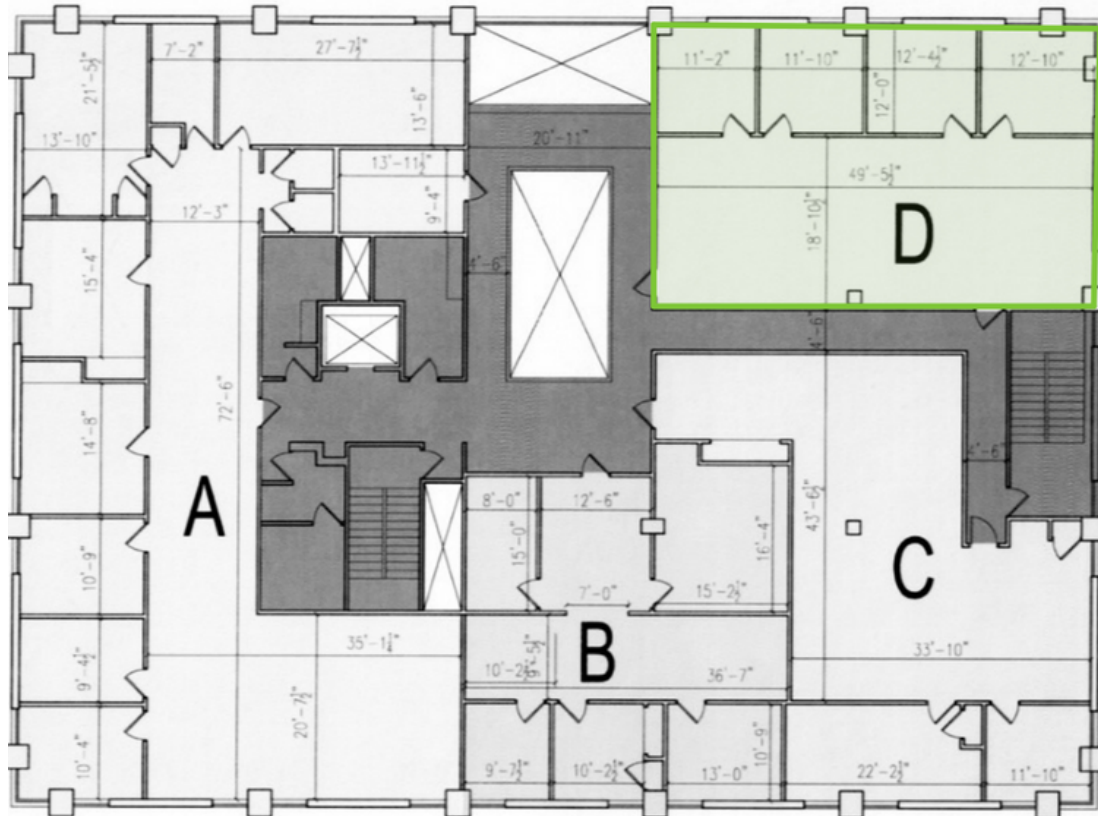
Contact: Tom Lee | 551-333-5832 | Liz288Building@gmail.com



LIZ | 288
 288 N. BROAD ST.
 ELIZABETH, NJ 07208



Medical | Professional Office Spaces For Lease



SECOND FLOOR PLAN: UNIT D 2,087 SF

- Liz 288 Unit D Features -
 Corner Exposure, Open Layout, Built Out Offices

- Liz 288 Building Amenities -
 96 Parking Spaces, On-Site Security, 1 Block from Train Station, Elevator Building, Medical Tenants

LIZ|288 : 288 N. Broad St, Elizabeth, NJ 07208

Contact: Tom Lee | 551-333-5832 | Liz288Building@gmail.com

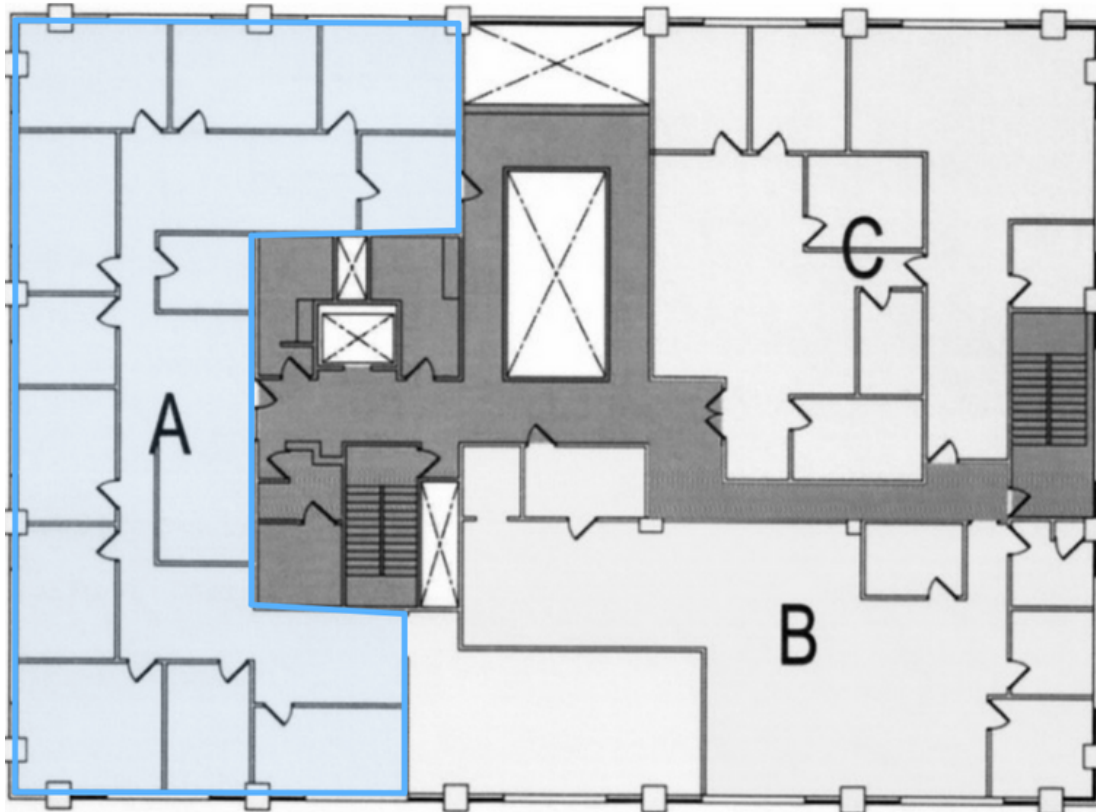
All information furnished regarding property for sale, rental, or financing is from sources deemed reliable, but no warranty or representation is made to the accuracy thereof and same is submitted subject to errors, omissions, changes of price, rental, or other conditions prior to sale, lease, or financing, or withdrawal without notice. No liability of any kind is to be imposed on the broker herein.



LIZ | 288
288 N. BROAD ST.
ELIZABETH, NJ 07208



Medical | Professional Office Spaces For Lease



THIRD FLOOR PLAN: UNIT A 4,000 SF

- Liz 288 Unit A Features -

Corner Exposure, Granite Receptionist Desk, Built Out Offices, Kitchenette Breakroom

- Liz 288 Building Amenities -

96 Parking Spaces, On-Site Security, 1 Block from Train Station, Elevator Building, Medical Tenants

LIZ|288 : 288 N. Broad St, Elizabeth, NJ 07208

Contact: Tom Lee | 551-333-5832 | Liz288Building@gmail.com