

# LONE PEAK CENTER 2



11781 LONE PEAK PARKWAY | SALT LAKE CITY, UTAH

## BUILDING FEATURES

- 46,239 RSF
- Adjacent to Central Park (“the Loop”) amenity
- 11,381 RSF Office space available

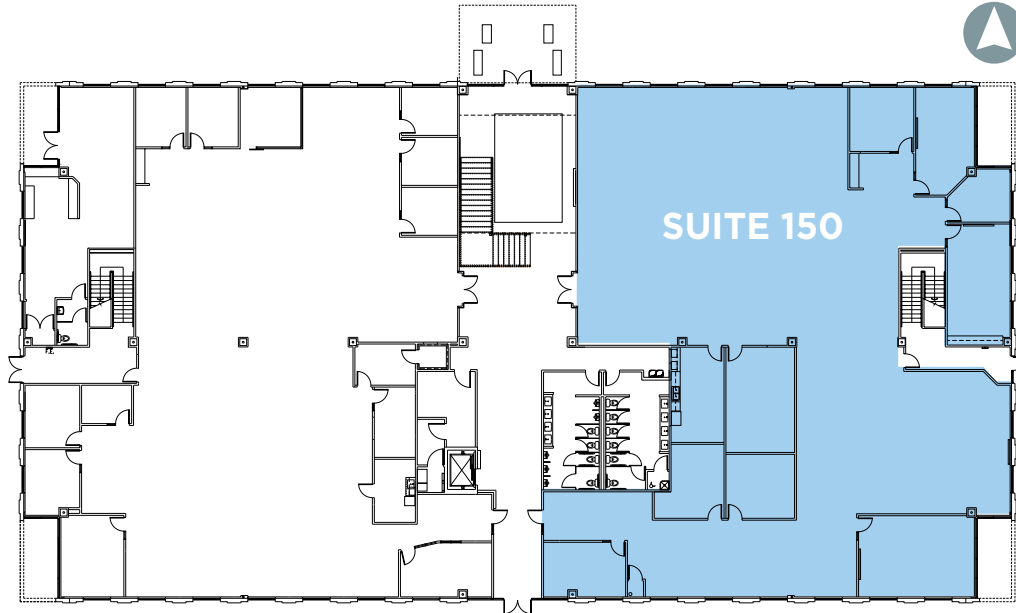


MAIER SIEBEL BABER



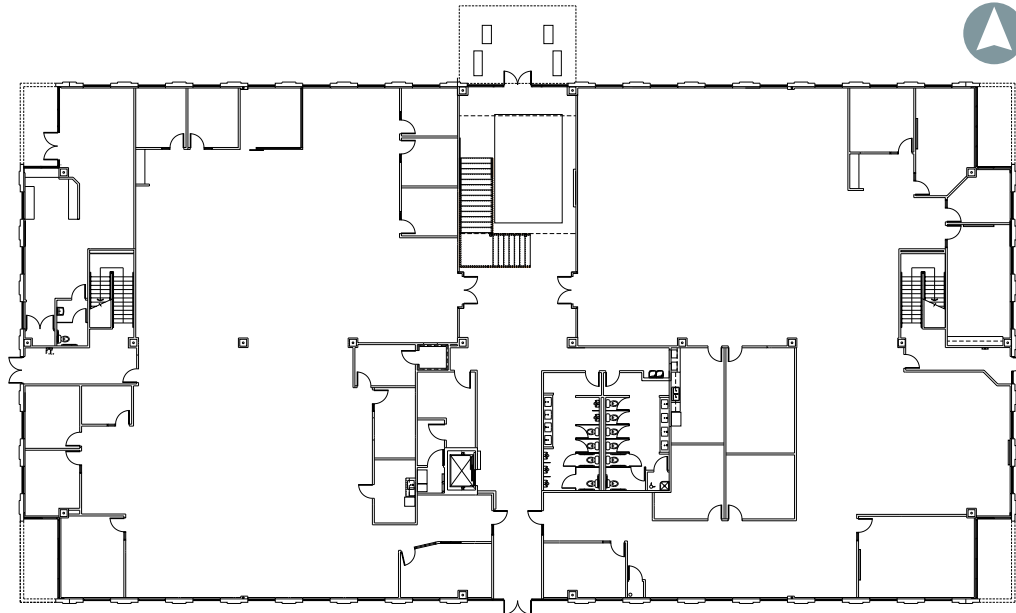
# LONE PEAK CENTER 2

## FIRST FLOOR



SUITE 150: 11,381 RSF

## SECOND FLOOR



FULLY LEASED

FOR LEASING INFORMATION, PLEASE CONTACT:

**DANA BAIRD, CCIM**  
Executive Managing Director  
(801) 303 5526  
dana.baird@cushwake.com

**MIKE RICHMOND**  
Executive Managing Director  
(801) 303 5434  
mike.richmond@cushwake.com

 **CUSHMAN & WAKEFIELD**  
MAIER SIEBEL BABER