

MULTI-PURPOSE SPACE**Available: 1,302 - 12,371 RSF****Sublease Rate: Negotiable****Property Highlights**

Sublease Rate	Negotiable, Contact Agent
Sublease Type	Full Service Excluding Janitorial
Available	1,302 - 12,371 RSF
Zoning	City-of-Boise-L-OD
Fire Suppression	Throughout
Location	Carrington College Campus in Boise
Parcel Number	R1097501691
Parking	Ample - On-Site Parking
Availability	Immediate, Move-In Ready
LockBox	No, Contact Agent for Tours, Please Do Not Disturb Carrington College

Jennifer McEntee
Senior Director
Office Specialist
+1 208 287 9495
jennifer.mcentee@cushwake.com

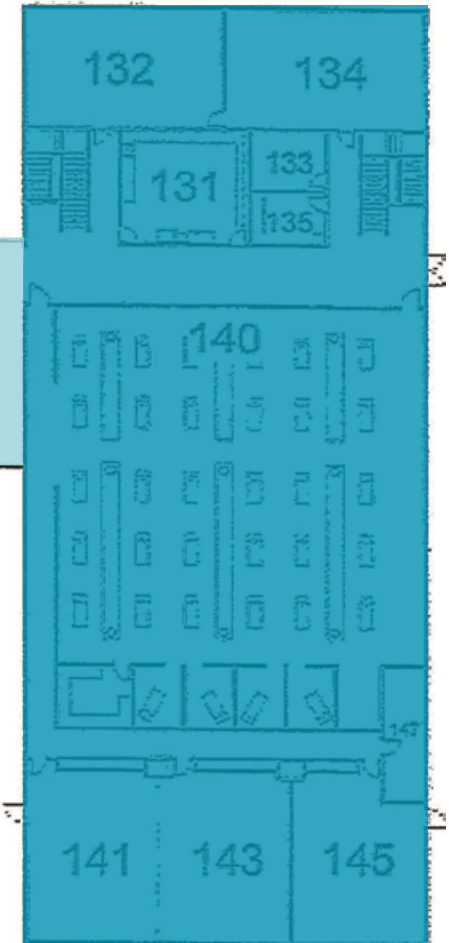
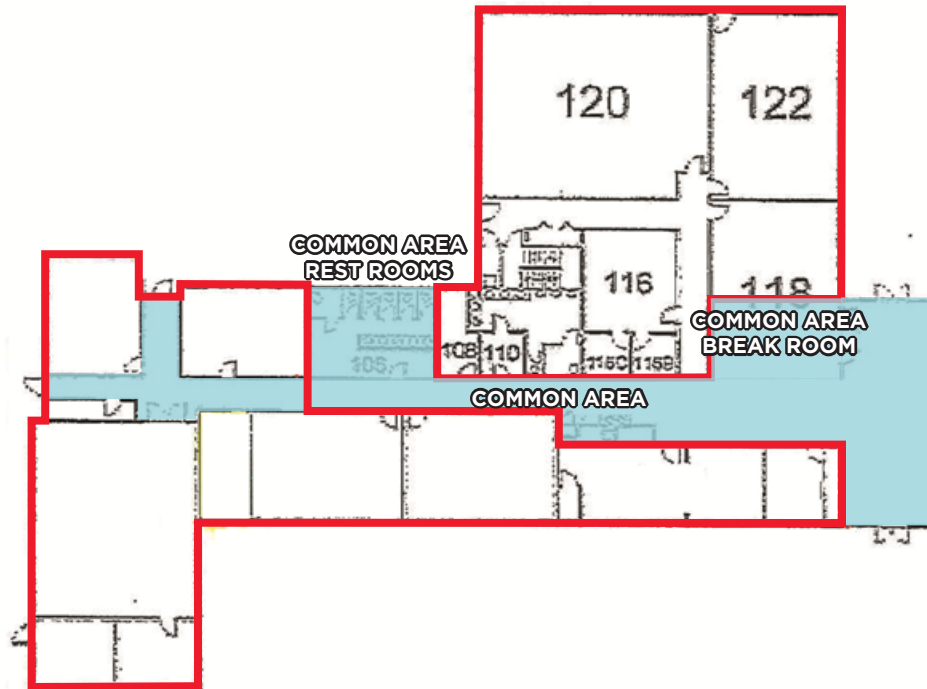
Bree Wells
Senior Associate
Office Specialist
+1 208 287 9492
bree.wells@cushwake.com

Listing Features

- Office / Special Purpose Space with Common Area Restrooms and more..., Available on the Carrington College Campus in Boise
- Amenities Include Fiber Internet Service, CAT 5 Cabling Throughout, Dedicated Server Room and Patch Panels In-place on Two I-Beam Racks
- Located Near the Intersection of North Liberty and West Fairview Avenue just Outside Downtown Boise
- Easily Accessible from Interstate 184 / Connector at Exit 2, Minutes from Downtown
- Directly North of the Saint Alphonsus Medical Campus
- Large Parking Area Provides Ample Space for Clients and Staff
- ***Please Do Not Disturb Carrington College, Contact Agent to Schedule a Walk Through Today!!***

999 West Main Street, Ste. 1300
Boise, Idaho 83702
Main +1 208 287 9500
Fax +1 208 287 9501
cushmanwakefield.com

Main Building - First Floor Plan - 6,489 SF Total - Sublease Rate Negotiable, Contact Agent

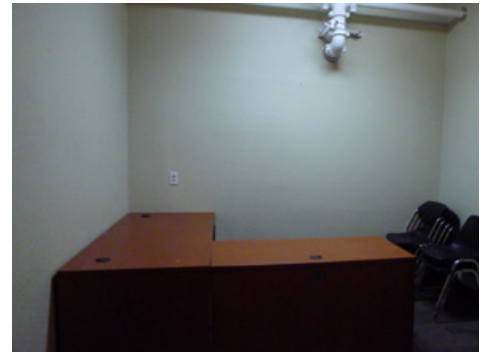
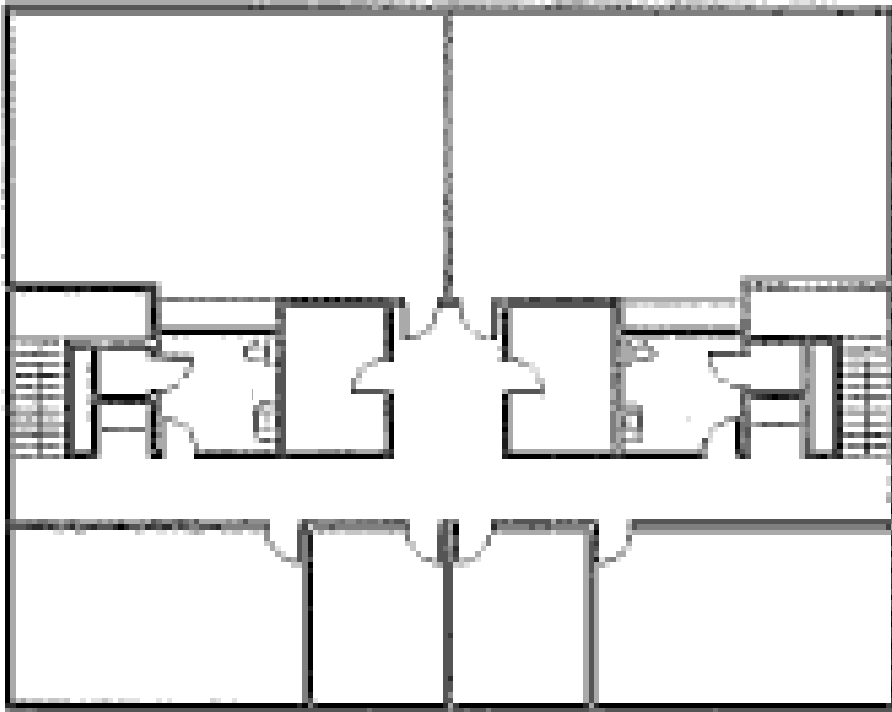


Jennifer McEntee
Senior Director
Office Specialist
+1 208 287 9495
jennifer.mcentee@cushwake.com

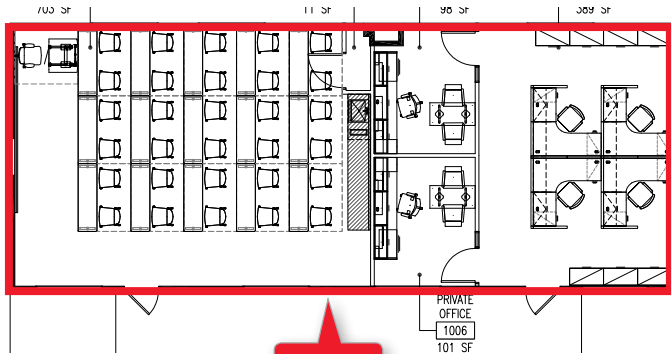
Bree Wells
Senior Associate
Office Specialist
+1 208 287 9492
bree.wells@cushwake.com

999 West Main Street, Ste. 1300
Boise, Idaho 83702
Main +1 208 287 9500
Fax +1 208 287 9501
cushmanwakefield.com

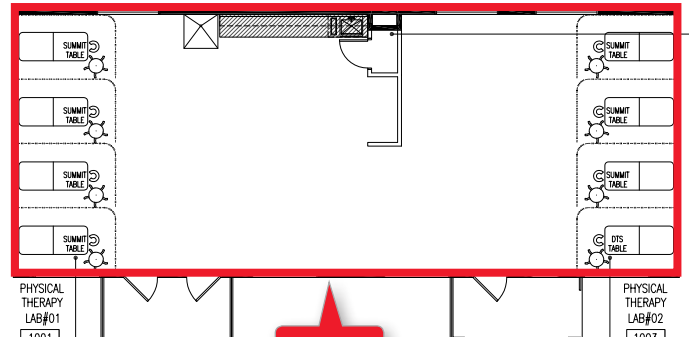
Main Building - Second Floor Plan - 3,134 SF Total - Sublease Rate Negotiable



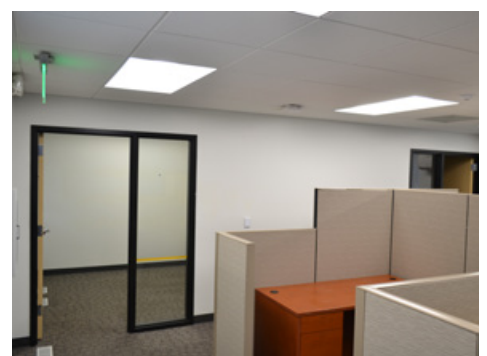
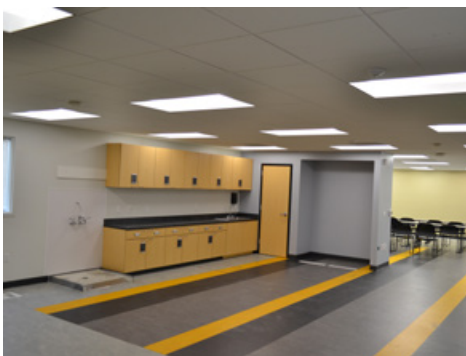
Two Small Out-Buildings - 1,374 SF Each - Sublease Rate Negotiable, Contact Agent



1,374

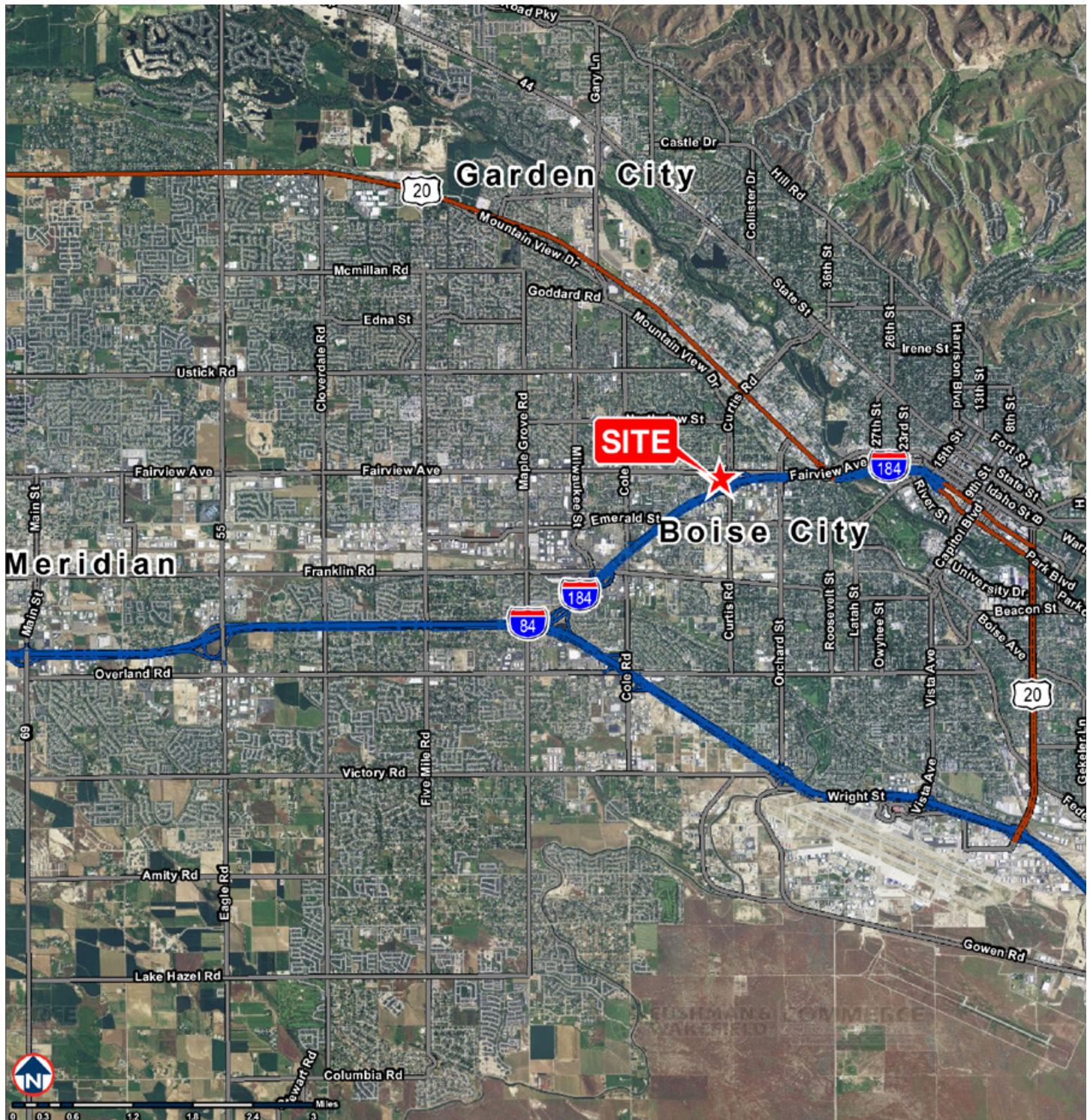


1,374



Office / Special Purpose Spaces

1122 North Liberty Street, Boise, Idaho 83704



Jennifer McEntee
Senior Director
Office Specialist
+1 208 287 9495
jennifer.mcentee@cushwake.com

Bree Wells
Senior Associate
Office Specialist
+1 208 287 9492
bree.wells@cushwake.com

999 West Main Street, Ste. 1300
Boise, Idaho 83702
Main +1 208 287 9500
Fax +1 208 287 9501
cushmanwakefield.com