



Office Space Available For Lease

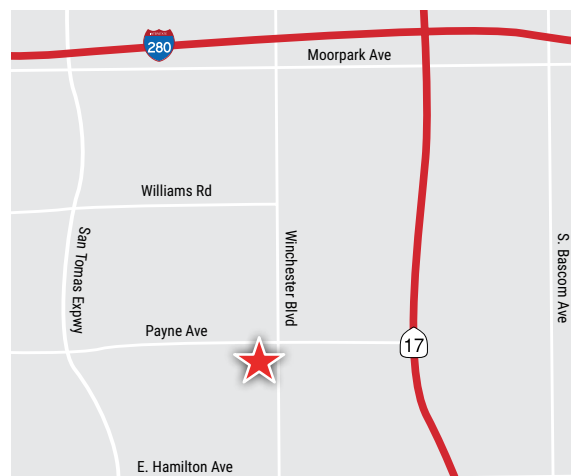
**1361 S WINCHESTER BLVD
SAN JOSE, CA**

Available Spaces

- Suite 200: ±995 rsf
- Suite 208: ±1,488 rsf

Property Highlights

- Walking distance to restaurants and amenities
- Easy access to Hwy 280, Hwy 17, and San Tomas Expy
- Garden setting with excellent windowline
- Local ownership
- Comcast and AT&T available
- 4/1000 parking ratio



For information, please contact:

Derek Yep

Managing Director

t 408-987-4106

derek.yep@nmrk.com

CA RE License #01476099

Tom Sweeney

Senior Managing Director

t 408-982-8493

thomas.sweeney@nmrk.com

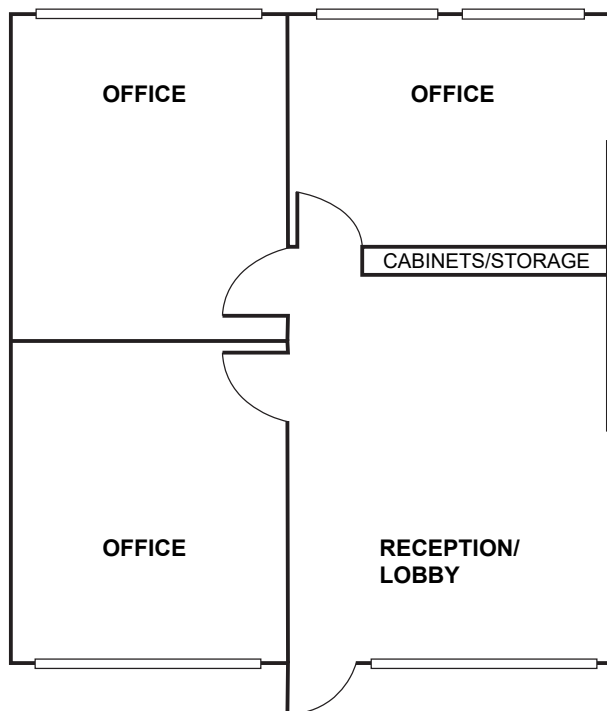
CA RE License #00989779

nmrk.com

NEWMARK

The distributor of this communication is performing acts for which a real estate license is required. The information contained herein has been obtained from sources deemed reliable but has not been verified and no guarantee, warranty or representation, either express or implied, is made with respect to such information. Terms of sale or lease and availability are subject to change or withdrawal without notice. MP-281 • 07/24

Floor Plan



Suite 200
±995 RSF

*These floor plans are not drawn to scale.

For information, please contact:

Derek Yep

Managing Director

t 408-987-4106

derek.yep@nmrk.com

CA RE License #01476099

Tom Sweeney

Senior Managing Director

t 408-982-8493

thomas.sweeney@nmrk.com

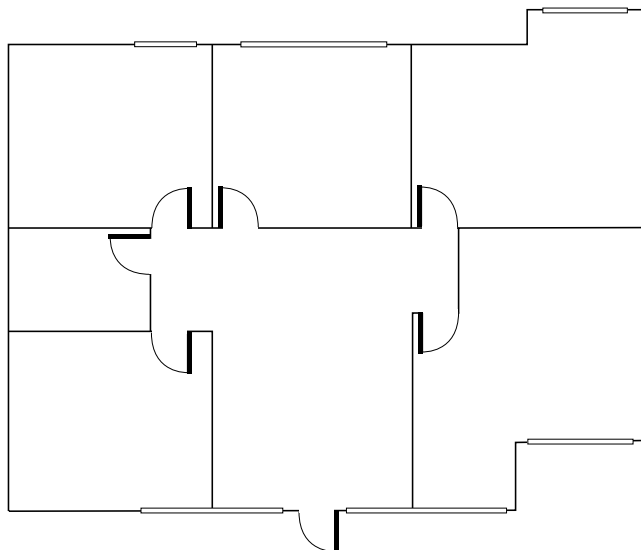
CA RE License #00989779

nmrk.com

NEWMARK

The distributor of this communication is performing acts for which a real estate license is required. The information contained herein has been obtained from sources deemed reliable but has not been verified and no guarantee, warranty or representation, either express or implied, is made with respect to such information. Terms of sale or lease and availability are subject to change or withdrawal without notice. MP-281 • 07/24

Floor Plan



Suite 208
±1,488 RSF



*These floor plans are not drawn to scale.

For information, please contact:

Derek Yep

Managing Director

t 408-987-4106

derek.yep@nmrk.com

CA RE License #01476099

Tom Sweeney

Senior Managing Director

t 408-982-8493

thomas.sweeney@nmrk.com

CA RE License #00989779

nmrk.com

NEWMARK

The distributor of this communication is performing acts for which a real estate license is required. The information contained herein has been obtained from sources deemed reliable but has not been verified and no guarantee, warranty or representation, either express or implied, is made with respect to such information. Terms of sale or lease and availability are subject to change or withdrawal without notice. MP-281 • 07/24

Gallery



For information, please contact:

Derek Yep

Managing Director

t 408-987-4106

derek.yep@nmrk.com

CA RE License #01476099

Tom Sweeney

Senior Managing Director

t 408-982-8493

thomas.sweeney@nmrk.com

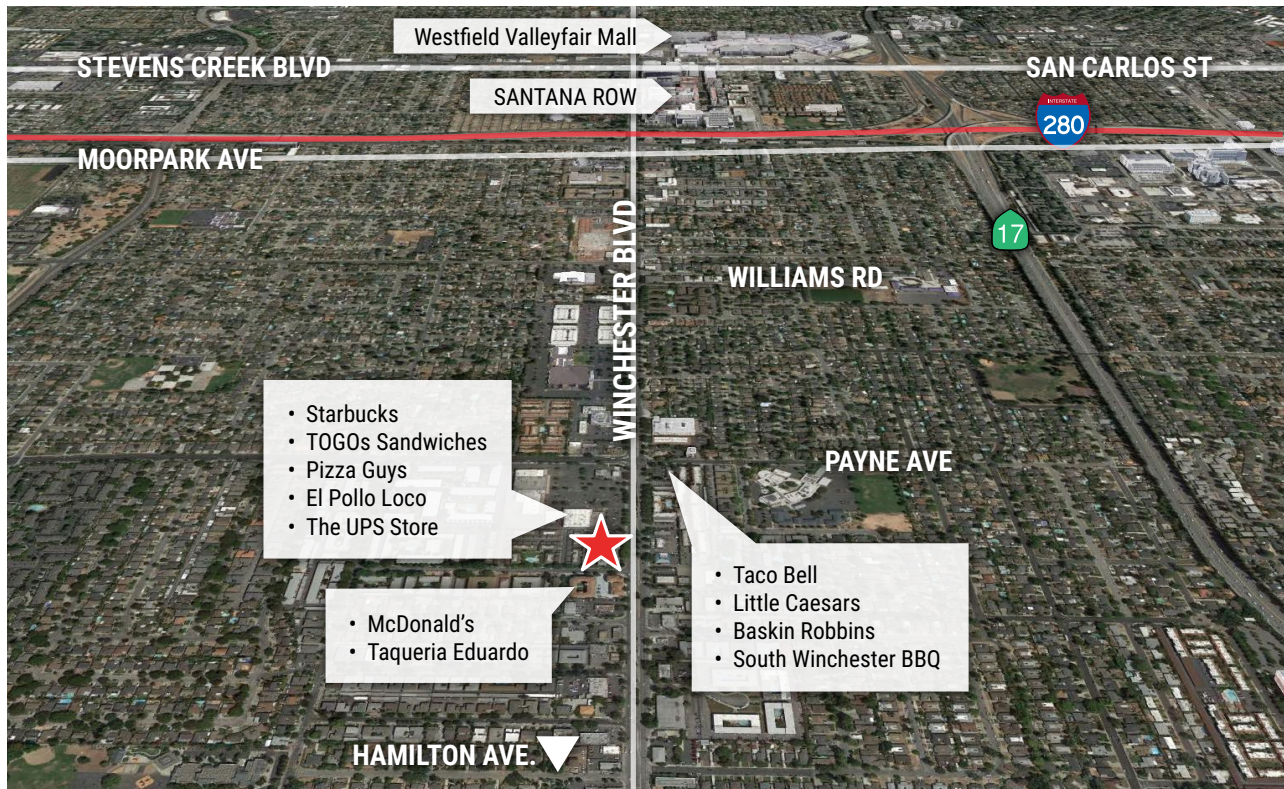
CA RE License #00989779

nmrk.com

NEWMARK

The distributor of this communication is performing acts for which a real estate license is required. The information contained herein has been obtained from sources deemed reliable but has not been verified and no guarantee, warranty or representation, either express or implied, is made with respect to such information. Terms of sale or lease and availability are subject to change or withdrawal without notice. MP-281 • 07/24

Amenities Map



For information, please contact:

Derek Yep

Managing Director

t 408-987-4106

derek.yep@nmrk.com

CA RE License #01476099

Tom Sweeney

Senior Managing Director

t 408-982-8493

thomas.sweeney@nmrk.com

CA RE License #00989779

nmrk.com

NEWMARK

The distributor of this communication is performing acts for which a real estate license is required. The information contained herein has been obtained from sources deemed reliable but has not been verified and no guarantee, warranty or representation, either express or implied, is made with respect to such information. Terms of sale or lease and availability are subject to change or withdrawal without notice. MP-281 • 07/24