



# MEDICAL OFFICE BUILDING FOR SALE

**311 E Evans Street, Orlando, FL 32804**

Contact: Trey Gravenstein E: [Trey@FCPG.com](mailto:Trey@FCPG.com)  
 Vice President of Brokerage Services P: 407.872.0177 ext 119

Contact: Michael Castrilli E: [Michael@FCPG.com](mailto:Michael@FCPG.com)  
 Vice President of Brokerage Services P: 407.872.0177 ext 130

**For Sale: \$1,550,000**

Full Building: ± 3,034 SF



**2ND GEN  
 MEDICAL  
 BUILDOUT**

Free-standing ±3,303 SF medical building with prominent monument signage

Strategically located adjacent to the AdventHealth Downtown Campus, within a medical corridor reinforced by AdventHealth's \$1+ billion, multi-phase expansion through 2030

Convenient access to I-4 and North Orange Ave, allowing easy connectivity for patients, staff, and referring providers

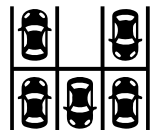
Strong 5/1,000 SF parking ratio, including 3 covered parking spaces

Second-generation medical space featuring 6 exam rooms, 3 physician offices, lab space, and employee break room

Well-suited for a variety of medical uses, including primary care, physical therapy, chiropractic, dental specialty, med spa, and behavioral health



**ADJACENT TO  
 ADVENTHEALTH  
 DOWNTOWN CAMPUS**



**5 / 1,000  
 PARKING RATIO**

■ 615 E. Colonial Drive, Orlando, FL 32803 ■ Phone: 407.872.0209 ■ [www.FCPG.com](http://www.FCPG.com) ■

Information furnished regarding the subject property is believed to be accurate, but no guarantee or representation is made. References to square footage are approximate. This offering is subject to errors, omissions, prior sale or lease or withdrawal without notice. ©2026 First Capital Property Group, Licensed Real Estate Brokers & Managers.

# LOCATION



**AVERAGE INCOME**  
\$140,523  
(5 min drive time)



**MEDIAN AGE**  
38.4  
(5 min drive time)



**AVERAGE HOUSEHOLD SIZE**  
1.91  
(5 min drive time)



**DAYTIME POPULATION**  
40,672  
(5 min drive time)



Total Population



Total Families



Total Households



Average Income



Total \$ Spent on Medical Care

5 mins

2025	12,870	2,885	6,673	\$140,523	\$20,349,349
2030	13,205	2,944	6,886	\$149,717	

10 mins

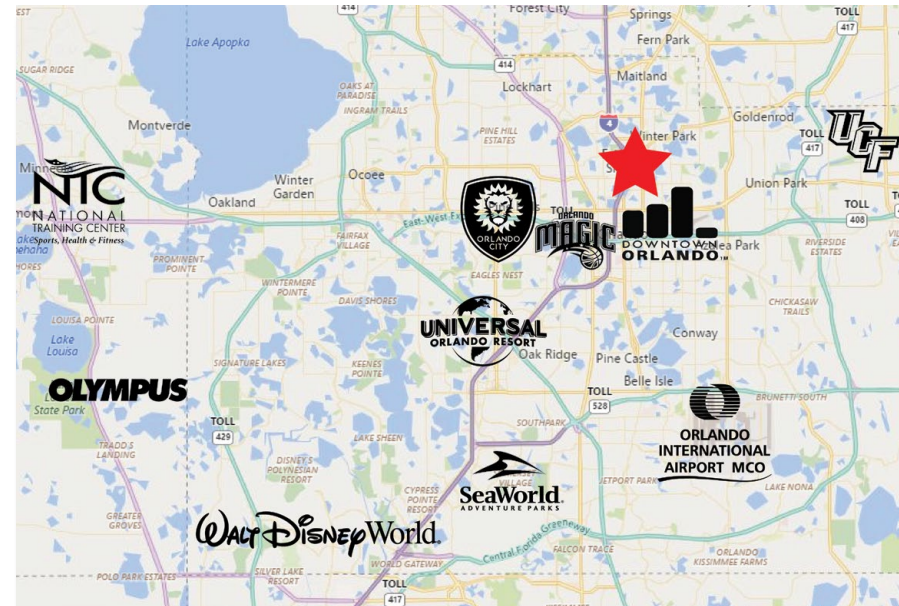
2025	71,024	15,195	34,506	\$133,136	\$101,305,456
2030	73,945	15,784	36,150	\$141,575	

15 mins

2025	319,282	72,963	138,534	\$112,798	\$354,434,512
2030	329,235	75,372	144,008	\$122,592	

## Nearest Hospitals & ERs

Hospital / ER	Miles
AdventHealth Orlando	0.6
AdventHealth Winter Park	3.8
Orlando Health Regional Medical Center	4.4
AdventHealth Altamonte Springs	8.3
AdventHealth East Orlando	10.4



615 E. Colonial Drive, Orlando, FL 32803 Phone: 407.872.0209 www.FCPG.com

Information furnished regarding the subject property is believed to be accurate, but no guarantee or representation is made. References to square footage are approximate. This offering is subject to errors, omissions, prior sale or lease or withdrawal without notice. ©2025 First Capital Property Group, Licensed Real Estate Brokers & Managers.



# NEIGHBORHOOD



■ 615 E. Colonial Drive, Orlando, FL 32803 ■ Phone: 407.872.0209 ■ [www.FCPG.com](http://www.FCPG.com) ■

Information furnished regarding the subject property is believed to be accurate, but no guarantee or representation is made. References to square footage are approximate. This offering is subject to errors, omissions, prior sale or lease or withdrawal without notice. ©2025 First Capital Property Group, Licensed Real Estate Brokers & Managers.



# FLOORPLAN

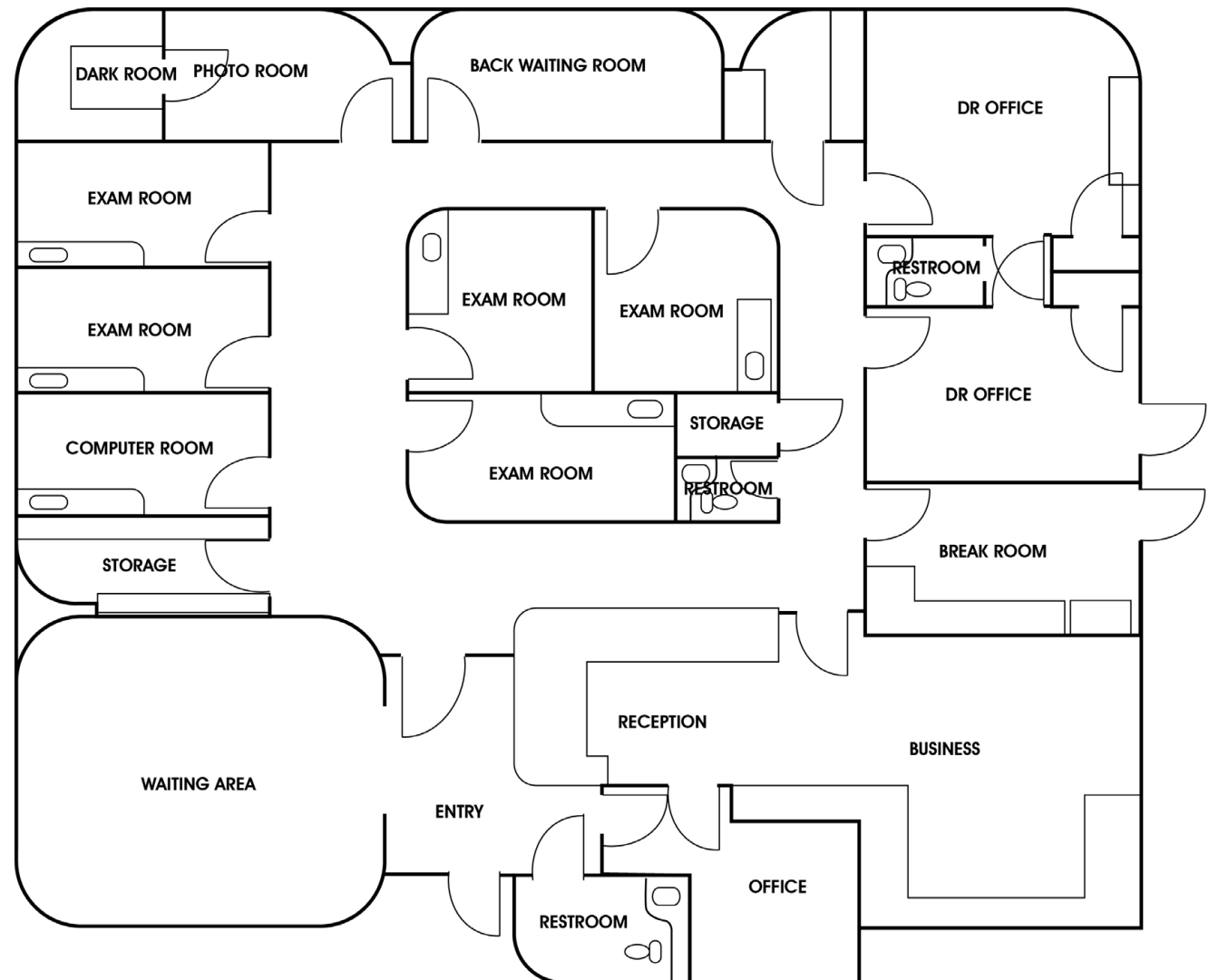


**TAKE A VIRTUAL TOUR  
VIA MATTERPORT**

Visit: <https://fcpbg.com/evans-st/>

## OFFICE LAYOUT

- 2 Waiting Rooms
- 5 Exam Rooms
- Multiple Storage Rooms
- 4 Restrooms
- Staff Breakroom
- 2 Private Physician Offices
- Photo & Dark Room



■ 615 E. Colonial Drive, Orlando, FL 32803 ■ Phone: 407.872.0209 ■ [www.FCPG.com](http://www.FCPG.com) ■

Information furnished regarding the subject property is believed to be accurate, but no guarantee or representation is made. References to square footage are approximate. This offering is subject to errors, omissions, prior sale or lease or withdrawal without notice. ©2025 First Capital Property Group, Licensed Real Estate Brokers & Managers.

# PICTURES



■ 615 E. Colonial Dr., Orlando, FL 32803 ■ Phone: 407.872.0209 ■ [www.FCPG.com](http://www.FCPG.com) ■

Information furnished regarding the subject property is believed to be accurate, but no guarantee or representation is made. References to square footage are approximate. This offering is subject to errors, omissions, prior sale or lease or withdrawal without notice. ©2025 First Capital Property Group, Licensed Real Estate Brokers & Managers.