

# FOR LEASE

## 2280 White Oak Circle

Aurora, Illinois 60502



Chris Mergenthaler  
Vice President  
+1 630 993 3862  
cmergenthaler@darwinpw.com

Tommy Engel  
Associate  
+1 630 993 3863  
tengel@darwinpw.com

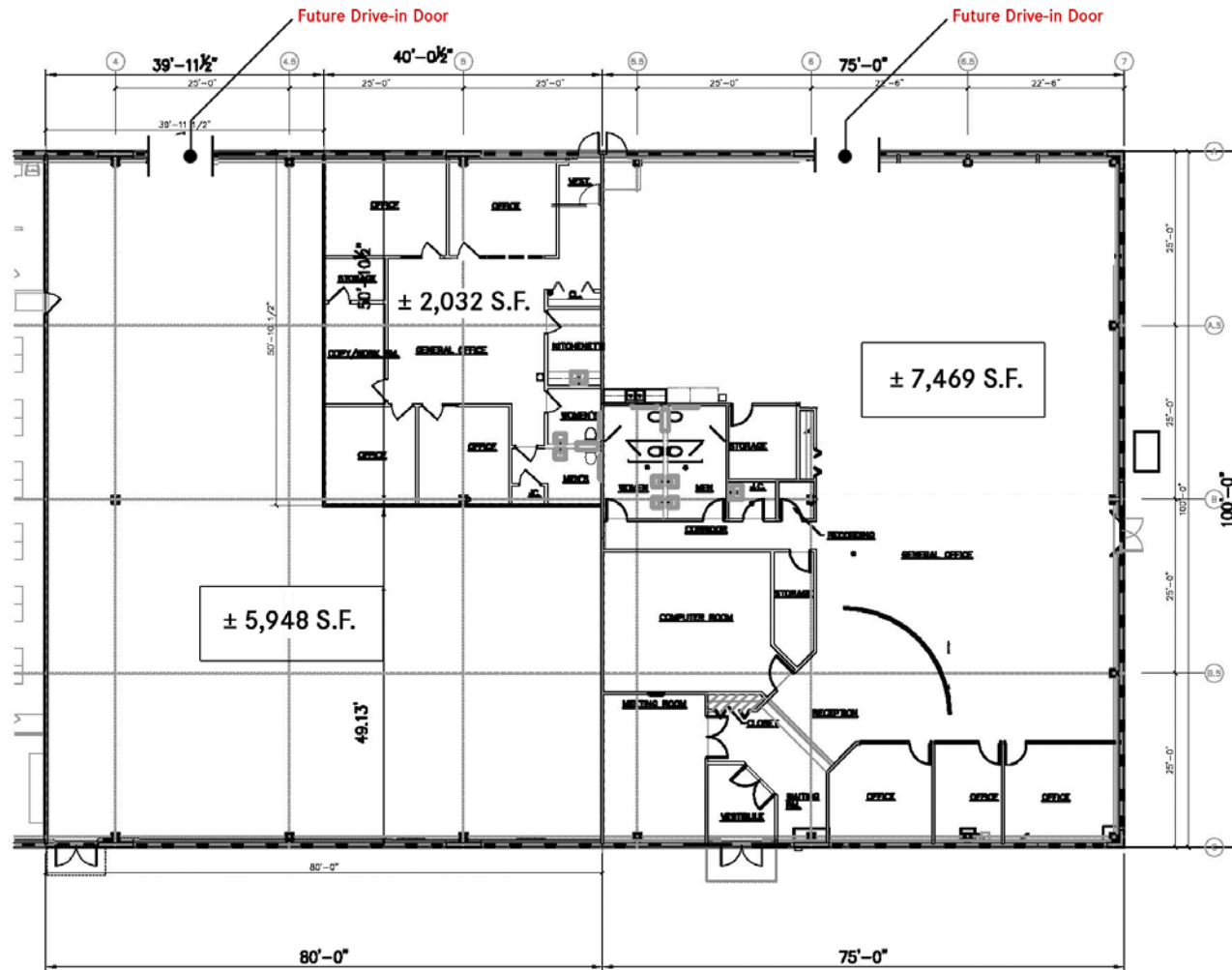
970 N Oaklawn Ave, Suite 100 | Elmhurst, IL 60126 | Tel: 630.782.9520 | [darwinpw.com](http://darwinpw.com)

*Submitted subject to error, change in status, or withdrawal without notice. | Officers of this firm have an ownership interest in this property.*



# 2280 White Oak Circle

Aurora, Illinois 60502



## Property Specifications

**Available SF:** 7,469 SF  
(5,948 SF available for dead storage/expansion)

**Office:** 3,000 SF

**Ceiling Height:** 19' Clear height

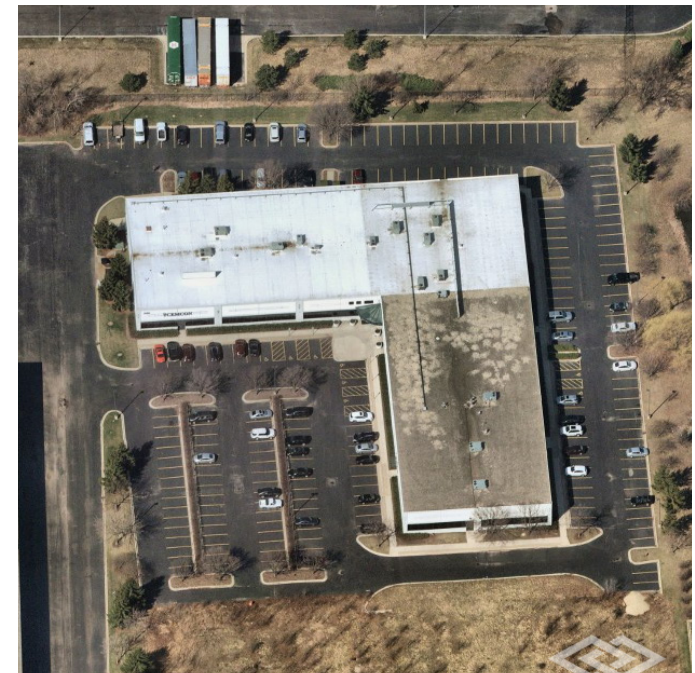
**Loading:** (1) 14' x 14' Drive-in door  
(expandable)

**Car Parking:** 45 Surface parking spots  
(expandable)

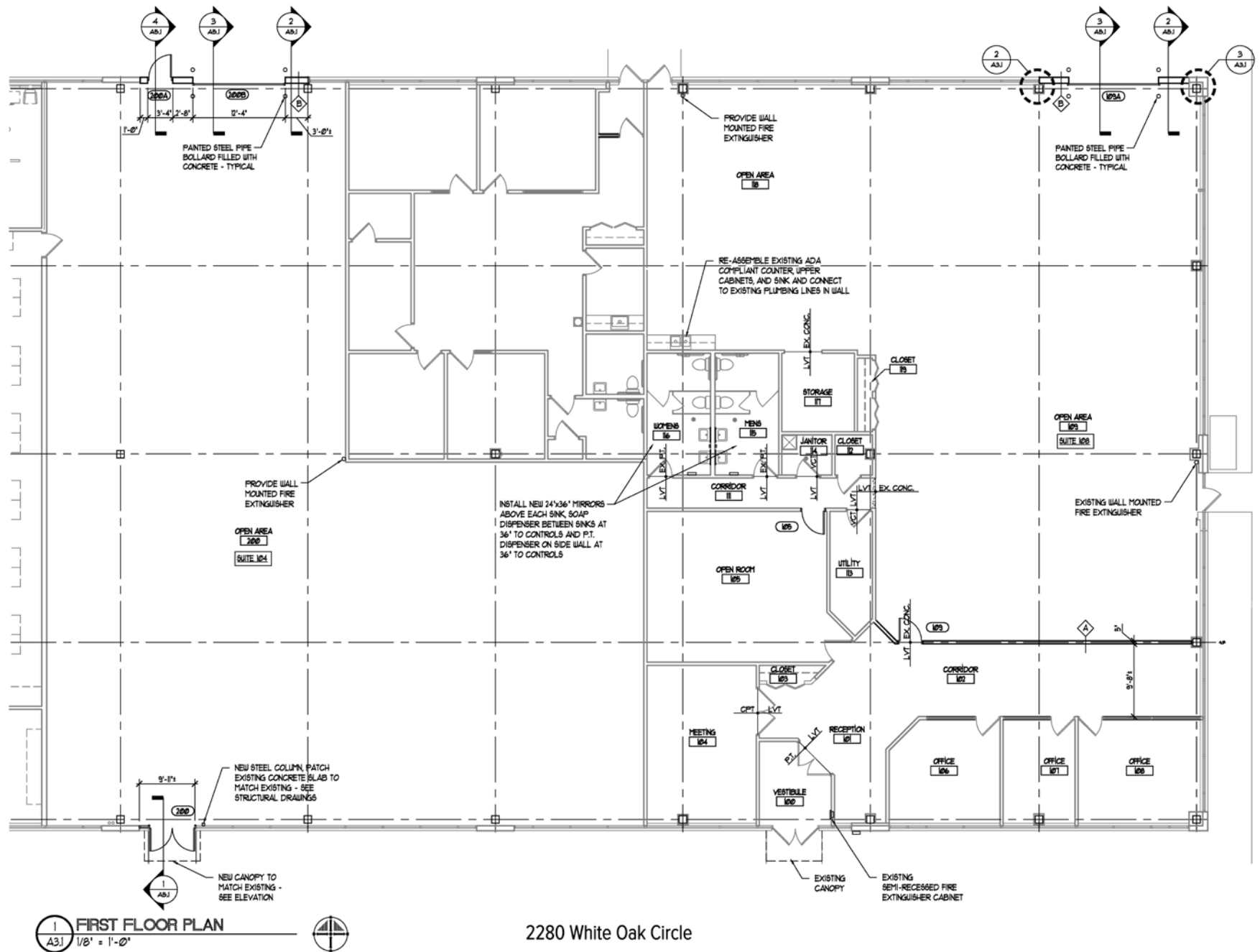
**HVAC:** Fully air-conditioned  
Warehouse

**Lease Rate:** Subject to Offer

**Available July 2025**



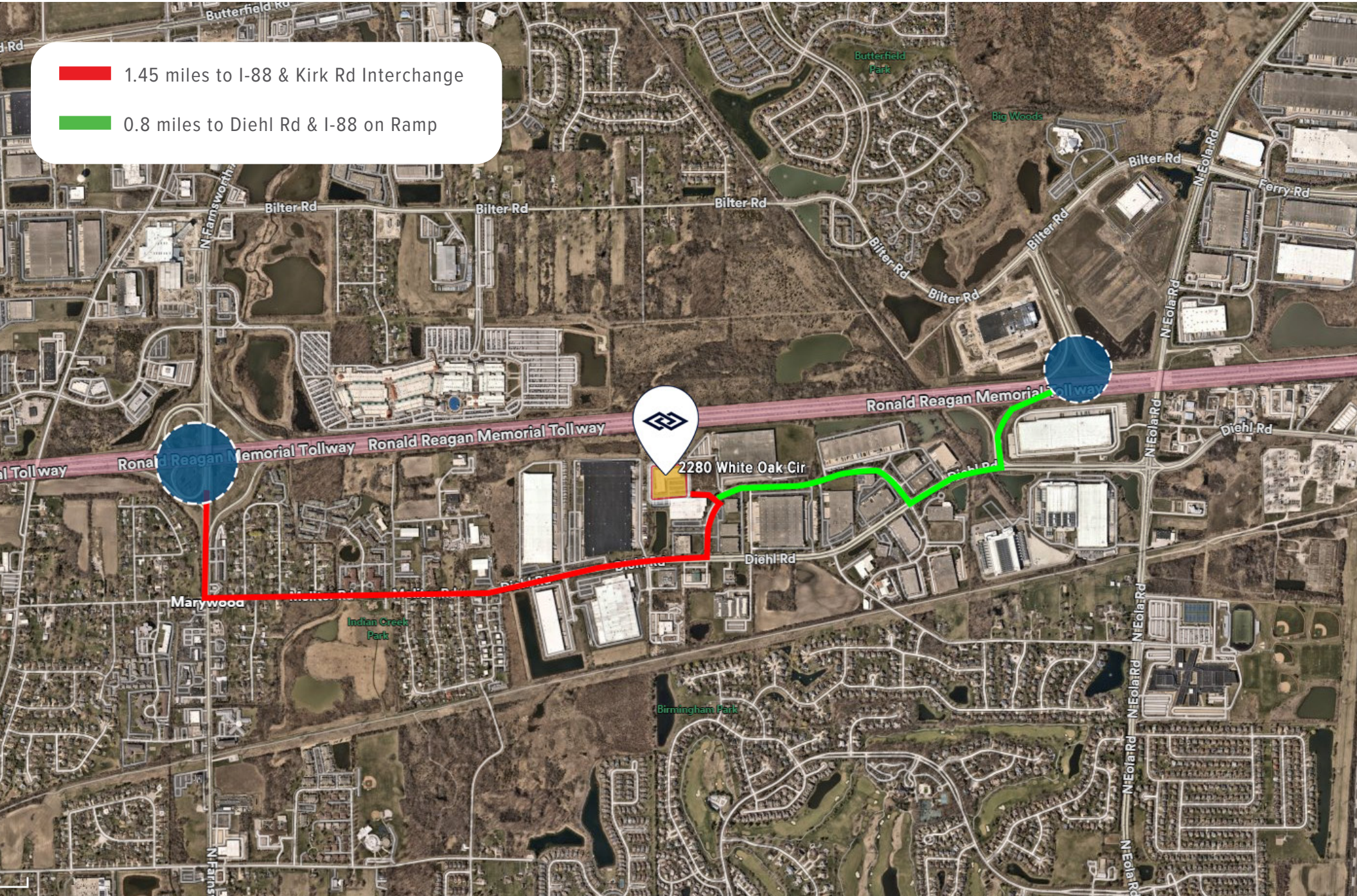
Aurora, Illinois 60502





Local Distances

2280 White Oak Circle  
Aurora, Illinois 60502







**DARWINPW**

R E A L T Y

---

CORFAC International