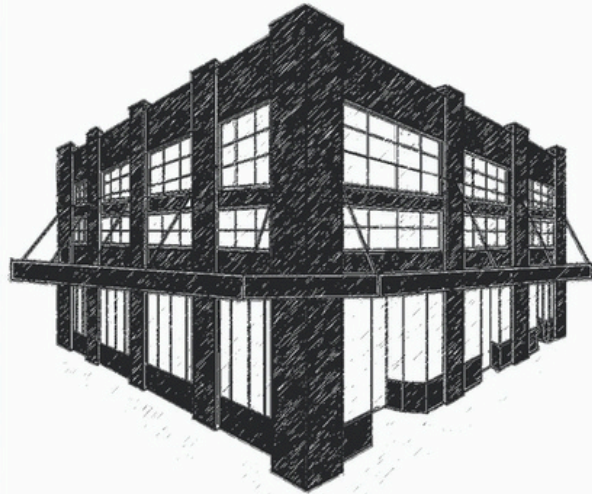




Suite 201



**MC CRORY  
TIMMERMAN**

The McCrory Timmerman Building  
Anchoring 2nd and Main in Downtown Taylor, Texas



2nd St. Station



La Scala

Good Strangers Coffee



Suites G & H

FOR LEASING INFORMATION:



**JULIE DOWNS**

512.497.3967 | 737.864.5330  
JULIEDOWNS4@GMAIL.COM

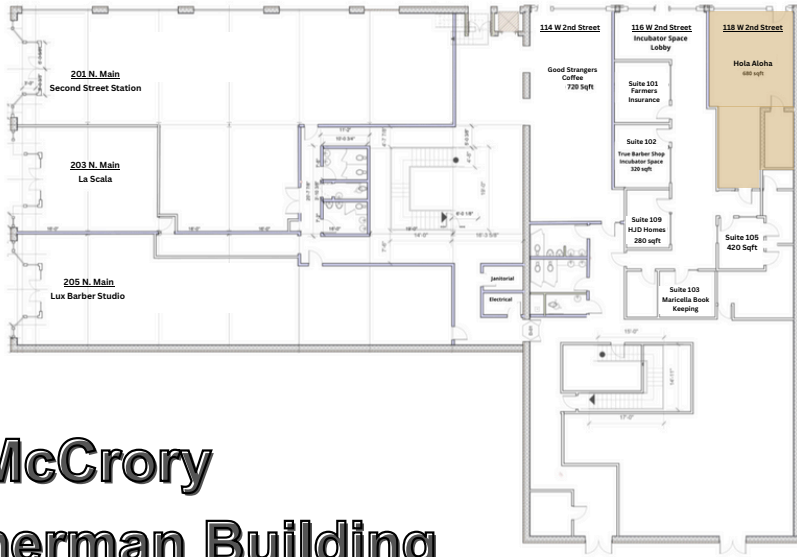
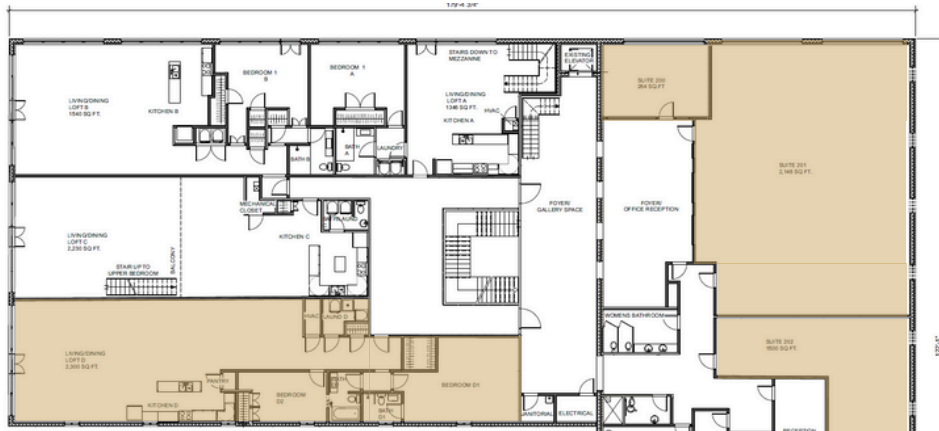
201 N MAIN ST  
TAYLOR, TX 76574

TIERRAGRANDESTATE.COM

**Available Space:**

- Loft D** | 2300 sqft
- Suite 200** | 764 sqft
- Suite 201** | 2148 sqft
- Suite 202** | 1500 sqft
- Suite 106** | 160 sqft
- Suite 205** | 1500 sqft
- Suite 203** | 1454 sqft
- 118 W. 2nd** | 680 sqft
- 116 W 2nd #106** | 420 sqft

● Denotes available space **Floor 1**



**Floor 2**

- Incubator Space
- Retail Space
- Premium Office Space
- Historic Restoration Project
- 90% occupied

# The McCrory Timmerman Building

## OUR STORY

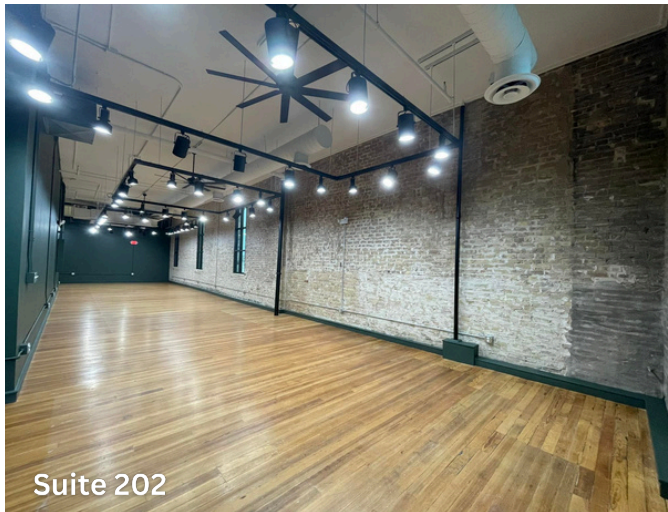
**AS RESIDENTS OF TAYLOR, WE HAVE A STRONG COMMITMENT TO THE COMMUNITY AND THE PEOPLE WHO LIVE HERE.**

The McCrory Timmerman Building is a landmark structure that mirrors the strength and character of generations of cotton farmers, merchants, tradesmen, and cattle ranchers who have made Central Texas their home. For one hundred twenty eight years, it has anchored the corner of Second and Main Streets downtown, and today, it welcomes new residents and businesses that are reviving a country town with a noble past.

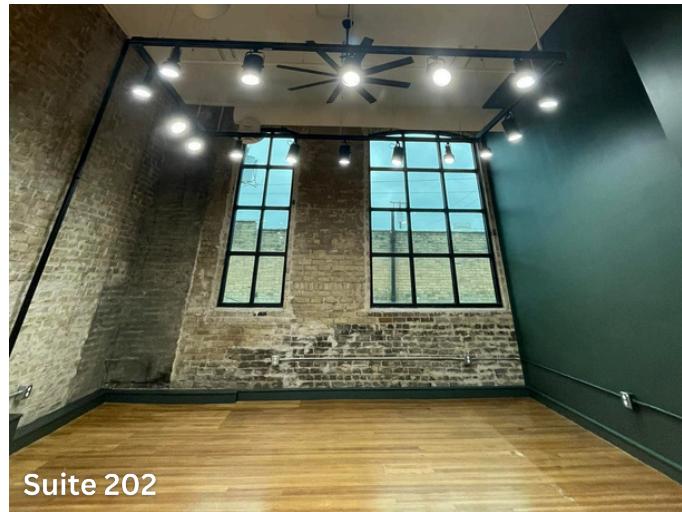


**Building Fact:**

The foundation of the building are bell footings which rest 10 feet beneath the ground level and the alley surface. They are 62" thick at their base and taper to 34" at ground level. The first floor wall thickness is 18-20" and the upper level 16".



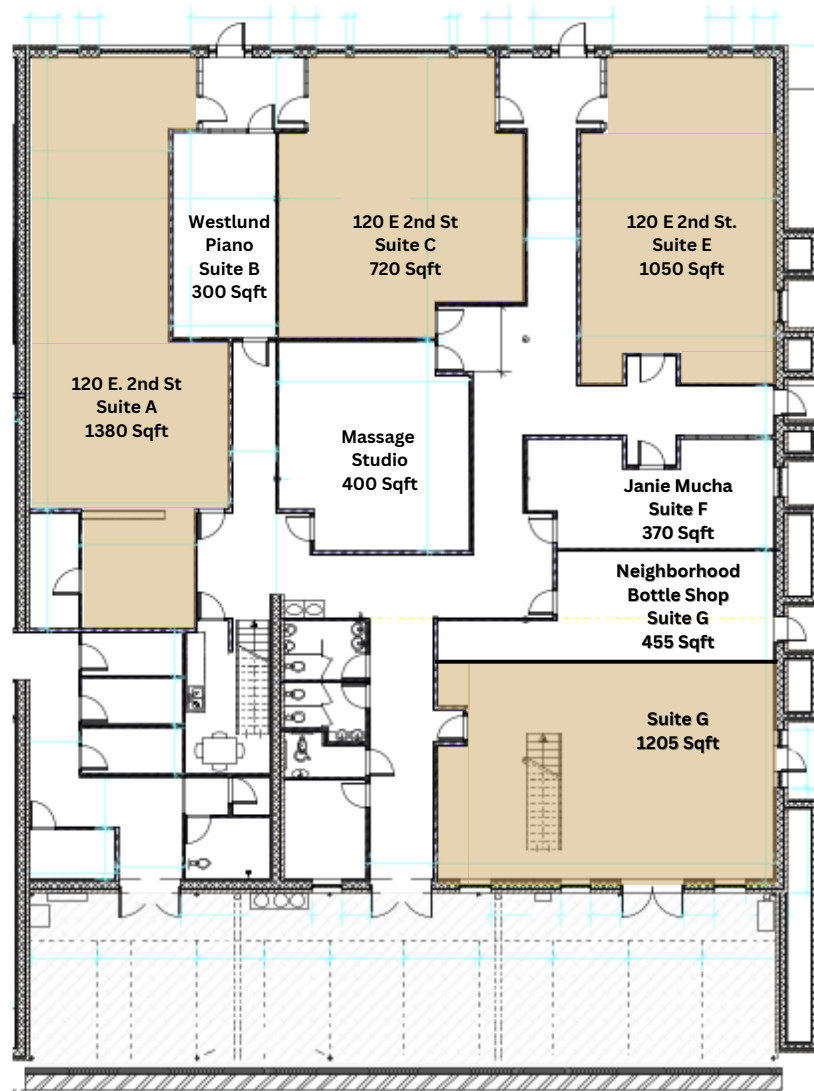
Suite 202



Suite 202

**Available Space:**  
**Suite A** | 1380 sqft  
**Suite C** | 764 sqft  
**Suite E** | 1050 sqft  
**Suite G** | 1205 Sqft

 Denotes available space



# The Titsworth Building



**FOR LEASING INFORMATION:**



**JULIE DOWNS**

512.497.3967 | 737.864.5330  
 JULIEDOWNS4@GMAIL.COM

