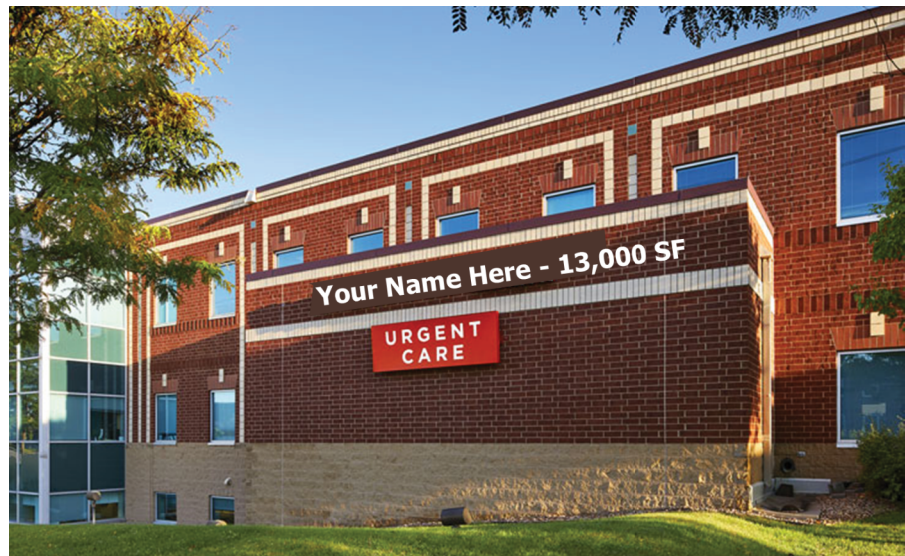


MEDICAL SPACE FOR LEASE

Roseville Medical Center

1835 County Road C, Roseville, MN 55113



MEDCRAFT HEALTHCARE REAL ESTATE | medcraft.com
Mike Fleetham | (952) 767-2842 | mfleetham@medcraft.com

MEDICAL SPACE FOR LEASE

Roseville Medical Center

1835 County Road C, Roseville, MN 55113

Building Information:

Address	1835 County Road C, Roseville, MN 55113
Total Building Square Footage	70,398
Number of Floors	3

Available Space

Maximum Contiguous Space Available	13,031 RSF
Smallest Space Available	1,823 RSF

Lease Terms:

Lease Term	Negotiable
Lower-Level Gross Rent	\$18.00/RSF Gross
Second Floor Annual Net Rent	\$22.50/RSF NNN
2025 Operating Cost Estimate	\$25.53/RSF Upper Floors

Amenities:

- Easily accessible with ample free parking
- Referral relationships among peers
- Ample surface parking

Specialties Include:

Dentistry	Lab
Dermatology	Pediatrics
ENT	Primary Care
Family Medicine	Rehabilitation
Heart & Vascular	Urgent Care
Imaging	Women's Health

For Leasing Information:

Mike Fleetham | (952) 767-2842 | MFleetham@MedCraft.com



FIRST LEVEL

AVAILABLE
Suite 140/150
13,031 RSF



MEDICAL SPACE FOR LEASE

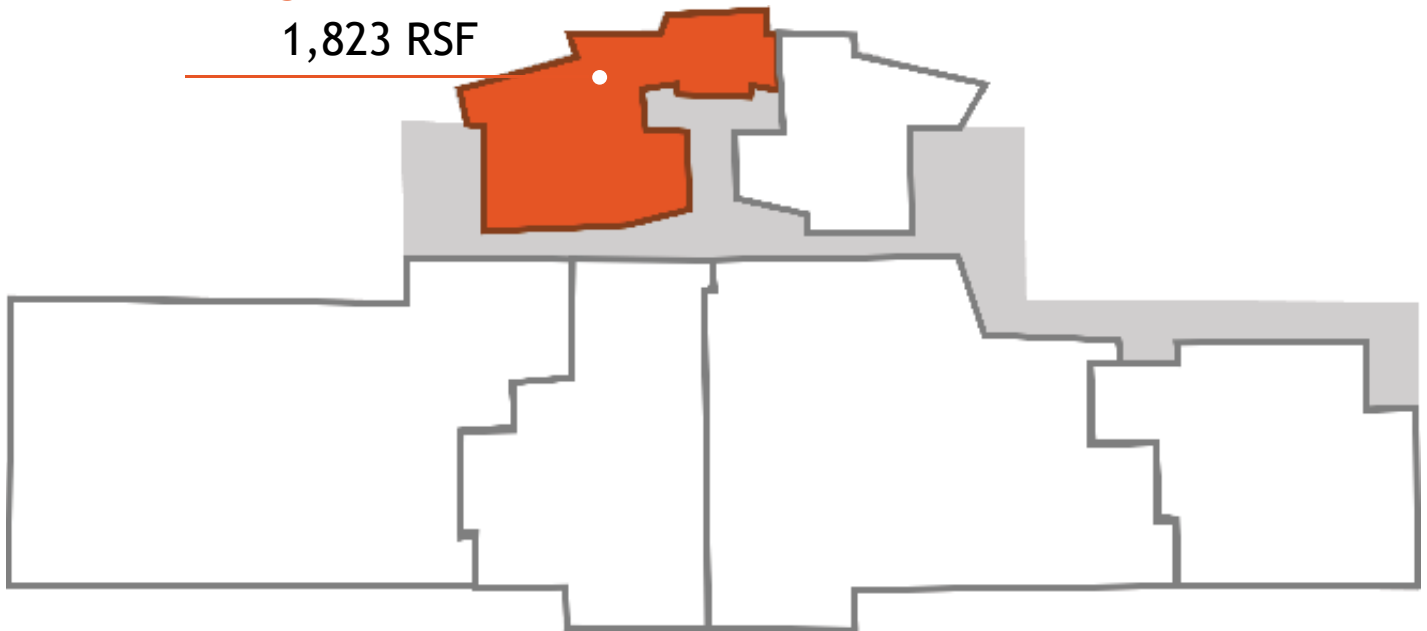
Roseville Medical Center

1835 County Road C, Roseville, MN 55113

SECOND LEVEL



AVAILABLE
Suite 230
1,823 RSF



Scan for 3-D Tour

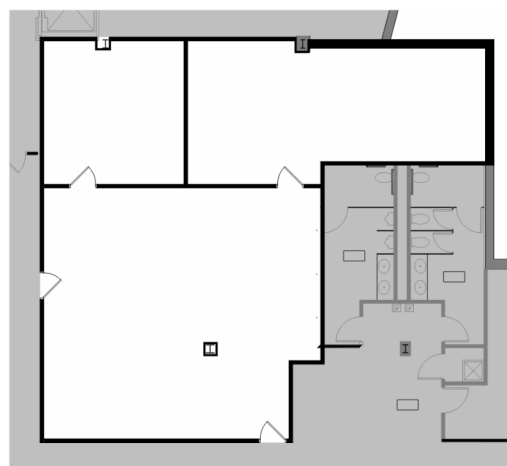


For Leasing Information:

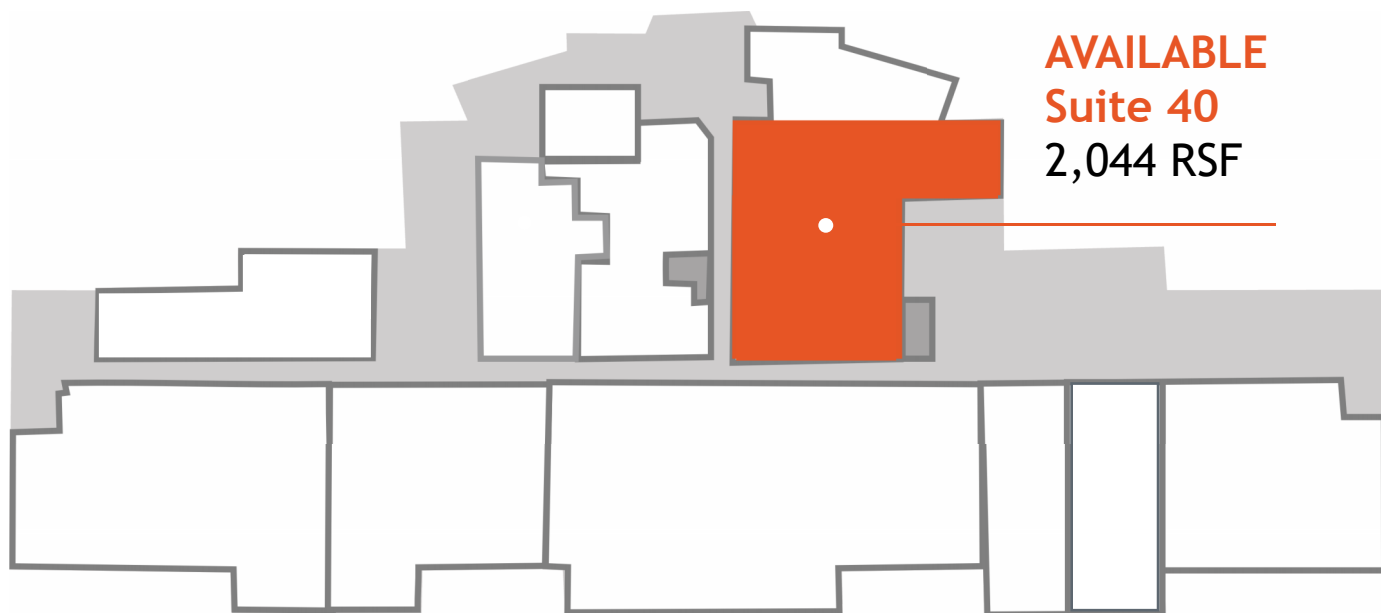
Mike Fleetham | (952) 767-2842 | MFleetham@MedCraft.com



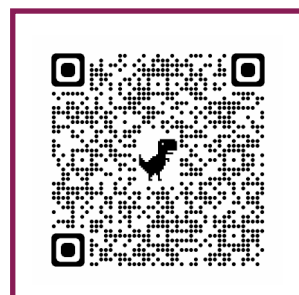
LOWER LEVEL



AVAILABLE
Suite 40
2,044 RSF



Scan for 3-D Tour



Roseville Medical Center

1835 County Road C, Roseville, MN 55113



PROPERTY OWNED & MANAGED BY:
WELLTOWER INC.
welltower.com



MedCraft[®]
Healthcare Real Estate

PROPERTY LEASED BY:
MEDCRAFT HEALTHCARE REAL ESTATE
952 767 2842 | medcraft.com