



114 EAST OAK STREET

CHICAGO, IL

LUXURY RETAIL LOCATED IN THE HEART OF
GOLD COAST & LUXURY RETAIL LOCATED IN THE HEART OF
GOLD COAST & LUXURY RETAIL LOCATED IN THE HEART OF
GOLD COAST & LUXURY RETAIL LOCATED IN THE HEART OF

LOCATION DETAILS

CHICAGO'S MOST AFFLUENT AREA

with Daytime Population of +215,000 within 1 mile

OVER 35 HOTELS [±9,000 ROOMS] WITHIN A HALF-MILE

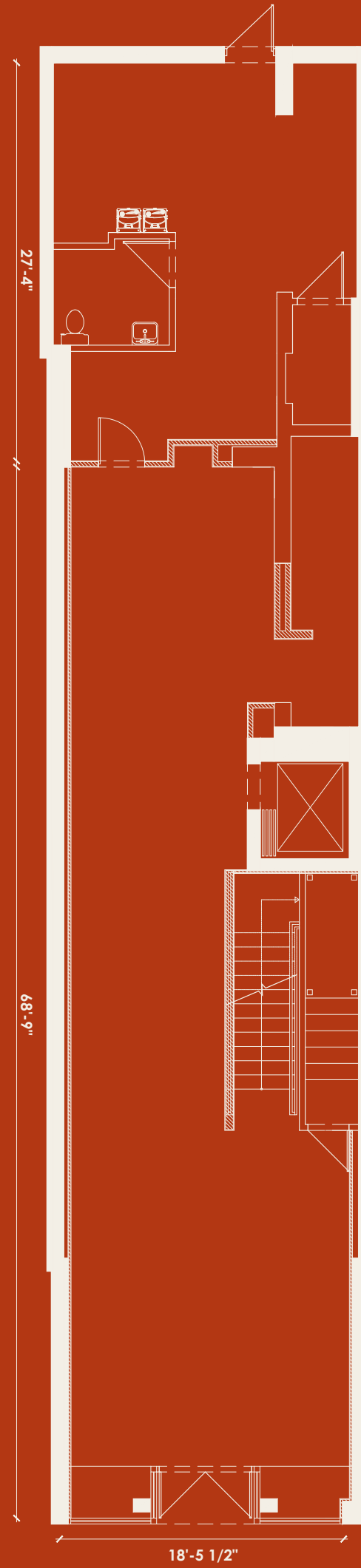
The Four Seasons Waldorf Astoria The Drake Ritz-Carlton
Peninsula Thompson Hotel Viceroy Sofitel

NEIGHBORING RETAILERS INCLUDE

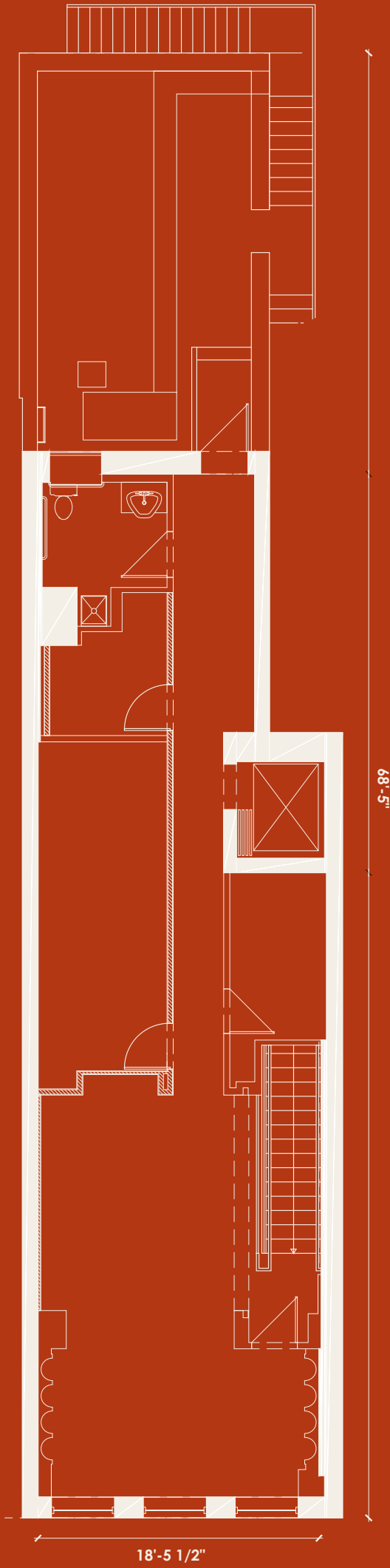
CHANEL HERMÈS PARIS PRADA Dior Cartier
HARRY WINSTON GUCCI ARITZIA RICHARD MILLE
Van Cleef & Arpels lululemon MONCLER REFORMATION
TESLA bloomingdales BRUNELLO CUCINELLI A BATHING APE



FLOOR 1
1,888 SF



FLOOR 2
1,318 SF



EAST OAK STREET

SITE DETAILS

3,206 SF AVAILABLE

Over two levels

OVER 18 FEET

of frontage along Oak Street

BRANDING OPPORTUNITY

On two levels

CEILING HEIGHTS

First Floor: 16' to the deck

Second Floor: 15' to the deck

AVAILABLE IMMEDIATELY

GOLD COAST

CHICAGO'S MOST AFFLUENT AREA

The map displays the following streets and associated brands:

- CHICAGO SINAI CONGREGATION** (top left)
- CHASE**, **ADALINA**, **INDOCHINO** (top left-center)
- OGDEN ELEMENTRY SCHOOL** (top center)
- THE NEWBERRY RE-DEVELOPMENT** (top center)
- ANTHROPOLOGIE (COMING SOON)** (top center)
- MOXIES (COMING SOON)**, **DUBLIN'S**, **MAPLE & ASH**, **URBAN OUTFITTERS**, **VICEROY CHICAGO**, **SOMERSET**, **FUTURE RE-DEVELOPMENT** (top right)
- STATE STREET** (horizontal street)
- Tempo CAFE**, **POTASH**, **Starbucks**, **Seto**, **tails in the city**, **CONTESSA BOTTEGA**, **SOFITEL LUXURY HOTELS**, **LE BAR**, **rag & bone** (left side)
- A. LANGE & SÖHNE**, **TALBOTT HOTEL**, **VERONICA BEARD**, **MEJURI (COMING SOON)**, **SAINT LAURENT PARIS**, **GANNI (COMING SOON)**, **Rails (COMING SOON)** (left-center)
- WALDORF ASTORIA**, **W** (left-center)
- Waldorf Astoria**, **Cartier**, **BALENCIAGA**, **MONTBLANC**, **Madewell**, **Glossier**, **HERMES**, **OLIVER PEOPLES PARIS**, **GIORGIO ARMANI**, **Loe R. Piana**, **CÉLINE**, **BRUNELLO CUCINELLI**, **VERSACE**, **DIOR**, **Dior HOMME**, **AMIRI**, **patagonia**, **KITH (COMING SOON)**, **REFORMATION**, **ksubi**, **Van Cleef & Arpels**, **CHANEL**, **A-K-R-I-S (COMING SOON)**, **GRAFF**, **Wilson**, **eskandar**, **THE FINE TUNING JEWELLERS**, **Audemars Piguet**, **TODS**, **GUCCI** (center)
- WALTON STREET** (vertical street)
- SKIMS (COMING SOON)**, **HUGO BOSS**, **GIBSONS**, **SHINOLA DETROIT**, **THOMPSON CHICAGO**, **VUORI ARCTERYX**, **PRADA**, **MARC JACOBS**, **Christofle**, **GOLDEN GOOSE**, **COS**, **STONE ISLAND**, **Wolfford**, **ST. JOHN**, **BUCCELLATI**, **TOM FORD**, **D&G**, **CH**, **LUGANO (COMING SOON)**, **VINCE.**, **ISAIA**, **GENEVA SEAL**, **BURDEEN'S**, **BMO Harris Bank** (right side)
- RUSH STREET** (diagonal street)
- AWAY**, **Godies**, **Abercrombie & Fitch**, **WARBY PARKER**, **WINTRUST BANK (COMING SOON)**, **CARMINE'S**, **no**, **BELEVUE**, **LUX BAR**, **PANCAKE HOUSE** (right-center)
- DELAWARE PLACE** (vertical street)
- P**, **PARKING GARAGE 1,600 STALLS** (center)
- 900 NORTH MICHIGAN SHOPS**, **bloomingdales**, **FOUR SEASONS Hotels and Resorts**, **ASTER HALL CHICAGO**, **EQUINOX**, **THE WHITEHALL HOTEL Chicago's First Independent Boutique Hotel**, **FOURTH PRESBYTERIAN CHURCH** (bottom left)
- MICHIGAN AVENUE** (bottom horizontal street)
- OAK STREET** (vertical street)
- ELM STREET** (vertical street)
- 114 EAST OAK STREET** (highlighted address with photograph of building)

FOR MORE INFORMATION,
PLEASE CONTACT:

Danny Jacobson

+1 312 935 1901
danny.jacobson@cbre.com

Stephen Ansani

+1 312 935 1907
stephen.ansani@cbre.com

Luke Molloy

+1 312 935 1905
luke.molloy@cbre.com

CBRE

114 EAST OAK STREET

CHICAGO, IL

© 2025 CBRE, Inc. All rights reserved. This information has been obtained from sources believed reliable but has not been verified for accuracy or completeness. CBRE, Inc. makes no guarantee, representation or warranty and accepts no responsibility or liability as to the accuracy, completeness, or reliability of the information contained herein. You should conduct a careful, independent investigation of the property and verify all information. Any reliance on this information is solely at your own risk. PMStudio

