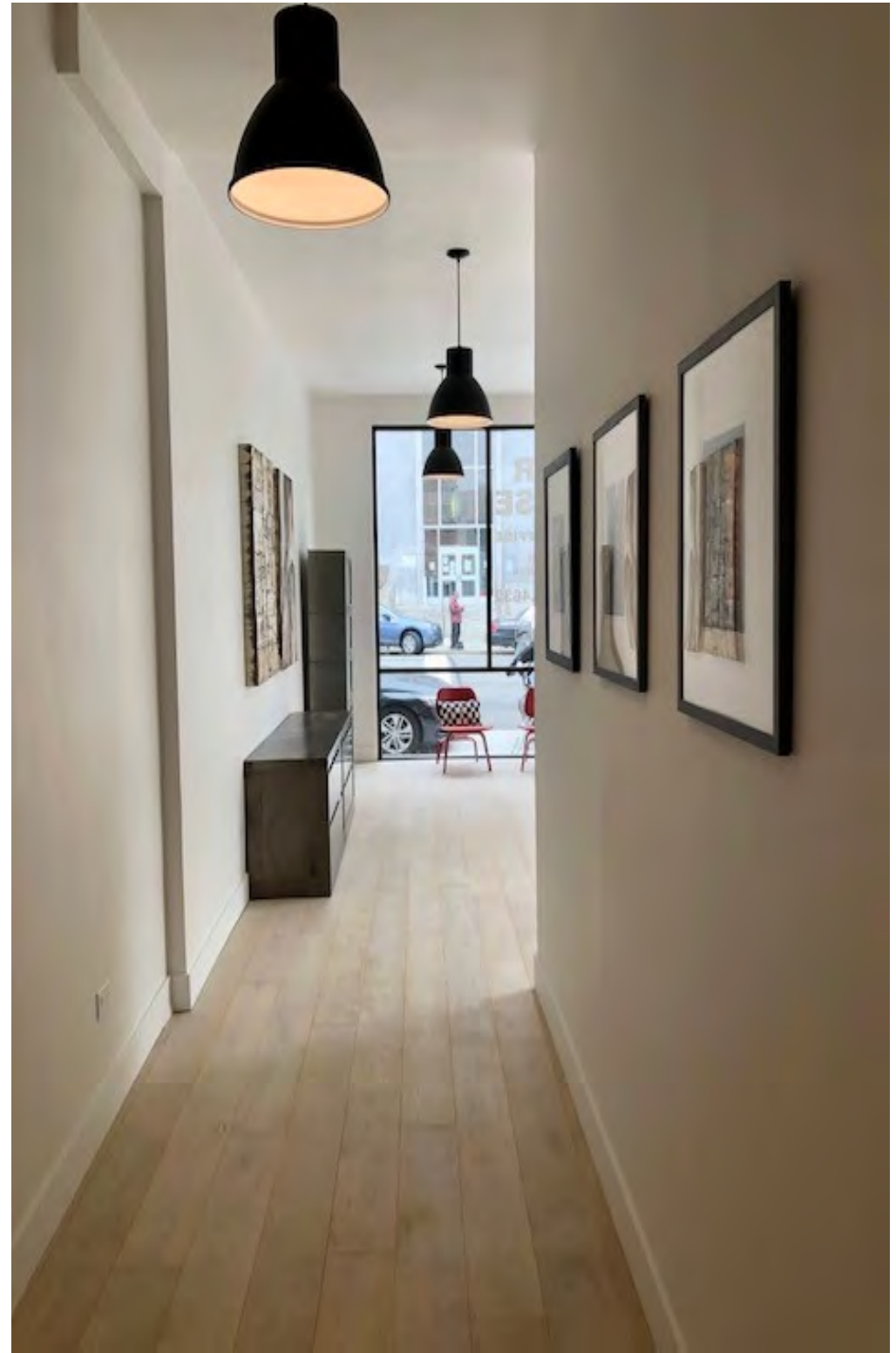


# 855 BRYANT STREET, SUITE 1 | SAN FRANCISCO

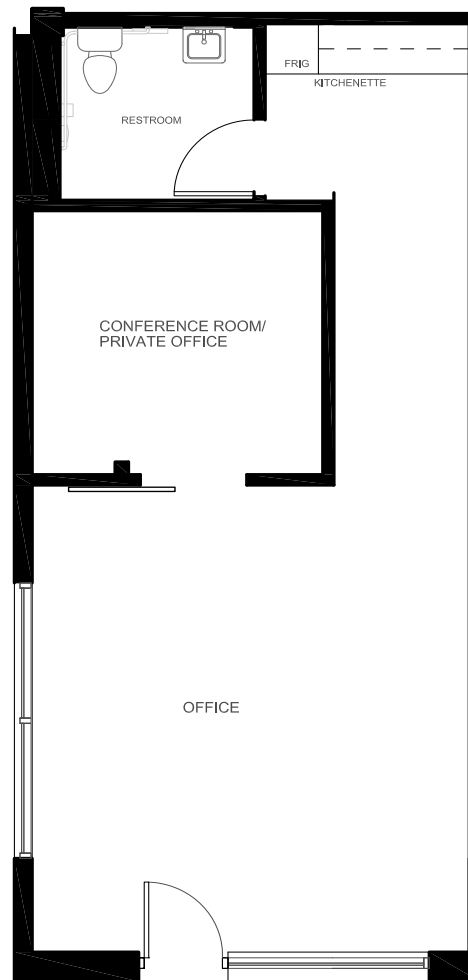
## HIGHLIGHTS

- Ideal corner location on Bryant at Boardman, directly across the street from Hall of Justice/San Francisco courthouse
- 653 square feet
- Ready to occupy with full build-out
- Office furniture available if desired
- Private, spacious ADA bathroom
- Conference room with custom sliding hardwood door
- Kitchenette with rift white oak cabinets and stainless steel refrigerator
- Large storefront windows
- 11" ceilings
- Modern pendant lighting and ceiling fan
- Wide plank oak floors
- Flexible lease term available
- Easy on/off freeway access
- Close to BART/MUNI
- Monthly parking nearby





# FLOOR PLAN



**855 BRYANT STREET: SUITE 1**

SCALE: 3/16"=1'-0"

~653 SF



**MARTIN BUILDING COMPANY**

Jill Helffenstein

[jill@martinbuilding.com](mailto:jill@martinbuilding.com)

415.348.4664

[martinbuilding.com](http://martinbuilding.com)