

I 30 HOV

INTERSTATE 30

MOTLEY DR

BEE
WEALTH
MANAGEMENT
LLC

LAND FOR

SALE

3500 I30, Mesquite, TX 75074



Insurance Now



Microtel Inn
& Suites

SORRENTO DR

POINTEAST DR

LAND DETAILS

3500 I30, Mesquite, TX 75074



PROPERTY SIZE

5.9 acres
74,000 sf



PRICE

\$7,000,000



ZONED

Commercial flex space



450 feet of frontage
along Hwy 30



3 buildings - 24,000 Sf each
Business Center for tenants - 1,800 sf



SURVEY

3500 I30, Mesquite, TX 75074



Underground utility work completed



Retaining wall completed



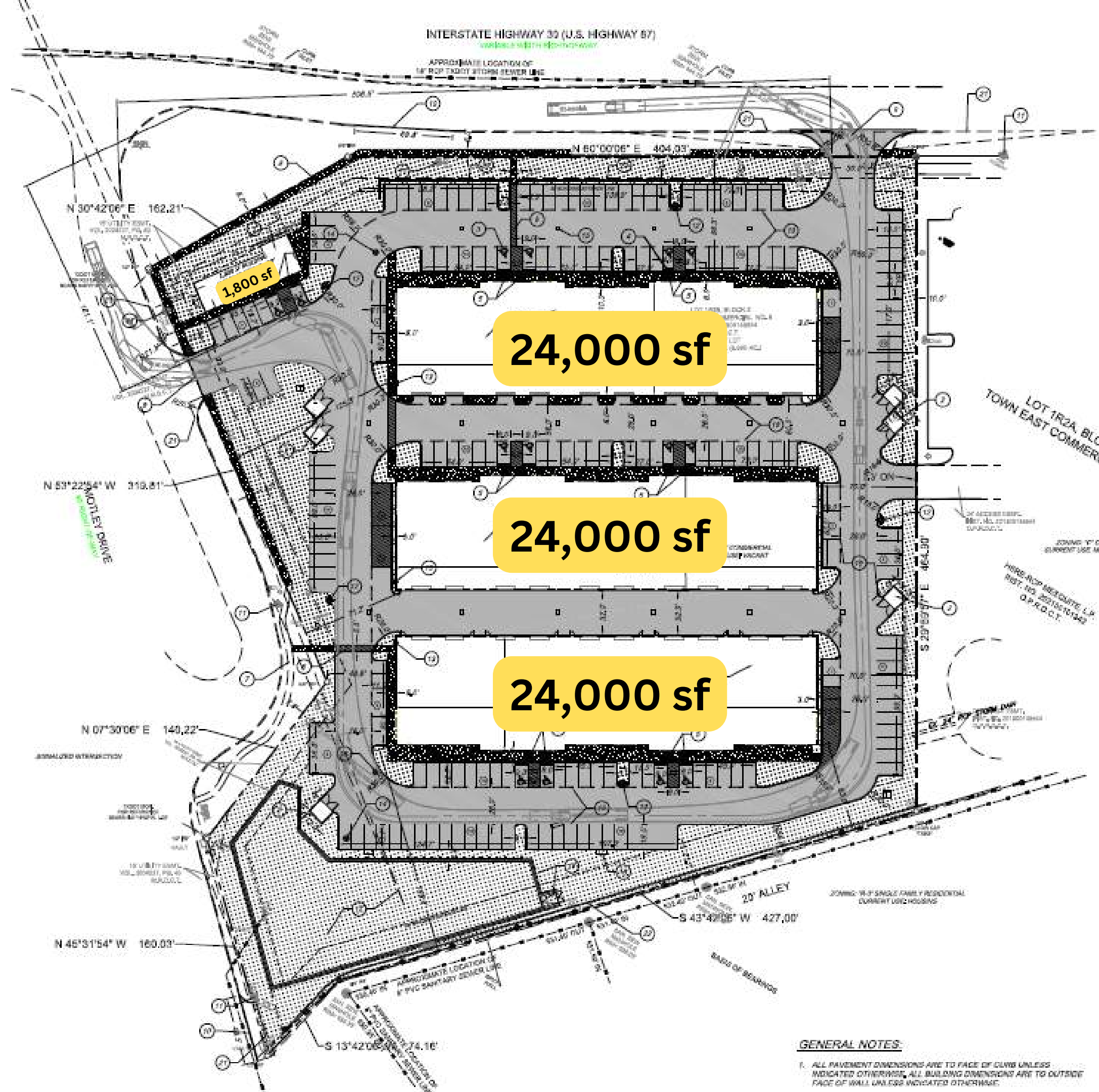
Detention pond completed



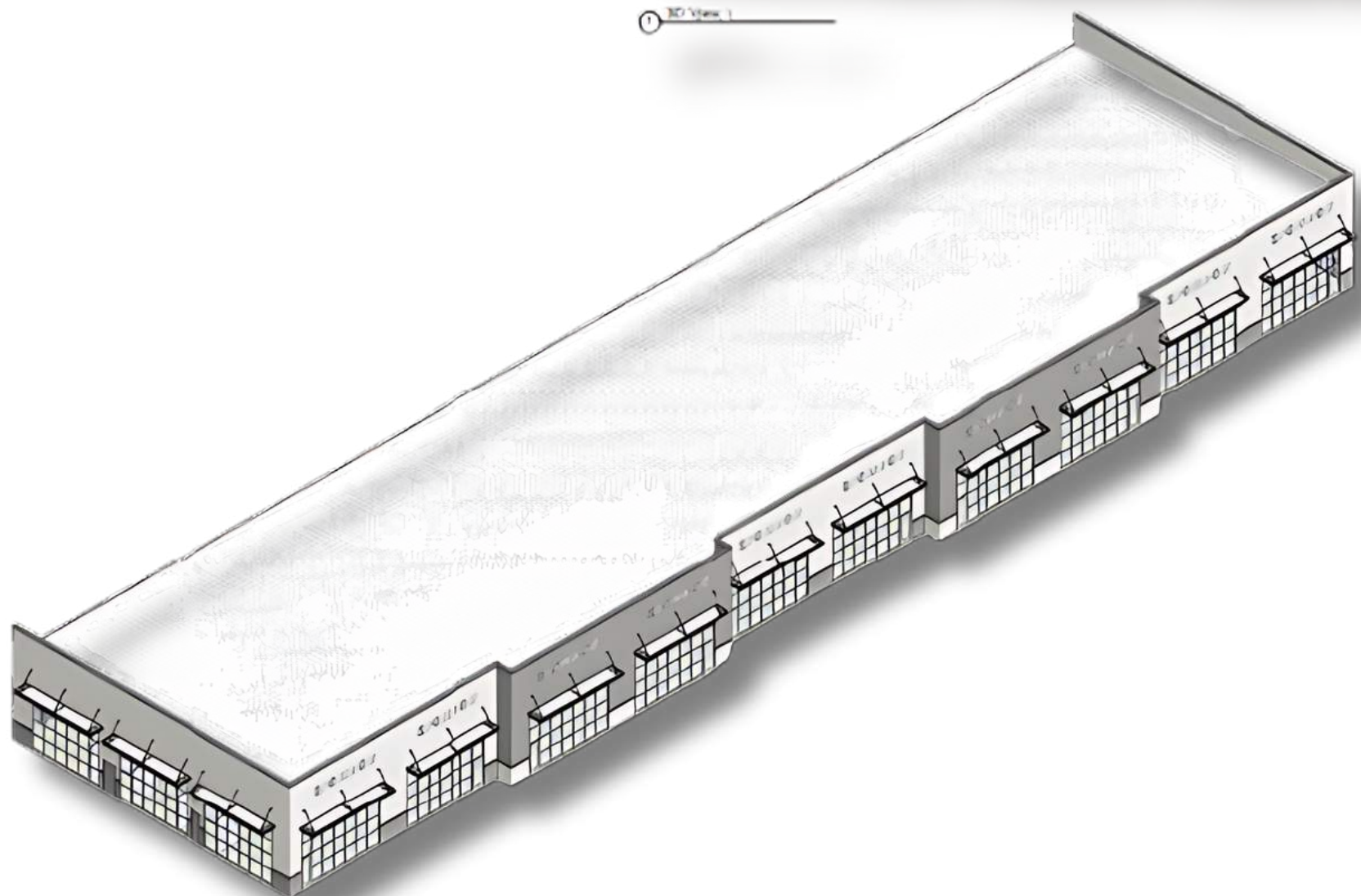
Underground sewer system completed



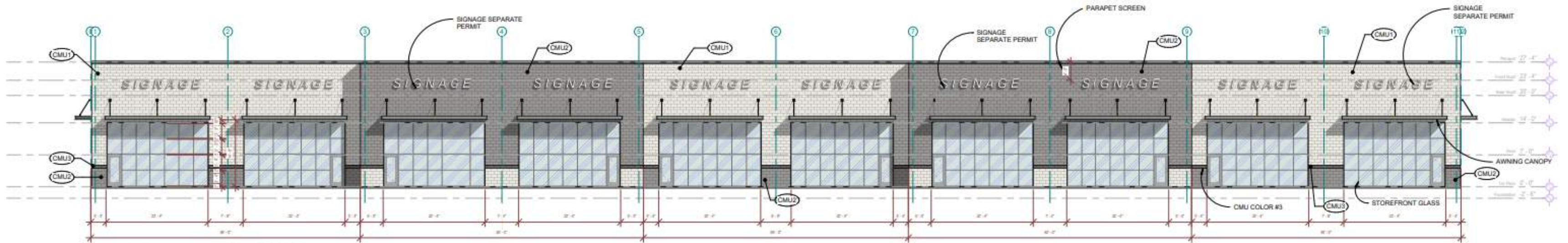
Paving work in progress



ELEVATION PLAN

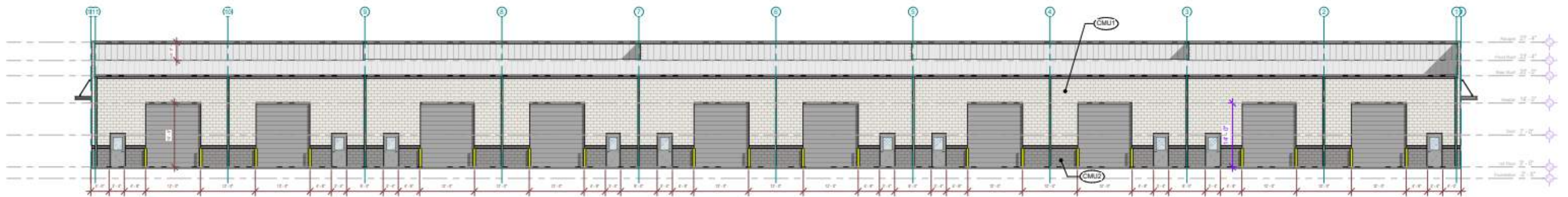


Warehouse



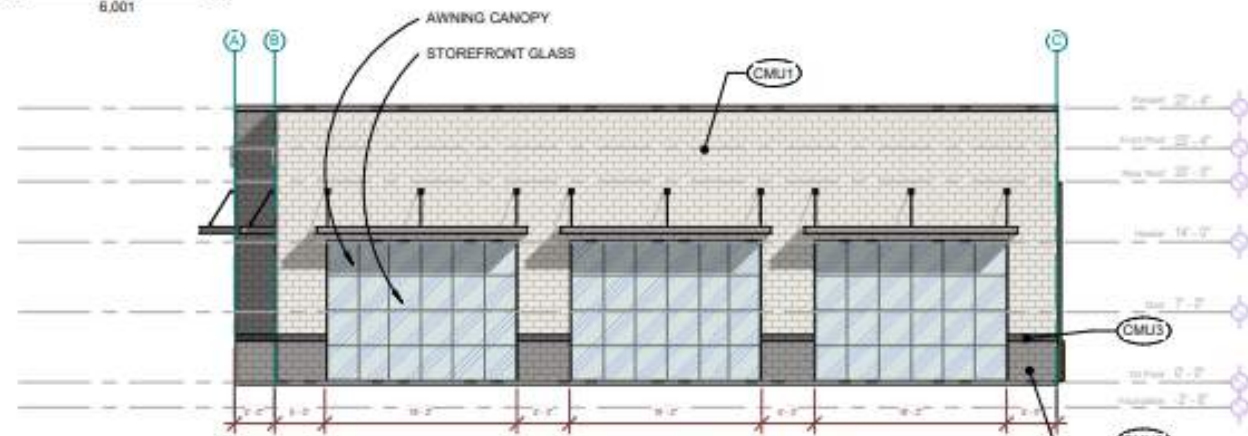
1 Front Elevation
 3/32" = 1'-0"

FACADE MATERIAL AREA		
MATERIAL	AREA (SF)	(%)
CMU	6,156	62
GLASS WINDOWS & DOOR	3,128	38
TOTAL	8,200	



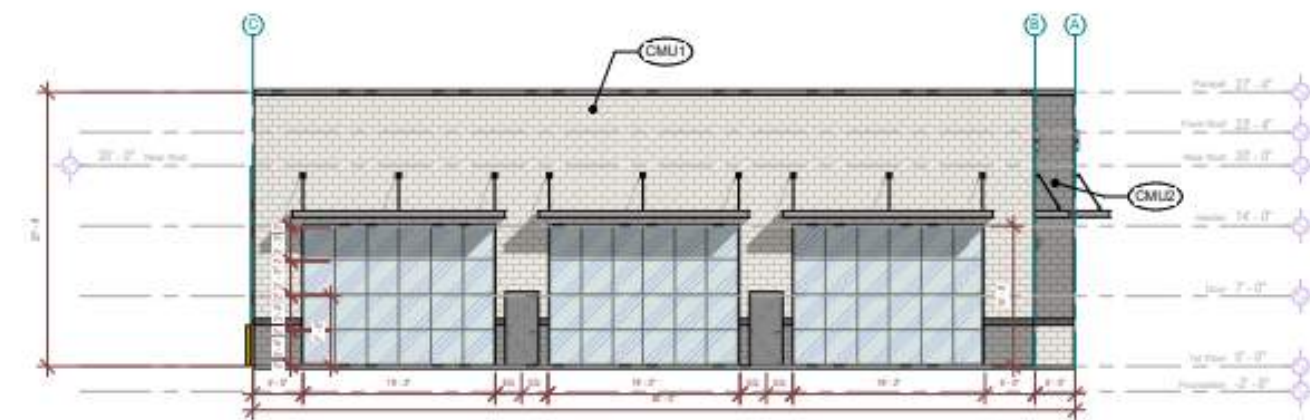
2 Rear Elevation
 3/32" = 1'-0"

FACADE MATERIAL AREA		
MATERIAL	AREA (SF)	(%)
CMU	4,111	69
MAN DOORS	210	3
OVERHEAD DOORS	1,680	28
TOTAL	6,001	



4 Right Side Elevation
 3/32" = 1'-0"

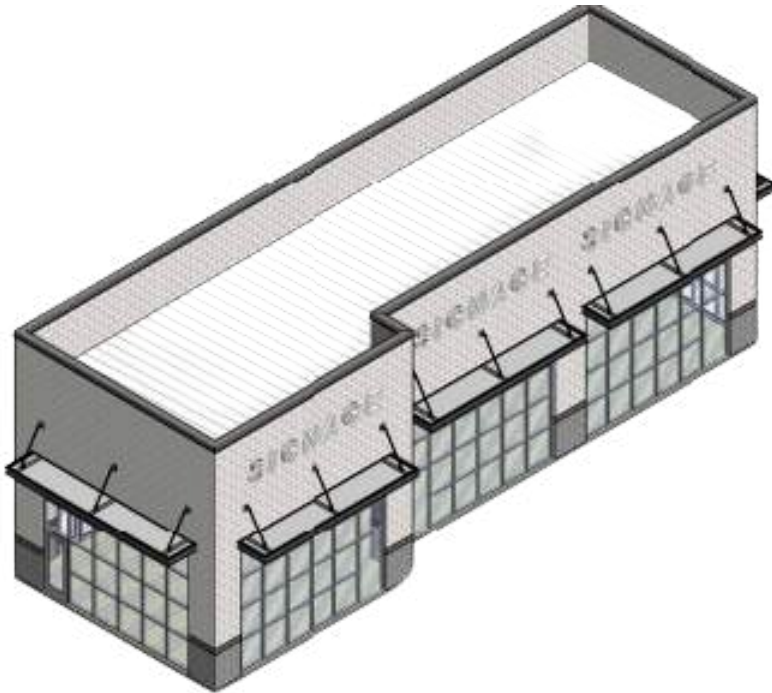
FACADE MATERIAL AREA		
MATERIAL	AREA (SF)	(%)
CMU	1,436	64
METAL DOOR	0	0
GLASS WINDOWS & DOOR	805	36
TOTAL	2,241	



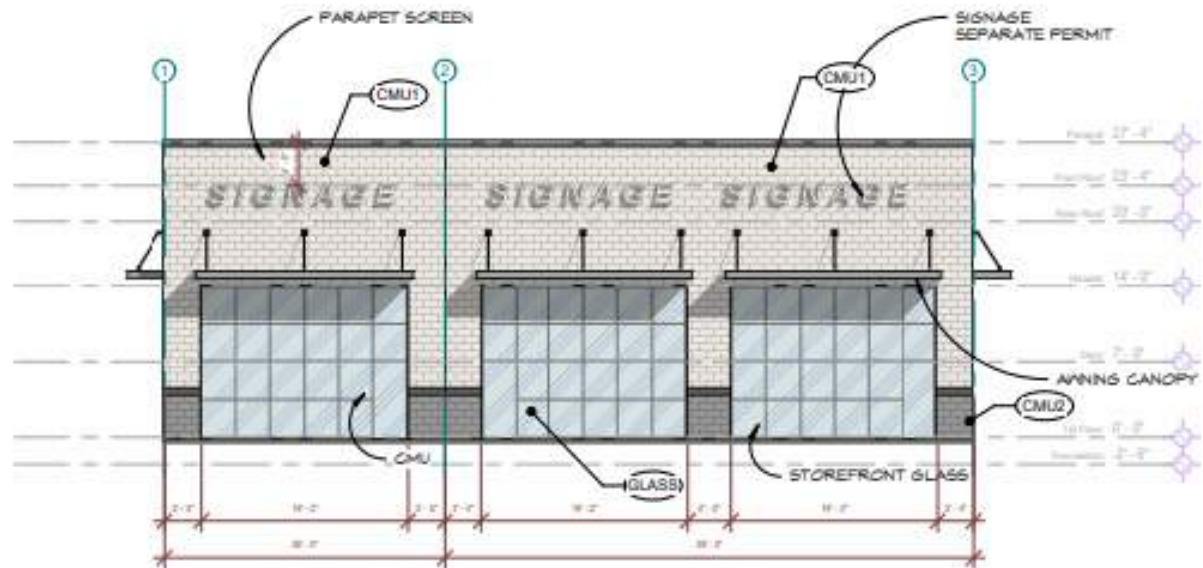
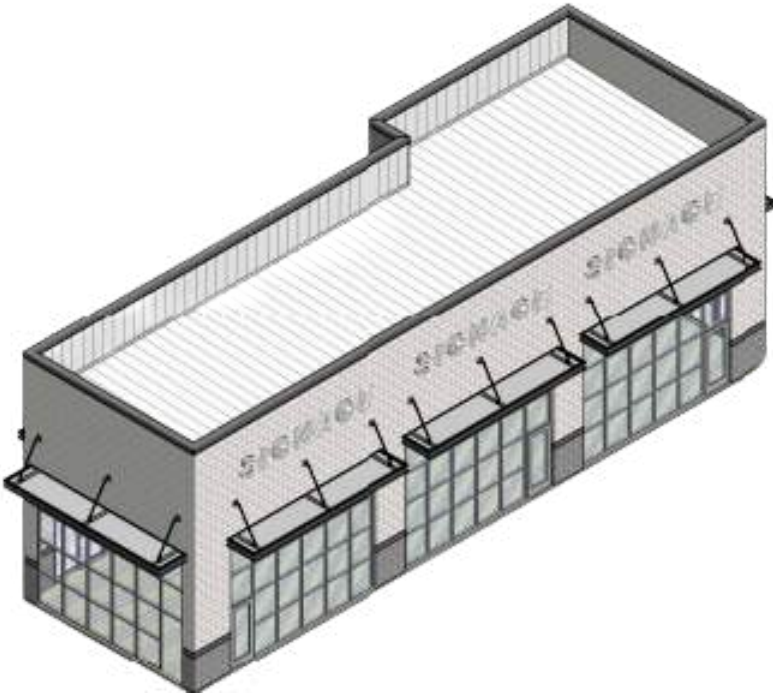
3 Left Side Elevation
 3/32" = 1'-0"

FACADE MATERIAL AREA		
MATERIAL	AREA (SF)	(%)
CMU	1,304	62
METAL DOOR	42	2
GLASS WINDOWS & DOOR	805	38
TOTAL	2,241	

Business Center-3D VIEW



5 3D Axonometric View



1 Front Elevation
3/32" = 1'-0"

FACADE MATERIAL AREA	AREA (SF)	(%)
MATERIAL CMU	1,245	61
GLASS WINDOWS & DOOR	805	39
TOTAL	2,050	

NEARBY TENANTS



Public Storage

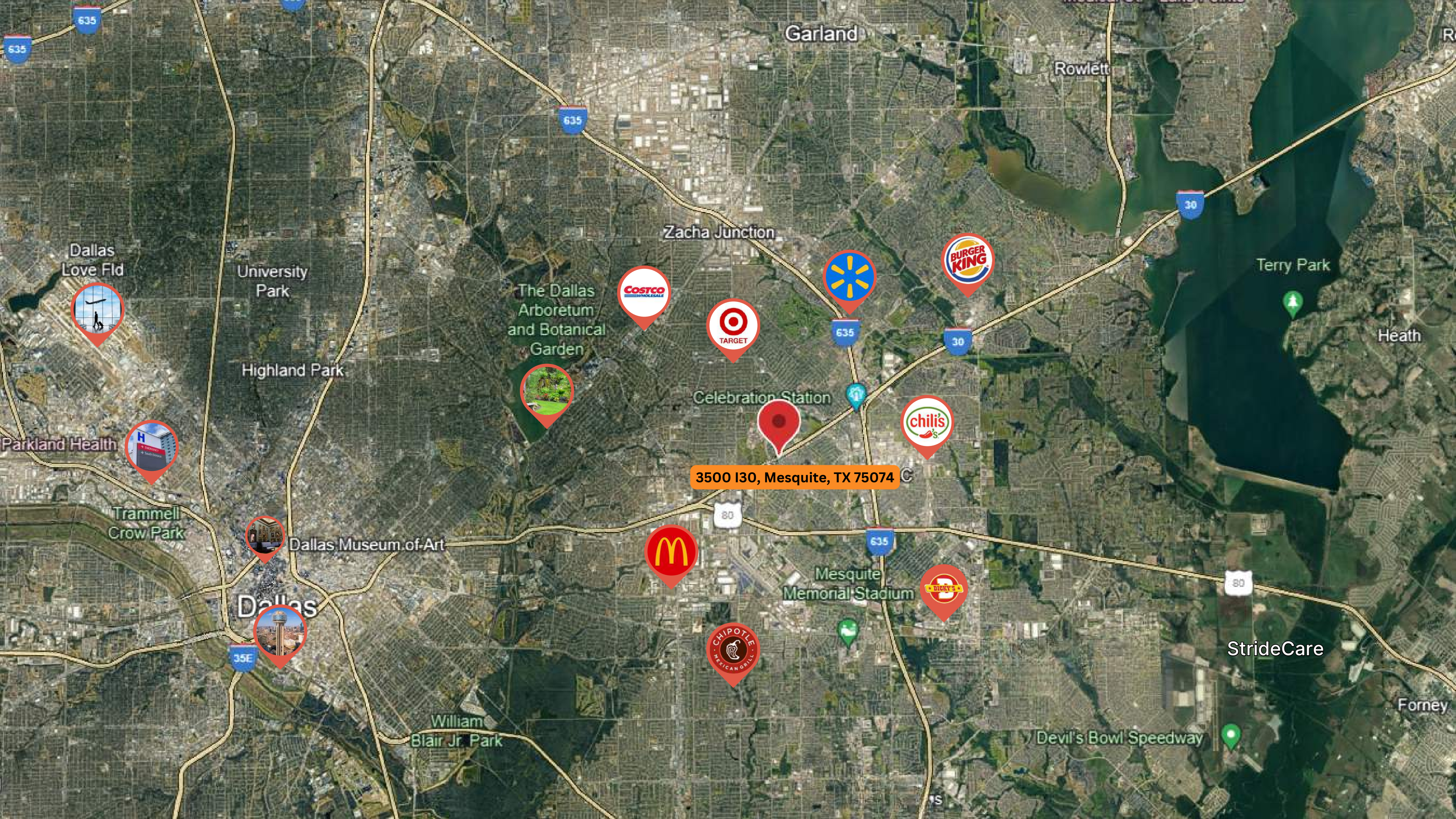
MOTLEY DR

INTERSTATE30

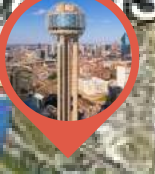
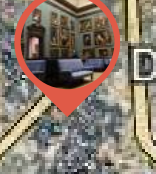
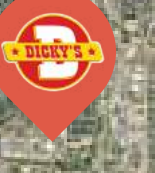
INTERSTATE30

I 30 HOV

StrideCare



3500 I30, Mesquite, TX 75074



AREA DEMOGRAPHICS

3500 I30, Mesquite, TX 75074



INTERSTATE 30
0.06 mi



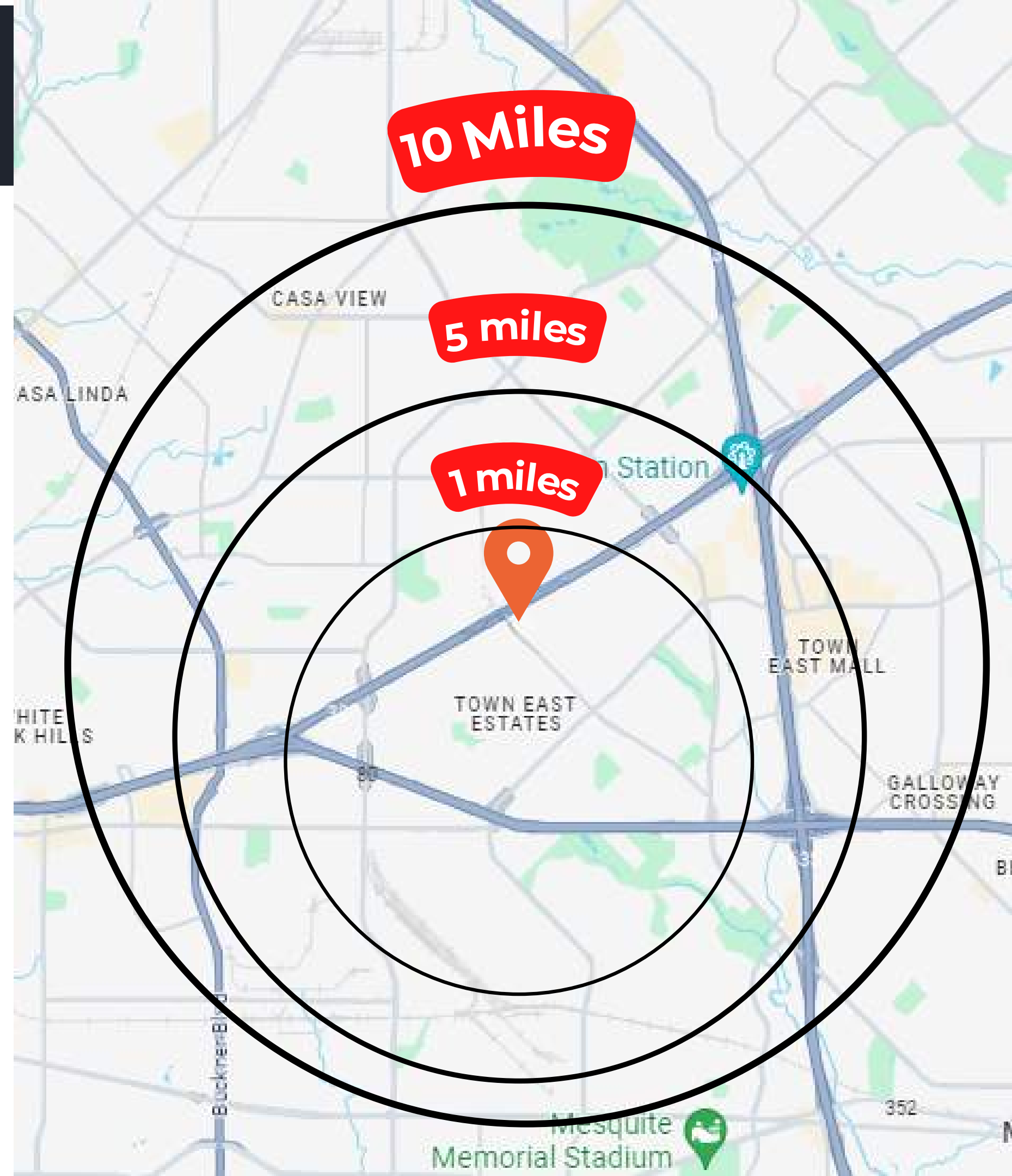
Mesquite Memorial Stadium
6.1 miles

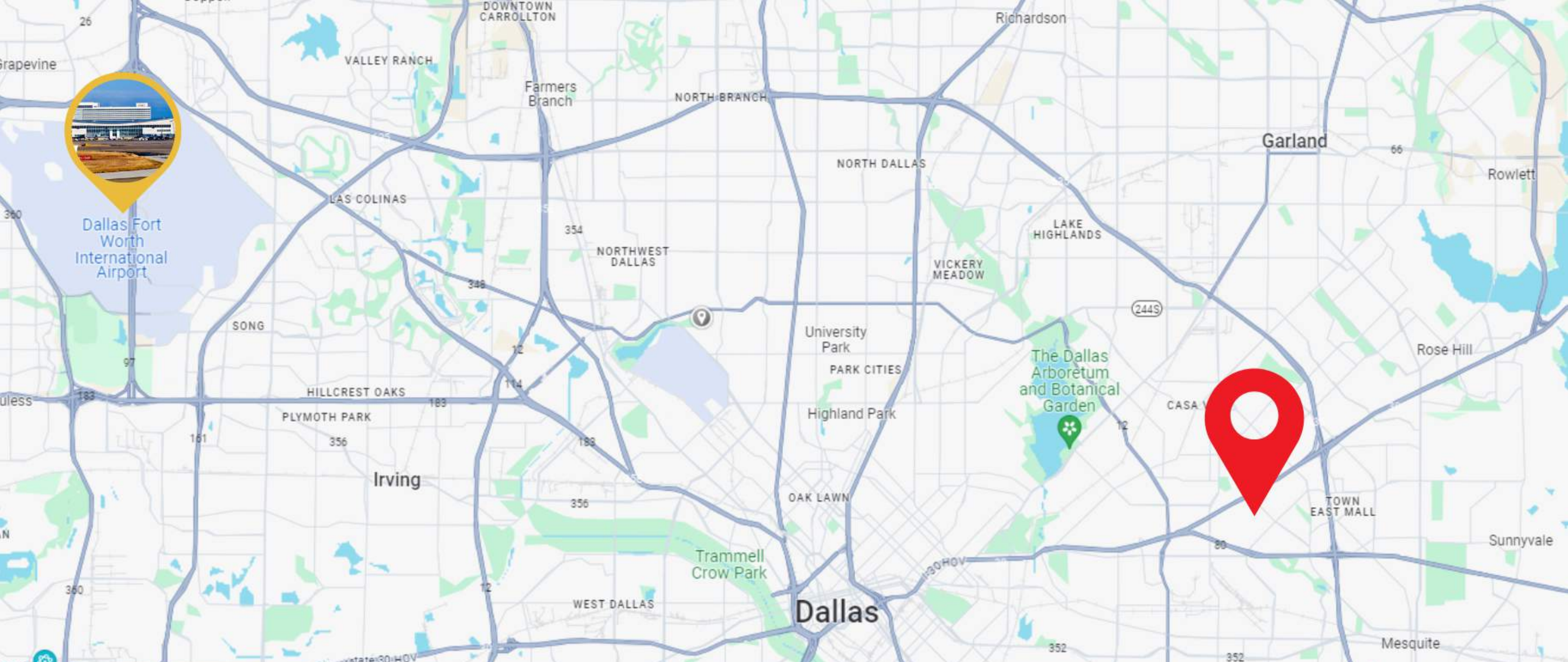


Dallas
10.2 miles



I-635 N
9.5 miles





**CONTACT
OUR TEAM**

HAS Realty Group



Sadia Khan



214-427-1835



skhan@hasrealtygroup.com