

FOR LEASE
2001
VAN NESS AVENUE
SAN FRANCISCO, CA



TCP
TOUCHSTONE
COMMERCIAL PARTNERS


DUNHILL PARTNERS WEST

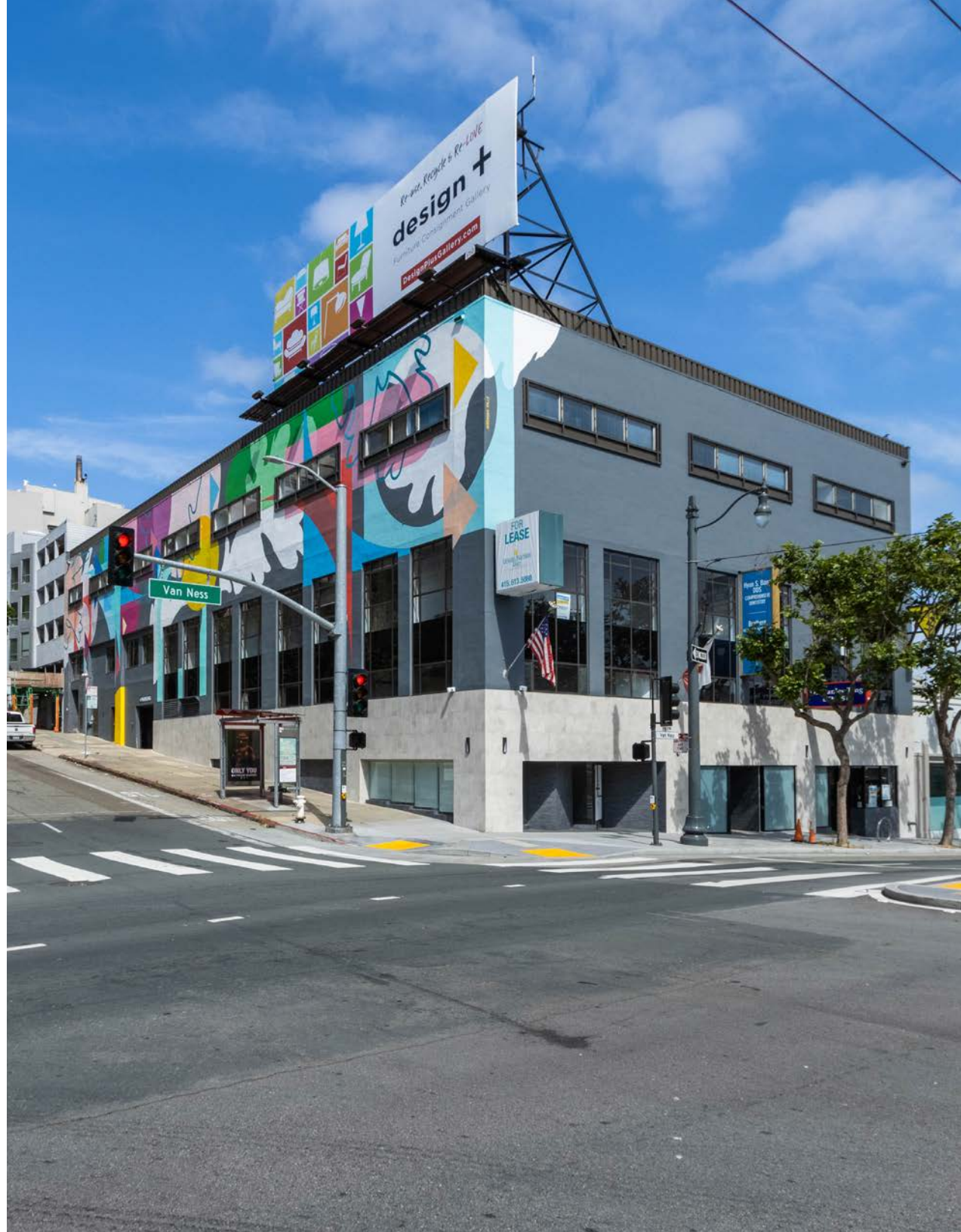
ZACH HAUPERT
415.539.1121
zhaupert@tcpre.com

TERRY EVERLEY
415.539.1108
teverley@tcpre.com

MARK HUTCHINSON
415.613.5080
mhutchinson@dunhillpartnerswest.com

2001 VAN NESS AVENUE SAN FRANCISCO, CA

03PROPERTY SUMMARY
04BUILDING ATTRIBUTES
05FOURTH LEVEL FLOOR PLAN
06FOURTH LEVEL PHOTOS
07LOCATION OVERVIEW
08-09NEARBY AMENITIES



PROPERTY SUMMARY

2001 Van Ness Avenue, San Francisco, CA

ADDRESS

2001 Van Ness Avenue, San Francisco, CA 94109

OFFICE

FOURTH FLOOR

Suite 411	+/- 807 Square Feet
Suite 406	+/- 1,626 Square Feet
Suite 403	+/- 598 Square Feet

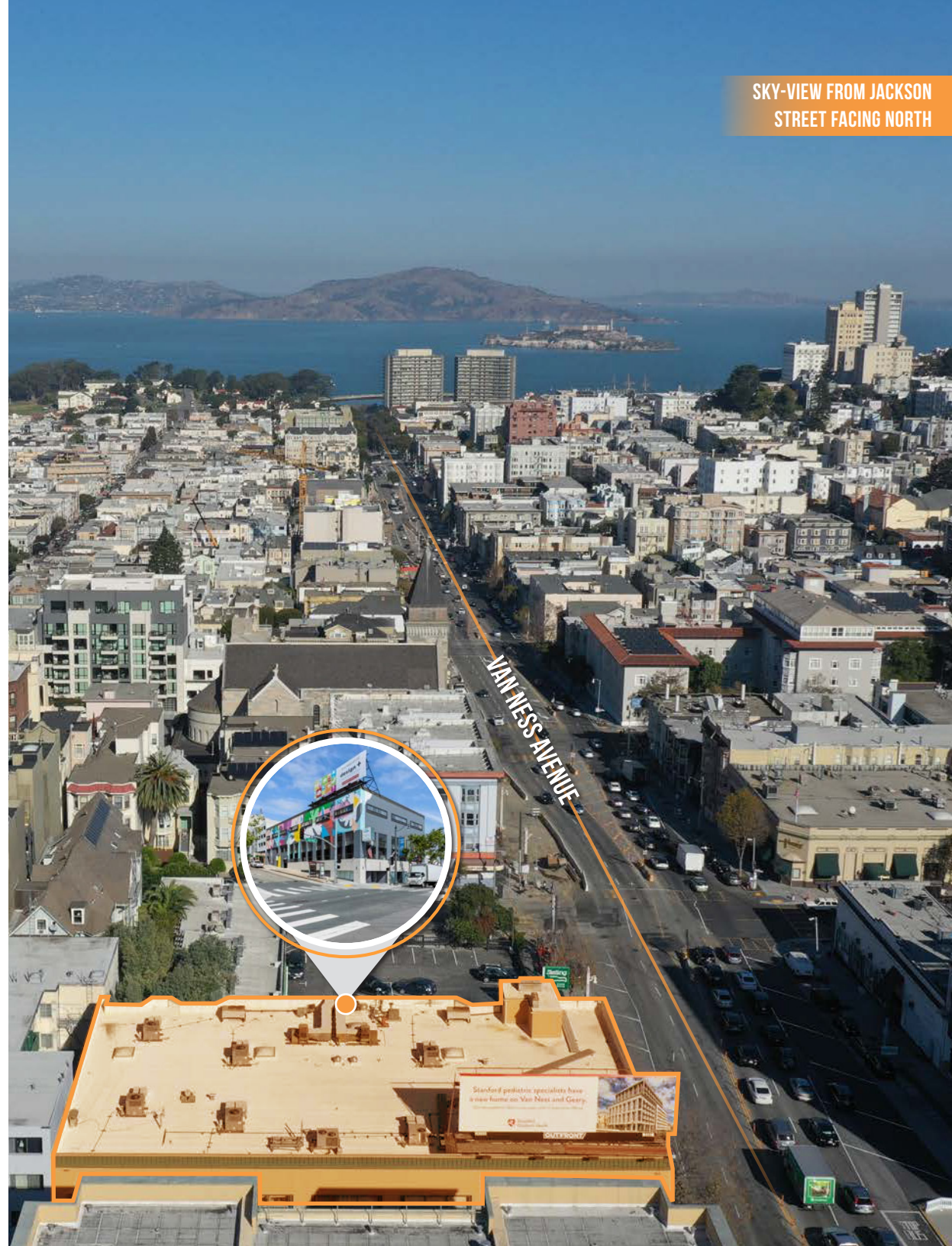
RENTAL RATE

Fourth Floor Office: \$50 / Square Foot / Year, F.S.

AVAILABILITY

Suites 411 & 403: Immediately

Suite 406: January 1, 2026



SKY-VIEW FROM JACKSON
STREET FACING NORTH

BUILDING ATTRIBUTES

2001 Van Ness Avenue, San Francisco, CA



MIX OF OFFICE AND RETAIL

Modern Office Space



HIGHLY VISIBLE CORNER

Van Ness Ave & Jackson St



ELEVATOR IN BUILDING

ADA Passenger Elevator



PUBLIC TRANSPORTATION

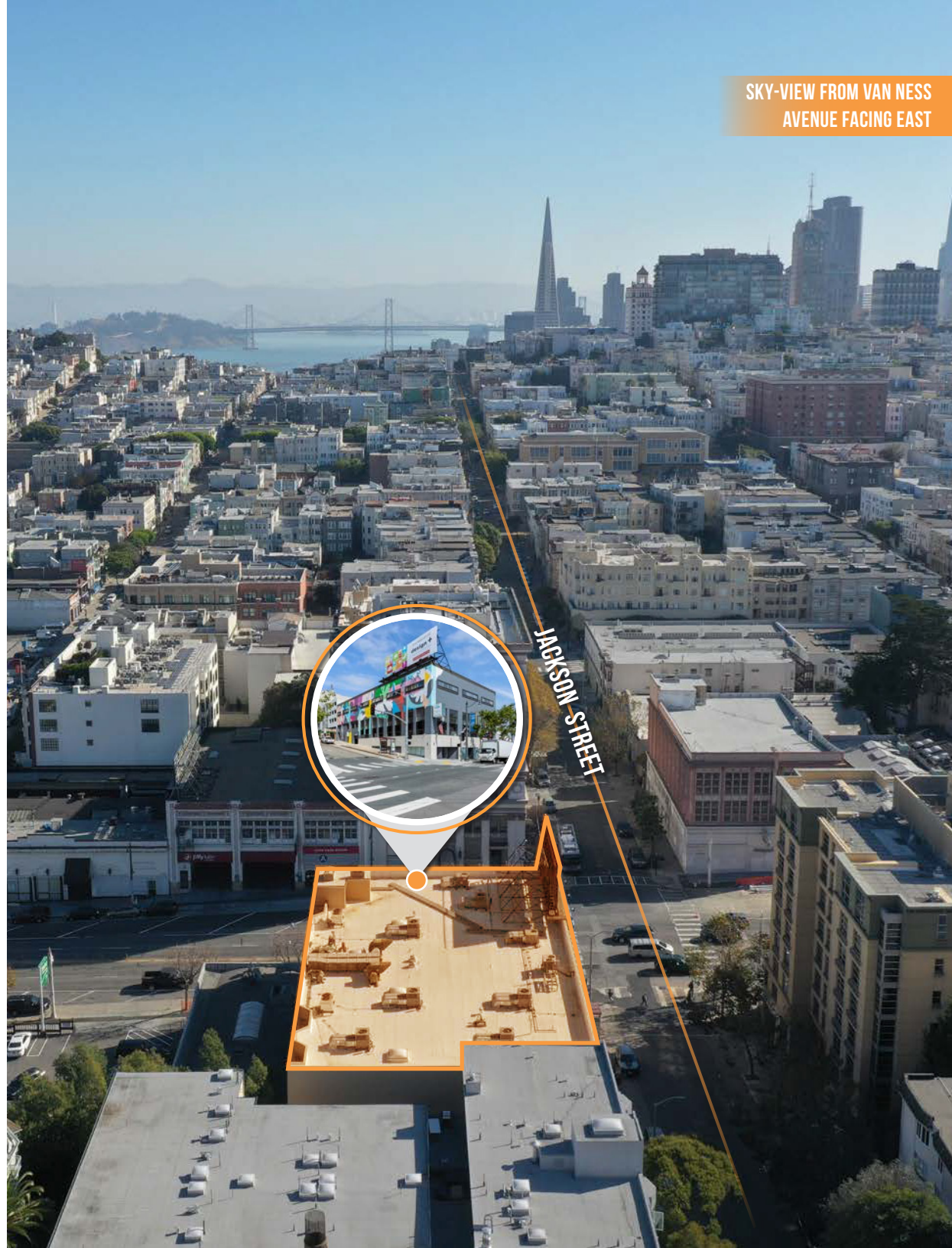
Immediate Access to MUNI Buses



PREMIER PACIFIC HEIGHTS LOCATION

Near Many Amenities and Public Transportation

SKY-VIEW FROM VAN NESS
AVENUE FACING EAST



FOURTH LEVEL FLOOR PLAN

Multi-Tenant Office Suite

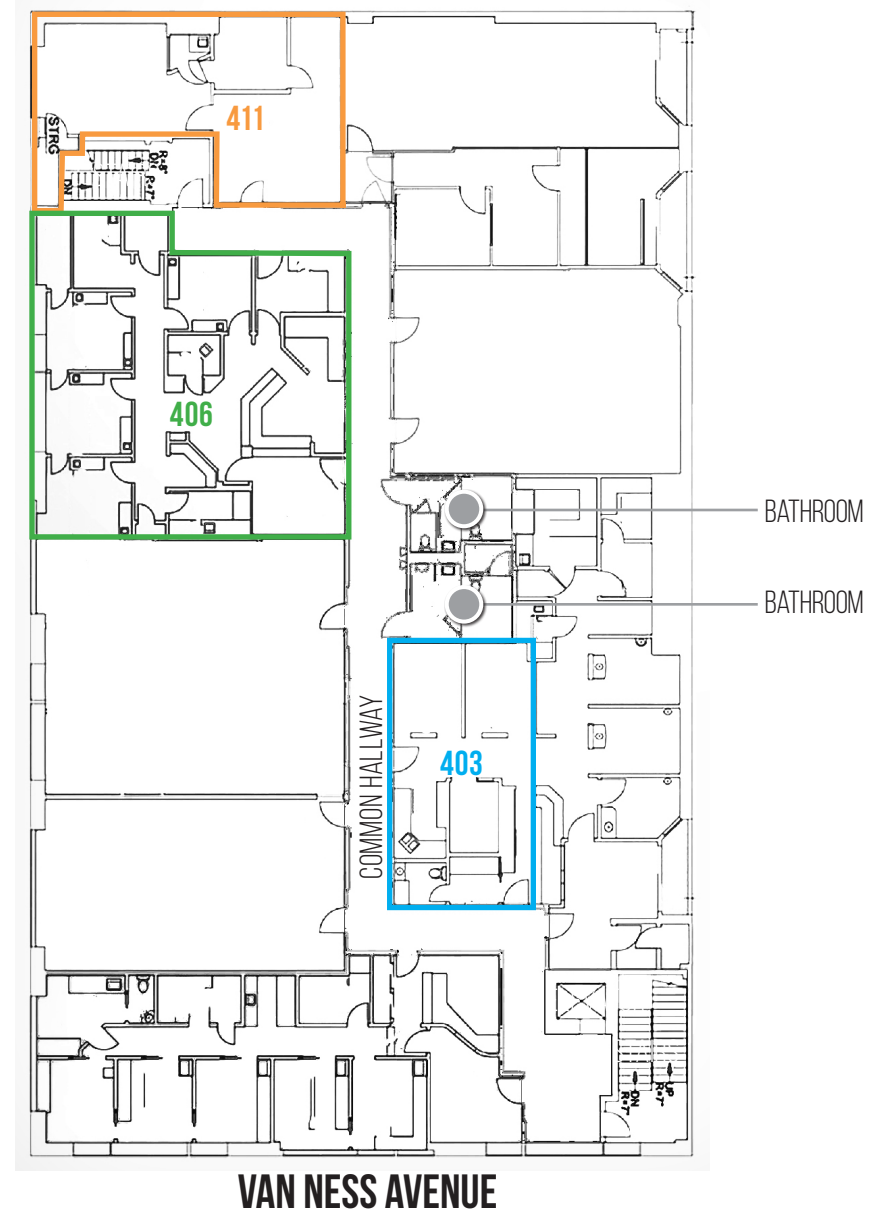
AVAILABLE SPACE

■ Suite 403	+/- 598 Square Feet (Dental Space)
■ Suite 406	+/- 1,626 Square Feet
■ Suite 411	+/- 807 Square Feet

BUILDING ATTRIBUTES

- + Multi-Tenant Office / Medical
- + ADA Passenger Elevator
- + Two (2) Common Area Restrooms

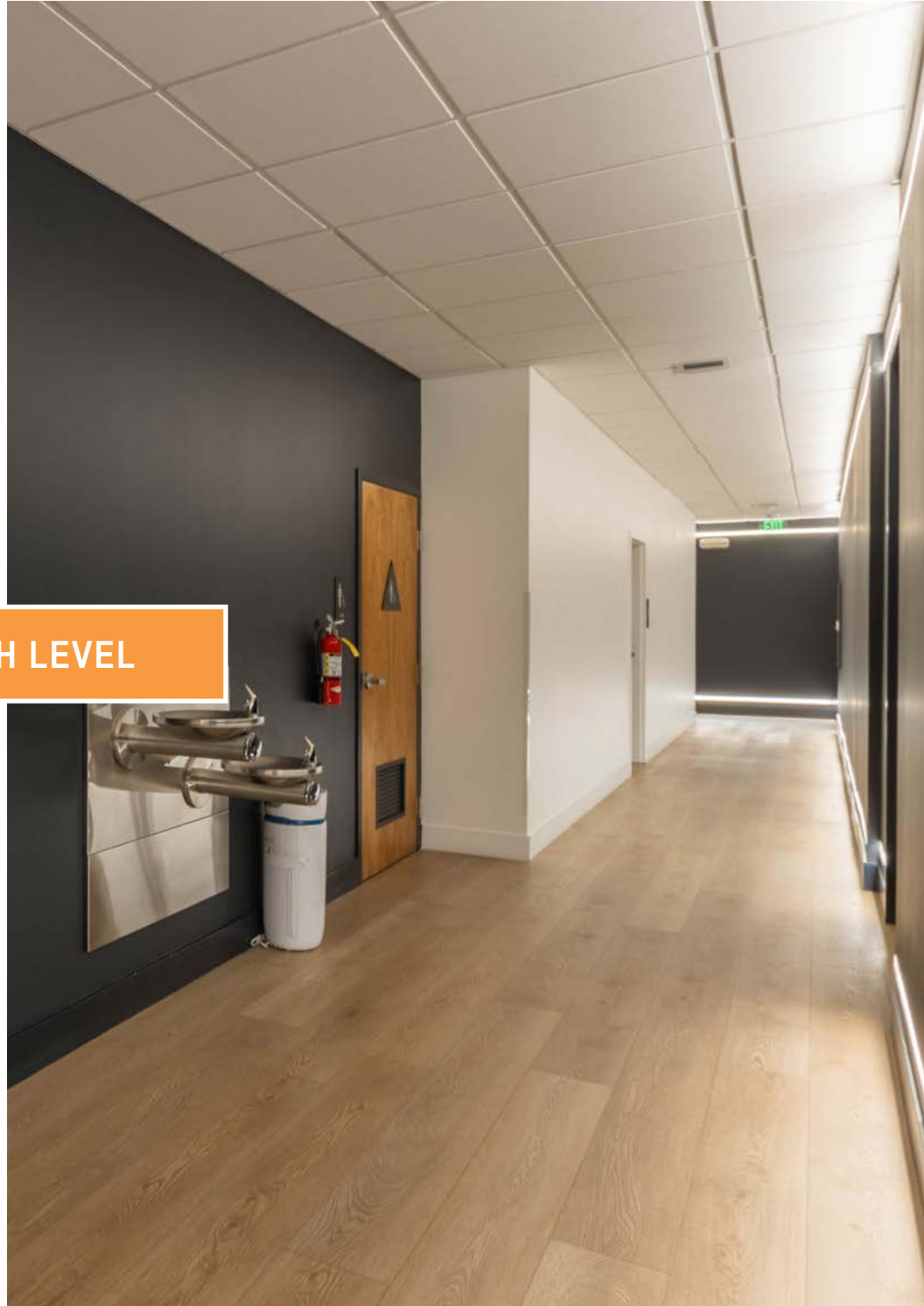
JACKSON STREET



Floor plans are an artistic representation and are not exact. Floor plans are not drawn to scale. Buyer is responsible for verifying their own measurements and surveys of the premises.



FOURTH LEVEL



LOCATION OVERVIEW

2001 Van Ness Avenue, San Francisco, CA

LOCATION OVERVIEW

This property is located between Pacific Heights and Nob Hill neighborhood in the San Francisco Bay Area. The subject property is well located in a rapidly changing neighborhood.



01 MIN to Van Ness Ave Muni

05 MIN to Lafayette Park

20 MIN to China Town



08 MIN to Union Square

09 MIN to South of Market

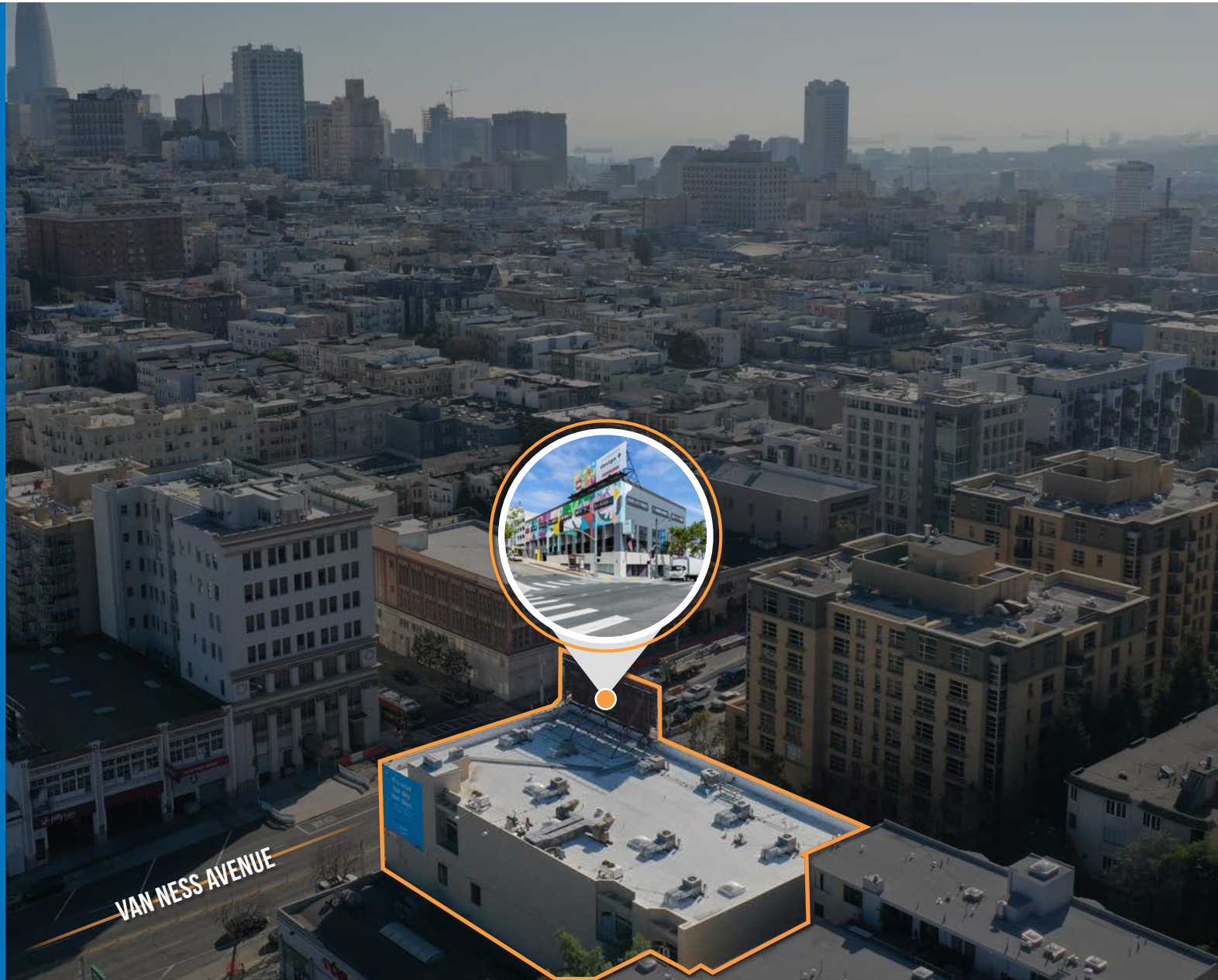
12 MIN to Mission District



08 MIN to 101 On-Ramp

16 MIN to 80 On-Ramp

17 MIN to 280 On-Ramp

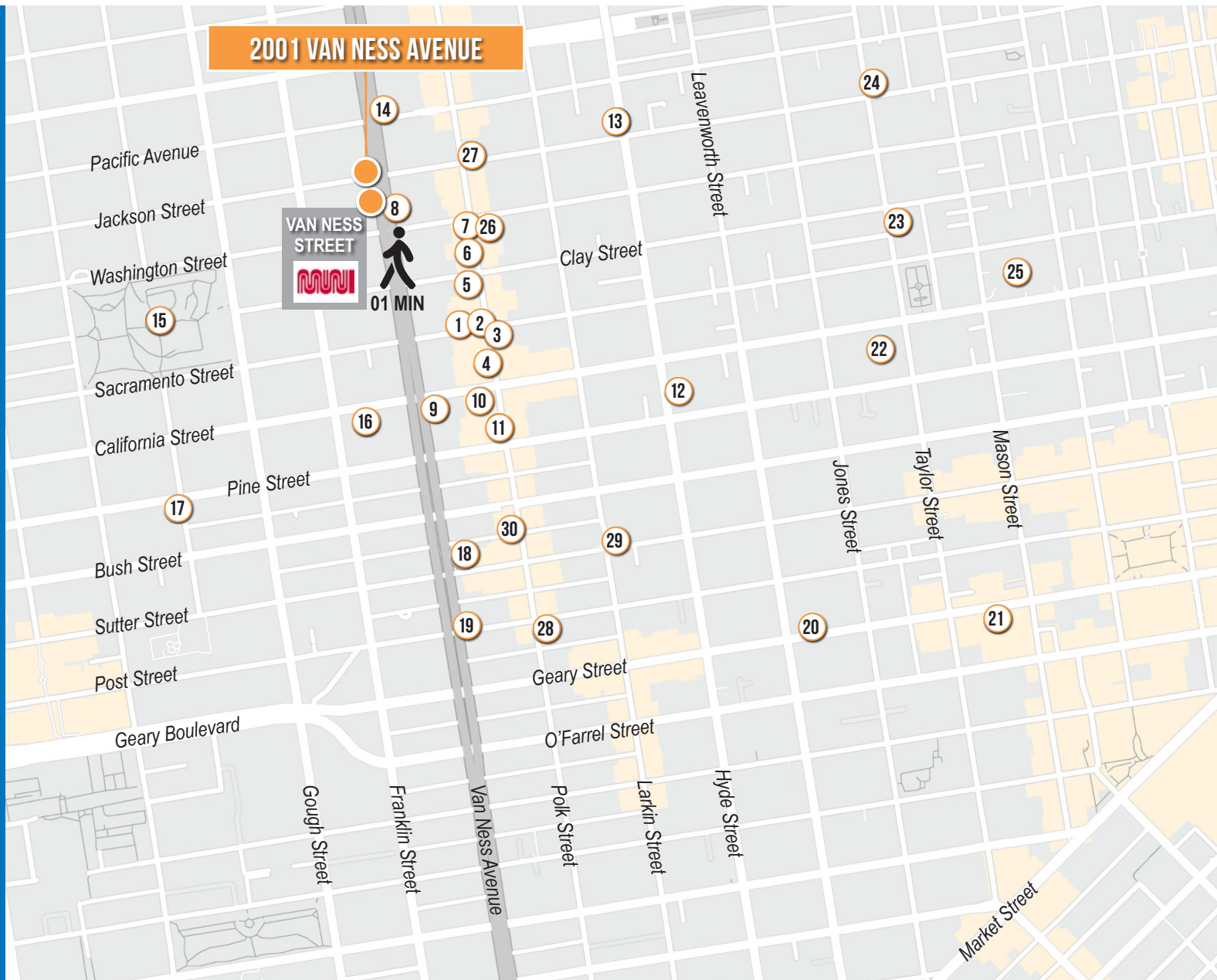


NEARBY AMENITIES

2001 Van Ness Avenue, San Francisco, CA

NEARBY AMENITIES

- 1.....Acquerello
- 2.....Toast Eatery
- 3.....Common Sage
- 4.....Ora Wine bar
- 5.....Harper & Rye
- 6.....The Cinch Saloon
- 7.....The Crepe House
- 8.....House of Prime Rib
- 9.....Starbucks
- 10.....Crustacean Restaurant
- 11.....Juniper
- 12.....Nourish Cafe
- 13.....Cocotte
- 14.....Harris' Restaurant
- 15.....Lafayette Park
- 16.....Whole Foods Market
- 17.....Octavia
- 18.....The Regency Ballroom
- 19.....24 Hour Fitness
- 20.....Mensho Tokyo SF
- 21.....The Curran Theatre
- 22.....SF Masonic Auditorium
- 23.....Nob Hill Cafe
- 24.....Cafe Isabella
- 25.....Tonga Room & Hurricane Bar
- 26.....Sorella
- 27.....Bell Tower
- 28.....Kuma Sushi + Sake
- 29.....Halal Dastarkhan Restaurant
- 30.....Mayes Oyster House



NEARBY AMENITIES

2001 Van Ness Avenue, San Francisco, CA



TCP
TOUCHSTONE
COMMERCIAL PARTNERS


DUNHILL PARTNERS WEST

2001
VAN NESS AVENUE
SAN FRANCISCO, CA

ZACH HAUPERT DRE # 01822907

415.539.1121
zhaupert@tcpre.com

TERRY EVERLEY DRE # 01864017

415.539.1108
teverley@tcpre.com

MARK HUTCHINSON CA BRE: 01076640

415.613.5080
mhutchinson@dunhillpartnerswest.com

Corp. Lic. 01112906 www.tcpre.com

The information presented has been secured from sources we believe to be reliable but we make no representations or warranties, expressed or implied, as to the accuracy of the information. Lessee must verify the information and bears all risk for any inaccuracies.

