



FOR LEASE:

East Phoenix Retail/Office Space

16624 N 32nd St | PHOENIX, AZ 85032

LEV ROSE
COMMERCIAL REAL ESTATE

TCN
MANAGEMENT
REAL ESTATE SERVICES

OFFERING SUMMARY

Address: 16624 N 32nd St,
Phoenix, AZ 85032

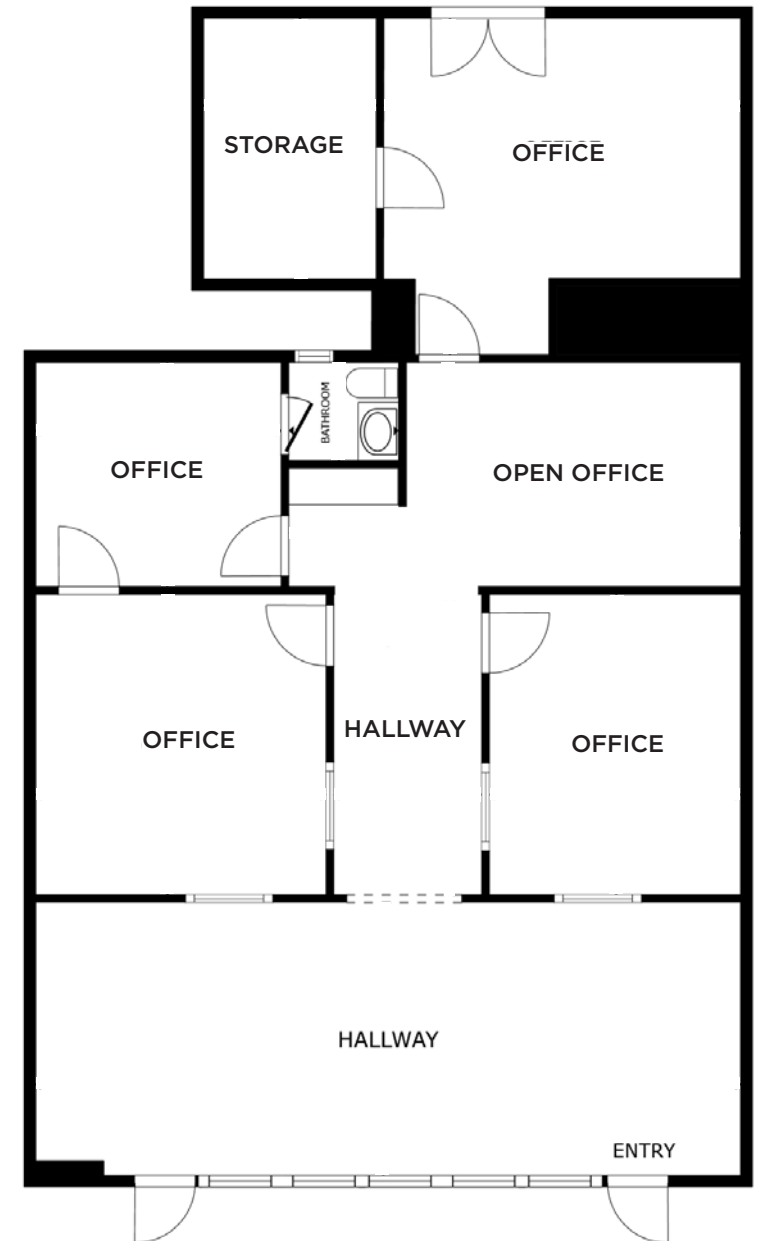
Availability: ±1,800 SF

Asking Rate: \$17.00/SF (FS)

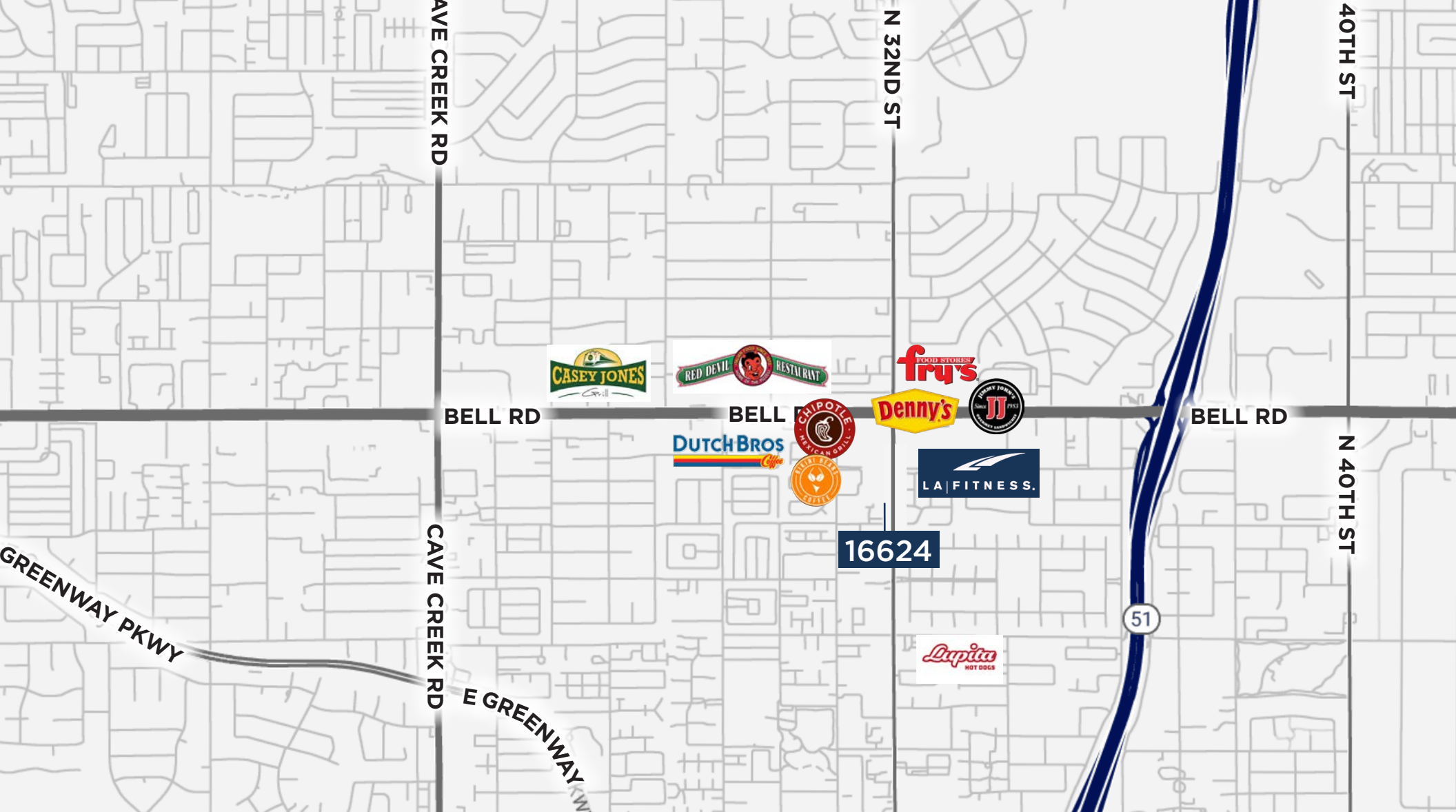
Zoning: C-3, City of Phoenix

PROPERTY HIGHLIGHTS

- Large store front windows with automatic security roll up
- Highly Visible Building Signage Fronting 32nd Street
- Close Proximity to Numerous Retail and Restaurant Establishments
- Easy Freeway Access to the Hwy 51
- Effortless Pull Up Parking Directly Out Front of the Suite



VIEW VIRTUAL TOUR



LOCATION HIGHLIGHTS



SITUATED DIRECTLY OFF
OF 32ND STREET



100+ RESTAURANTS
WITHIN 3 MILES



± 10 MINUTES FROM
PARADISE VALLEY MALL



±20 MINUTES FROM
SCOTTSDALE AIRPARK



HUNTER CHASSE

Vice President

480.289.4225

hchasse@levrose.com

BILLY COWAN

Advisor

480.294.6001

bcowan@levrose.com

LEVROSE
COMMERCIAL REAL ESTATE

TCN
COMMERCIAL
REAL ESTATE SERVICES

This information has been secured from sources believed to be reliable, but no representations or warranties are made, expressed or implied, as to the accuracy of the information. References to square footage are approximate. Buyer and tenant must verify the information and bears all risk for any inaccuracies. All quoted prices are subject to change without notice.