

# *Ocean Plaza*

**2615** PACIFIC  
COAST  
HIGHWAY



**OFFICE SUITES FOR LEASE**

2615 Pacific Coast Highway, Hermosa Beach, CA

**CBRE**



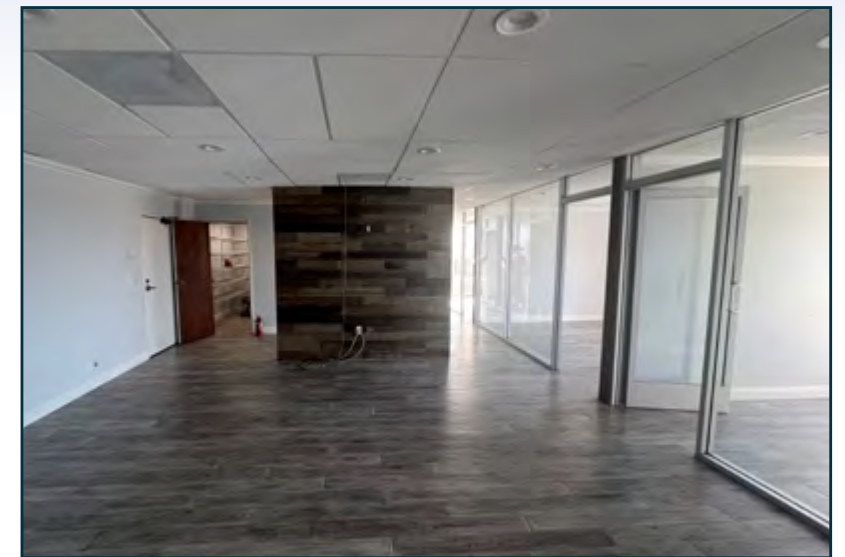


## Property Highlights

-  Desirable Hermosa Beach location
-  2 minutes to the ocean
-  Walking distance to numerous amenities
-  Abundant parking including subterranean
-  Shared kitchen and conference room

**SUITE 210** | 1,132 SF | \$4.20 FSG | **\$4,779.60 MONTHLY TOTAL**

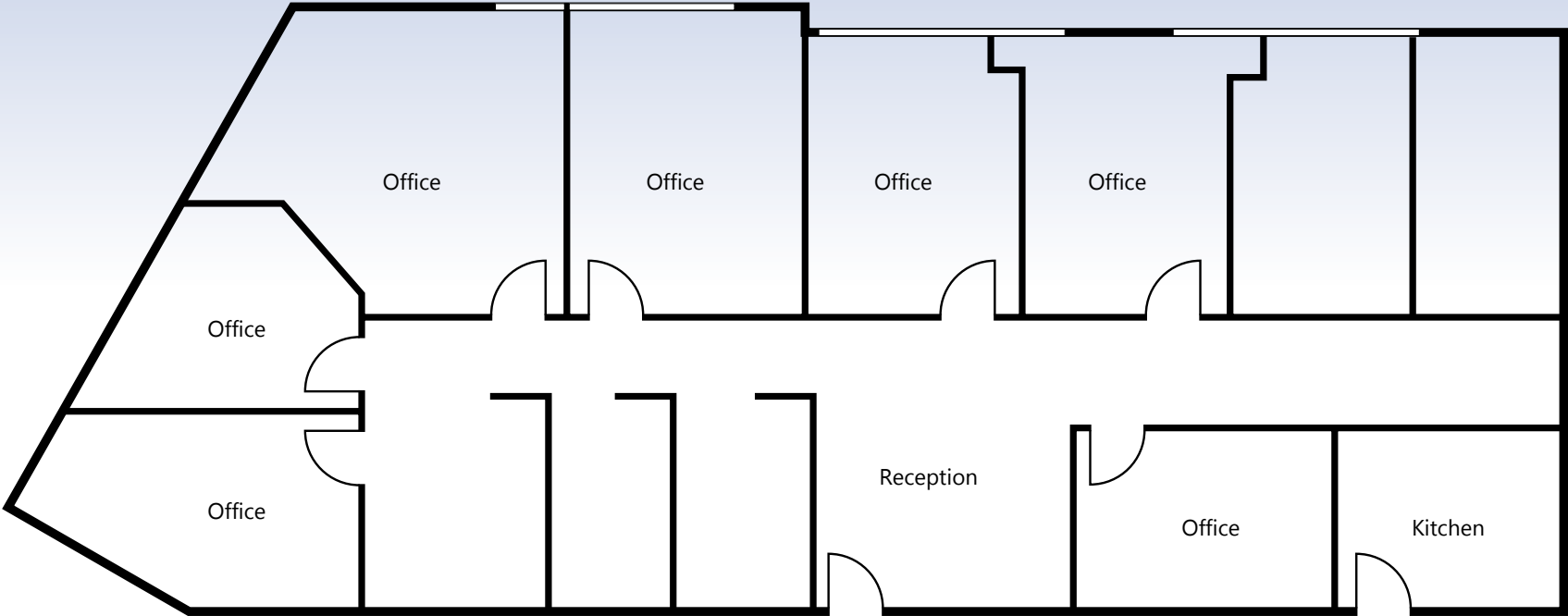
- Ocean Views
- Break Room
- Reception Area
- Recently Renovated
- Available Now



2615 Pacific Coast Highway, Hermosa Beach, CA

SUITE 218 | 1,148 SF | \$3.75FSG | \$4,305 MONTHLY TOTAL

- Ocean Views
- Built Out
- Available 3/2026



2615 Pacific Coast Highway, Hermosa Beach, CA

SUITE 321 | 1,137 SF | \$2.95 FSG | \$3,354.15 MONTHLY TOTAL

- Reception Area
- Recently Renovated
- Available Now



2615 Pacific Coast Highway, Hermosa Beach, CA



**RICHARD MELBYE**

Vice President

Lic. 02052010

+1 310 363 4831

richard.melbye@cbre.com

**JOHN LANE**

Senior Vice President

Lic. 01894667

+1 310 363 4947

john.lane@cbre.com

**OFFICE SUITES FOR LEASE**

# Ocean Plaza

2615 Pacific Coast Highway, Hermosa Beach, CA

© 2025 CBRE, Inc. All rights reserved. This information has been obtained from sources believed reliable but has not been verified for accuracy or completeness. CBRE, Inc. makes no guarantee, representation or warranty and accepts no responsibility or liability as to the accuracy, completeness, or reliability of the information contained herein. You should conduct a careful, independent investigation of the property and verify all information. Any reliance on this information is solely at your own risk. CBRE and the CBRE logo are service marks of CBRE, Inc. All other marks displayed on this document are the property of their respective owners, and the use of such marks does not imply any affiliation with or endorsement of CBRE. Photos herein are the property of their respective owners. Use of these images without the express written consent of the owner is prohibited.

**CBRE**