

FOR LEASE OR SALE

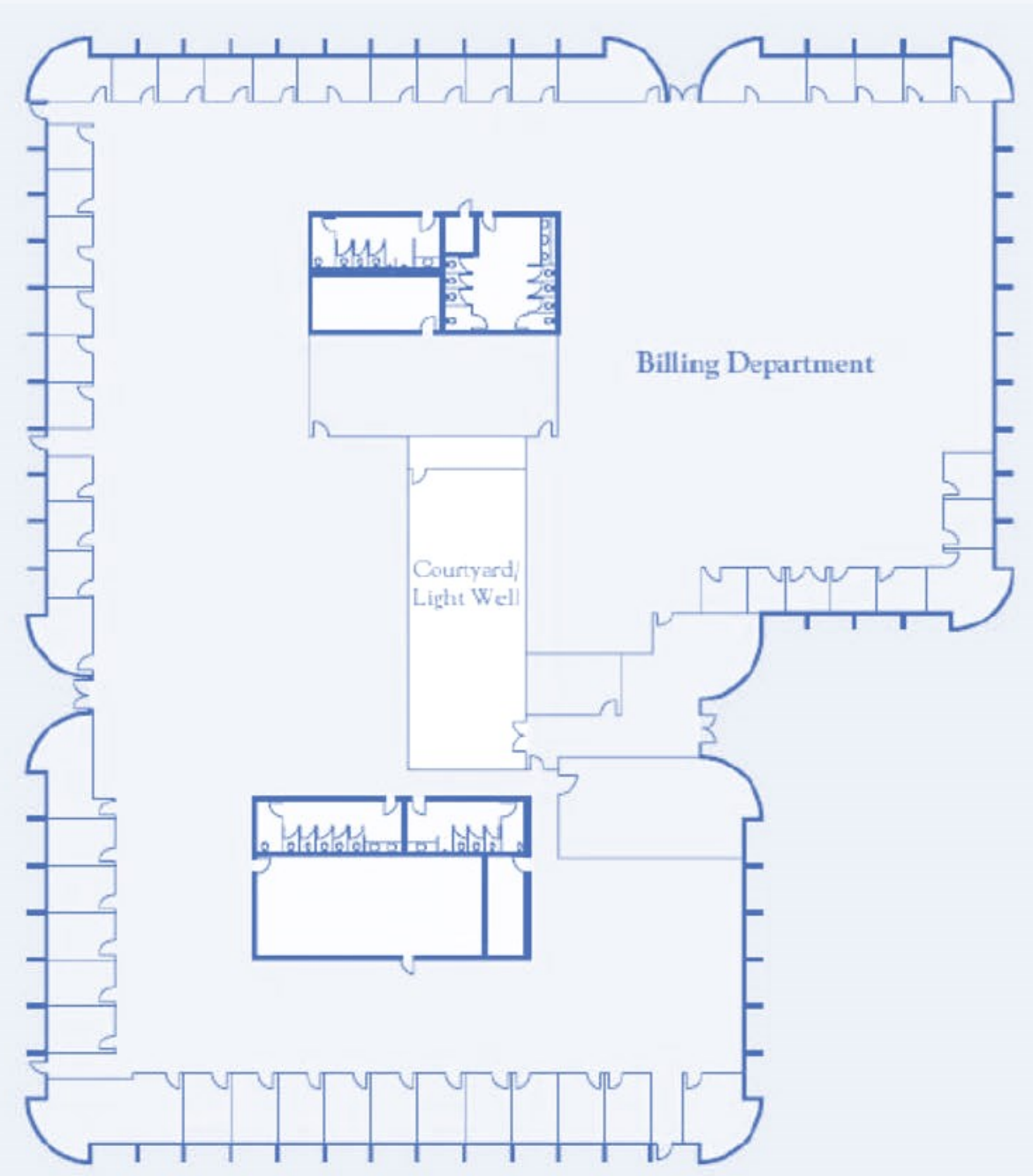
9250 AMBERTON

9250 AMBERTON PARKWAY, DALLAS, TX 75243



HIGHLIGHTS

- 38,794 SF (divisible)
- Easy Accessibility with Residential Nearby
- Excellent Location
 - Trade School
 - Laboratory
 - Office
 - Medical
 - R&D Facility
 - Flex
- Building Signage
- Instant Highway Access



**- DYNAMIC NEIGHBORHOOD -
HIGHLY AMENITIZED AREA**



PROPERTY HIGHLIGHTS

- * 38,794 SF (Divisible)
- * 3.35/1,000 Parking
- * 1,200 Amps of Power
- * 2.71 Acres
- * Two Shared Tennis Courts
- * Private Courtyard



**EXCELLENT ACCESSIBILITY
WITH MULTIPLE POINTS
OF INGRESS/EGRESS**

BROKER CONTACTS:

Pat Hanahan

+1 864 907 7014

phanahan@fobare.com

Jerrod Walla

+1 406 871 9583

jwalla@fobare.com

