

FOR LEASE

1,613 SF | \$2.75/SF/MO. NNN

Desirable Mill Building Retail Space Anchored by Monkless Belgian Ales

803 SW Industrial Way, Suite 203, Bend, OR 97702



SUITE 203: CURRENT SHELL CONDITION



SUITE 203: STAGING CONCEPT



SUITE 203: STAGING CONCEPT

PROPERTY DETAILS

Suite 203:	1,613 SF
Lease Rate:	\$2.75/SF/Mo. NNN
CAMs:	Est. at \$0.85/SF/Mo.
Delivery:	Vanilla Shell Condition
Zoning:	Mixed-Use Riverfront (MR)
Parking:	Ample onsite parking

HIGHLIGHTS

- Versatile open retail space with two restrooms
- Desirable mill building overlooking the River
- Co-tenants include Monkless Belgian Ales, Landmark Mortgage, Power Technology, Accurate Bookkeeping, and Project Recover
- Close proximity to excellent restaurants, the Old Mill District, the Box Factory, the new Jackstraw mixed-use development, Market of Choice, the Deschutes River Trail and the Bend Whitewater Park

Luke Ross, Broker | Russell Huntamer, CCIM
Eli Harrison, Broker

600 SW Columbia St., Ste. 6100 | Bend, OR 97702

541.383.2444 | www.CompassCommercial.com

COMPASS
COMMERCIAL

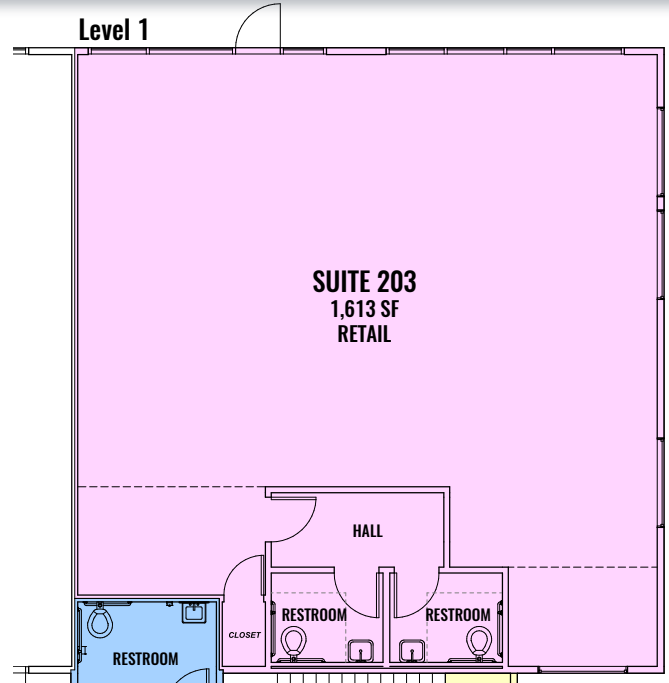
REAL
ESTATE
SERVICES

FOR LEASE

1,613 SF | \$2.75/SF/MO. NNN

Desirable Mill Building Retail Space Anchored by Monkless Belgian Ales

803 SW Industrial Way, Suite 203, Bend, OR 97702



Brokers are licensed in the state of Oregon. This information has been furnished from sources we deem reliable, but for which we assume no liability. This is an exclusive listing. The information contained herein is given in confidence with the understanding that all negotiations pertaining to this property be handled through Compass Commercial Real Estate Services. All measurements are approximate.



Luke Ross
Broker
Cell 541.480.6144
lross@compasscommercial.com



Russell Huntamer, CCIM
Partner, Principal Broker
Cell 541.419.2634
rh@compasscommercial.com



Eli Harrison
Broker
Cell 541.977.2890
eharrison@compasscommercial.com

COMPASS COMMERCIAL
REAL ESTATE SERVICES