

Warehouse Space For Lease

SILVER SPRING, MARYLAND

Exceptionally
Clean, Newly
Renovated
Warehouse &
Showroom
Space !!!

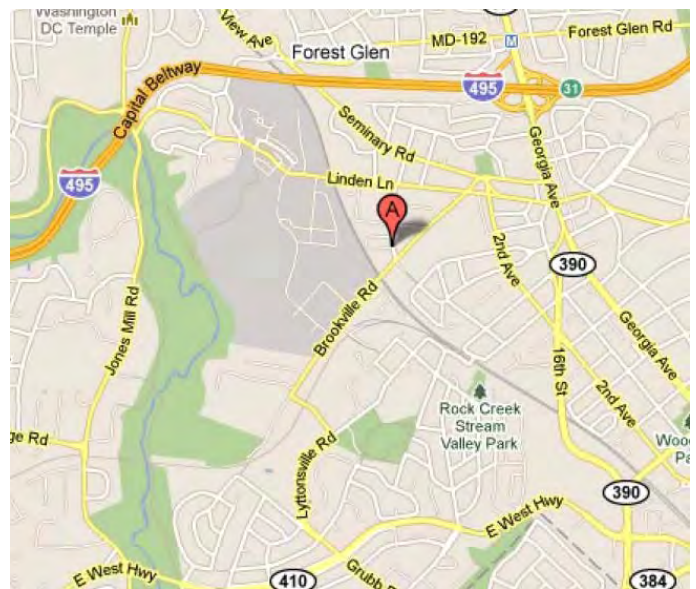
2201-2353 DISTRIBUTION CIRCLE



1. Drive-in Bays
2. Space is Exceptionally Clean
3. I-1 Zoning
4. Excellent Location!!!
5. Minutes to Georgia Avenue, North West, DC and 495

The following spaces are available in the above warehouse:

**1,360 sf Drive-In Warehouses
2,720 sf Drive-In Warehouse w/ HVAC
5,440 sf Double Warehouse**



**FOR MORE INFORMATION
PLEASE CONTACT:**

ROBERT BLUM
301-309-9500
ROBERT@KOSSOWMANAGEMENT.COM

ANDREW KOSSOW
301-309-9500
ANDREW@KOSSOWMANAGEMENT.COM

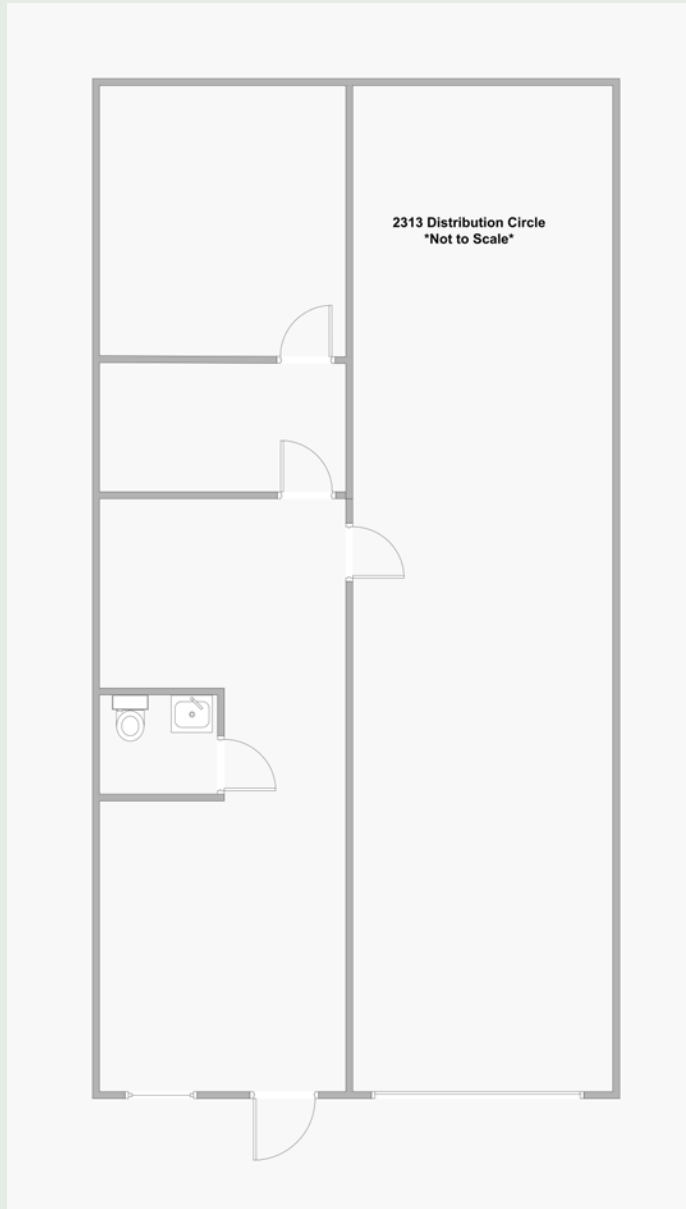
Kossow Management Corp.

1,360 sf Drive-In Warehouse

Warehouse Space Includes:

- 4 Finished Offices (can be reduced to 2)
- Private restroom
- 10' Drive-In Overhead Door
- Gas Heating

2313 Distribution Circle, Silver Spring, MD



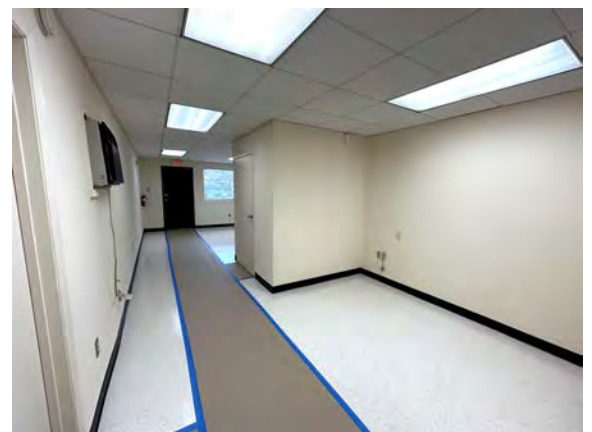
* Drawing not to scale



Warehouse Interior



Warehouse Interior



Front Offices

Kossov Management Corp.

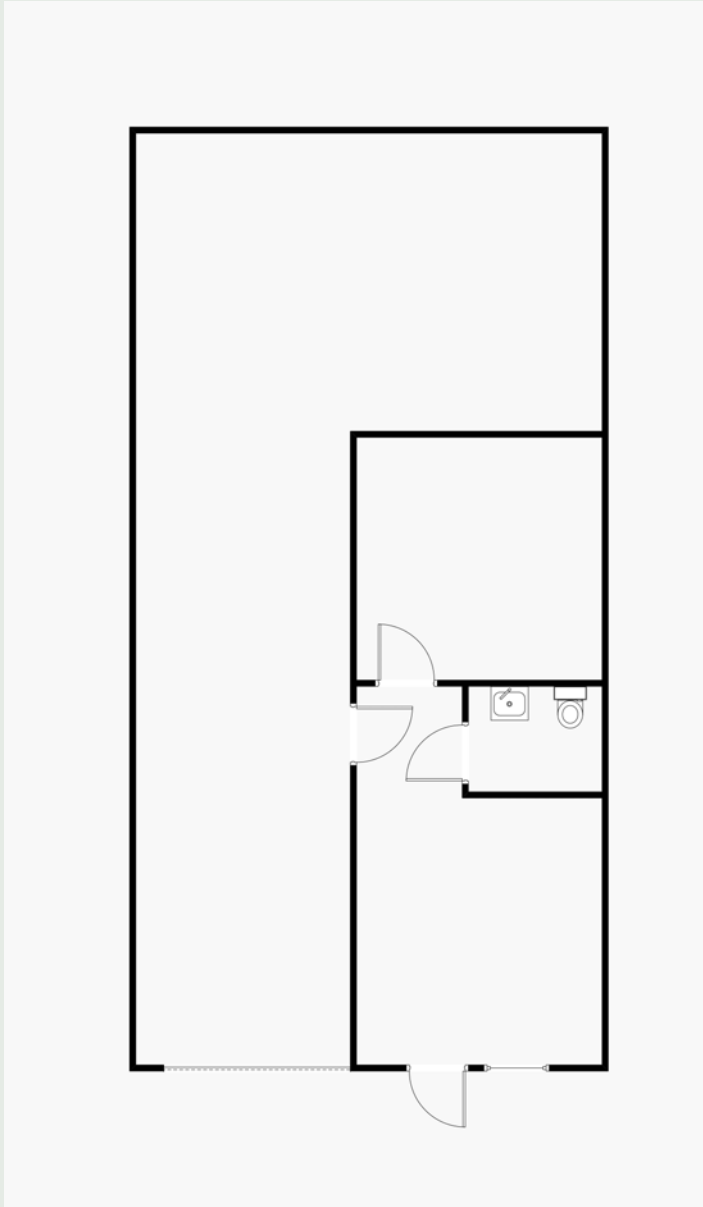
(301) 309-9500

1,360 sf Drive-In Warehouse

Warehouse Space Includes:

- Finished Office
- Private restroom
- 10' Drive-In Overhead Door
- Gas Heating

2333 Distribution Circle, Silver Spring, MD



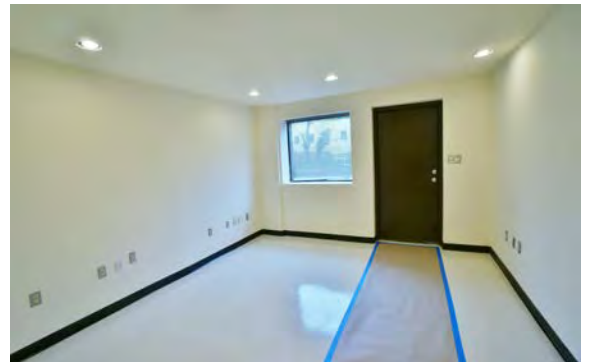
* Drawing not to scale



Warehouse Interior



Warehouse Interior



Front Office

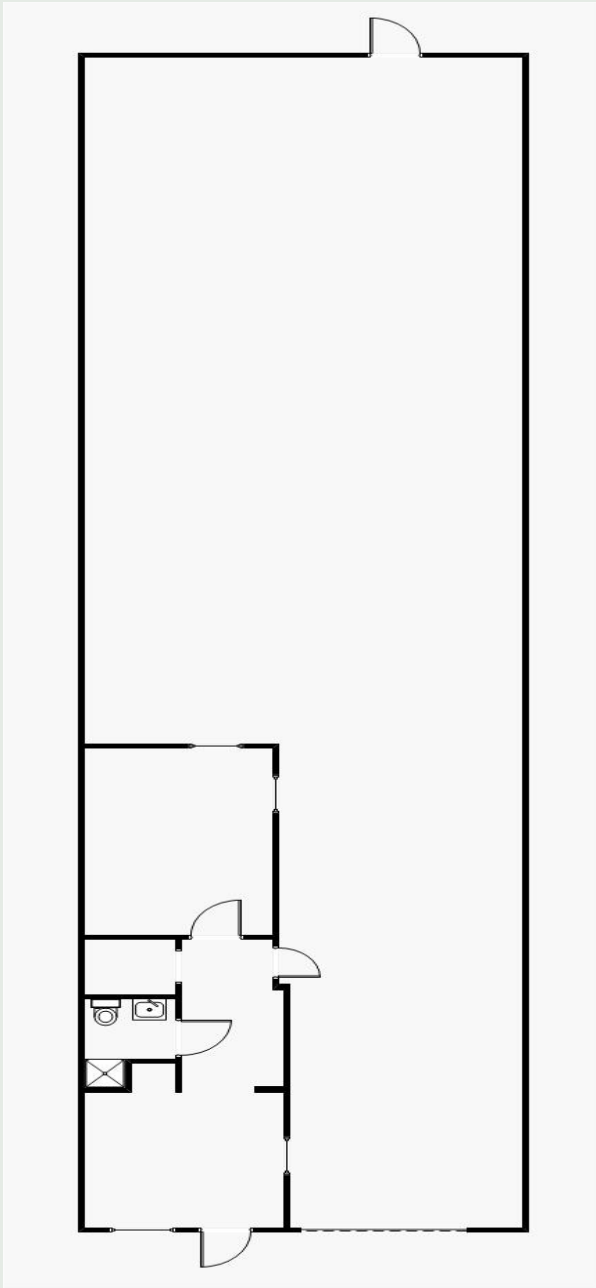
Kossow Management Corp.
(301) 309-9500

2,720 sf Drive-In Warehouse

Warehouse Space Includes:

- 2 Finished Offices
- Private restroom
- Kitchenette
- 10' Drive-In Overhead Door
- HVAC THROUGHOUT

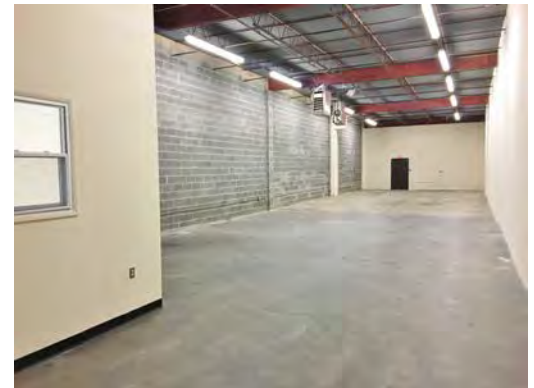
2251 Distribution Circle, Silver Spring, MD



*Drawing not to scale



Sample Warehouse



Sample Warehouse



Sample Front Office

Kossow Management Corp.

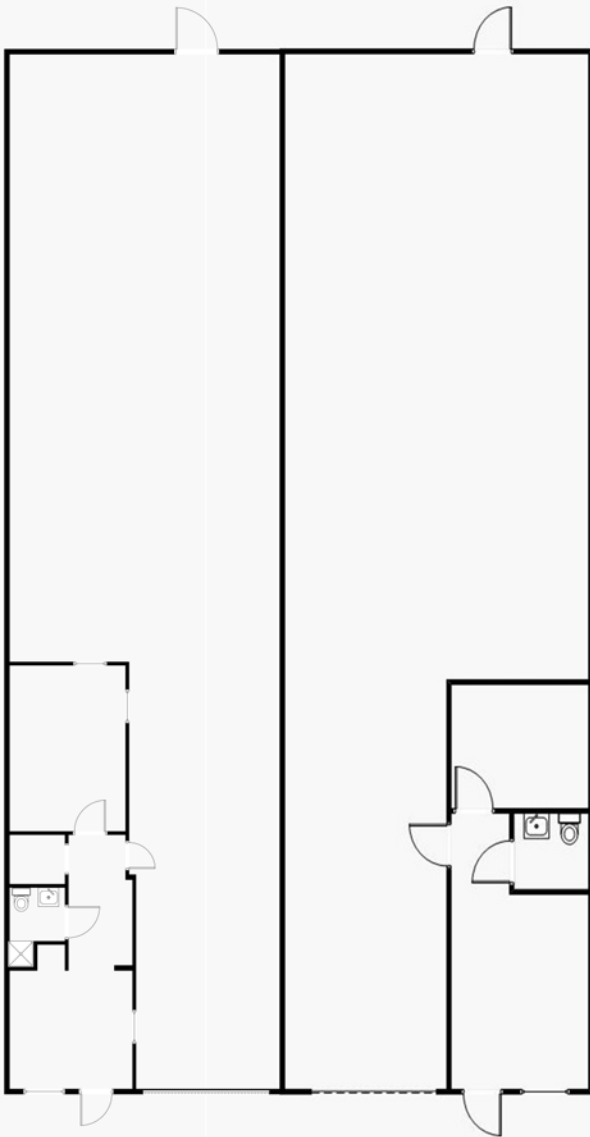
(301) 309-9500

5,440 sf Double Bay Drive-In Warehouse

Warehouse Space Includes:

- 4 Finished Offices
- 2 Private restroom
- Kitchenette
- Two (2) 10' Drive-In Overhead Door
- HVAC in half the space

2247-2251 Distribution Circle



*Drawing not to scale



Double Bay Doors



Sample Warehouse



Sample Front Office

Kossov Management Corp.

(301) 309-9500