

## OFFERING SUMMARY

<b>Address</b>	Cember Way Summerville, SC 29483
<b>Zoning</b>	Light Industrial
<b>County</b>	Berkeley County
<b>Municipality</b>	North Charleston
<b>Lease Rate</b>	\$5,000/Month
<b>Laydown Yard</b>	0.9 Acres

## THE PROPERTY

Bell Wright Business Park is located just off of Highway 78 in Summerville, 4 miles South of Exit 199 on I-26. The industrial park is in close proximity to I-26 connecting it to The Charleston Port Terminals, The Charleston International Airport and local manufacturers, Mercedes, Boeing, Volvo and Bosch.

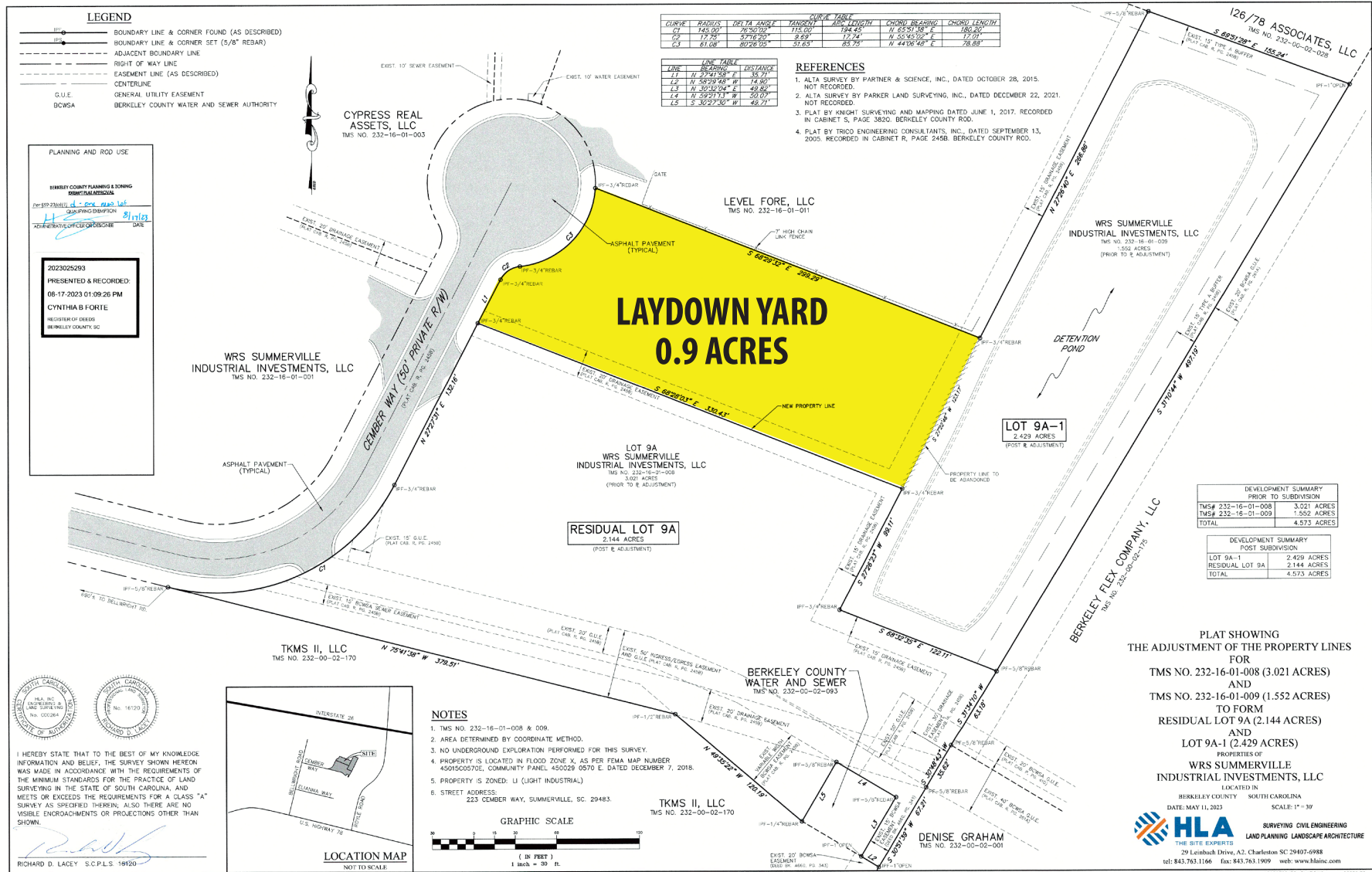
The laydown yard is surrounded by established businesses and offers excellent street front visibility within the industrial park.

**Grace Moring**

864.518.6808

gmoring@wrsrealty.com

# CEMBER WAY - LAYDOWN YARD



The information contained herein was obtained from sources believed reliable, however, WRS Inc. makes no guarantees, warranties, or representations as to the completeness or accuracy thereof.

The presentation of this property is submitted subject to errors, omissions, change of tenants or conditions prior to sale or lease, or withdrawal without notice.

WRS Inc. | 410 Mill Street, Bldg. 1, Suite 200 | Mount Pleasant, SC 29464 | main 843.654.7888 | fax 843.654.7889