



NEIGHBORHOOD

**ISLANDVIEW**

LOCATION

**SE CORNER OF KERCHEVAL  
AND TOWNSEND**

SPACE TYPE

**RETAIL**

The Townsend at 7410 Kercheval is the first flagship mixed use development by Banyan Investments at the entrance to the Villages. This new construction building in Islandview offers state of the art suites. Starting at 1,200 square feet ideal for retail and restaurant tenants with patio dining available. In addition to onsite parking, The Townsend is located on the City of Detroit's Park Streetscape Program connecting neighborhoods with business corridors.

ASKING RENT

**\$25 per RSF NNN**

NEIGHBORS

The Empowerment Plan, Sister Pie, Belle Isle, Red Hook, Marrow, Butzel Family Recreation Center, Saint Charles, Two Birds, Faircloth, Eugenie, Metropolitan Bar + Kitchen, Yum Village and growing.

SIZE

**1,200 - 9,000 SF**

ONSITE PARKING

**20+ SPACES**

CEILING HEIGHTS

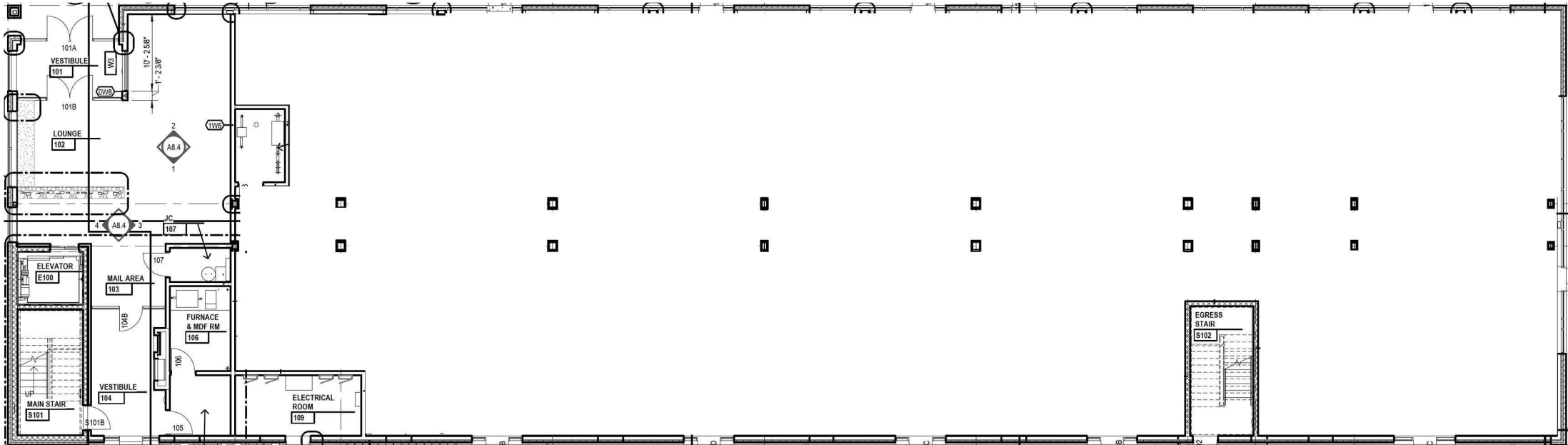
**14'**

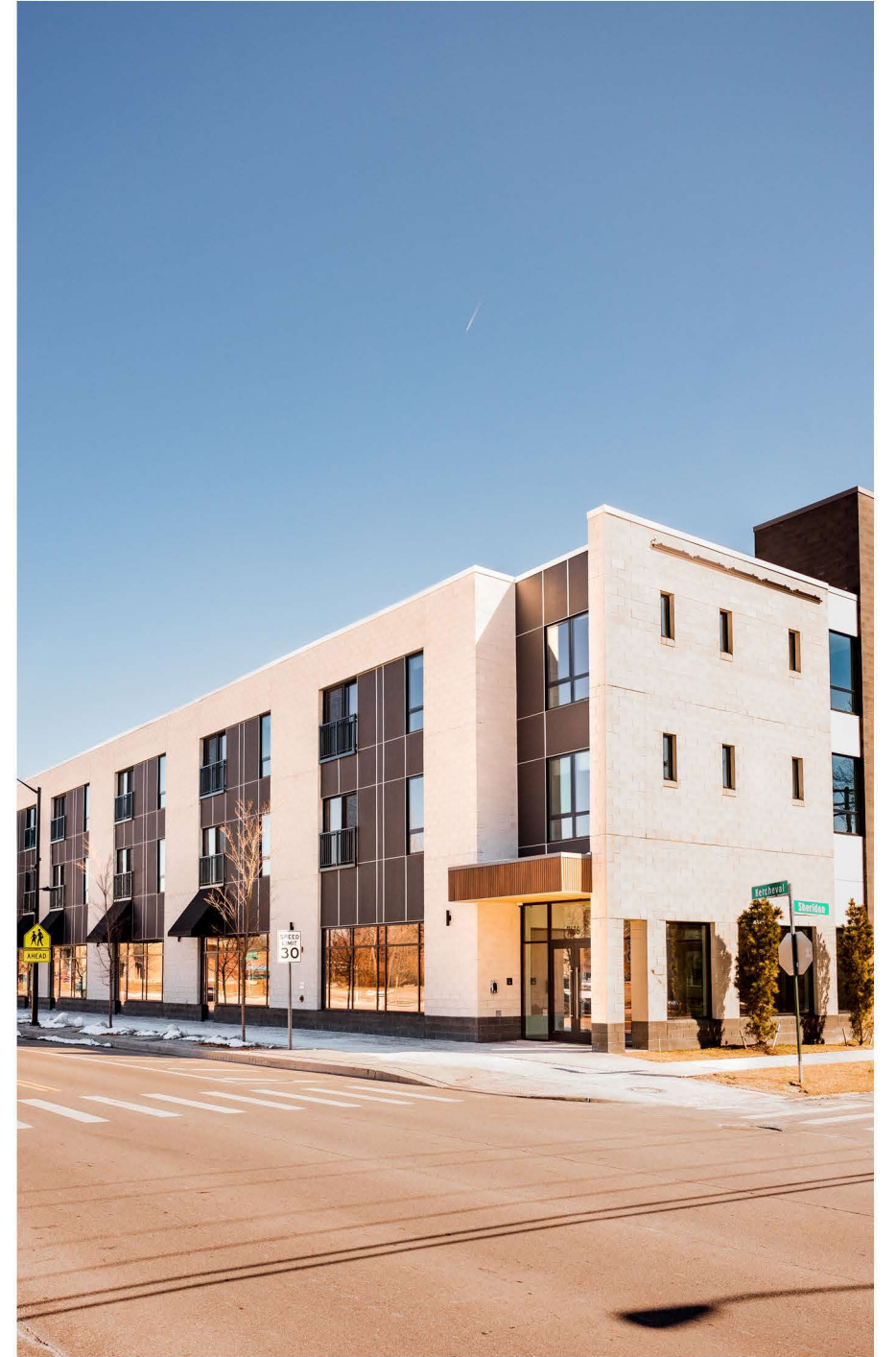
# THE TOWNSEND

7410 KERCHEVAL AVE  
ISLANDVIEW

## FEATURES

- New Construction
- Large Storefront Windows
- Dual Entrance from Kercheval and Private Parking
- Onsite Parking and Non Metered Street Parking









The Jeffersonian →

Belle Isle →

Indian Village →

Sister Pie →

← Marrow

West Village →

← Eugenie,  
Red Hook,  
YumVillage,  
Metropolitan  
Bar + Kitchen

← Saint  
Charles  
Residences  
and Terraces

Butzel Playground →

**7410  
Kercheval**  
→  
1,200-9,000 RSF  
Available

← Onsite Parking

Future Development →

A TRUSTED AND RESPECTED  
MEMBER OF THE COMMUNITY,  
O'CONNOR REAL ESTATE  
BRINGS 20 YEARS OF  
EXPERIENCE AND EXPERTISE  
TO THE COMMERCIAL OFFICE  
AND RETAIL MARKET.

For more information about the retail spaces  
available at The Townsend,  
please contact O'Connor Real Estate

**Vincent Mazzola**  
**+ 313 704 2678**  
**vincent@oconnordetroit.com**

**O'Connor** Real Estate

THE DEVELOPER



BANYAN INVESTMENTS  
[www.banyandirect.com](http://www.banyandirect.com)

The information used in this marketing material was taken from sources believed to be reliable. O'Connor Real Estate makes no representation, warranty, or endorsement made as to the accuracy, reliability, adequacy, or completeness of any information or analysis contained herein and disclaims any and all liability that may be based on such information, errors therein or omissions therefrom. You and your advisors should conduct a careful and independent investigation of the property to determine your satisfaction with the suitability of the property for your needs.