

# For Lease | Highly Visable End Cap

217 Fisherville Rd, Concord, NH 03867



## Emerald Plaza

### Property features:

- Prime Location
- High Visibility
- Ample Parking
- Generous TI Allowance
- Flexible Layout



### About:

217 Fisherville Road offers a prime location in a busy neighborhood center within North Concord's vibrant retail corridor. With excellent visibility, full signalized access via two curb cuts, and abundant on-site parking, the property is ideally suited for a wide range of uses including retail, auto parts, dental, spa, entertainment, showroom, photography, physical therapy, massage, and other professional services. A contractor has confirmed that nearly all interior walls can be removed, allowing for a flexible open-concept layout tailored to your business needs. The property also features flexible lease terms and generous improvement allowances, making it an excellent opportunity for tenants seeking a highly adaptable and accessible space.



217 Fisherville Rd, Concord, NH 03867

# For Lease | Highly Visable End Cap

217 Fisherville Rd, Concord, NH 03867



## Property Information:



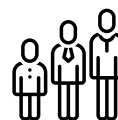
### Population

1 mile: 6,348  
3 miles: 16,633  
5 miles: 36,133



### Median Income

1 mile: \$99,111  
3 miles: \$108,287  
5 miles: \$109,465



### Median Age

1 mile: 41 years  
3 miles: 42 years  
5 miles: 43 years

---

**PRICE** // \$11.00 NNN

---

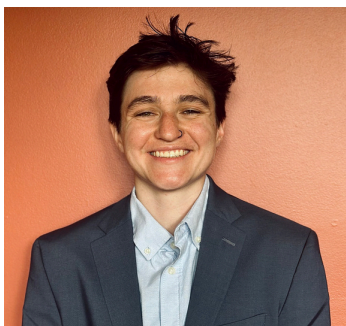
**SPACE** // 1,895 SF

---

**ZONING** // GC - General Commercial

---

## Advisors



### Grace Moore

Advisor

(603) 717-5546  
scott.franklin@svn.com

### Jesse Hepler

Managing Director

(603) 377-0309  
brian.dano@svn.com



217 Fisherville Rd, Concord, NH 03867