



**FOR SUBLEASE**  
Call for Details



**SITE 8.3± ACRES**

- Zoned HI under the Berkley County
- View zoning ordinance [here](#)



**SHOP 7,000± SF**

- 3 drive-in bays

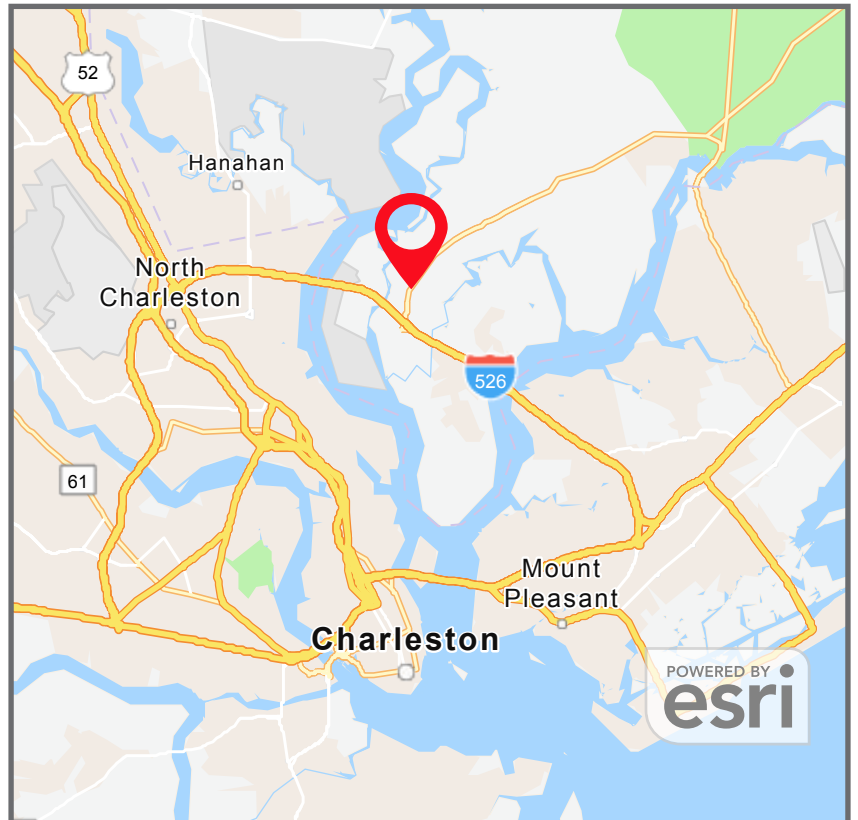


**OFFICE 2,000± SF**



**LOCATION**

- Well located with convenient I-525 access



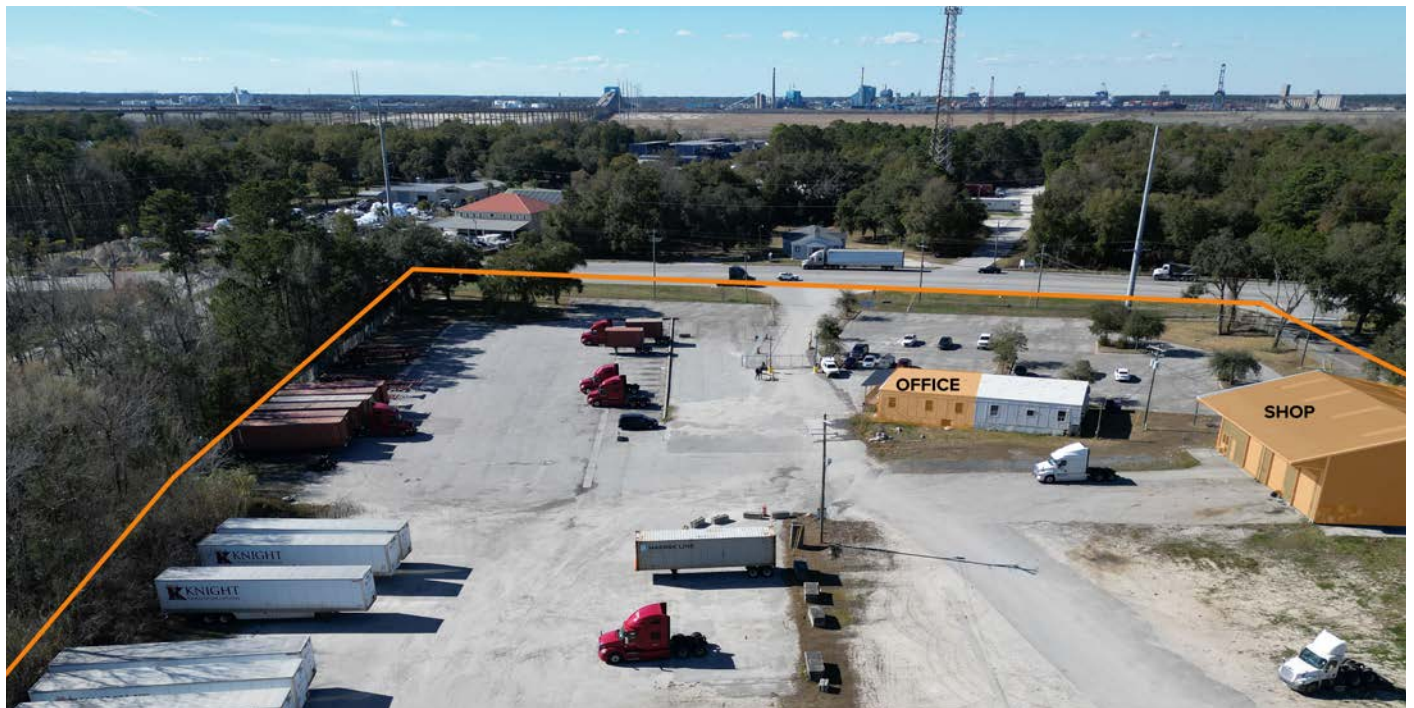
**CONTACT US**



Eric McFarlin  
Principal  
336.996.2550  
[ericm@burrtemkin.com](mailto:ericm@burrtemkin.com)

Parker Dotson  
Broker  
336.682.2560  
[parker@burrtemkin.com](mailto:parker@burrtemkin.com)

935 E. Mountain St.  
Suite O  
Kernersville, NC 27284



## CONTACT US



Eric McFarlin  
Principal  
336.996.2550  
[ericm@burrtemkin.com](mailto:ericm@burrtemkin.com)

Parker Dotson  
Broker  
336.682.2560  
[parker@burrtemkin.com](mailto:parker@burrtemkin.com)

935 E. Mountain St.  
Suite O  
Kernersville, NC 27284



## CONTACT US



Eric McFarlin  
Principal  
336.996.2550  
[ericm@burrttemkin.com](mailto:ericm@burrttemkin.com)

Parker Dotson  
Broker  
336.682.2560  
[parker@burrttemkin.com](mailto:parker@burrttemkin.com)

935 E. Mountain St.  
Suite O  
Kernersville, NC 27284



## CONTACT US



Eric McFarlin  
Principal  
336.996.2550  
[ericm@burrttemkin.com](mailto:ericm@burrttemkin.com)

Parker Dotson  
Broker  
336.682.2560  
[parker@burrttemkin.com](mailto:parker@burrttemkin.com)

935 E. Mountain St.  
Suite O  
Kernersville, NC 27284