

For Lease | \$21 PSF Full Service | 902 - 27,585 SF Available
4370 W. 109th Street Overland Park, KS 66211



Well-located Class A Office Space Available in Overland Park
I-435 Visibility with 149,000+ Cars Per Day
Entrances at Grade Level on All Floors | Parking 5.15 Per 1,000 SF
Total SF Available: 54,561



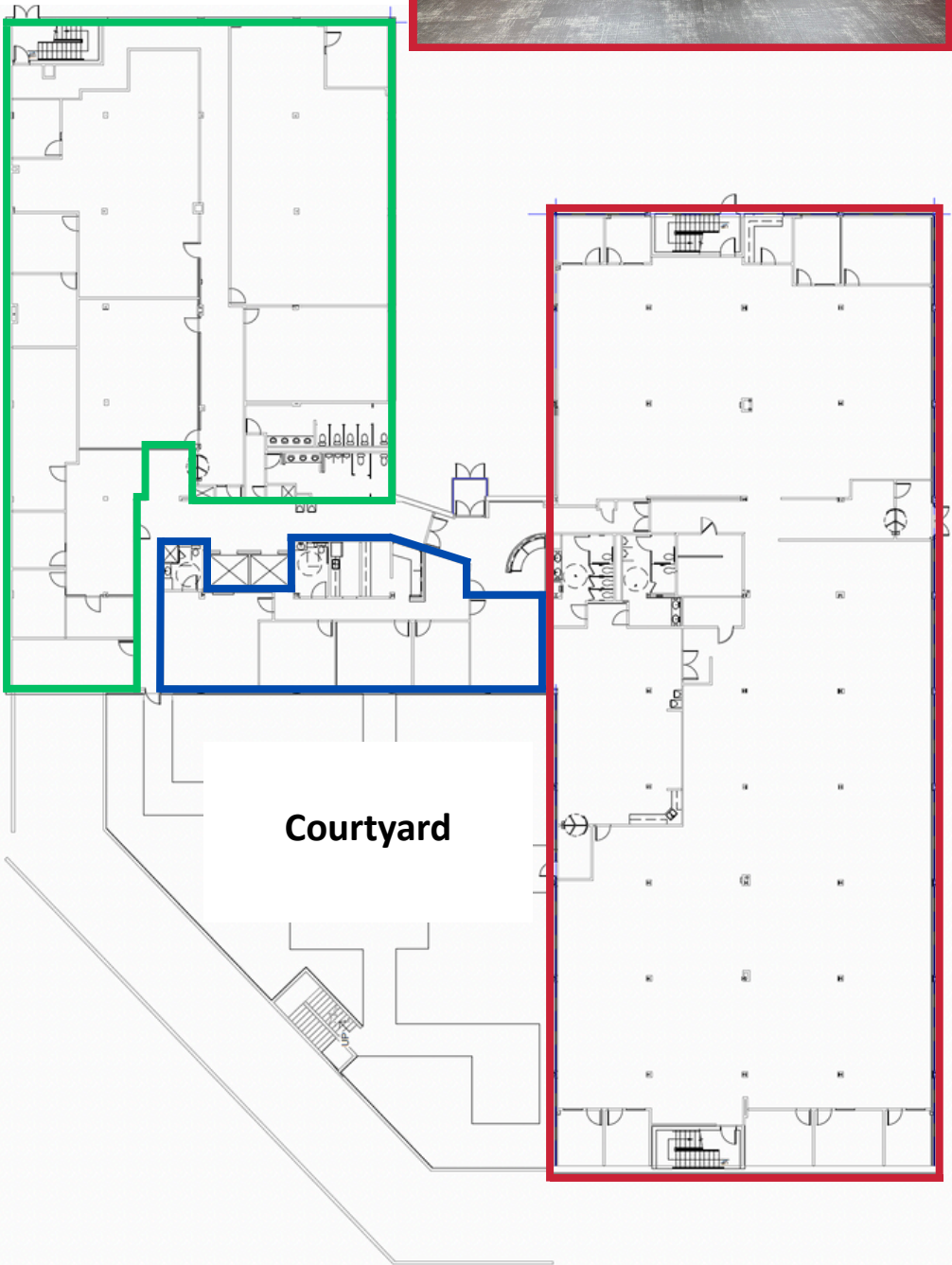
Josh Haith
Josh@Haith.com


Haith
& Company, Inc.
Real Estate Services

O: (913) 888-3456 x 7
www.Haith.com

For Lease | \$21 PSF Full Service | 902 - 27,585 SF Available
4370 W. 109th Street Overland Park, KS 66211

1st Floor 28,600 SF Available
Suite 100 15,600 SF
Suite 101 3,500 SF
Suite 102 9,500 SF



Josh Haith
Josh@Haith.com



O: (913) 888-3456 x 7
www.Haith.com

For Lease | \$21 PSF Full Service | 902 - 27,585 SF Available
4370 W. 109th Street Overland Park, KS 66211

2nd Floor | 25,961 SF Available

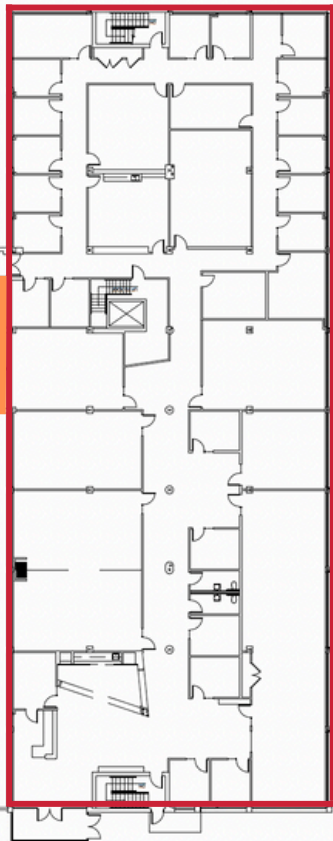
Suite 200 | 18,075 SF

Suite 201 | 2,850 SF

Suite 203 | 902 SF

Suite 220 | 2,634 SF

Suite 224 | 1,500 SF |
4 Private Offices - 3 Offices w/ Sinks

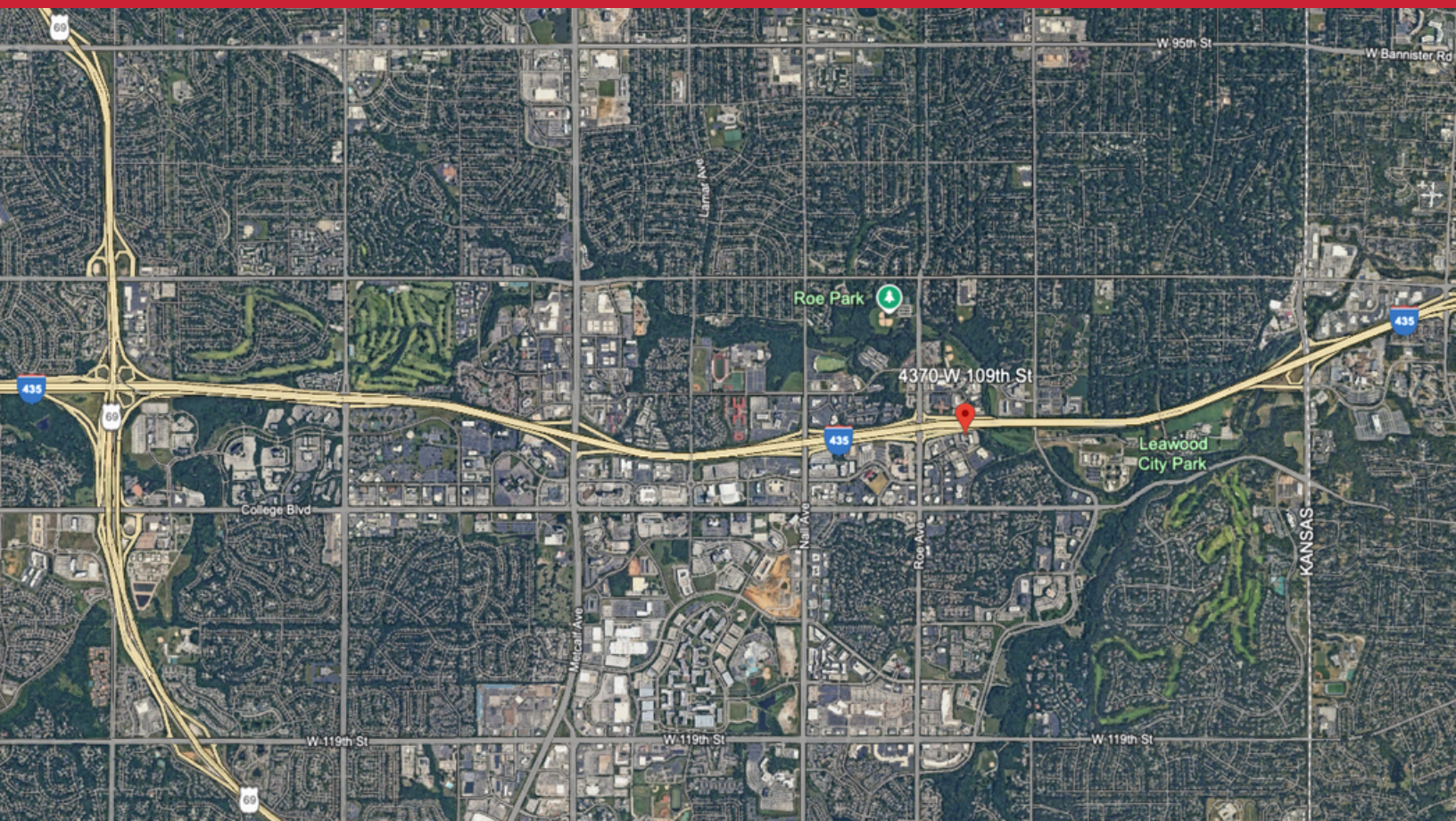


Josh Haith
Josh@Haith.com



O: (913) 888-3456 x 7
www.Haith.com

For Lease | \$21 PSF Full Service | 902 - 27,585 SF Available
4370 W. 109th Street Overland Park, KS 66211



Prime Overland Park Location at I-435 & Roe Ave.

State Line	2.0 Miles
Metcalf Ave	1.8 Miles
69 Highway	3.9 Miles
119th Street	1.4 Miles