

Eastridge Medical Dental Center

2593 S KING ROAD, SAN JOSE, CA 95122



Property Description

Direct lease with the landlord
Existing dental buildout
Tenant improvements may be available

Location Description

Eastridge Medical Dental Center is located just off Tully Rd, with easy access to Hwy 101 and a variety of amenities just next door. Nearby tenants include both major chain retailers, like CVS, Lion Supermarket, and Starbucks, as well as local small businesses, making 2593 S King Rd a convenient and high-visibility location.

Offering Summary

Lease Rate:	Negotiable
Available SF:	1,400 SF
Lot Size:	1.06 Acres
Building Size:	13,440 SF

Demographics	1 Mile	2 Miles	3 Miles
Total Households	7,093	30,000	64,838
Total Population	28,187	123,513	259,325
Average HH Income	\$68,456	\$78,481	\$79,856

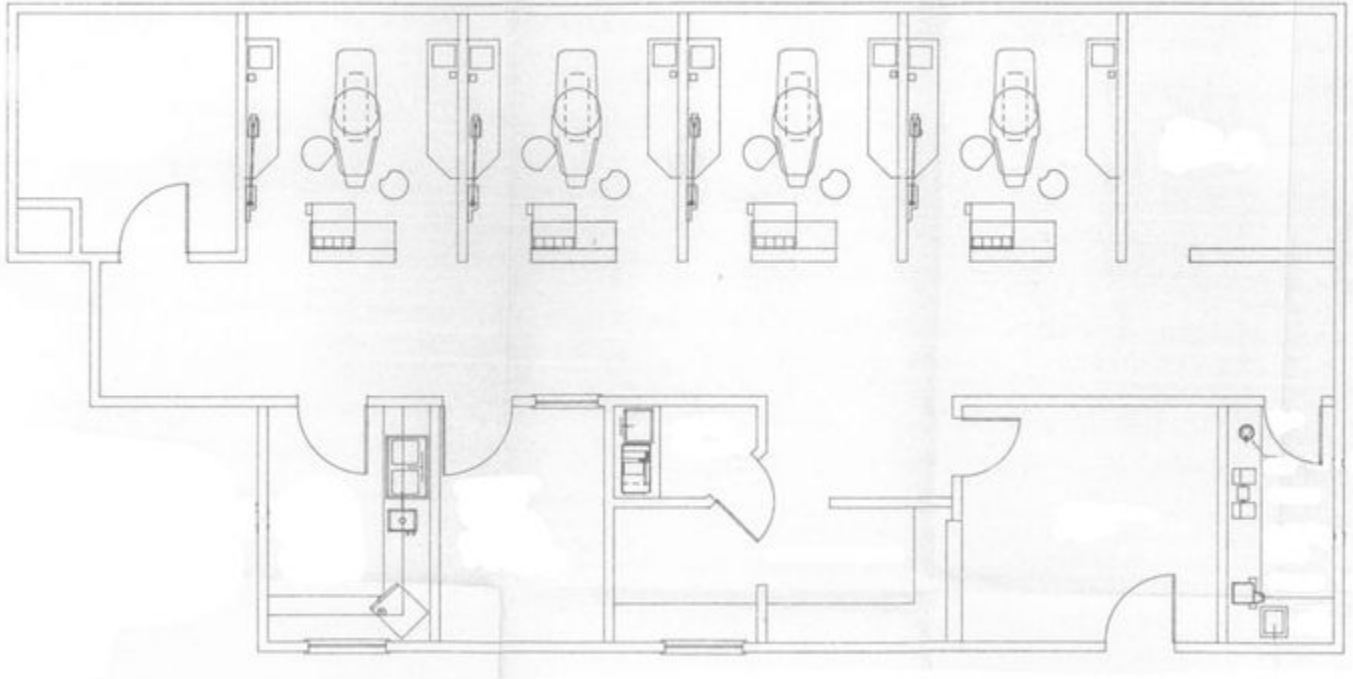


NAI Northern California
NAINORCAL.COM

Douglas Sharpe
Executive Vice President
dsharpe@nainorcal.com
408.740.7224
CalDRE #00693583

Lidia Buckovic
Transaction Manager
lbuckovic@nainorcal.com
408.740.7225
CalDRE #02064692

Additional Photos



Location Information



For More Information

Douglas Sharpe
Executive Vice President
dsharpe@nainorcal.com
408.740.7224
CalDRE #00693583

Lidia Buckovic
Transaction Manager
lbuckovic@nainorcal.com
408.740.7225
CalDRE #02064692