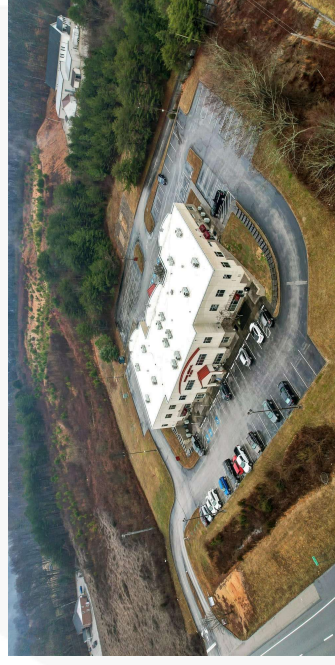
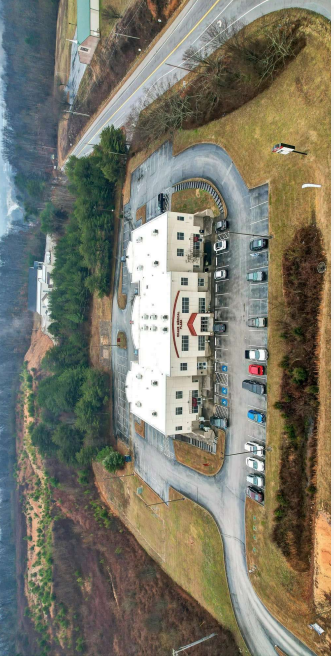
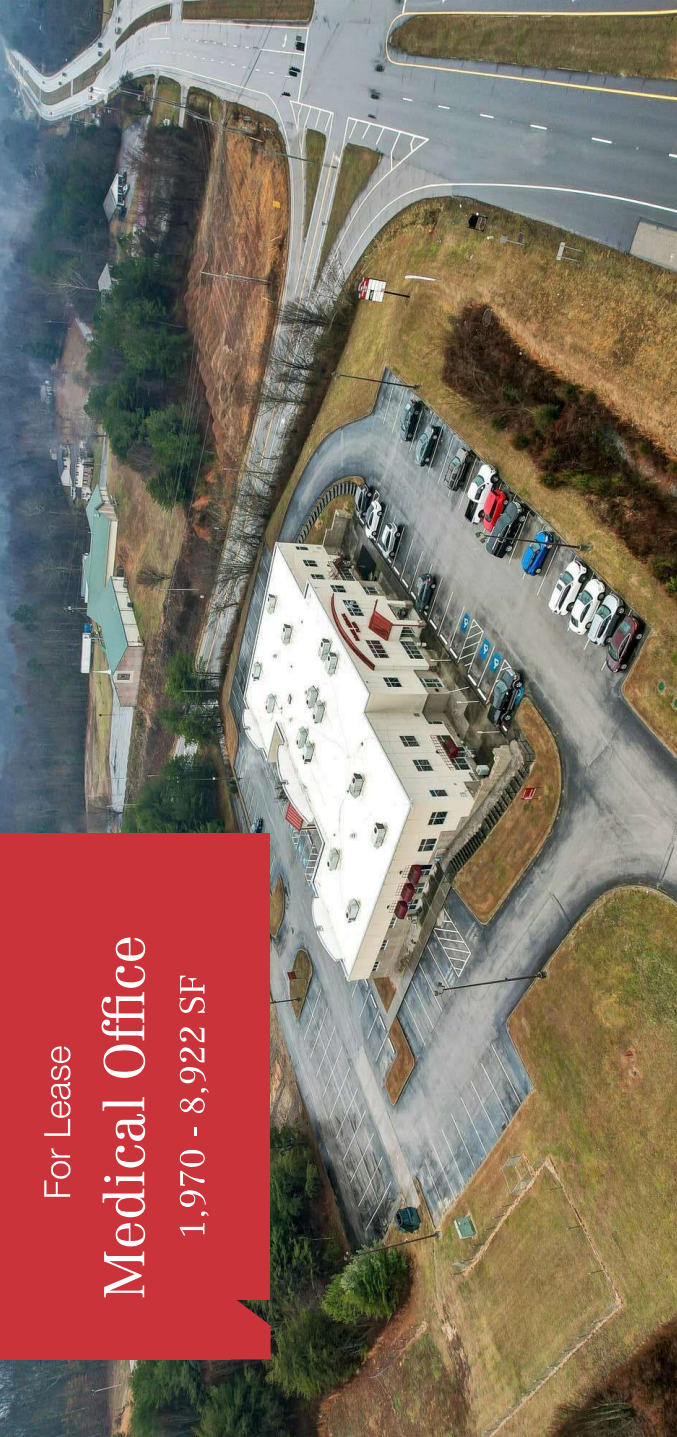


For Lease
Medical Office
 1,970 - 8,922 SF



Roane Medical Plaza

2497 S Roane St
 Harriman, TN 37748

Property Highlights

- High profile medical office building
- Great location corner of Hwy 382 | Roane St
- Ground level access in the back, side access
- Lobby, exam rooms, kitchen/break, bathrooms

Units:

Suite 210 - 2353 SF
 Suite 220 - 2004 SF
 Suite 230 - 1970 SF
 Suite 240 - 2595 SF

*Contiguous - 8,922 SF Available

For more information

Michelle Gibbs
 O: 865 531 6400 | C: 865 228 4264
 mgibbs@koellamoore.com

Ryan McElveen, MBA
 O: 865 531 6400 | C: 865 567 0232
 rmcelveen@koellamoore.com

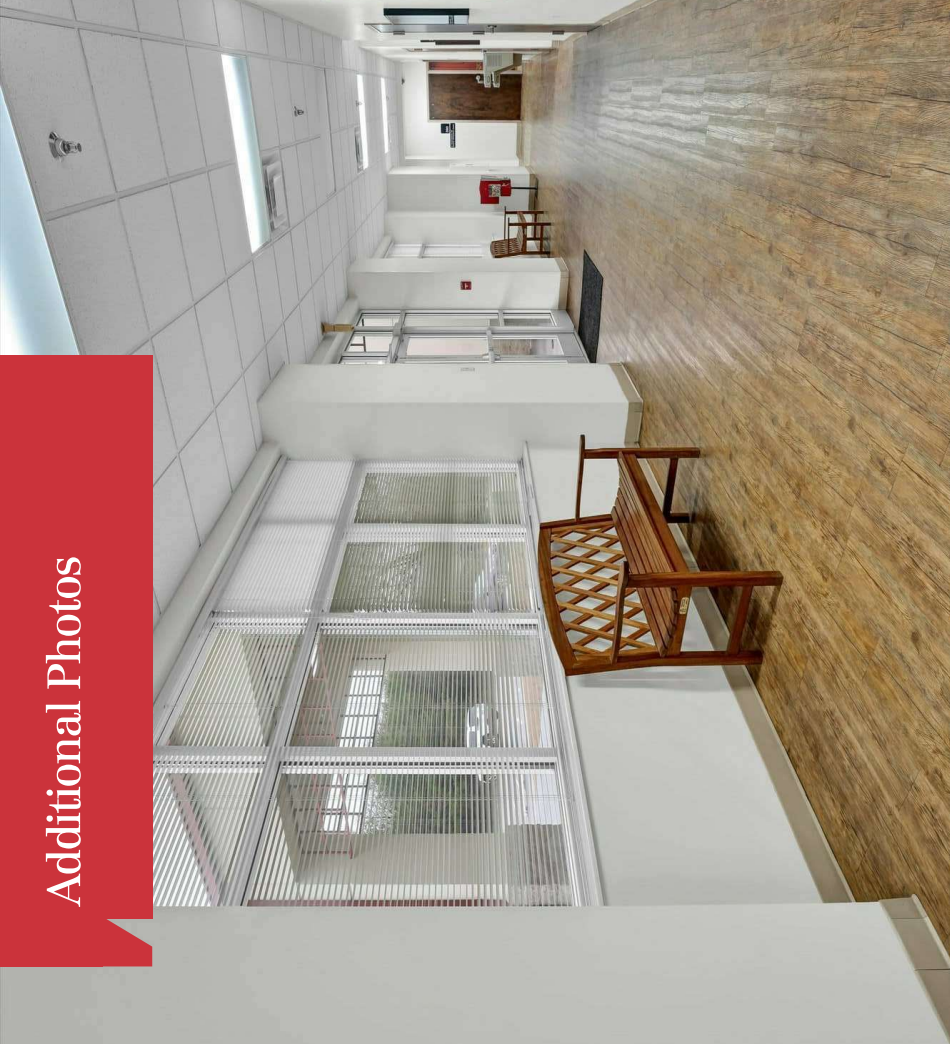
OFFERING SUMMARY

Available SF	1,970 - 8,922 SF
Lease Rate	\$18.50 SF/yr (NNN)
Lot Size	5.21 Acres
Parking	134 Spaces 5.36 per 1,000
Building Size	29,308 SF
Year Built	1997
Traffic Counts	19,263 ADT

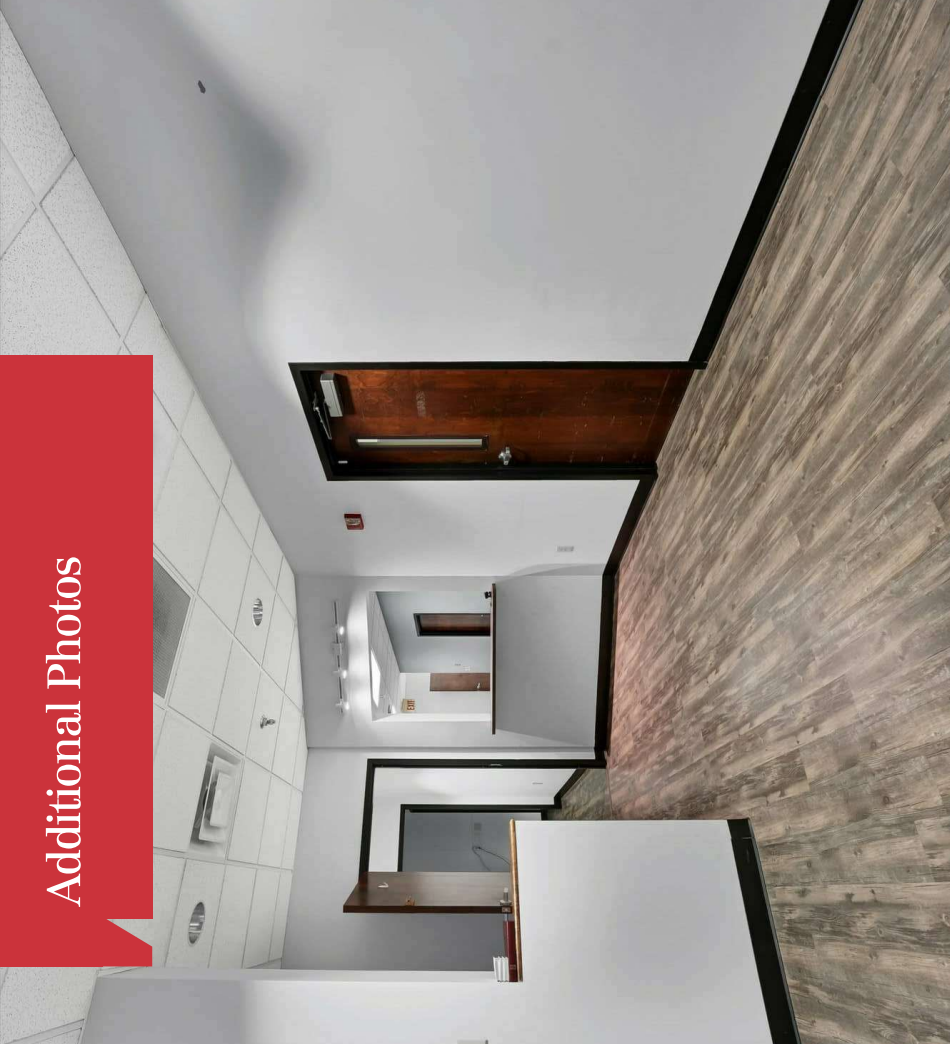
DEMOGRAPHICS

Stats	Population	Avg. HH Income
10 Miles	42,160	\$71,236
Knox Metro	1,172,792	\$77,766

Additional Photos



Additional Photos



Additional Photos

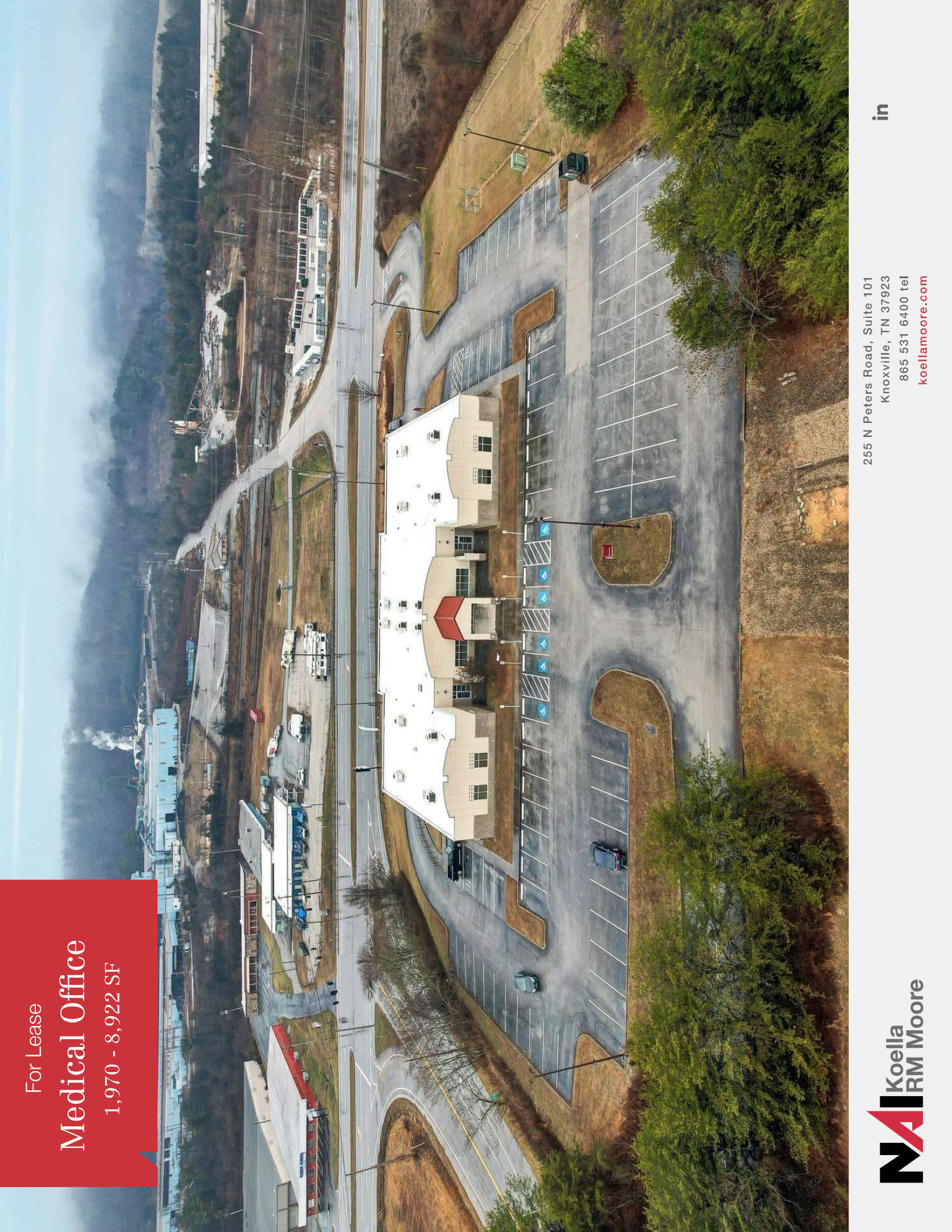


255 N Peters Road, Suite 101
Knoxville, TN 37923
865 531 6400 tel
koellamoore.com

For Lease

Medical Office

1,970 - 8,922 SF



255 N Peters Road, Suite 101
Knoxville, TN 37923
865 531 6400 tel
koellamoore.com

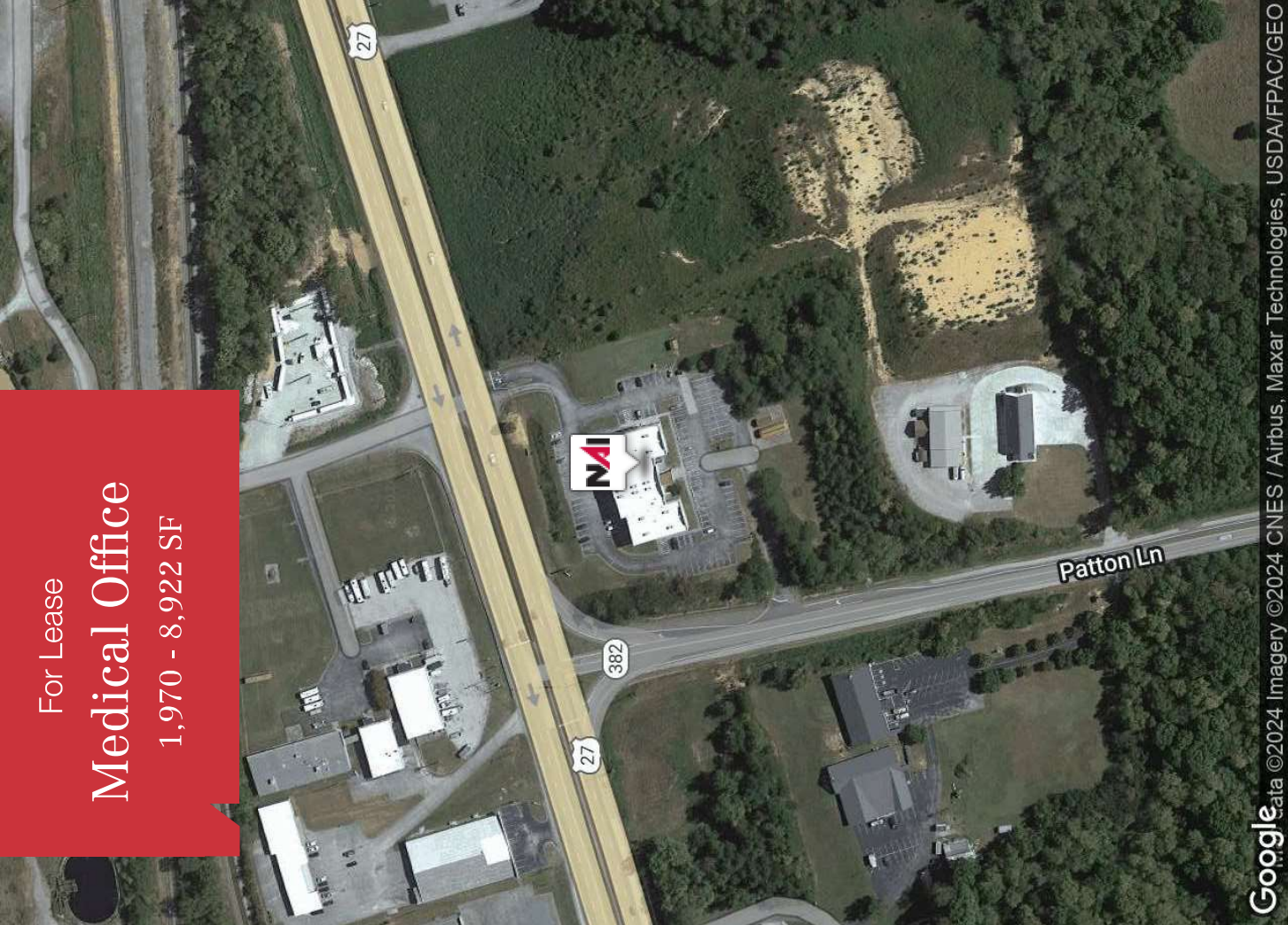
NAI Koella
RM Moore

in

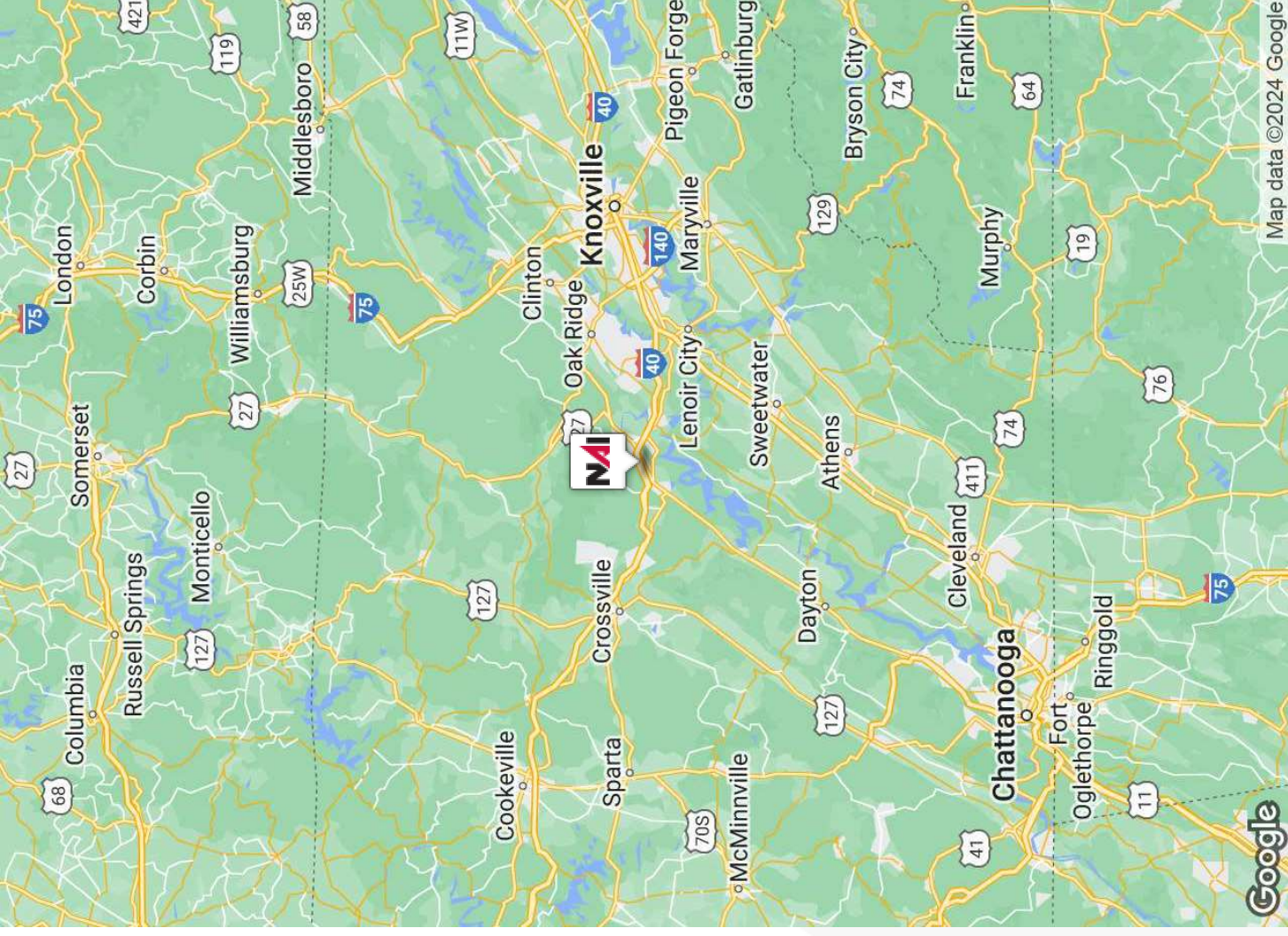
For Lease

Medical Office

1,970 - 8,922 SF



Google Data ©2024 Imagery ©2024 CNES / Airbus, Maxar Technologies, USDA/FPAC/Geo



255 N Peters Road, Suite 101
Knoxville, TN 37923
865 531 6400 tel
koellamoore.com



in

Office Space For Lease

Roane Medical Plaza

1,970 - 8,922 SF | \$18.50 SF NNN



MICHELLE GIBBS

Senior Advisor

Direct: 865.531.6400 **Cell:** 865.228.4264
mgibbs@koellamoore.com



RYAN MCELVEEN, MBA

Advisor

Direct: 865.531.6400 **Cell:** 865.567.0232
rmcelveen@koellamoore.com

CaIDRE #01850467